

CONSTRUCTION PLANS FOR PROPOSED 9TH STREET CORRIDOR SANITARY SEWER IMPROVEMENTS

FOR
THE CITY OF WICHITA,
SEDGWICK COUNTY, KANSAS

Gary Janzen, P.E., City Engineer

Paving Project

City Project No. 468-85147

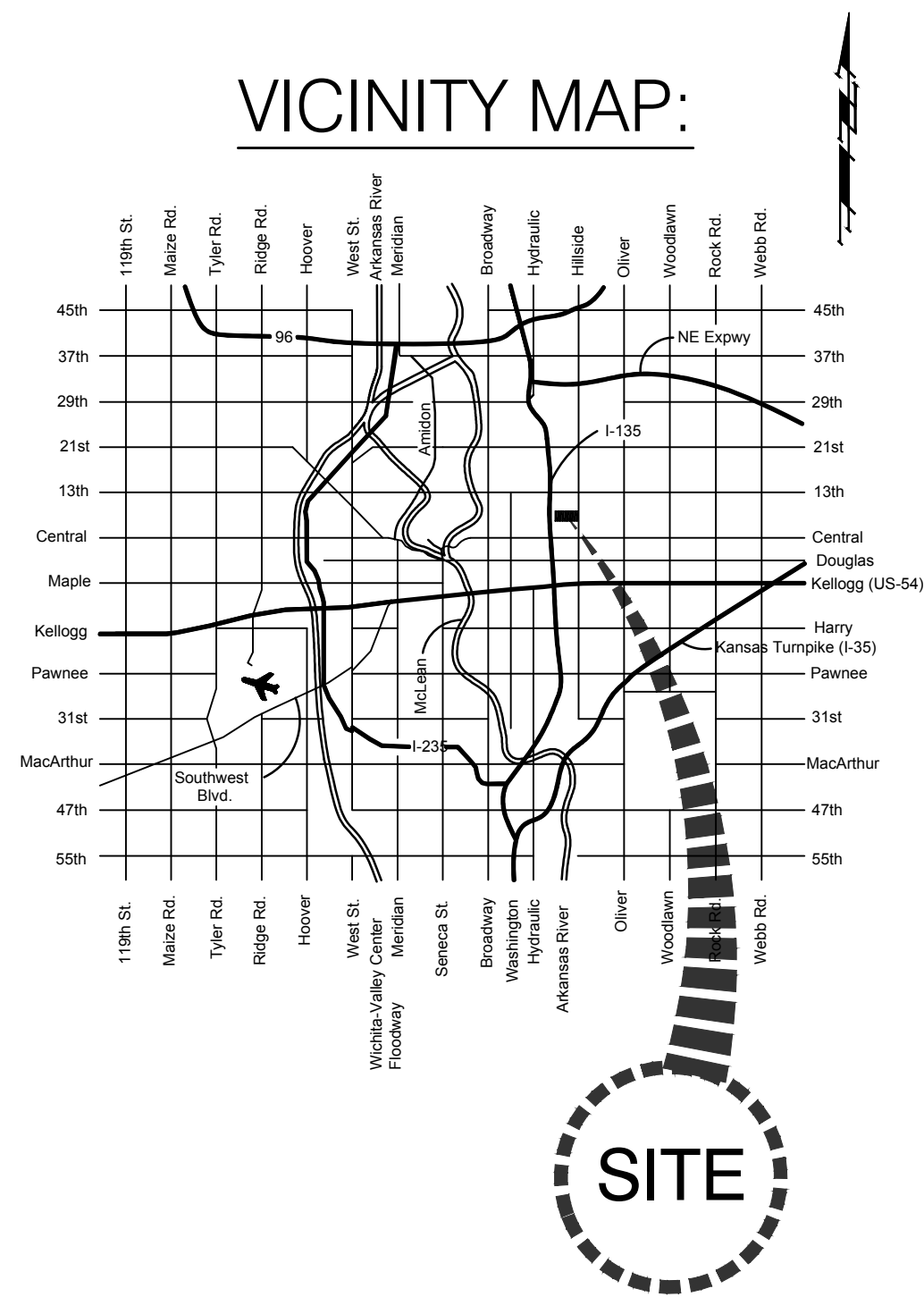
O.C.A. No. 620856

OCTOBER, 2017

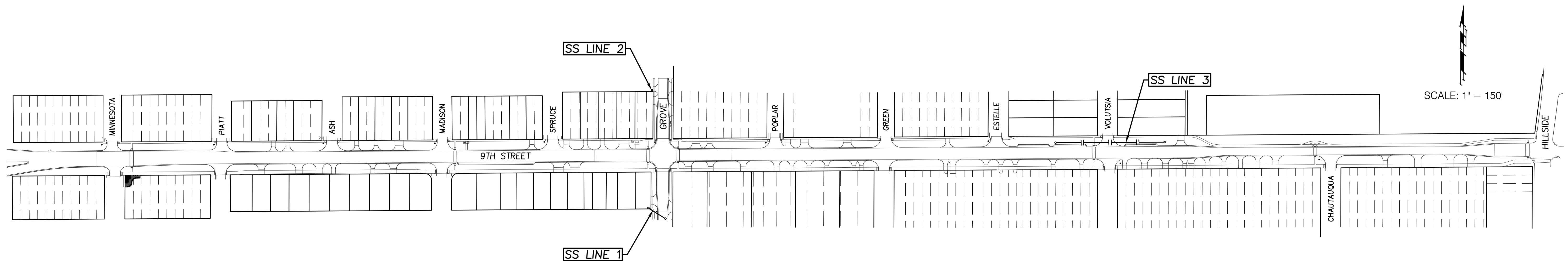
FINAL PLANS

TABLE OF CONTENTS:

	<u>SANITARY SEWER IMPROVEMENTS</u>
B1	Title Sheet
B2-B3	Sanitary Sewer Plan & Profiles
B4-B5	Sanitary Sewer Details



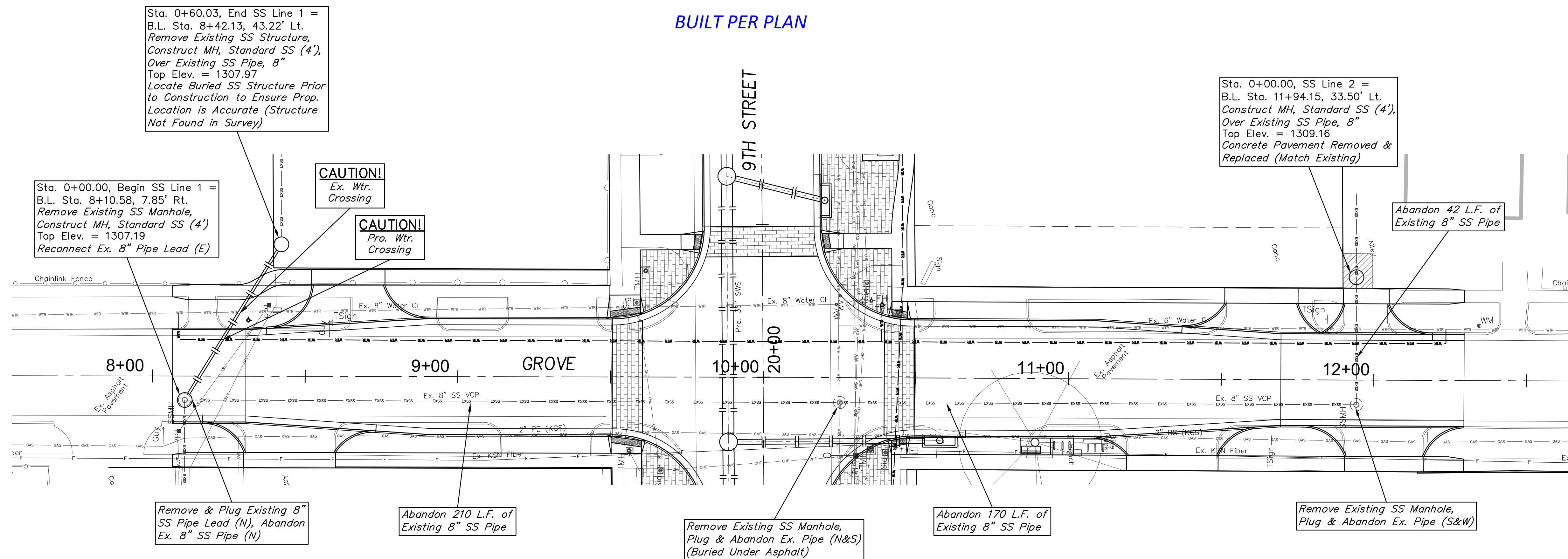
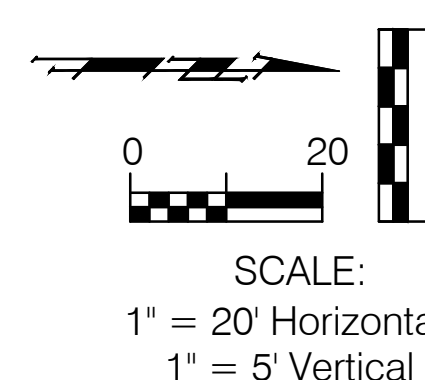
Mies Construction - City of Wichita
G. Baalman - City of Wichita, Field Project Engineer
S. May - City of Wichita, Inspector
As-built
Release Date: 7/12/2018
pdf: 6/17/2019 apr



BENCHMARK:

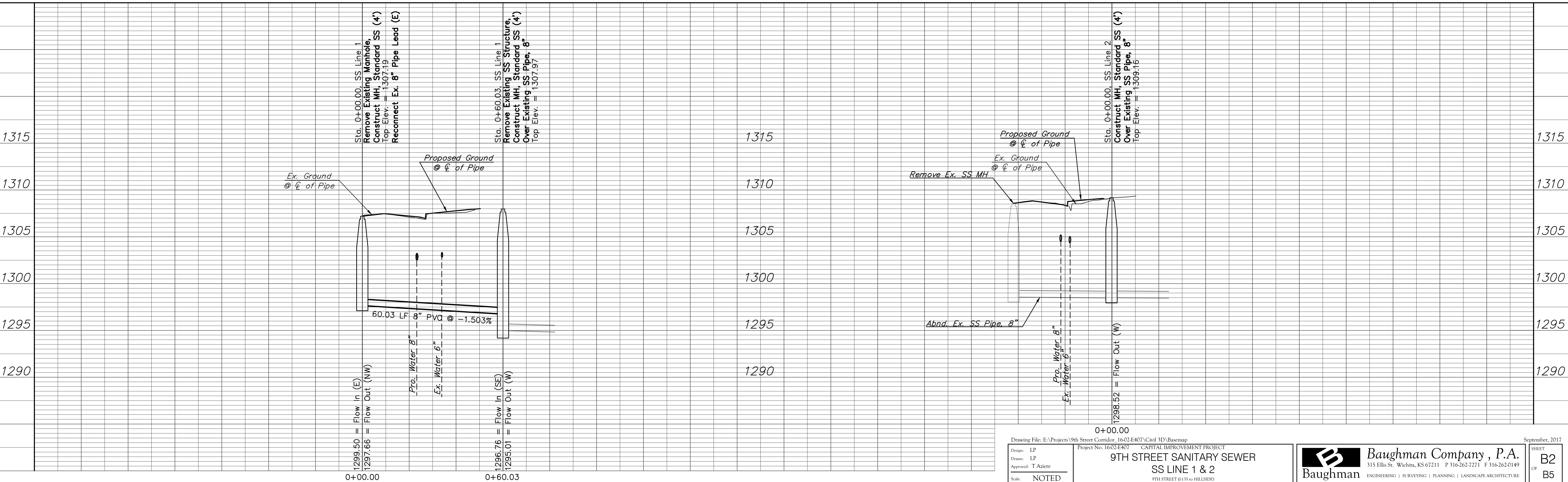
BM #5 - Top of a the NE-most Bolt in the Base of the Sign Located on the Southeast Corner of the 9th & Grove Intersection, 40' East of the Centerline of Spruce and 46' South of the 9th Street Baseline.
Elev. = 1310.67 (NAVD 88)

BUILT PER PLAN



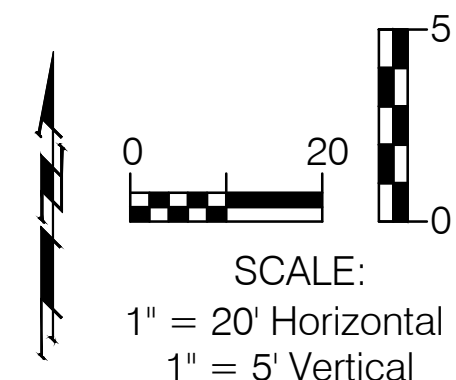
SS LINE 1

SS LINE 2



BENCHMARK:

BM #8 - Chiseled "X" in the Sidewalk, 220' East of the Centerline of Volutsia and 40' North of the 9th Street Baseline.
Elev. = 1320.68 (NAVD 88)

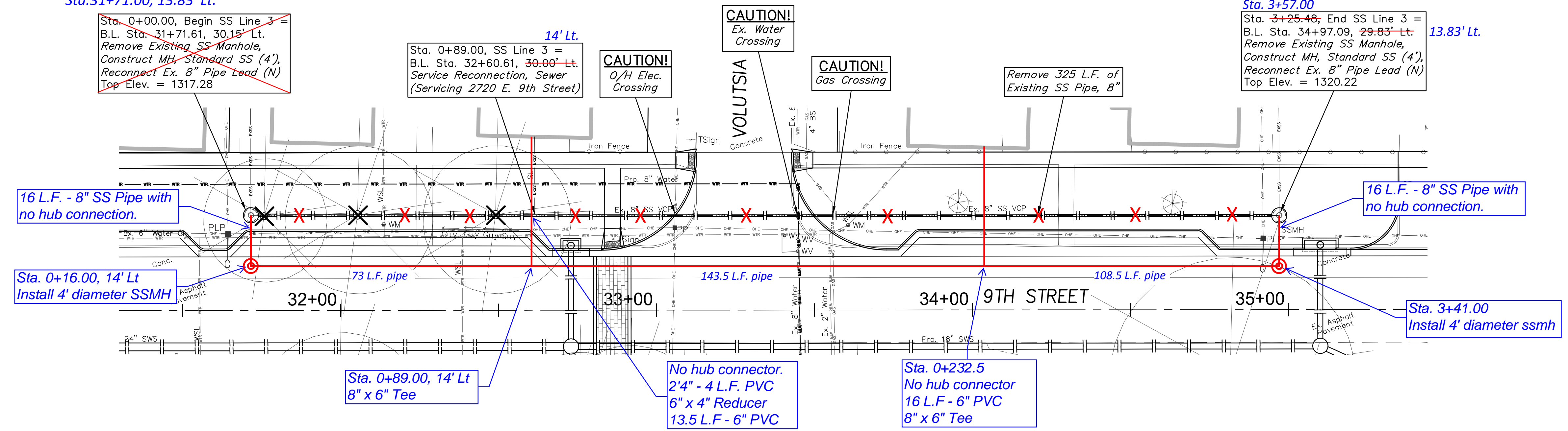


Sta. 0+00.00, Connect to existing 8" sewer line
Begin SS Line 3, remove existing ssmh
Sta.31+71.00, 13.83' Lt.

~~Sta. 0+00.00, Begin SS Line 3 =
B.L. Sta. 31+71.61, 30.15' Lt.
Remove Existing SS Manhole,
Construct MH, Standard SS (4'),
Reconnect Ex. 8" Pipe Lead (N)
Top Elev. = 1317.28~~

Sta. 0+89.00, SS Line 3 =
B.L. Sta. 32+60.61, 30.00' Lt.
Service Reconnection, Sewer
(Servicing 2720 E. 9th Street)

Sta. 3+57.00
Sta. 3+25.48, End SS Line 3 =
B.L. Sta. 34+97.09, 29.83' Lt.
Remove Existing SS Manhole,
Construct MH, Standard SS (4'),
Reconnect Ex. 8" Pipe Lead (N)
Top Elev. = 1320.22



SS LINE 3

