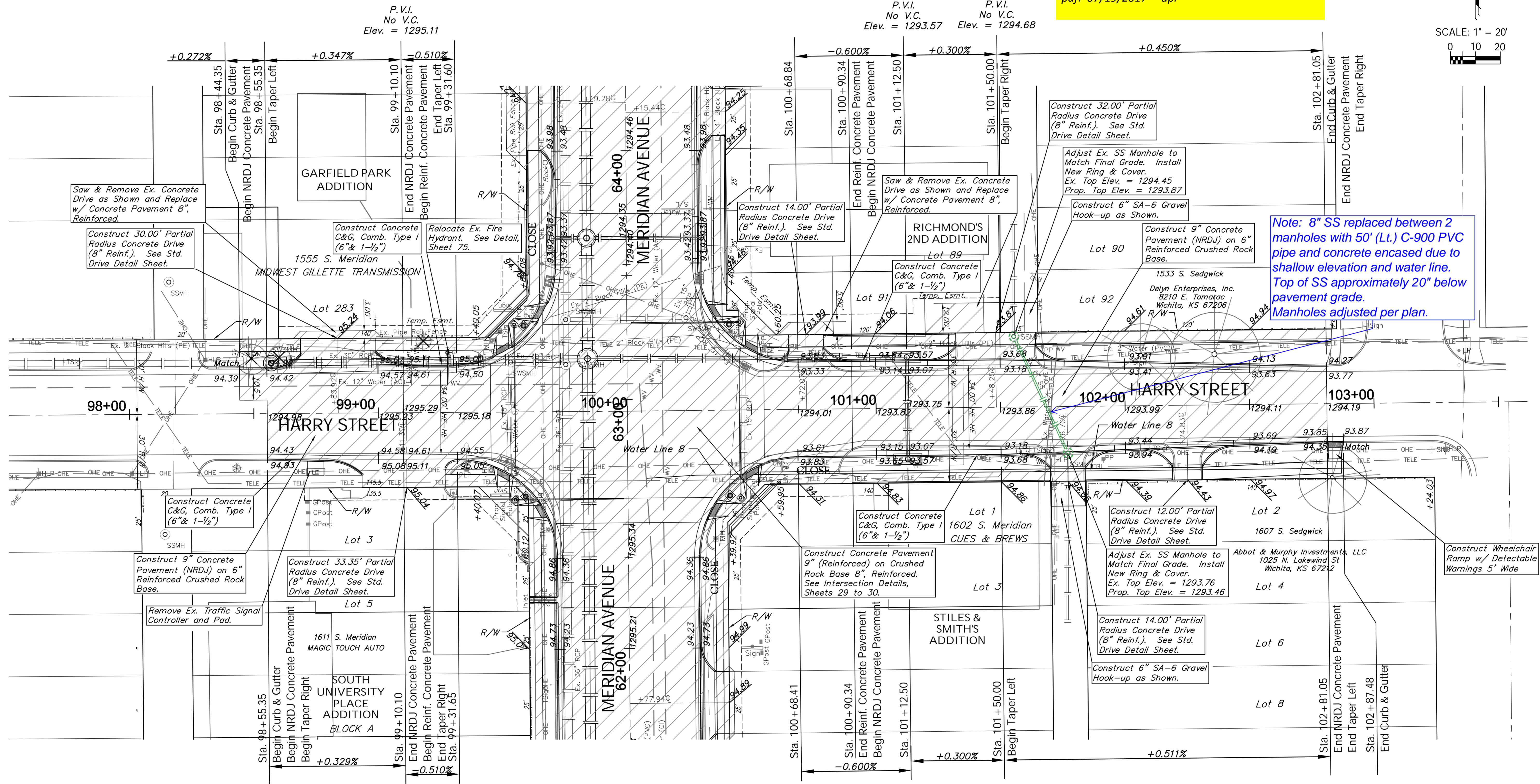


BENCHMARK:
 BM #3 - City of Wichita Benchmark Disc in the Southeast Corner
 of the Intersection of Meridian and Harry, 29.5' South
 and 61' East of the Centerline of Both.
 Elev. = 1294.17 (NAVD 88)

REGION NO.	STATE	PROJECT NO.	FISCAL YEAR	SHEET NO.	TOTAL SHEETS
7	KANSAS	087 N-0593-01	2015	28	153

Wildcat Construction - Contractor
G. Baalman - City of Wichita, Field Project Engineer
T. Anthis - City of Wichita, Inspector
 Release Date: 7/19/2017
 Completion Date:
 pdf: 07/19/2017 apr

SCALE: 1" = 20'
 0 10 20



Note: 8" SS replaced between 2 manholes with 50' (Lt.) C-900 PVC pipe and concrete encased due to shallow elevation and water line. Top of SS approximately 20" below pavement grade. Manholes adjusted per plan.

P.V.I.
 No V.C.
 Elev. = 1295.11

P.V.I.
 No V.C.
 Elev. = 1293.57 Elev. = 1294.68

PROTECTION CURB				
STA. TO STA. (BASELINE)	ROADWAY	SIDE	HEIGHT	LENGTH (ft.)
100+79.1 101+32.3	Harry	Lt.	6"	53.2
100+89.8 101+69.7	Harry	Rt.	6"	79.9
101+64.3 101+85.0	Harry	Lt.	6"	20.7
100+83.7 102+18.8	Harry	Rt.	6"	35.1

Areas of Full Pavement Removal & Replacement are Indicated By:

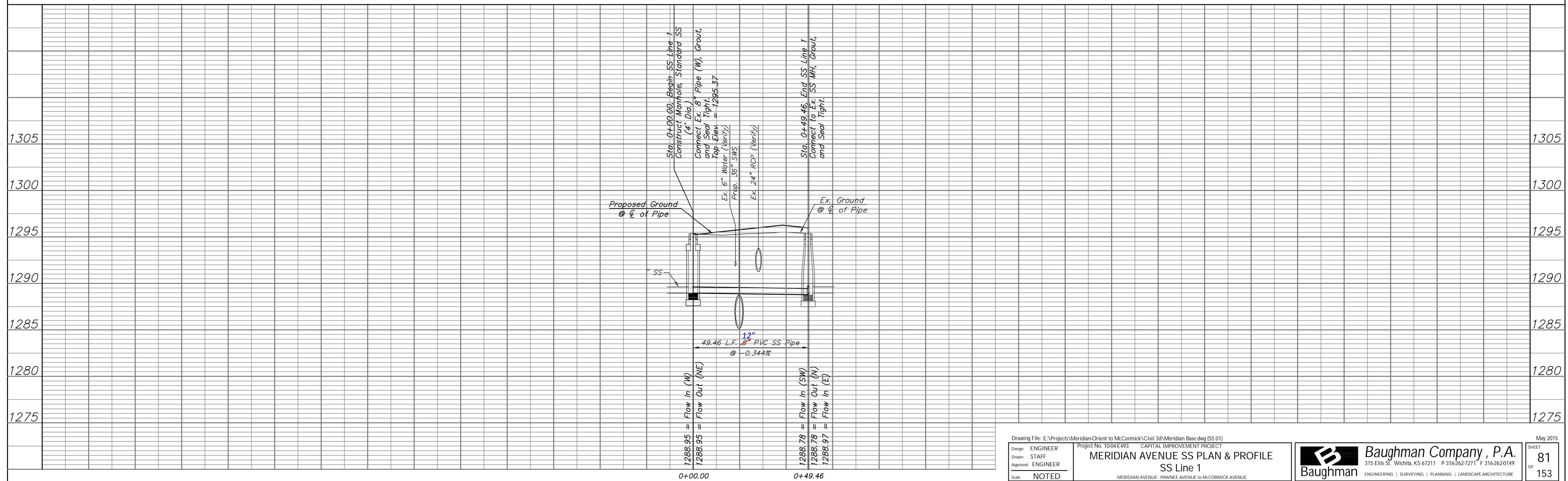
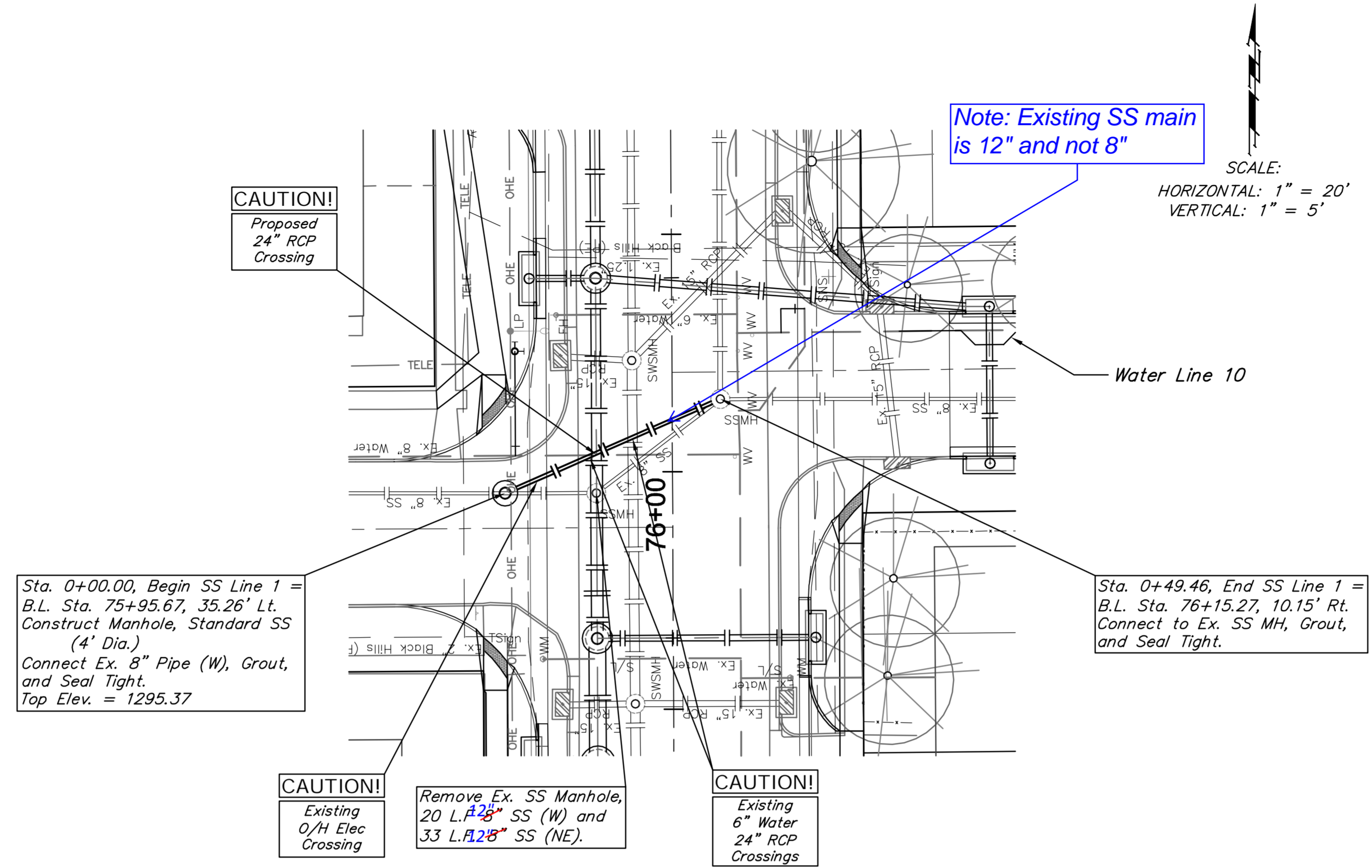
Note:
 Trees/Shrubs to be removed are marked thus:

Drawing File: E:\Projects\Meridian - Orient to McCormick\Civil 3d\Meridian Base.dwg (Pav 15)
 Design: TPV
 Drawn: STAFF
 Approved: TPV
 Scale: NOTED

HARRY STREET PAVING
 Sta. 98+55.35 to Sta. 102+81.05
 MERIDIAN AVENUE - PAVINE AVENUE TO MCCORMICK AVENUE

BENCHMARK:
 BM #6 - Chiseled "□" on the Top of Curb on the South Side of
 Walker Street, 80'± East of Centerline of Meridian.
 Elev. = 1295.44 (NAVD 88)

REGION NO.	STATE	PROJECT NO.	FISCAL YEAR	SHEET NO.	TOTAL SHEETS
7	KANSAS	087 N-0593-01	2015	81	153



Drawing File: E:\Projects\Meridian-Orient to McCormick\Civil\3d\Meridian Base.dwg (SS 01)

Design: ENGINEER
 Drawn: STAFF
 Approved: ENGINEER
 Scale: NOTED

Project No. 1004-E493 CAPITAL IMPROVEMENT PROJECT
MERIDIAN AVENUE SS PLAN & PROFILE
 SS Line 1
 MERIDIAN AVENUE - PAWNEE AVENUE to MCCORMICK AVENUE

Baughman Company, P.A.
 315 Ellis St., Wichita, KS 67211 P 316-262-7271 F 316-262-0149
 ENGINEERING | SURVEYING | PLANNING | LANDSCAPE ARCHITECTURE

May 2015
 SHEET
81
 OF
153