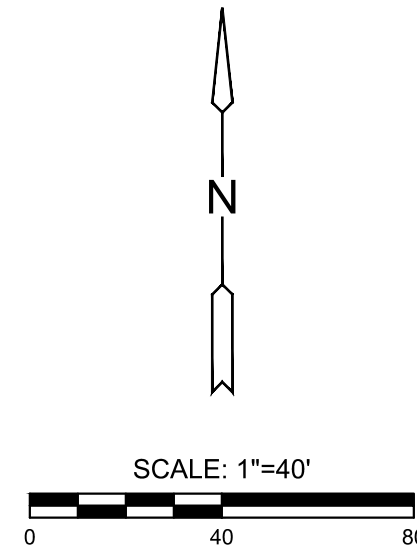


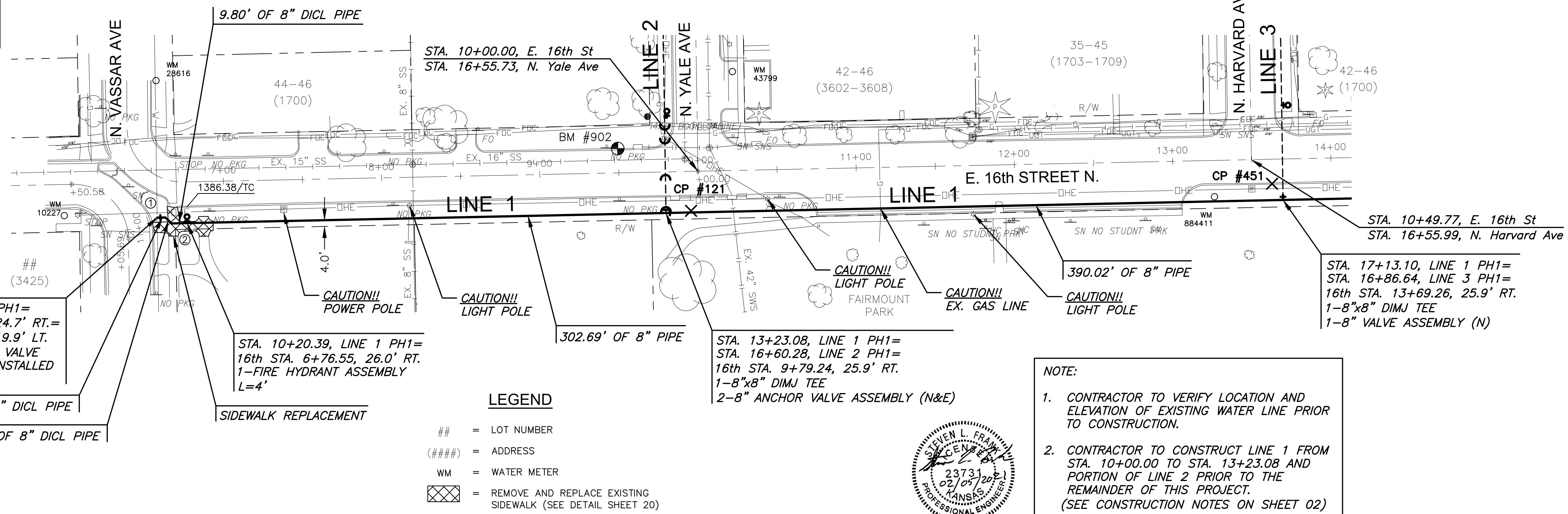
PUNTED: Feb 09, February 05, 2021 @ 07:57AM

BEND CHART			
NO.	4" BEND	STA.	BL. STA. OFFSET, RT.
①	45°	10+05.17	6+67.64 23.4' RT.
②	45°	10+10.59	6+70.23 26.5' RT.

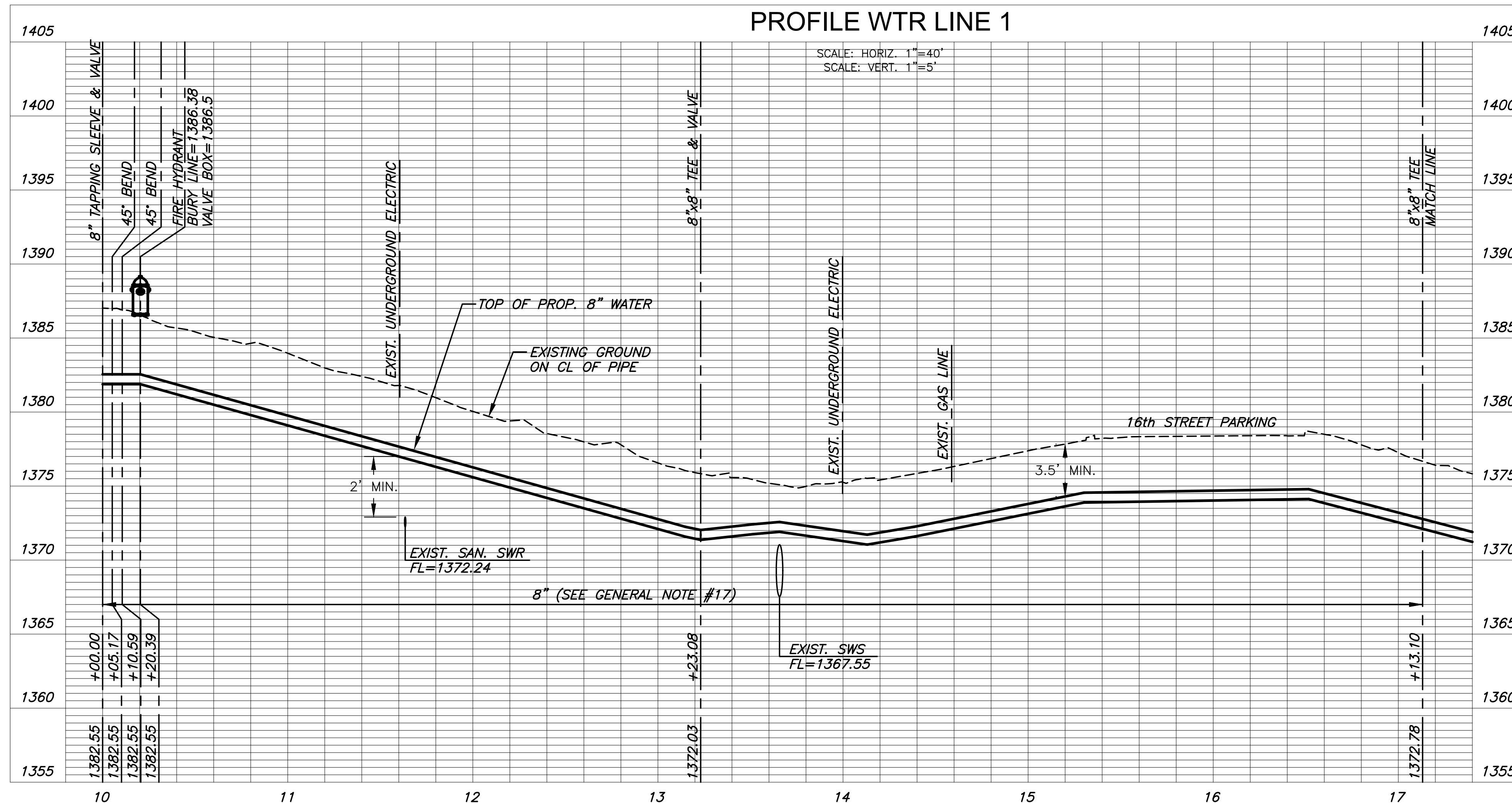


STA. 10+00.00, LINE 1 PH1=
16th ST STA. 6+64.67, 24.7' RT.=
Vassar STA. 10+97.32, 19.9' LT.
1-8" TAPPING SLEEVE & VALVE
TO BE FURNISHED AND INSTALLED
BY C.O.W. WATER DEPT.

5.17' OF 8" DICL PIPE
5.42' OF 8" DICL PIPE



PLAN WTR LINE 1
PROFILE WTR LINE 1



WATER LINE REPLACEMENT PLANS FOR
WATER LINE IMPROVEMENTS
SOUTH OF 17th STREET

©2021
MKEC Engineering
All Rights Reserved
www.mkec.com
These drawings and their contents, including, but not limited to, all concepts, designs, & ideas are the exclusive property of MKEC Engineering (MKEC), and may not be used or reproduced in any way without the express consent of MKEC.

WATER LINE 1

PROJECT NO.	448-2020-027409	
DATE	FEB. 2021	
SCALE	1" = 40'	
DESIGNED	DRAWN	CHECKED
DFL	JWC	SLF

NO.	REVISION	DATE
-----	----------	------

SHEET NO.

J:\PROJECTS\2019\1901010483_COW WATER MAIN SOUTH OF 17TH_19483_1200 CAD\SHOTS\05 CIVIL\WTR\19483-05-3200.DWG