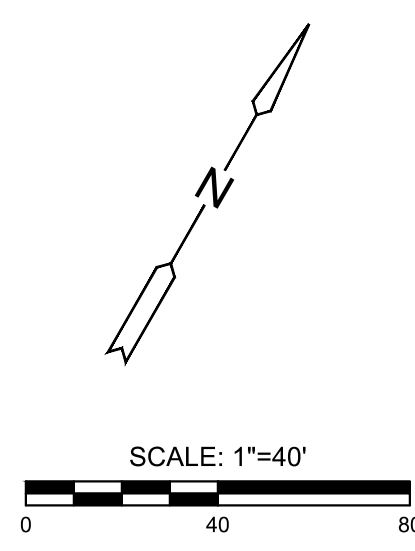


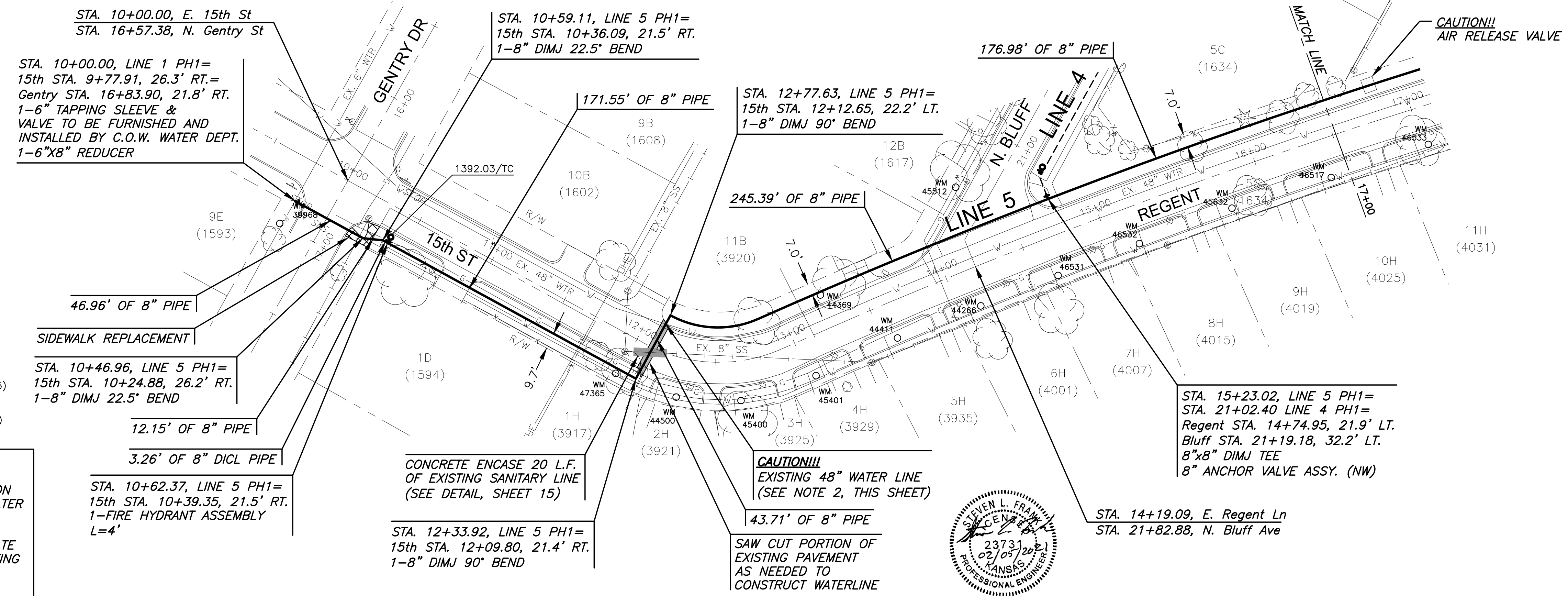
PLOTTED: Friday, February 05, 2021 @ 10:13AM



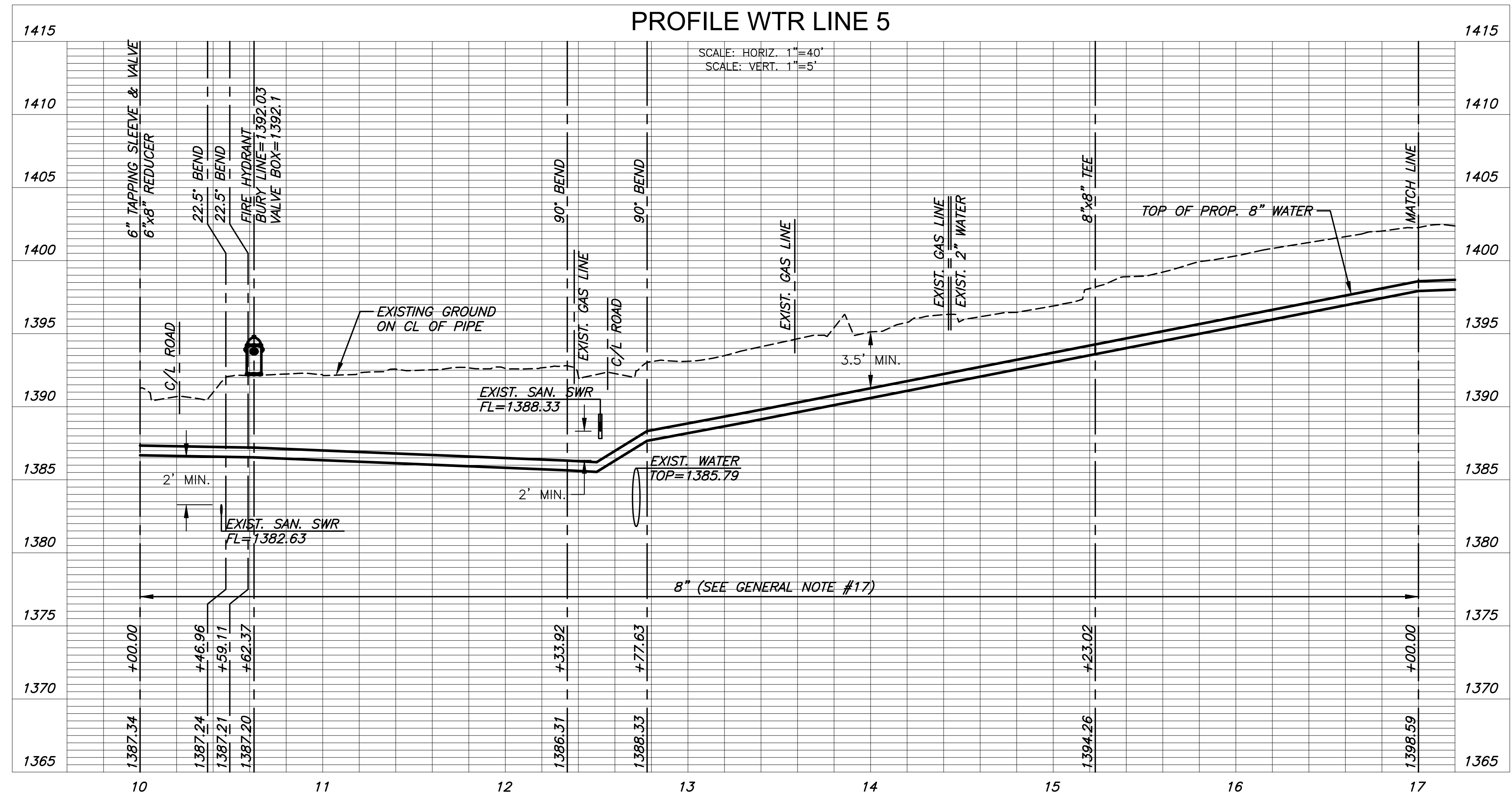
LEGEND

- ## = LOT NUMBER
- (###) = ADDRESS
- WM = WATER METER
- [Hatched Box] = REMOVE AND REPLACE EXISTING PAVEMENT (SEE DETAIL SHEET 05)
- [Cross-hatched Box] = REMOVE AND REPLACE EXISTING SIDEWALK (SEE DETAIL SHEET 20)

- NOTE:**
- CONTRACTOR TO VERIFY LOCATION AND ELEVATION OF EXISTING WATER LINE PRIOR TO CONSTRUCTION.
 - CONTRACTOR TO HYDRO-EXCAVATE AND VERIFY LOCATION OF EXISTING 48" WATER MAIN PRIOR TO DIRECTIONAL DRILLING.



**PLAN WTR LINE 5
PROFILE WTR LINE 5**



**WATER LINE REPLACEMENT PLANS FOR
WATER LINE IMPROVEMENTS
SOUTH OF 17th STREET**

©2021 MKEC Engineering All Rights Reserved
www.mkec.com
These drawings and their contents, including, but not limited to, all concepts, designs, & ideas are the exclusive property of MKEC Engineering (MKEC), and may not be used or reproduced in any way without the express consent of MKEC.

WATER LINE 5

PROJECT NO.	448-2020-027409	
DATE	FEB. 2021	
SCALE	1" = 40'	
DESIGNED	DRAWN	CHECKED
DFL	JWC	SLF

NO.	REVISION	DATE

SHEET NO. 13 OF 30

J:\PROJECTS\2019\10010483_COW WATER MAIN SOUTH OF 17TH_19483_1200 CAD\SHOTS\05 CIVIL\WTR\19483-05-3208.DWG