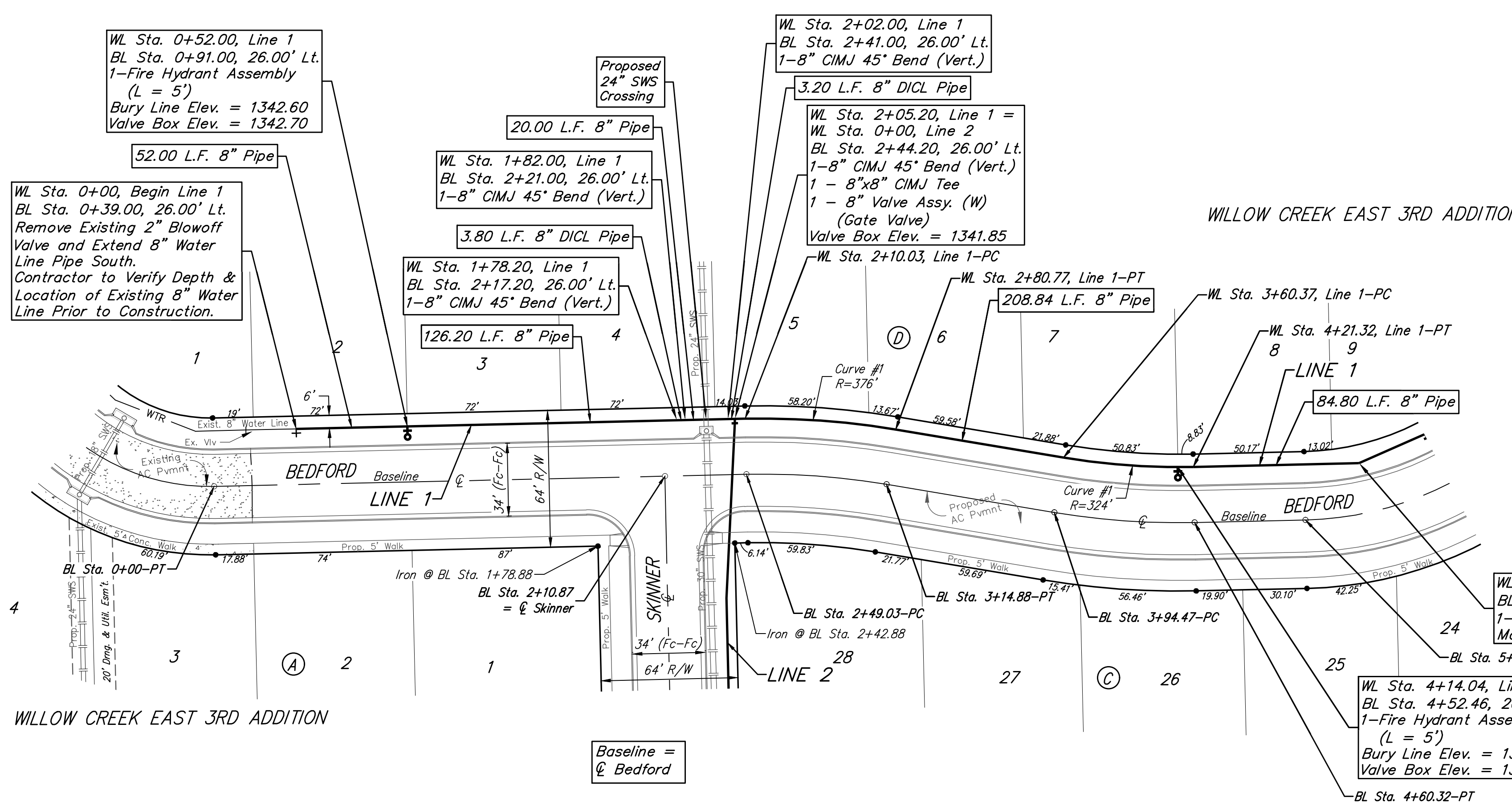


**BENCHMARKS:**  
 Brass benchmark disc in top of curb, east of wheelchair ramp NE cor. of Funston and Lynnrae Elev. = 1343.69 NAVD88  
 Brass benchmark disc in top of curb, north of wheelchair ramp NW cor. of Funston and Herrington Elev. = 1344.71 NAVD88

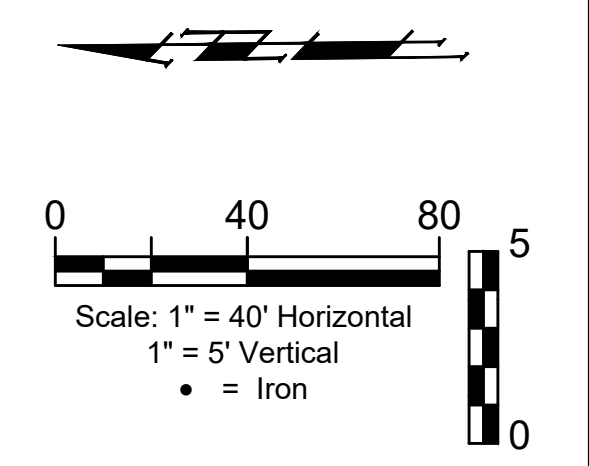


Curve #1  
 Curve Data Based on Centerline of Pipe  
 Rad. = 376' Delta = 10°46'47" Tangent = 35.48'  
 Arc = 70.74' L.C. = 70.64' Def./Ft. = 4.57155 Min.

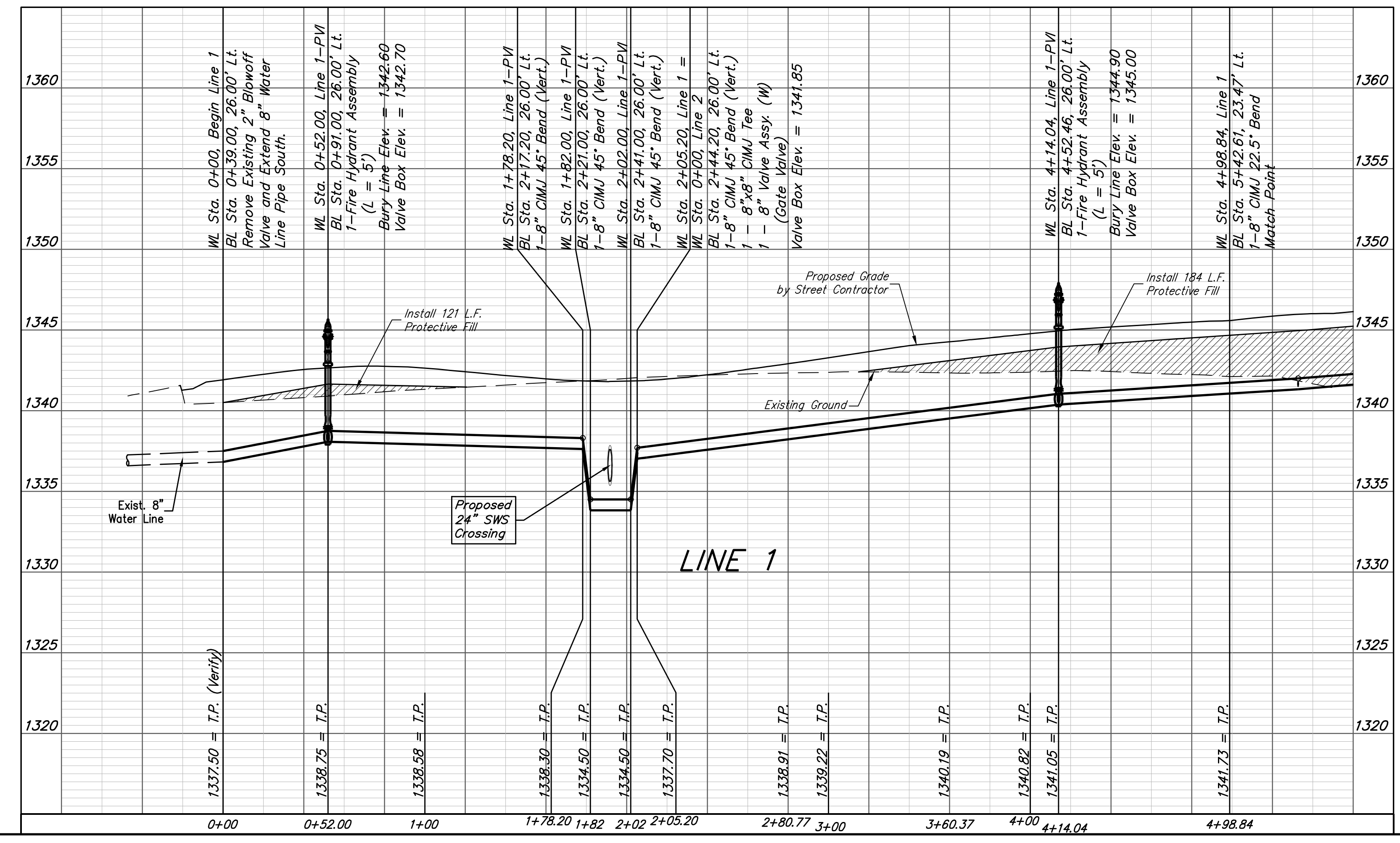
Station	Arc	Chord 8' Left	Defl.	Total Defl.
2+10.03	-	-	0°00'00"	0°00'00"
2+25.00	14.97'	15.29'	1°08'26"	1°08'26"
2+50.00	25.00'	25.53'	1°54'17"	3°02'43"
2+75.00	25.00'	25.53'	1°54'18"	4°57'01"
2+80.77	5.77'	5.89'	0°26'23"	5°23'24"

Curve #2  
 Curve Data Based on Centerline  
 Rad. = 324' Delta = 10°46'47" Tangent = 30.57'  
 Arc = 60.95' L.C. = 60.87' Def./Ft. = 5.30585 Min.

Station	Arc	Chord 8' Left	Defl.	Total Defl.
3+60.37	-	-	0°00'00"	0°00'00"
3+75.00	14.63'	14.27'	1°17'37"	1°17'37"
4+00.00	25.00'	24.38'	2°12'39"	3°30'16"
4+14.04	14.04'	13.69'	1°14'30"	4°44'46"
4+21.32	7.28'	7.10'	0°38'38"	5°23'24"



WILLOW CREEK EAST 3RD ADDITION



**Baughman** Willow Creek East 3rd Addition - Phase II  
**LINE 1**  
 Water Distribution System

Baughman Company, P.A. 315 Ellis St. Wichita, KS 67211 P 316-262-7271 F 316-262-0149  
 ENGINEERING | SURVEYING | PLANNING | LANDSCAPE ARCHITECTURE

PROJECT NUMBER: 448-90949  
 DESIGN: DMV  
 DRAWN: JAK  
 APPROVED: [Signature]  
 DATE: 2/08/2021

REVISIONS:

SCALE: Noted  
 SHEET: 4 OF 16

E:\Projects\Willow Creek East 3rd Addition (17-04-283)\Engineering\Phase 2\WTR\_20-10-E741\WTR PLANS.dwg