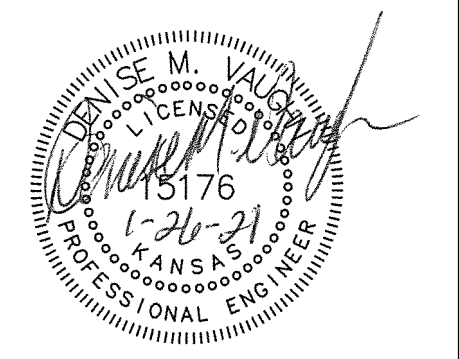
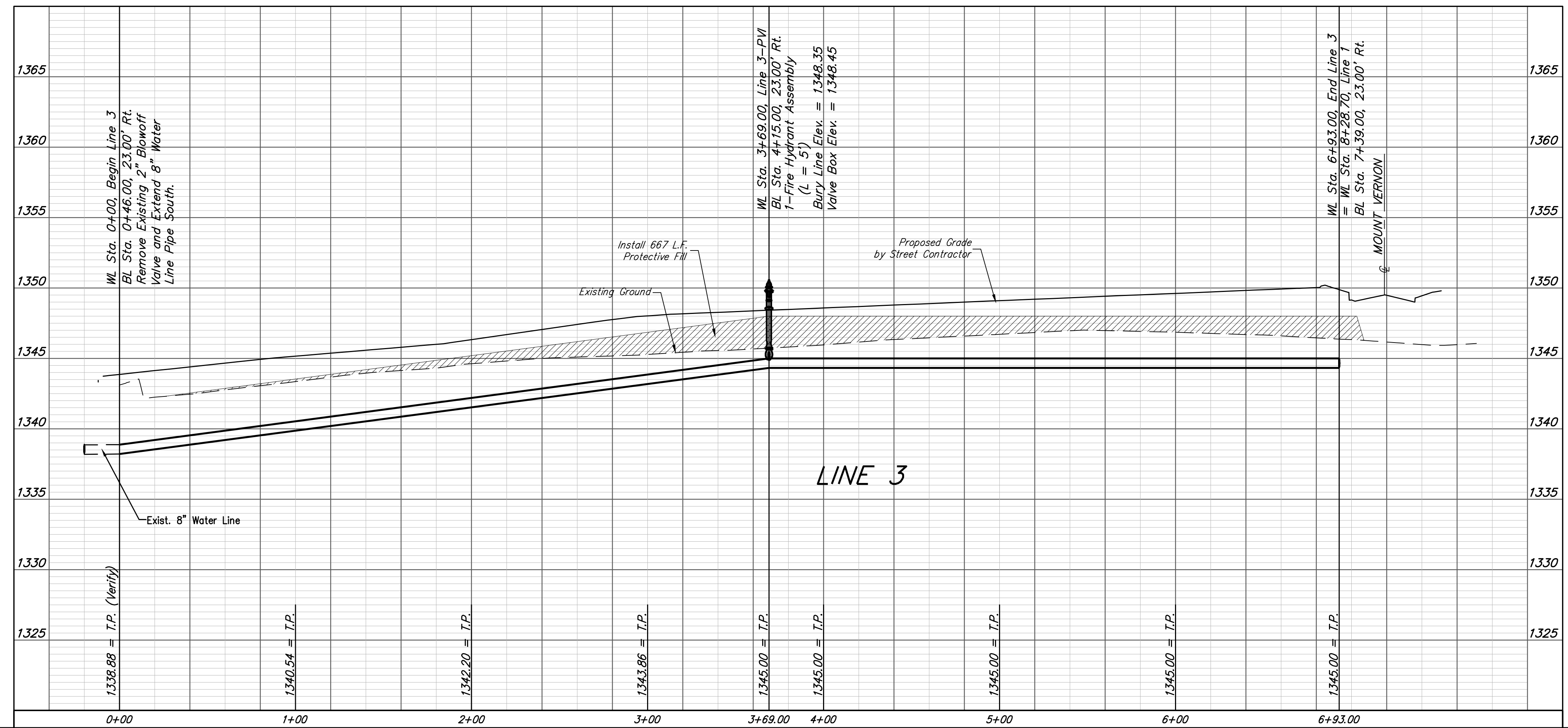
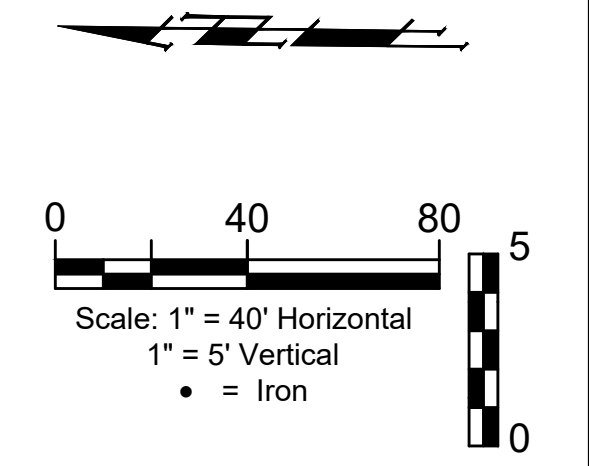
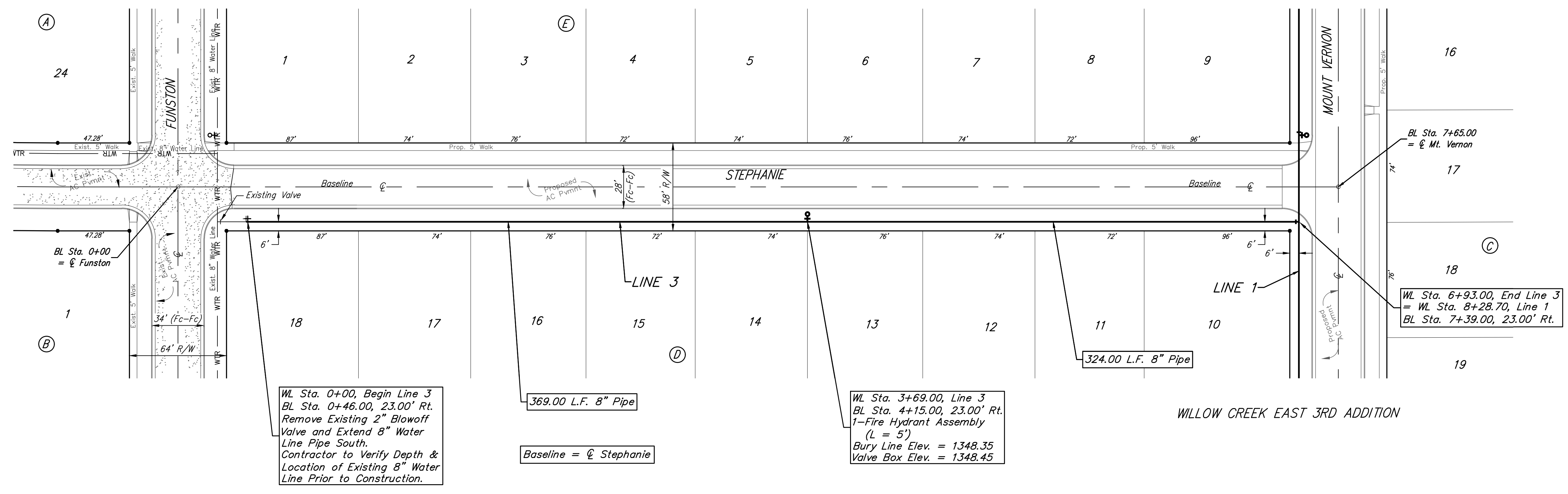


BENCHMARKS:
 Brass benchmark disc in top of curb, east of wheelchair ramp NE cor. of Funston and Lynnrae Elev. = 1343.69 NAVD88
 Brass benchmark disc in top of curb, north of wheelchair ramp NW cor. of Funston and Herrington Elev. = 1344.71 NAVD88

WILLOW CREEK EAST 3RD ADDITION



Baughman Willow Creek East 3rd Addition - Phase II
LINE 3
 Water Distribution System

Baughman Company, P.A. 315 Ellis St. Wichita, KS 67211 P 316-262-7271 F 316-262-0149
 ENGINEERING | SURVEYING | PLANNING | LANDSCAPE ARCHITECTURE

PROJECT NUMBER 448-90949	DESIGN DMV	DRAWN JAK
REVISIONS:	APPROVED	DATE 2/08/2021
	SCALE Noted	
	SHEET	7 OF 16

E:\Projects\Willow Creek East 3rd Addition (17-04-P28)\Engineering\Phase 2\WTR 20-10-E741\WTR PLANS.dwg