

PLOTTED: Wednesday, February 10, 2021 @ 03:01PM
 J:\PROJECTS\2019\1901010483_COW_ANNA_PAVING\001_190483_CAD\SHOTS\05_CIVIL\GENERAL\190483-05-5001.DWG

PLANS FOR ANNA STREET PAVING IMPROVEMENTS

CITY OF WICHITA
SEDGWICK COUNTY, KANSAS

GARY L. JANZEN, P.E. - CITY ENGINEER

CITY OF WICHITA PAVING PROJECT NO. 472-2020-085651

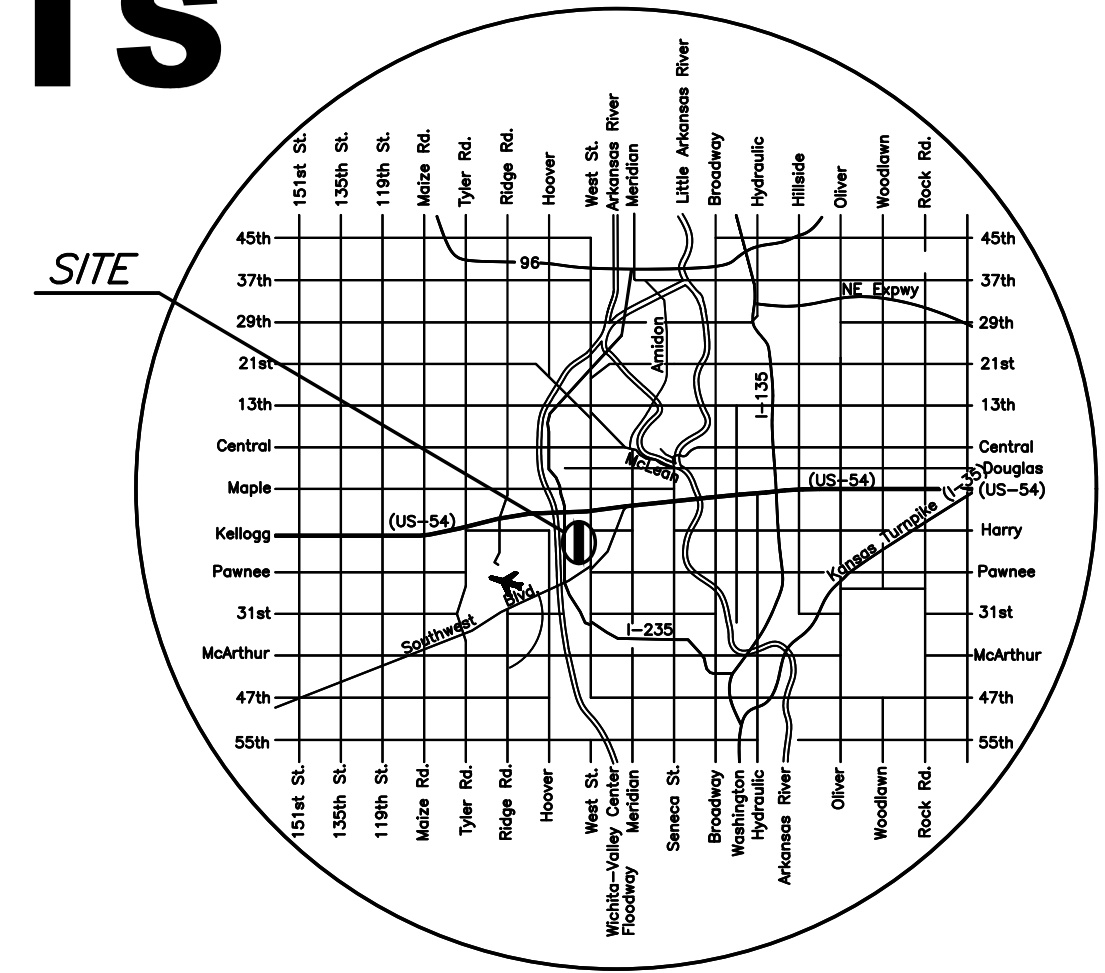
ORG CODE 47466720

MUNIS NUMBER E0089

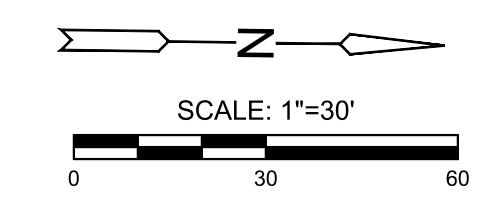
CITY OF WICHITA WATER PROJECT NO.

INDEX TO DRAWINGS

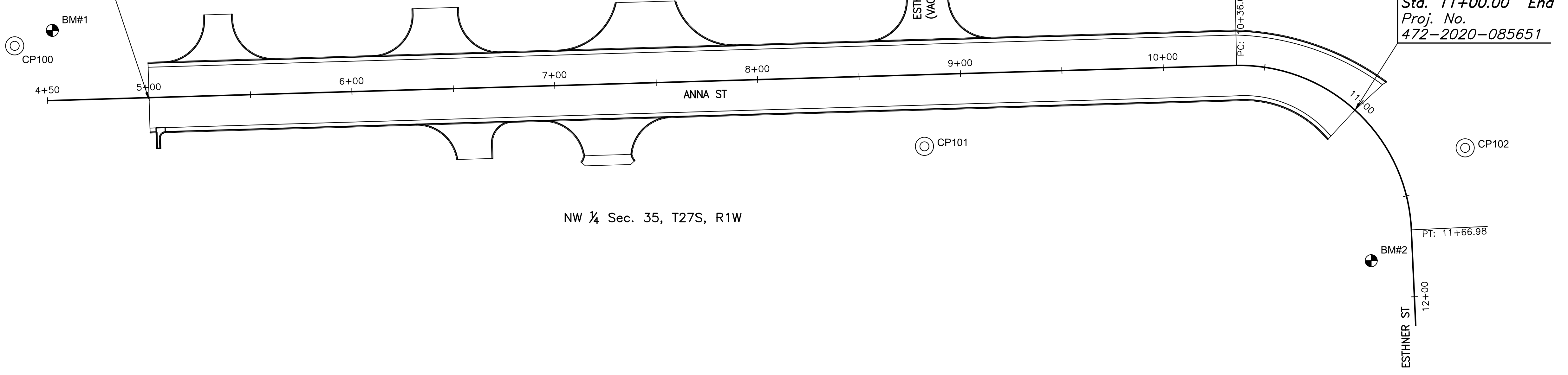
SHEET NO.	DESCRIPTION
1	TITLE SHEET
2	GENERAL NOTES
3	TYPICAL SECTIONS
4-5	PAVING PLANS
6-7	STORM SEWER PLAN & PROFILES
8	BUBBLE MAP
9-10	PAVING DETAILS
11-15	STORM SEWER DETAILS
16	MISCELLANEOUS DETAILS
17	WATER PLAN & PROFILES
18-19	WATER DETAILS
20-25	EROSION CONTROL & ROADSIDE IMPROVEMENTS PLAN AND DETAILS
26-27	SIGNING PLAN AND DETAILS
28	CONSTRUCTION SEQUENCE SUMMARY
29-33	TRAFFIC CONTROL PLAN AND DETAILS
34	DRAINAGE MAP
35-38	CROSS SECTIONS



LOCATION MAP



Sta. 5+00.00 Start
Proj. No.
472-2020-085651



Sta. 11+00.00 End
Proj. No.
472-2020-085651

BENCHMARKS

BM #1
1676194.75 E: 1631396.67 EL: 1300.99 (88)
Description of Benchmark: Cotton Gin in West face of Light Pole at the SW corner of North entrance (private) to the trailer park and Anna.

BM #2
1676842.84 E: 1631519.91 EL: 1299.11 (88)
Description of Benchmark: Square Cut front center of curb inlet on the S side of Esther and the E return of a curve to the S onto Anna

CONTROL POINTS

CP100
1676176.032 E: 1631404.005 EL: 1300.02
Description of control point: 5/8 bar Alum Cap

CP101
1676623.568 E: 1631460.239 EL: 1299.39
Description of control point: 5/8 Bar Red Control Cap

CP102
1676889.965 E: 1631464.946 EL: 1299.54
Description of control point: 5/8 Bar Red Control Cap

The Horizontal Datum is based on the Kansas Coordinate System of 1983(2011), South Zone. Coordinates shown have been modified to the ground using a combined adjustment factor of 1.0001200144. State Plane coordinates can be calculated by multiplying the shown values by 0.99988.

All elevations shown are based on the NAVD 88 vertical datum.

UTILITIES:
THE UNDERGROUND UTILITIES SHOWN HEREON WERE MARKED IN THE FIELD BY THE UTILITY OWNERS IN RESPONSE TO KANSAS ONE CALL TICKET NUMBER: 20269356, 20269363, & 20269378. THE SURVEYOR MAKES NO GUARANTEE THAT THE UNDERGROUND UTILITIES SHOWN COMPRISE ALL SUCH UTILITIES IN THE AREA, EITHER IN SERVICE OR ABANDONED. THE SURVEYOR FURTHER DOES NOT WARRANT THAT THE UNDERGROUND UTILITIES SHOWN ARE IN THE EXACT LOCATION INDICATED ALTHOUGH HE DOES CERTIFY THAT THEY ARE LOCATED AS ACCURATELY AS POSSIBLE FROM INFORMATION AVAILABLE. THE SURVEYOR HAS NOT PHYSICALLY LOCATED THE UNDERGROUND UTILITIES.



PLANS FOR
ANNA STREET PAVING IMPROVEMENTS
 WICHITA, KS

©2021
MKEC Engineering
All Rights Reserved
www.mkec.com
These drawings and their contents, including, but not limited to, all concepts, designs, & ideas are the exclusive property of MKEC Engineering (MKEC), and may not be used or reproduced in any way without the express consent of MKEC.

TITLE SHEET

PROJECT NO.	1901010483	
DATE	FEB. 2021	
SCALE	1"=30'	
DESIGNED	DRAWN	CHECKED
JRA	RAM	JRA
NO.	REVISION	DATE

SHEET NO.
1 OF 38