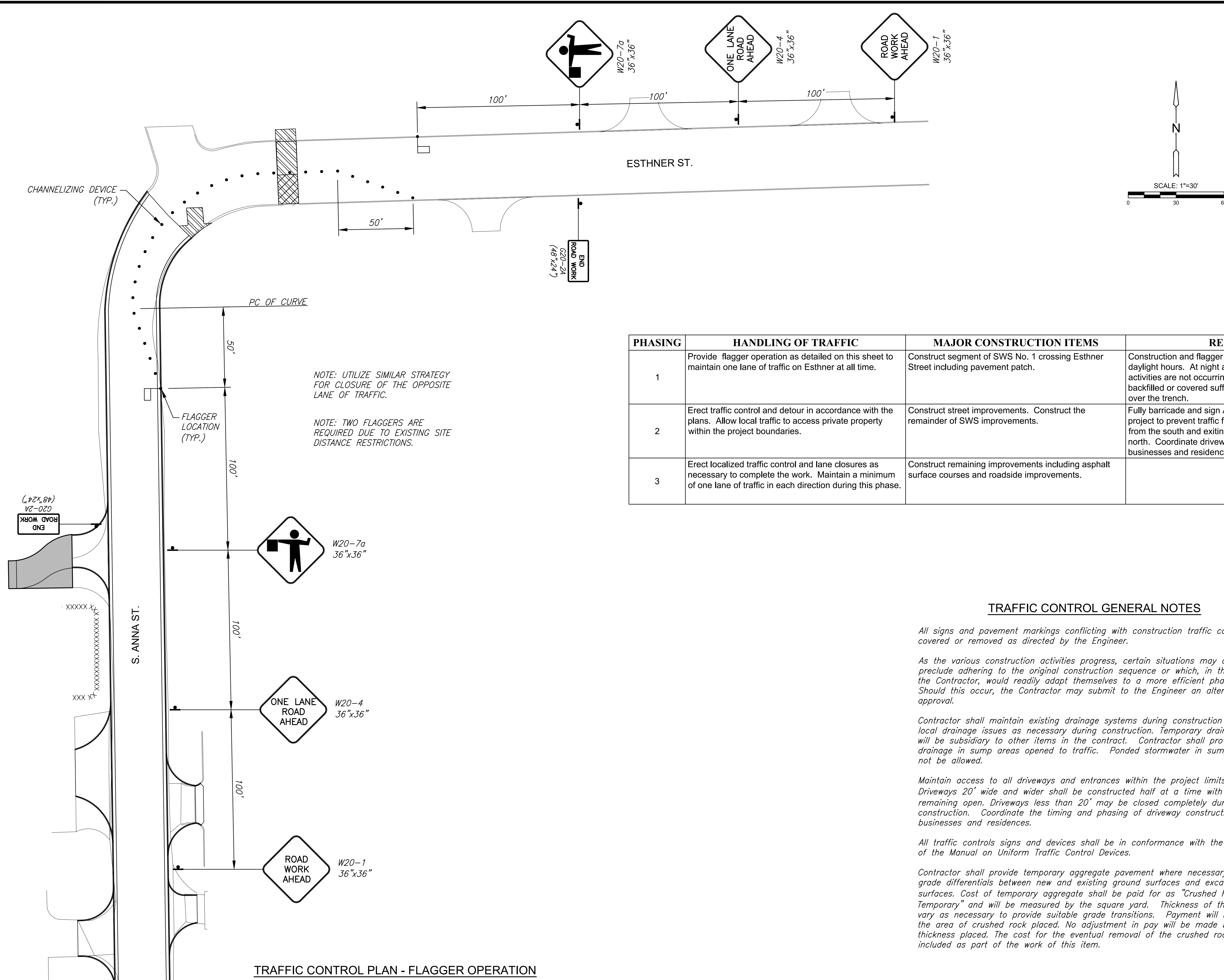


PLOTTED: Wednesday, February 10, 2021 @ 03:09PM

J:\PROJECTS\2019\191010483_COW_ANNA_PAVING\001_190483_CAD\SHOTS\05_CIVIL\TRAFFIC\190483-05-5700.DWG



NOTE: UTILIZE SIMILAR STRATEGY FOR CLOSURE OF THE OPPOSITE LANE OF TRAFFIC.

NOTE: TWO FLAGGERS ARE REQUIRED DUE TO EXISTING SITE DISTANCE RESTRICTIONS.

PHASING	HANDLING OF TRAFFIC	MAJOR CONSTRUCTION ITEMS	REMARKS
1	Provide flagger operation as detailed on this sheet to maintain one lane of traffic on Esthner at all time.	Construct segment of SWS No. 1 crossing Esthner Street including pavement patch.	Construction and flagger operations shall be limited to daylight hours. At night and when construction activities are not occurring, open trenches shall be backfilled or covered sufficiently to allow traffic to pass over the trench.
2	Erect traffic control and detour in accordance with the plans. Allow local traffic to access private property within the project boundaries.	Construct street improvements. Construct the remainder of SWS improvements.	Fully barricade and sign Anna at the south end of the project to prevent traffic from entering the project site from the south and exiting the project site from the north. Coordinate driveway construction with businesses and residences.
3	Erect localized traffic control and lane closures as necessary to complete the work. Maintain a minimum of one lane of traffic in each direction during this phase.	Construct remaining improvements including asphalt surface courses and roadside improvements.	

TRAFFIC CONTROL GENERAL NOTES

All signs and pavement markings conflicting with construction traffic control shall be covered or removed as directed by the Engineer.

As the various construction activities progress, certain situations may arise that will preclude adhering to the original construction sequence or which, in the opinion of the Contractor, would readily adapt themselves to a more efficient phasing operation. Should this occur, the Contractor may submit to the Engineer an alternative plan for approval.

Contractor shall maintain existing drainage systems during construction and address local drainage issues as necessary during construction. Temporary drainage measures will be subsidiary to other items in the contract. Contractor shall provide for drainage in sump areas opened to traffic. Pondered stormwater in sump areas will not be allowed.

Maintain access to all driveways and entrances within the project limits at all times. Driveways 20' wide and wider shall be constructed half at a time with the other half remaining open. Driveways less than 20' may be closed completely during construction. Coordinate the timing and phasing of driveway construction with businesses and residences.

All traffic controls signs and devices shall be in conformance with the latest edition of the Manual on Uniform Traffic Control Devices.

Contractor shall provide temporary aggregate pavement where necessary to bridge grade differentials between new and existing ground surfaces and excavated subgrade surfaces. Cost of temporary aggregate shall be paid for as "Crushed Rock Surface, Temporary" and will be measured by the square yard. Thickness of the material will vary as necessary to provide suitable grade transitions. Payment will be based on the area of crushed rock placed. No adjustment in pay will be made based on the thickness placed. The cost for the eventual removal of the crushed rock material is included as part of the work of this item.

TRAFFIC CONTROL PLAN - FLAGGER OPERATION



PLANS FOR ANNA STREET PAVING IMPROVEMENTS WICHITA, KS

©2021 MKEC Engineering All Rights Reserved www.mkec.com
 These drawings and their contents, including, but not limited to, all concepts, designs, & ideas are the exclusive property of MKEC Engineering (MKEC), and may not be used or reproduced in any way without the express consent of MKEC.

CONSTRUCTION SEQUENCE SUMMARY

PROJECT NO.	1901010483	
DATE	FEB. 2021	
SCALE	1"=30'	
DESIGNED	DRAWN	CHECKED
JRA	RAM	JRA

NO.	REVISION	DATE

SHEET NO. 28 OF 38