

PLOTTED: Wednesday, February 10, 2021 @ 03:03PM

J:\PROJECTS\2019\19010483_COW_ANNA_PAVING\001_190483_CAD\SHOTS\05_CIVIL\SWS\190483-05-2500.DWG

STA. 10+00.0, SWS LINE 1 =
BL. STA. 11+81.13, 24.2' RT.
EXIST. CURB INLET
INLET TOP=1299.36

STA. 10+45.6, SWS LINE 1 =
BL. STA. 11+81.79, 21.4' RT.
INSTALL TYPE 1 CURB INLET
L=5', W=3', TOP=1299.15
SEE SH. NO. 11

STA. 11+34.5, SWS LINE 1 =
BL. STA. 10+90.74, 4.6' RT.
INSTALL 5' DIA. SHALLOW MANHOLE
MH TOP=1298.73
SEE SH. NO. 14

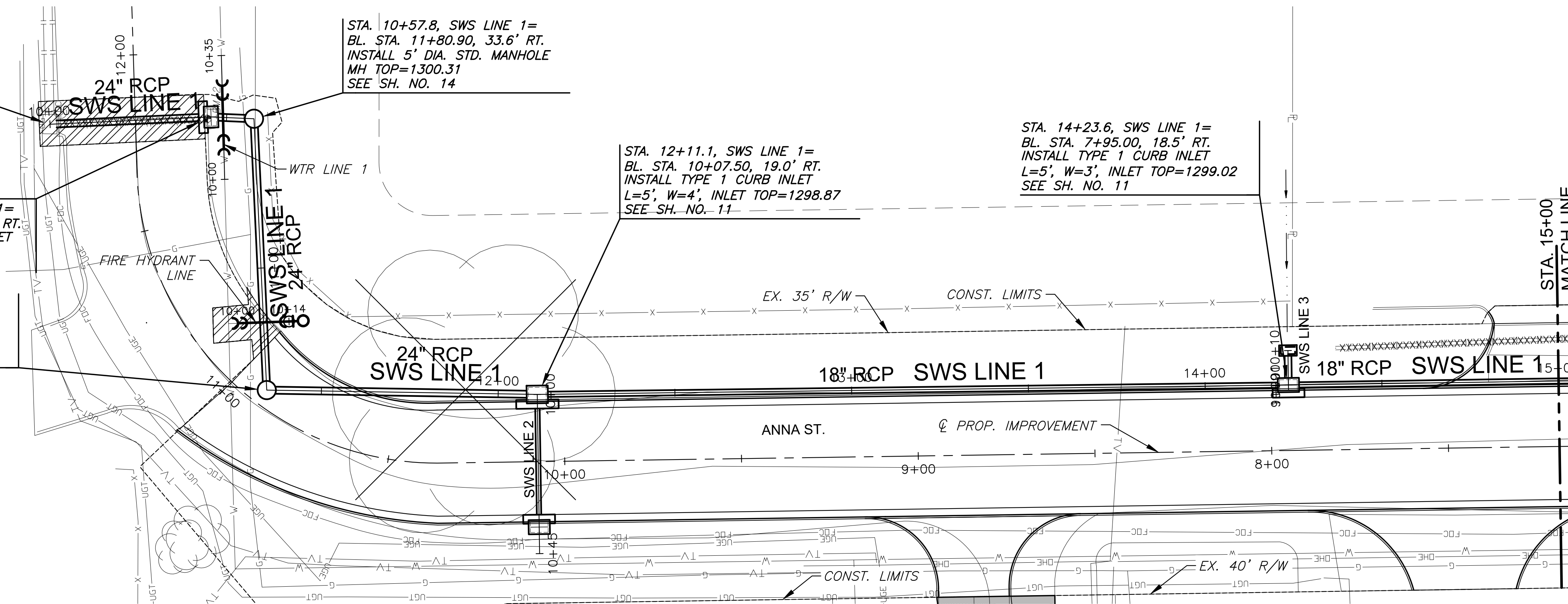
STA. 10+57.8, SWS LINE 1 =
BL. STA. 11+80.90, 33.6' RT.
INSTALL 5' DIA. STD. MANHOLE
MH TOP=1300.31
SEE SH. NO. 14

STA. 12+11.1, SWS LINE 1 =
BL. STA. 10+07.50, 19.0' RT.
INSTALL TYPE 1 CURB INLET
L=5', W=4', INLET TOP=1298.87
SEE SH. NO. 11

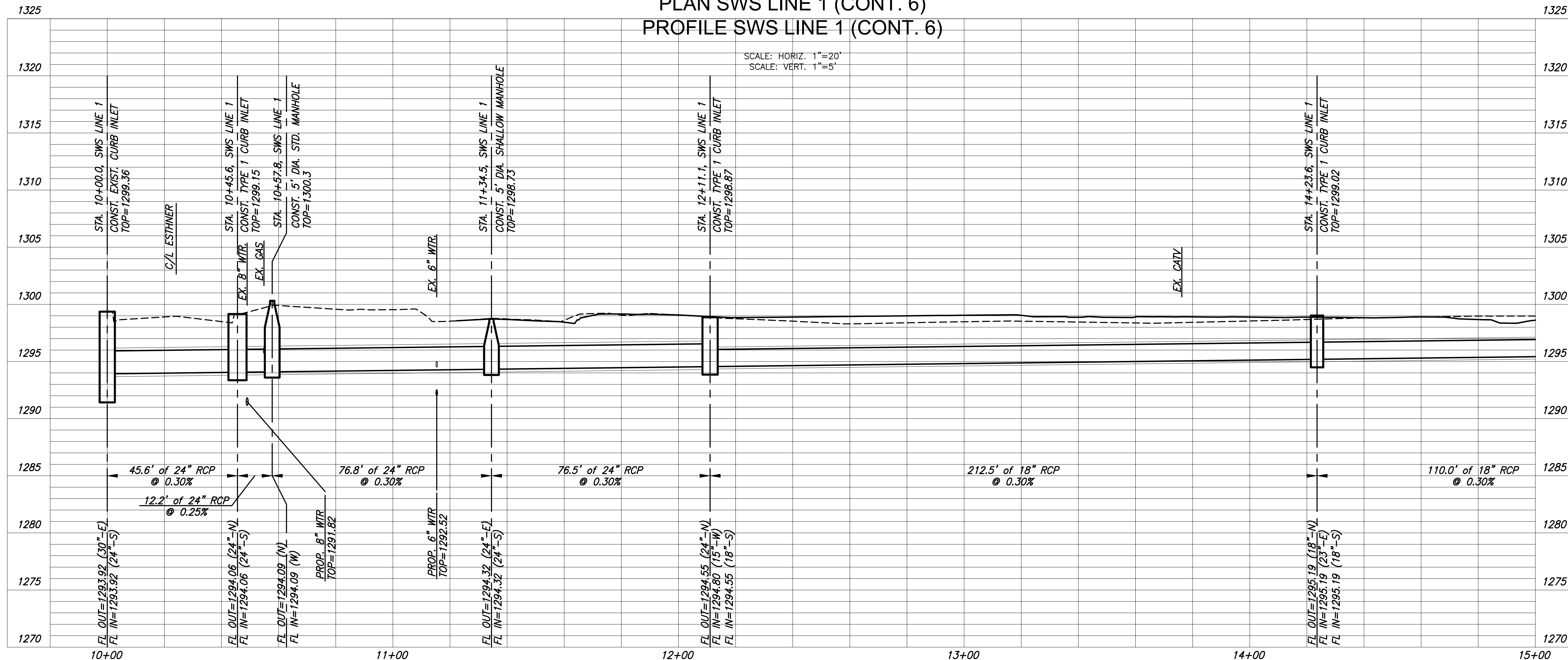
STA. 14+23.6, SWS LINE 1 =
BL. STA. 7+95.00, 18.5' RT.
INSTALL TYPE 1 CURB INLET
L=5', W=3', INLET TOP=1299.02
SEE SH. NO. 11



NOTE:
CONTRACTOR TO VERIFY THE
DEPTH AND LOCATION OF EXISTING
UTILITIES PRIOR TO CONSTRUCTION.



PLAN SWS LINE 1 (CONT. 6)
PROFILE SWS LINE 1 (CONT. 6)



PLANS FOR
ANNA STREET PAVING IMPROVEMENTS
WICHITA, KS

©2021
MKEC Engineering
All Rights Reserved
www.mkec.com
These drawings and their contents, including, but not limited to, all concepts, designs, & ideas are the exclusive property of MKEC Engineering (MKEC), and may not be used or reproduced in any way without the express consent of MKEC.

SWS LINE 1 PLAN AND PROFILE		
PROJECT NO.	19010483	
DATE	FEB. 2021	
SCALE	1"=20'	
DESIGNED	DRAWN	CHECKED
JRA	RAM	JRA
NO.	REVISION	DATE
SHEET NO. 6 OF 38		