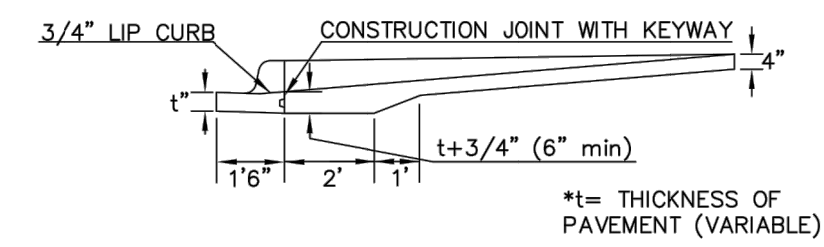
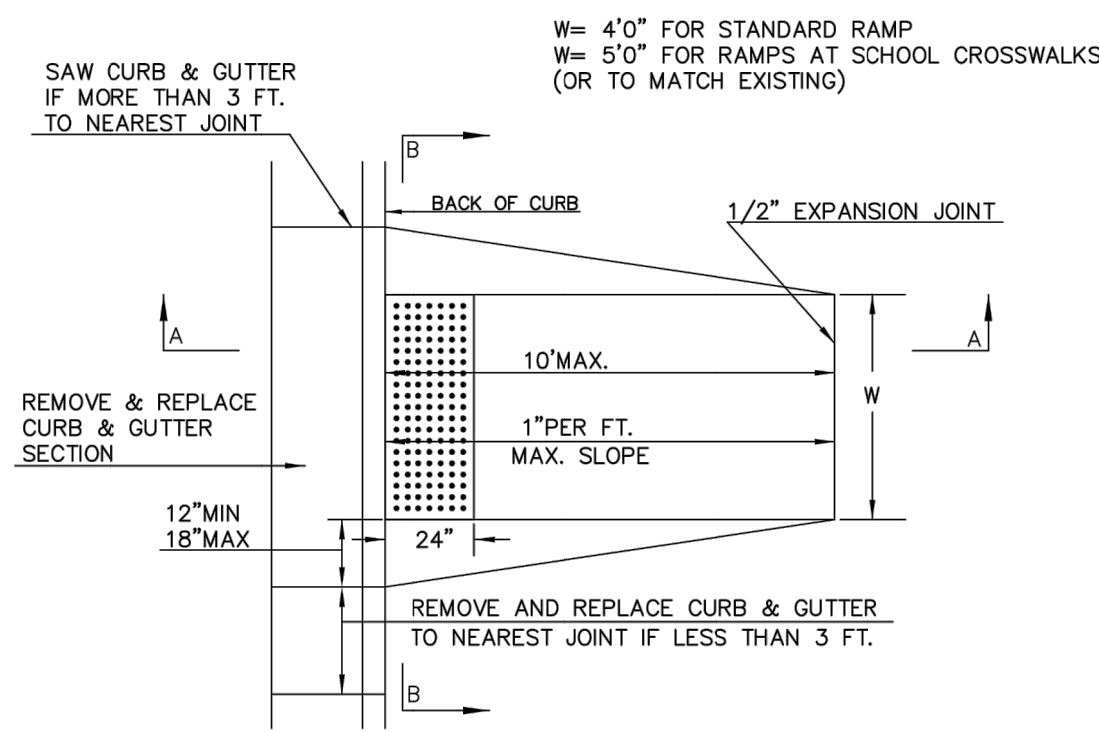
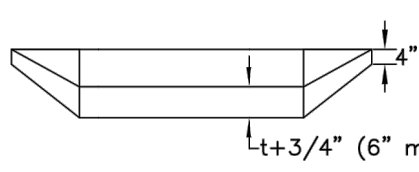


STANDARD WHEELCHAIR RAMP  
CONSTRUCTION DETAIL FOR STREETS  
WITH COMBINED CURB & GUTTER  
(TYPE A)

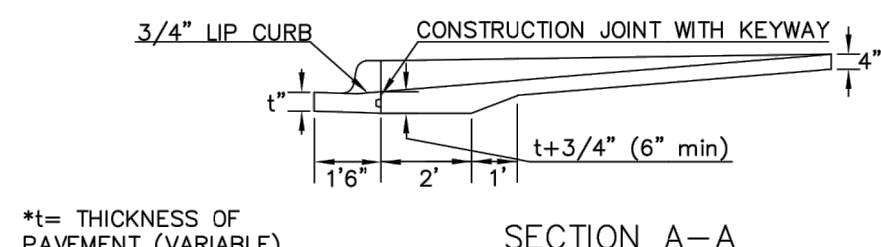
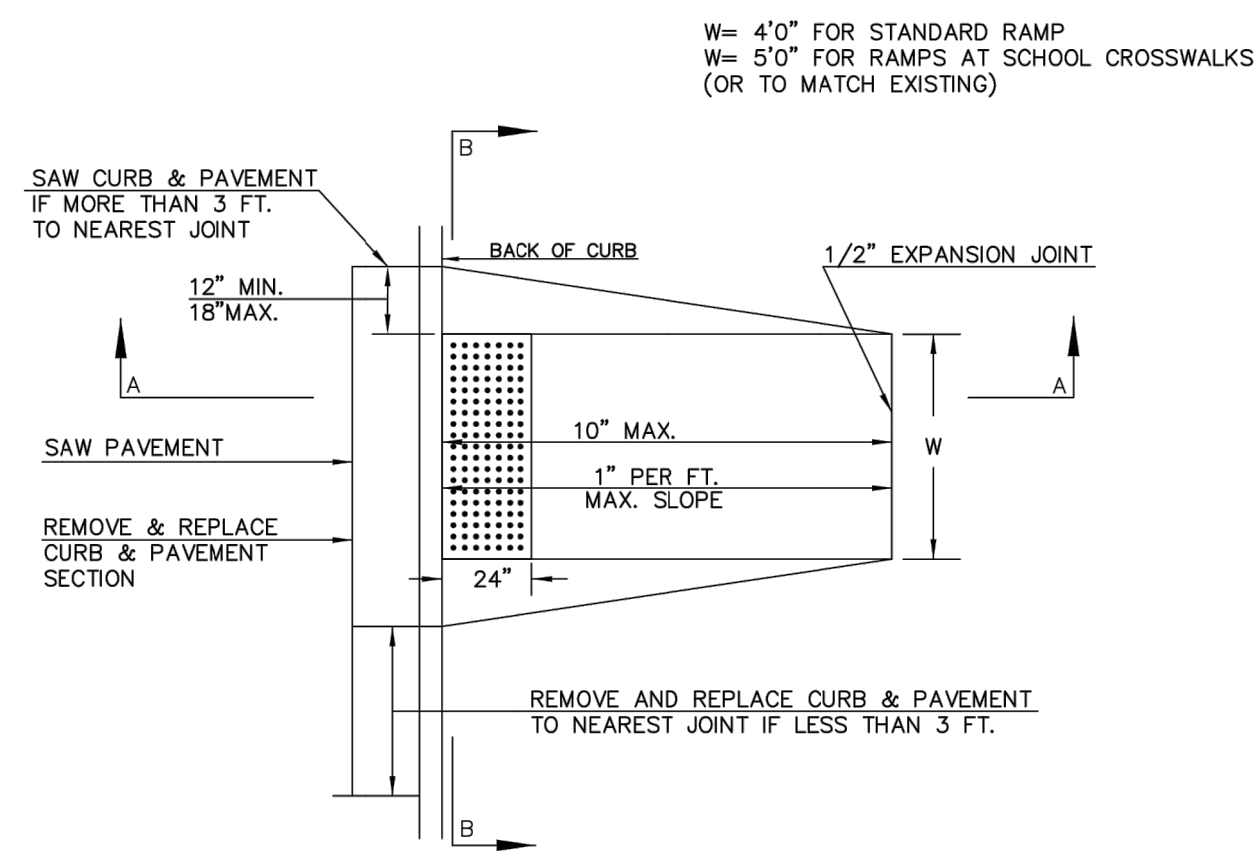


SECTION A-A

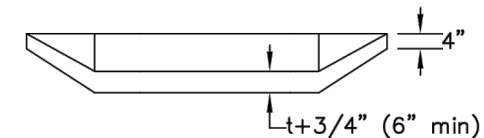


SECTION B-B

STANDARD WHEELCHAIR RAMP CONSTRUCTION DETAIL FOR  
CONCRETE STREETS WITH MONOLITHIC CURB  
(TYPE A)

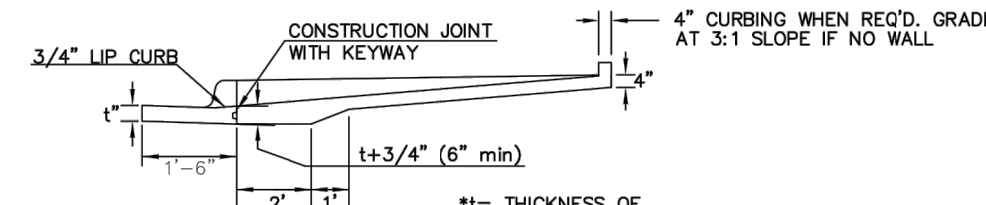
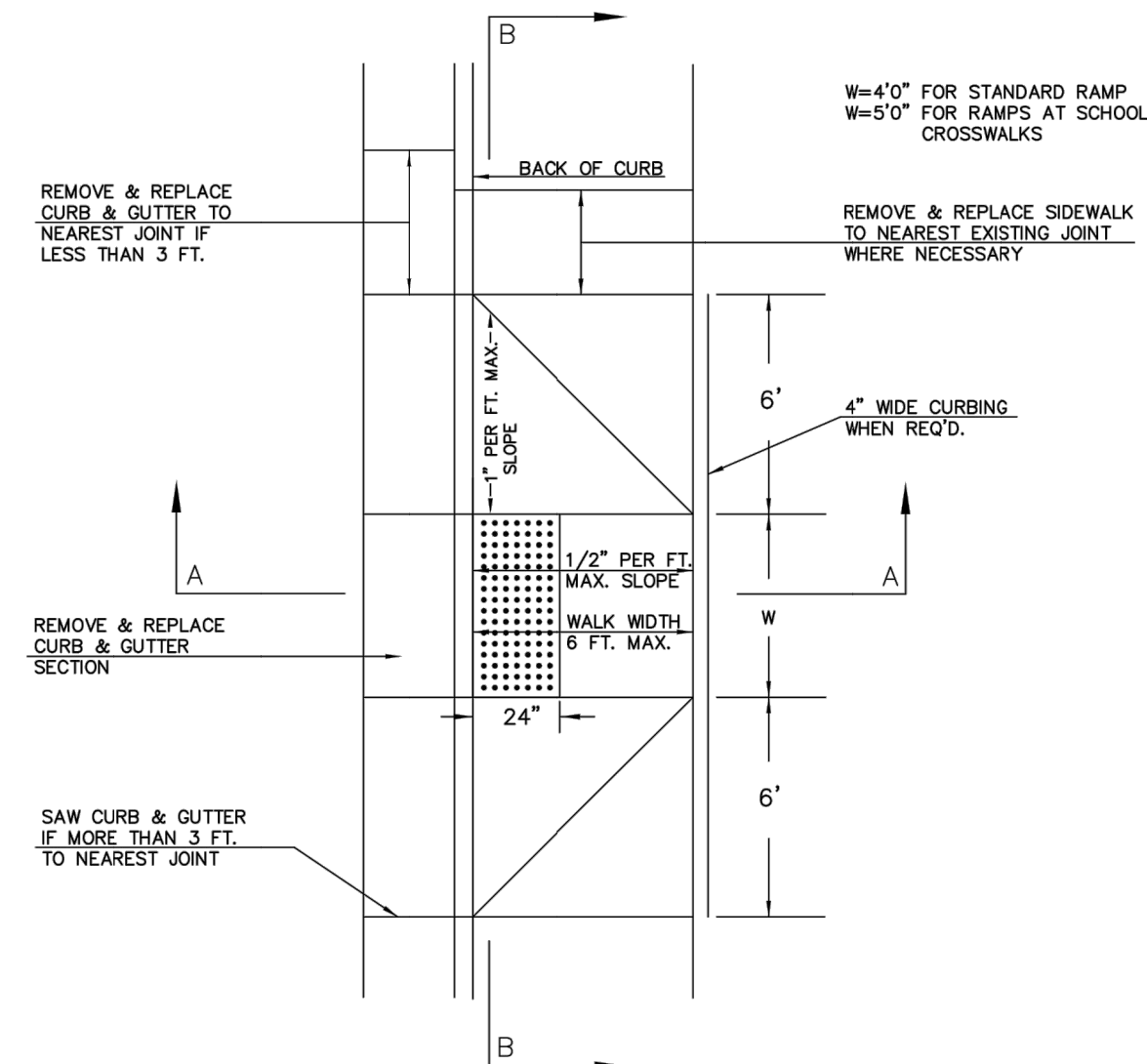


SECTION A-A

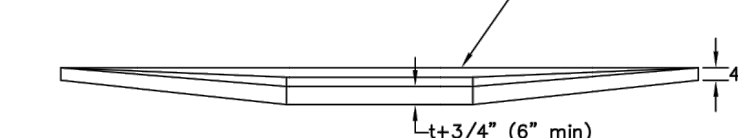


SECTION B-B

STANDARD WHEELCHAIR RAMP CONSTRUCTION DETAIL FOR  
STREETS WITH COMBINED CURB & GUTTER AND FULL WALK  
(TYPE B)

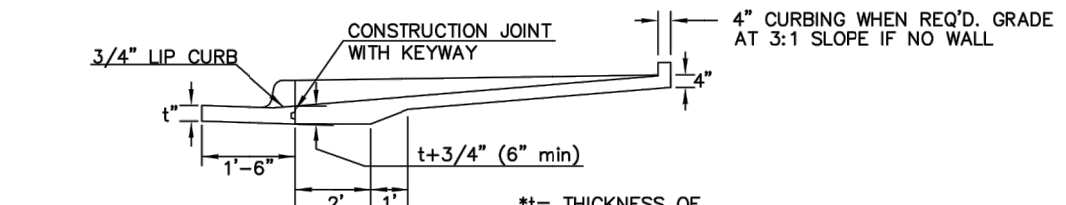
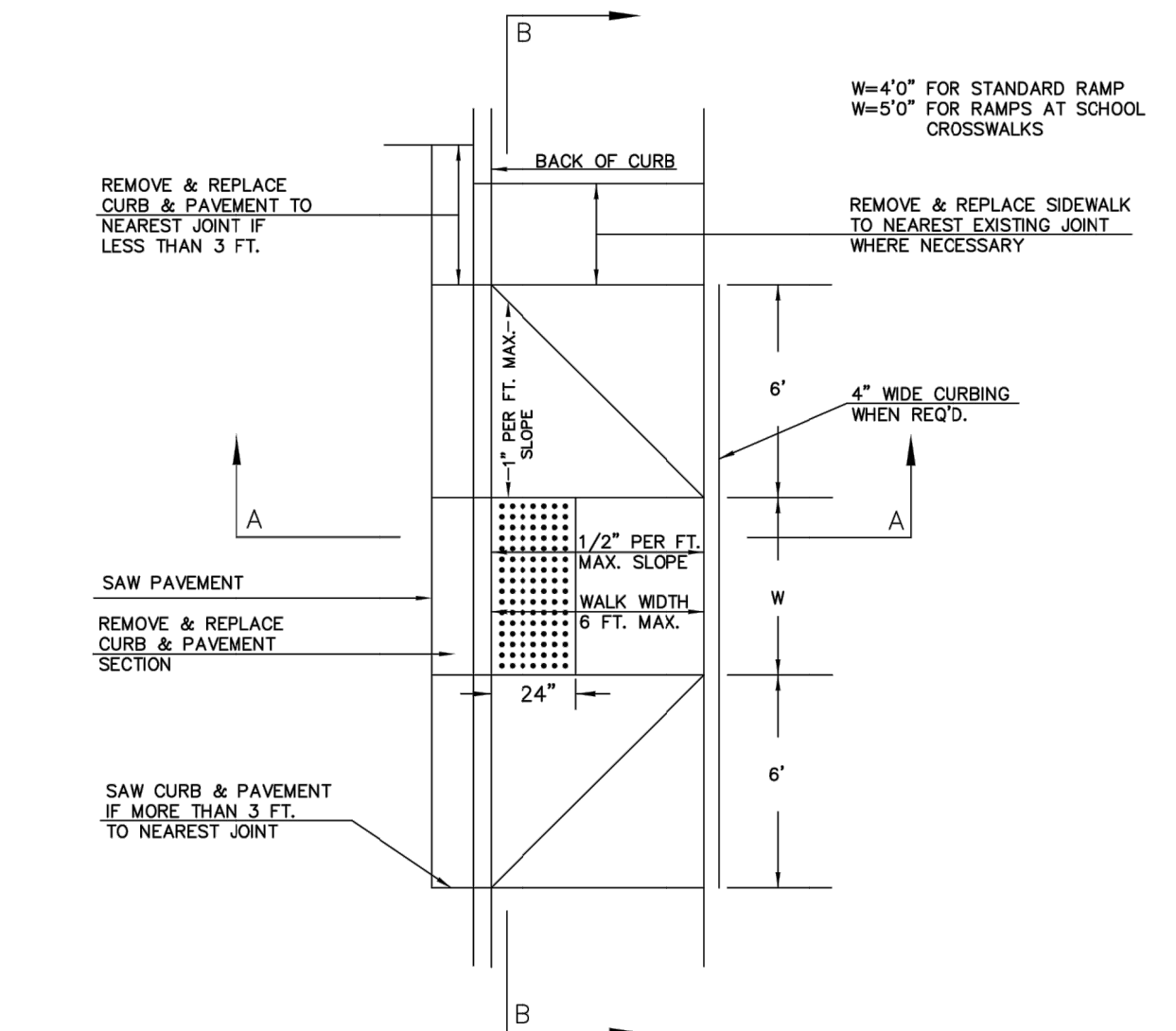


SECTION A-A



SECTION B-B

STANDARD WHEELCHAIR RAMP CONSTRUCTION DETAIL FOR  
STREETS WITH MONOLITHIC CURB AND FULL WALK  
(TYPE B)



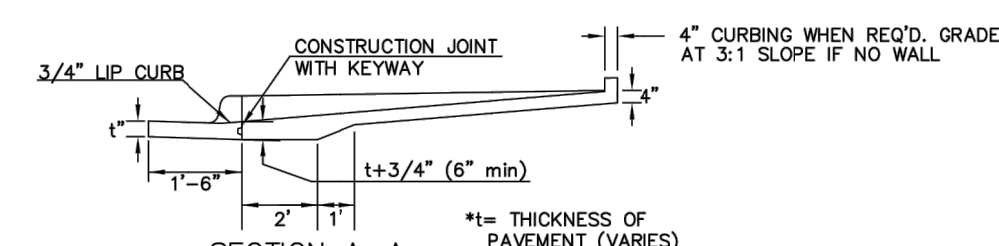
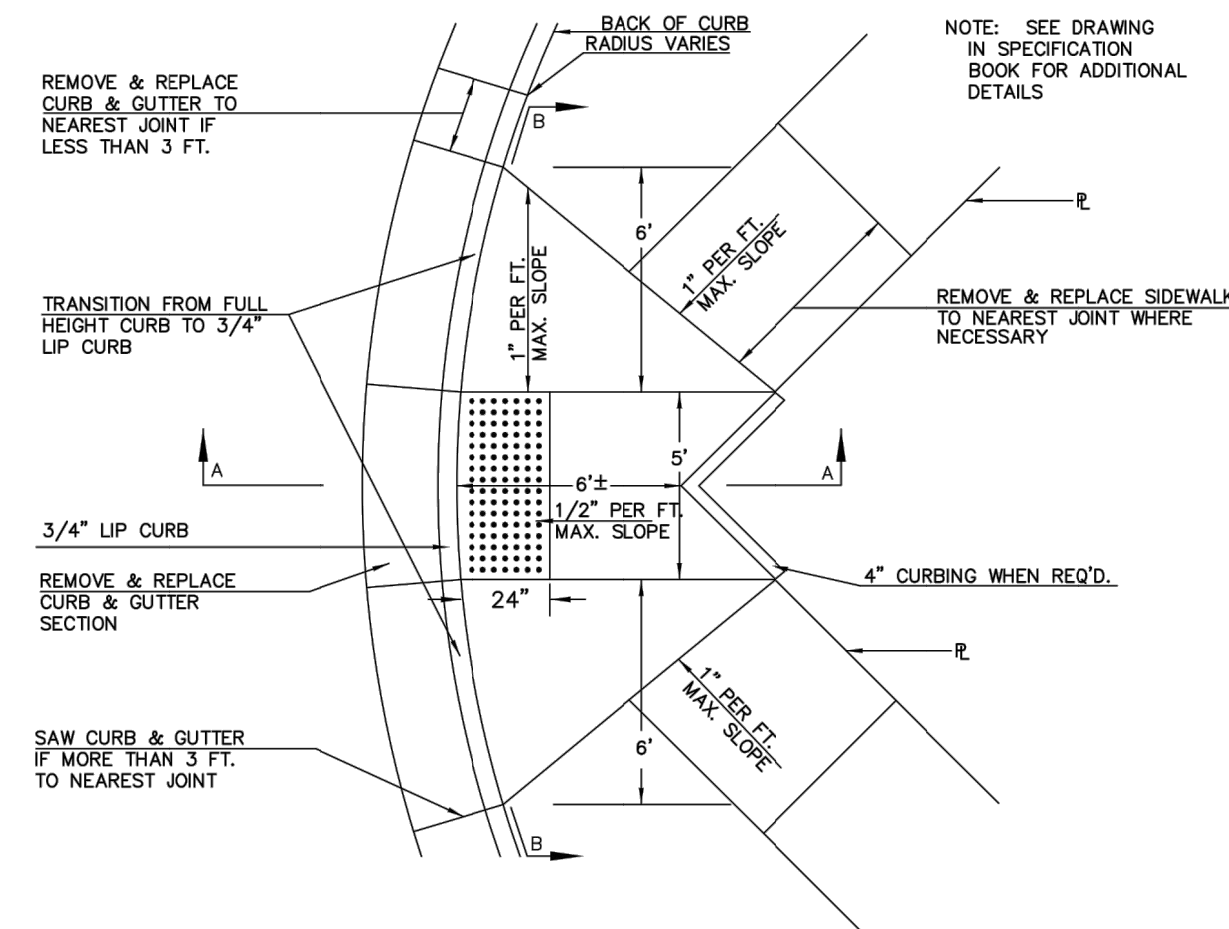
SECTION A-A



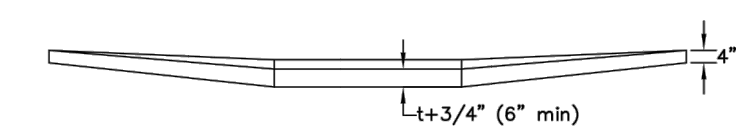
SECTION B-B



STANDARD WHEELCHAIR RAMP CONSTRUCTION DETAIL FOR  
STREET WITH COMBINED CURB AND GUTTER ON RADIUS  
WITH 6' ± FROM BACK OF CURB TO PROPERTY CORNER  
(TYPE C)

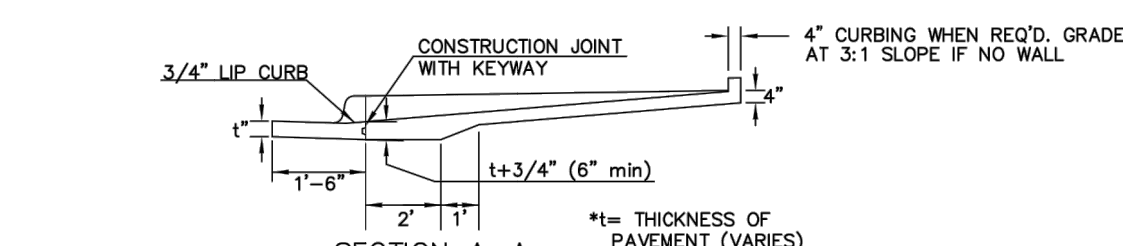
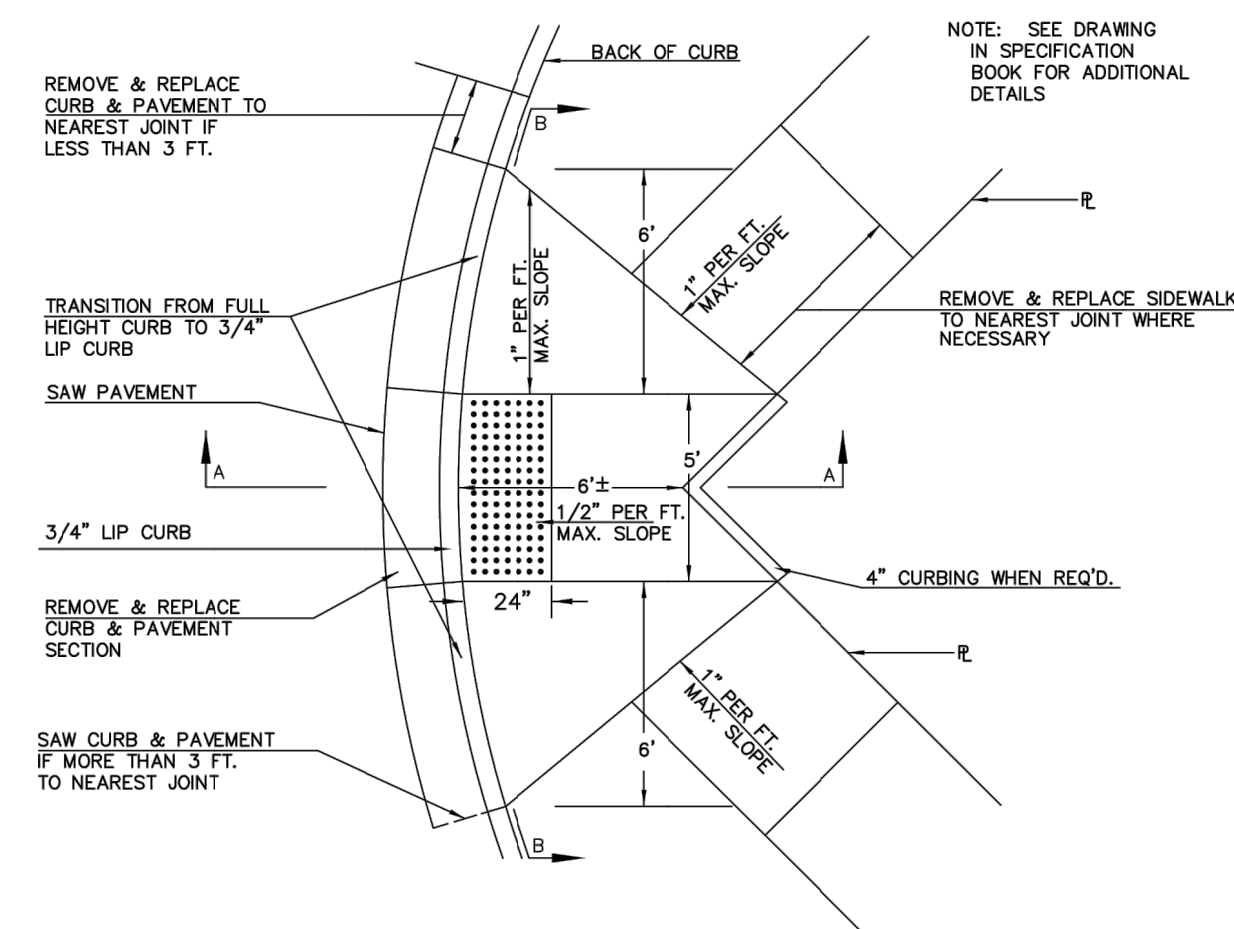


SECTION A-A

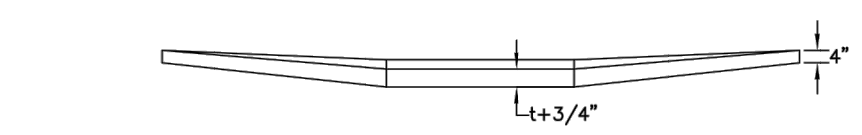


SECTION B-B

STANDARD WHEELCHAIR RAMP CONSTRUCTION DETAIL FOR  
STREET WITH MONOLITHIC CURB ON RADIUS  
WITH 6' ± FROM BACK OF CURB TO PROPERTY CORNER  
(TYPE C)

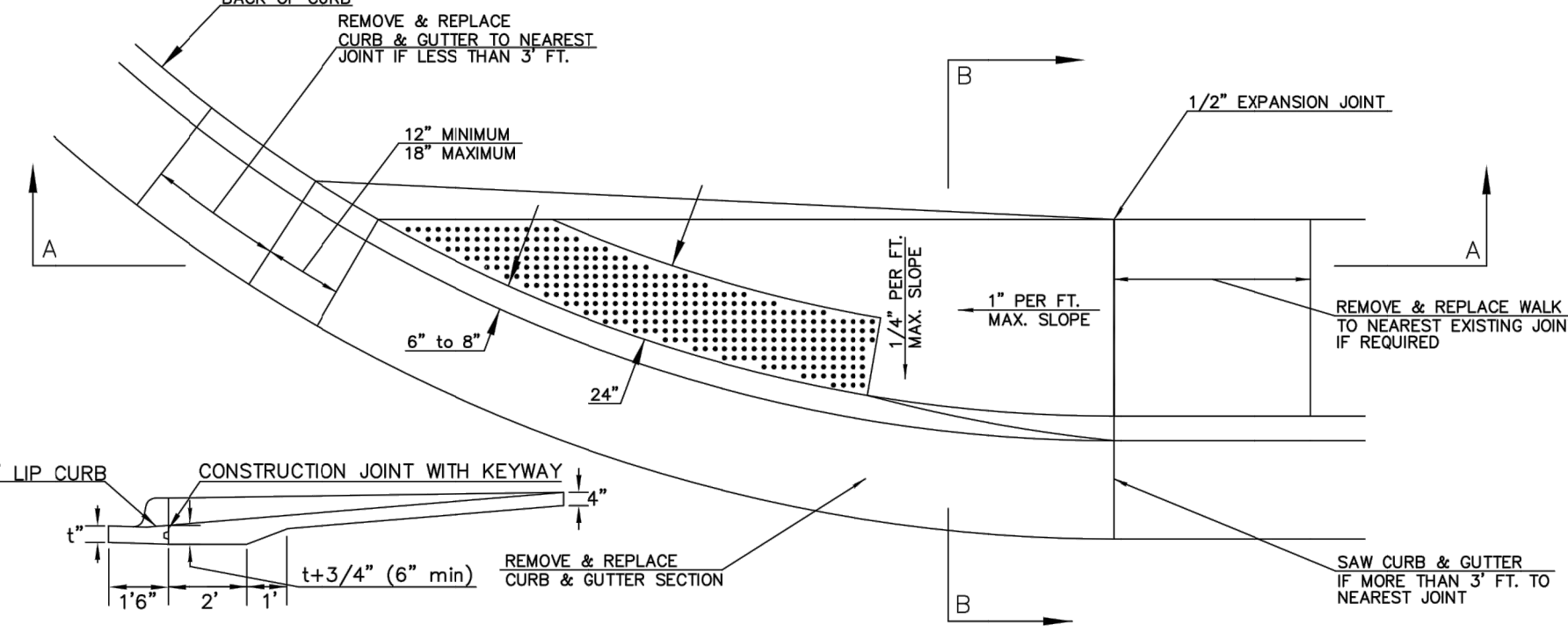


SECTION A-A

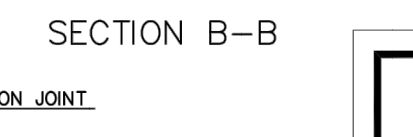
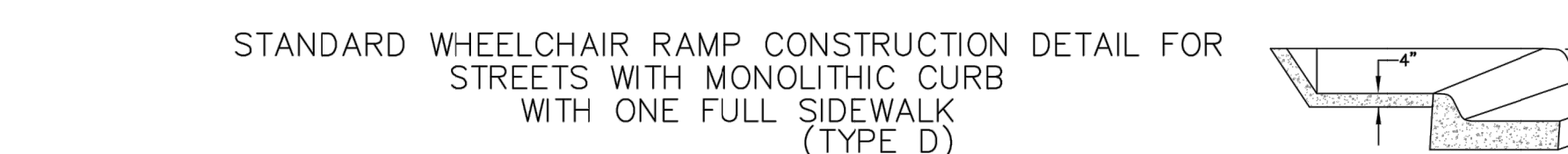


SECTION B-B

STANDARD WHEELCHAIR RAMP CONSTRUCTION DETAIL FOR  
STREETS WITH COMBINED CURB & GUTTER  
WITH ONE FULL SIDEWALK  
(TYPE D)

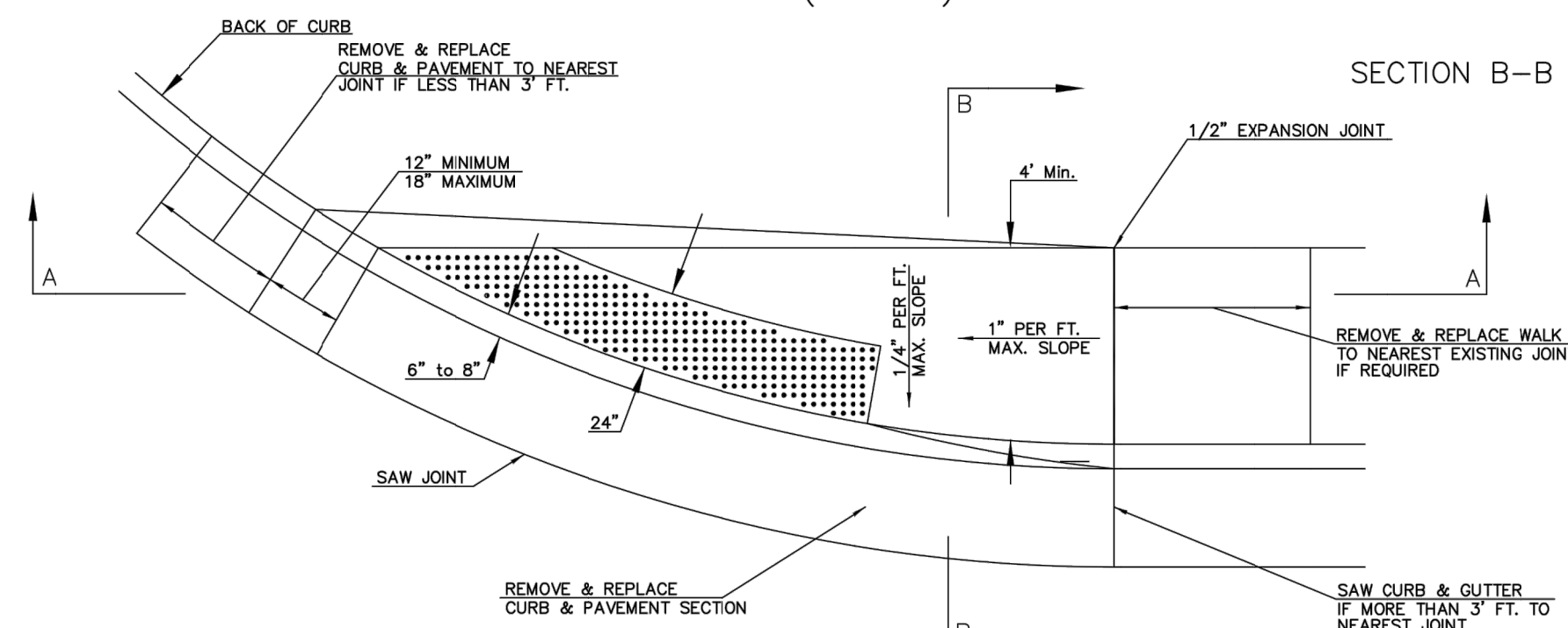


SECTION A-A

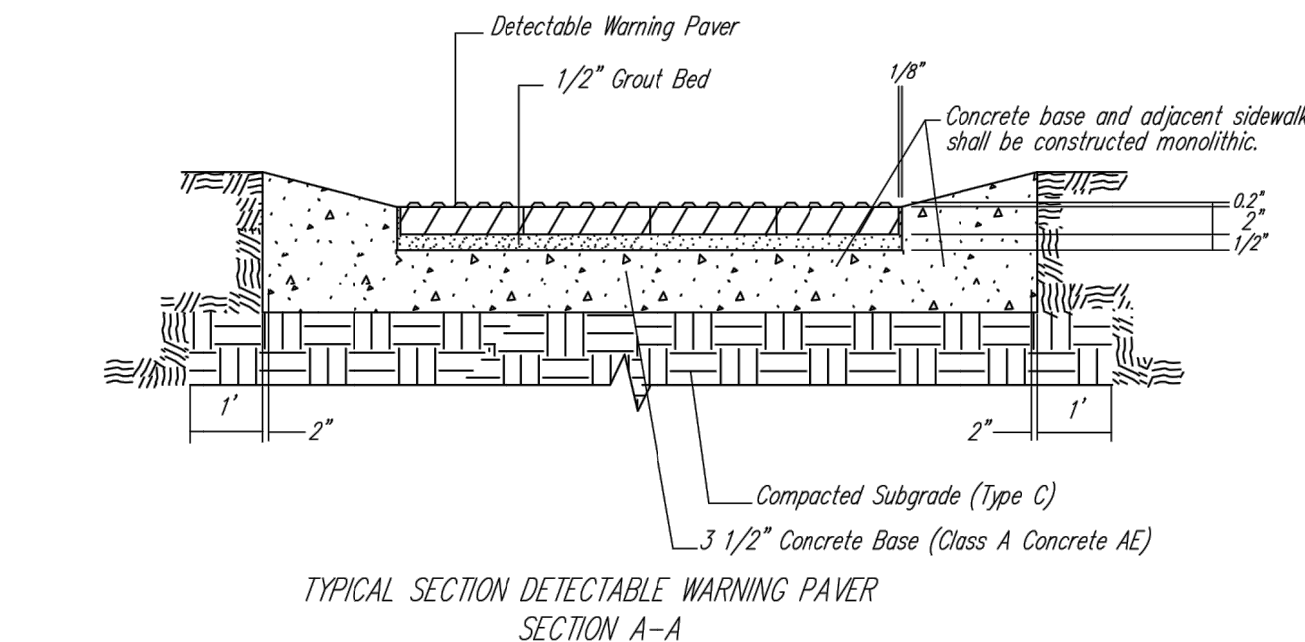


SECTION B-B

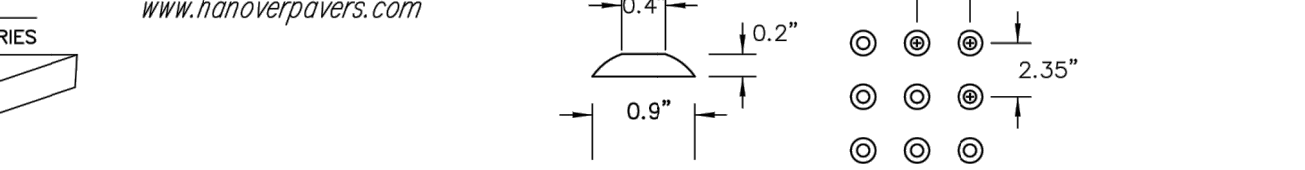
STANDARD WHEELCHAIR RAMP CONSTRUCTION DETAIL FOR  
STREETS WITH MONOLITHIC CURB  
WITH ONE FULL SIDEWALK  
(TYPE D)



SECTION A-A



NOTE: HANOVER DETECTABLE WARNING PAVERS (OR AN APPROVED ALTERNATE) SHALL BE USED IN ALL WHEELCHAIR RAMPS. THE 11 3/4" RED 15' PAVES SHALL BE USED IN ALL APPLICATIONS.  
HANOVER ARCHITECTURAL PRODUCTS  
240 BENDER ROAD  
HANOVER, PA 17331  
1-717-637-0500  
www.hanoverpavers.com



SECTION B-B



<b>WHEELCHAIR RAMP DETAILS WITH DETECTABLE WARNING</b>		
CITY ENGINEER <b>GARY JANZEN, P.E.</b>		
PROJECT NUMBER W0008 448-2020-005233	OCA NUMBER 820022 ORG CODE 54250020	DATE <b>08/2013</b>
CITY ENGINEER'S OFFICE CITY HALL - SEVENTH FLOOR 455 NORTH MAIN STREET WICHITA, KANSAS 67202-1620 (316) 268-4501		SHEET <b>13</b> of <b>13</b>