

REV.	DATE	DESCRIPTION



CITY OF WICHITA  
WICHITA, KANSAS

COWTOWN & MWTP  
WATER LINES

WATERLINE 1  
(1 of 4)

JOB NO.: 20T41002  
DATE: DEC. 2020  
DESIGNED BY: CMB  
DRAWN BY: DRS

BAR IS ONE INCH ON ORIGINAL DRAWING  
0" = 10' INCH ON THIS SHEET, ADJUST SCALES ACCORDINGLY.

DRAWING NUMBER  
SHEET NUMBER **4** OF **13**

NOTE:  
CONTRACTOR TO VERIFY LOCATION AND ELEVATION OF EXISTING WATER LINES PRIOR TO CONSTRUCTION.

BL Station	Lt./Rt.	Service (Long or Short)	Address	As Built
24+38	LT.	SHORT	1708 W. PINE	

REMOVE & REPLACE CONCRETE PAVEMENT ONLY AS NECESSARY FOR WATERLINE CONSTRUCTION. (6" CRUSHED ROCK BASE W/7" CONCRETE PAVEMENT (PLAIN).

NOTE: CONTRACTOR SHALL HAVE THE 3 RAW WATER LINES (NOT CURRENTLY IN USE) HYDRO-EXCAVATED FOR LOCATION AND DEPTH PRIOR TO CONSTRUCTION. COORDINATE WITH CITY OF WICHITA SURVEY TO HAVE SHOT THE GPS LOCATIONS AND DEPTH OF EACH EXPOSED WATER MAIN. REPORT FINDINGS TO DEB ARY. PAID FOR AS BID ITEM "Hydro Excavate Existing Raw Water Mains".

± 2.00 L.F. 8" DICL. 6"x8" MJ REDUCER & DICL PIPE AS NECESSARY FOR CONNECTION

N 1689260.91 E 1642363.98 STA. 3+77.70, WATERLINE 1 = STA. 23+76.87 PINE AVE., 2.00' LT 1-8" MJ CROSS \* CUT IN CROSS INTO 6" C.I. LINE 1-8" MJ GV ASS'Y. (E) VALVE BOX ELEV.=1299.65 ADDITIONAL FITTINGS MAY BE REQUIRED TO CONNECT TO EXISTING N-S LINE.

N 1689261.25 E 1642440.99 STA. 4+54.71, WATERLINE 1 = STA. 24+53.88 PINE AVE., 2.00' LT 1-8" MJ BEND 45°

N 1689259.29 E 1641995.71 STA. 0+09.42, WATERLINE 1 = STA. 20+08.59 PINE AVE., 2.00' LT 1-8" MJ BEND 45°

N 1689260.32 E 1642229.56 STA. 2+43.28, WATERLINE 1 = STA. 22+42.44 PINE AVE., 2.00' LT 1-8" MJ BEND 45° (VERT.)

N 1689260.45 E 1642258.60 STA. 2+72.32, WATERLINE 1 = STA. 22+71.48 PINE AVE., 2.00' LT 1-8" MJ BEND 45° (VERT.)

N 1689253.99 E 1641990.51 STA. 0+02.00, WATERLINE 1 = STA. 20+03.37 PINE AVE., 3.28' RT 1-8" MJ BEND 45°

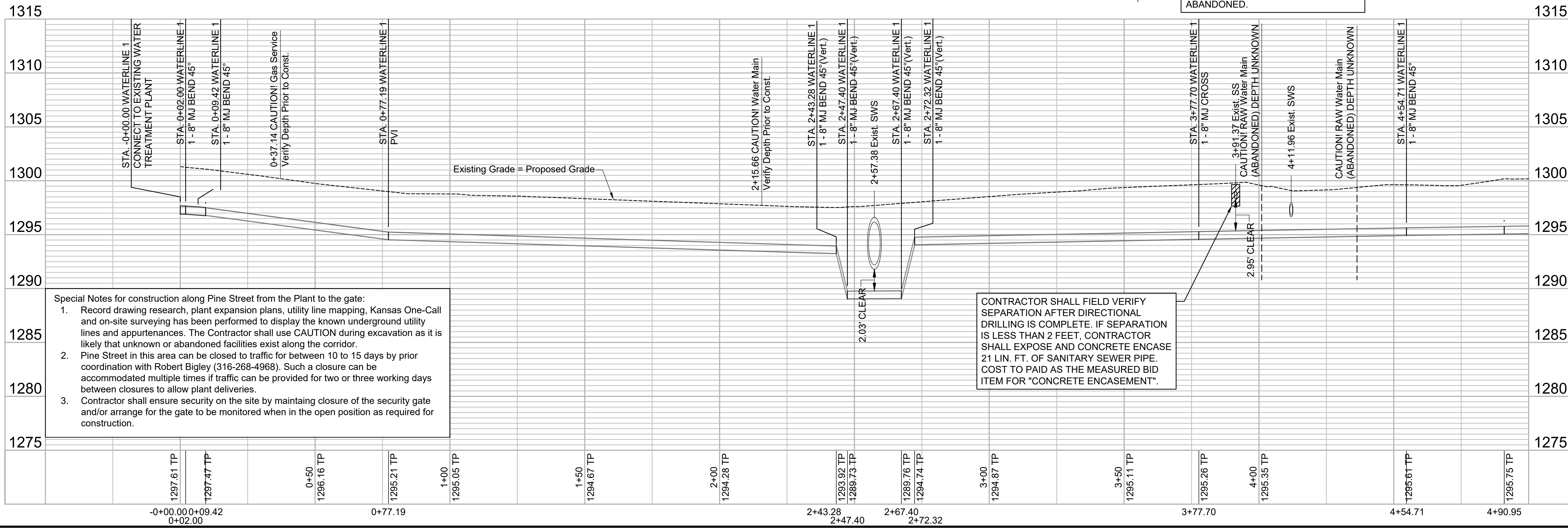
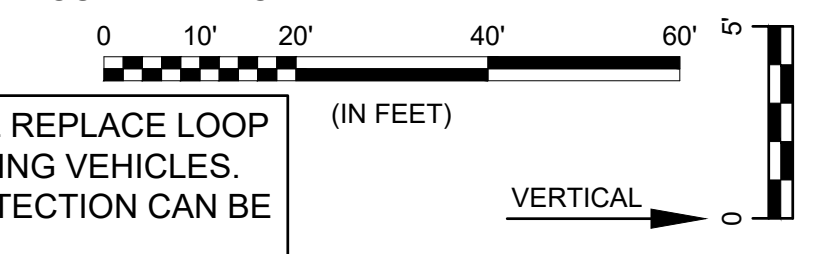
N 1689259.59 E 1642063.48 STA. 0+77.19, WATERLINE 1 = STA. 20+76.36 PINE AVE., 2.00' LT PVI

N 1689260.42 E 1642253.68 STA. 2+67.40, WATERLINE 1 = STA. 22+66.57 PINE AVE., 2.00' LT 1-8" MJ BEND 45° (VERT.)

N 1689260.34 E 1642233.68 STA. 2+47.40, WATERLINE 1 = STA. 22+46.57 PINE AVE., 2.00' LT 1-8" MJ BEND 45° (VERT.)

\* NOTE: City records indicate that there are 2 separate connections of the North-South water line to the existing 6" East-West water line. The proposed cross is the preferred connection method, however other accommodations to connect may have to be made.

CONTRACTOR SHALL REPLACE LOOP DETECTOR FOR EXITING VEHICLES. ENTRANCE LOOP DETECTION CAN BE ABANDONED.



Special Notes for construction along Pine Street from the Plant to the gate:

- Record drawing research, plant expansion plans, utility line mapping, Kansas One-Call and on-site surveying has been performed to display the known underground utility lines and appurtenances. The Contractor shall use CAUTION during excavation as it is likely that unknown or abandoned facilities exist along the corridor.
- Pine Street in this area can be closed to traffic for between 10 to 15 days by prior coordination with Robert Bigley (316-268-4968). Such a closure can be accommodated multiple times if traffic can be provided for two or three working days between closures to allow plant deliveries.
- Contractor shall ensure security on the site by maintaining closure of the security gate and/or arrange for the gate to be monitored when in the open position as required for construction.

CONTRACTOR SHALL FIELD VERIFY SEPARATION AFTER DIRECTIONAL DRILLING IS COMPLETE. IF SEPARATION IS LESS THAN 2 FEET, CONTRACTOR SHALL EXPOSE AND CONCRETE ENCASE 21 LIN. FT. OF SANITARY SEWER PIPE. COST TO PAID AS THE MEASURED BID ITEM FOR "CONCRETE ENCASEMENT".

File: L:\2020\20T41002 - Cowtown and MWTP Water Lines\Drawings\C3D\Sheets\WATERLINE 1 - (1).dwg Last Save: 12/7/2020 10:46 AM Last saved by: DRStandrich Last plotted by: Standrich, Darryl R. Plot Style: --- Plot Scale: 1:2.585 Plot Date: 12/11/2020 11:22 AM Plotter used: None