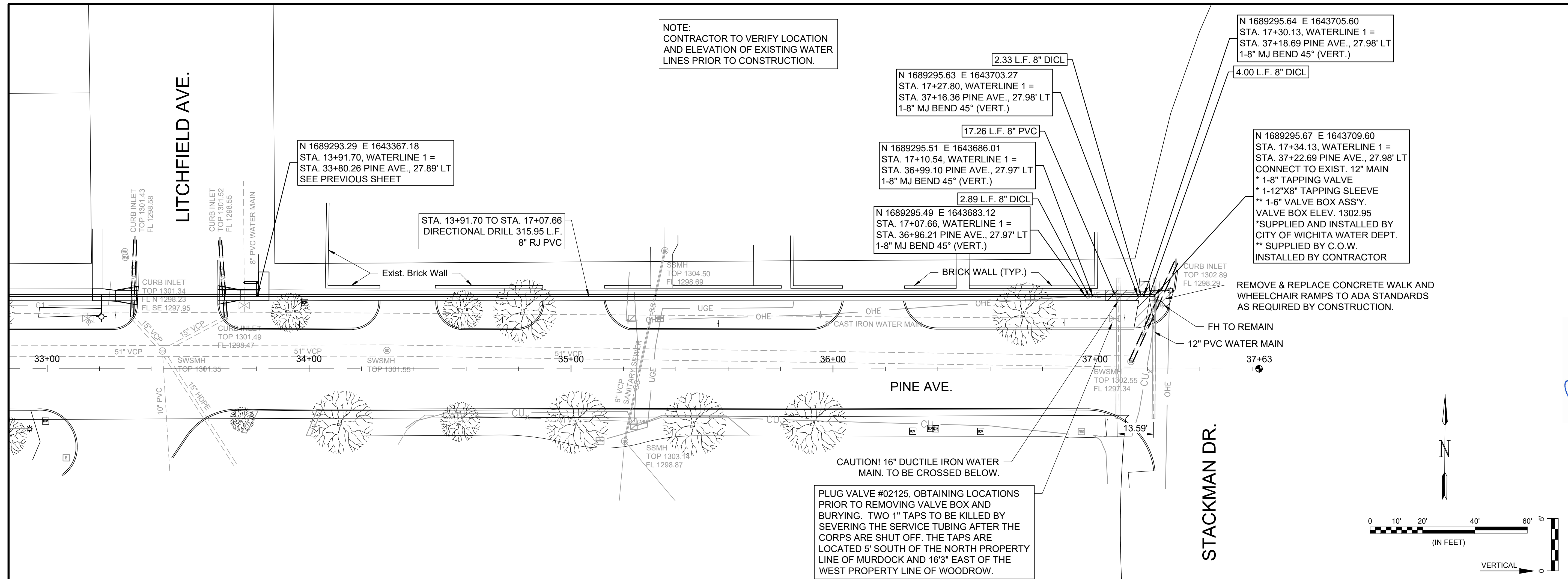


File: L:\2020\20T41002 - COWTOWN and MWTP Water Lines\Drawings\C3D\Sheets\WATERLINE 1 - (4).dwg Last Save: 12/3/2020 1:32 PM Last saved by: DRS\standrich
 Last plotted by: Standrich, Darryl R. Plot Style: --- Plot Scale: 1:2,585 Plot Date: 12/11/2020 11:24 AM Plotter used: None



NOTE:
 CONTRACTOR TO VERIFY LOCATION
 AND ELEVATION OF EXISTING WATER
 LINES PRIOR TO CONSTRUCTION.

N 1689293.29 E 1643367.18
 STA. 13+91.70, WATERLINE 1 =
 STA. 33+80.26 PINE AVE., 27.89' LT
 SEE PREVIOUS SHEET

N 1689295.63 E 1643703.27
 STA. 17+27.80, WATERLINE 1 =
 STA. 37+16.36 PINE AVE., 27.98' LT
 1-8" MJ BEND 45° (VERT.)

N 1689295.64 E 1643705.60
 STA. 17+30.13, WATERLINE 1 =
 STA. 37+18.69 PINE AVE., 27.98' LT
 1-8" MJ BEND 45° (VERT.)

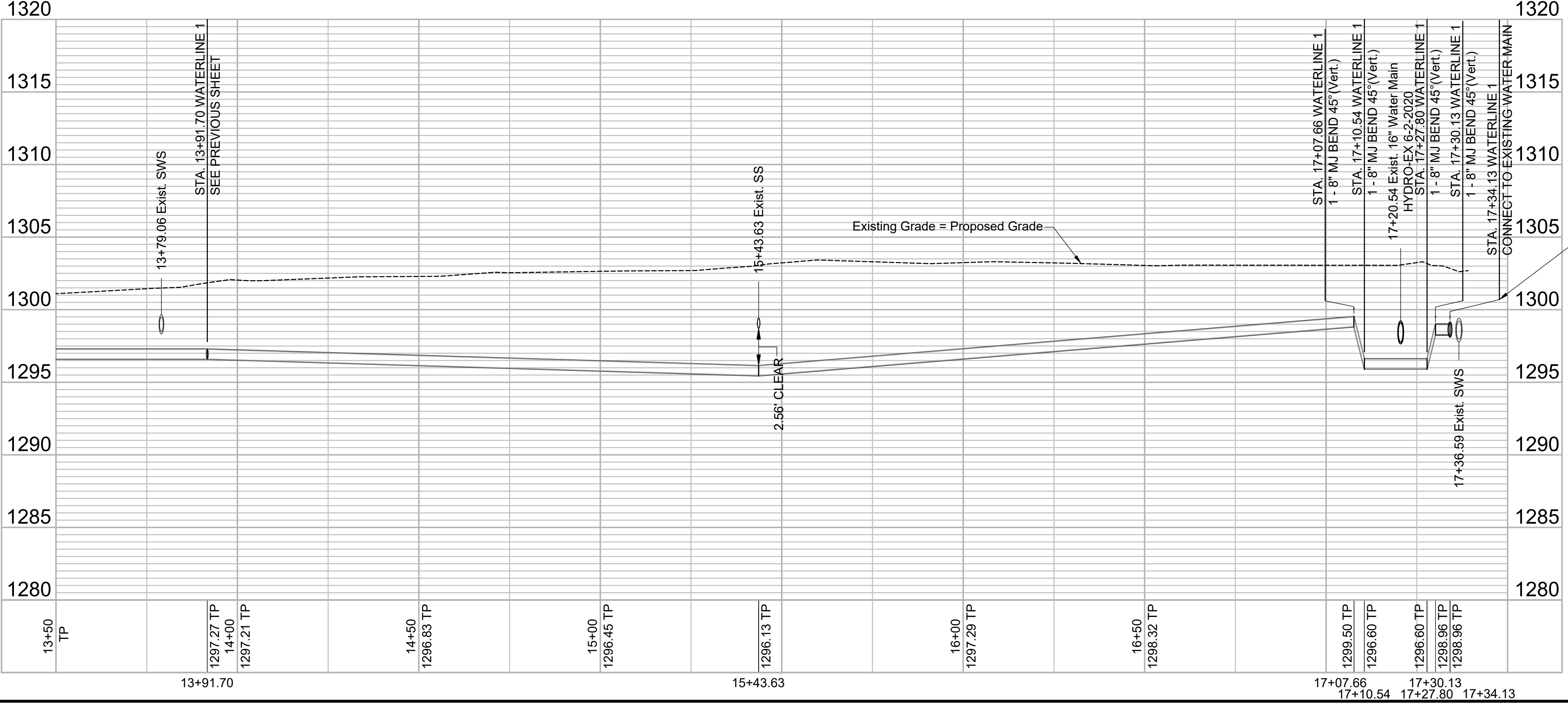
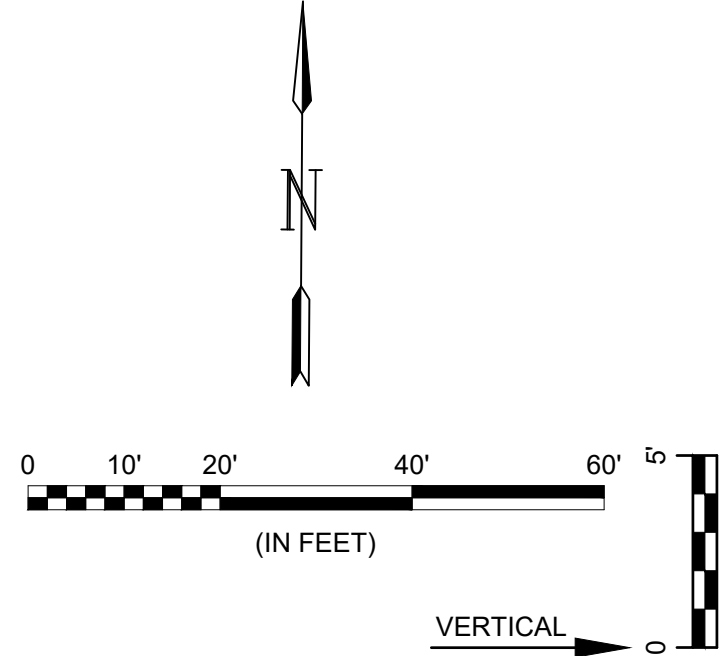
N 1689295.51 E 1643686.01
 STA. 17+10.54, WATERLINE 1 =
 STA. 36+99.10 PINE AVE., 27.97' LT
 1-8" MJ BEND 45° (VERT.)

N 1689295.67 E 1643709.60
 STA. 17+34.13, WATERLINE 1 =
 STA. 37+22.69 PINE AVE., 27.98' LT
 CONNECT TO EXIST. 12" MAIN
 * 1-8" TAPPING VALVE
 * 1-12"X8" TAPPING SLEEVE
 * 1-6" VALVE BOX ASSY.
 VALVE BOX ELEV. 1302.95
 * SUPPLIED AND INSTALLED BY
 CITY OF WICHITA WATER DEPT.
 ** SUPPLIED BY C.O.W.
 INSTALLED BY CONTRACTOR

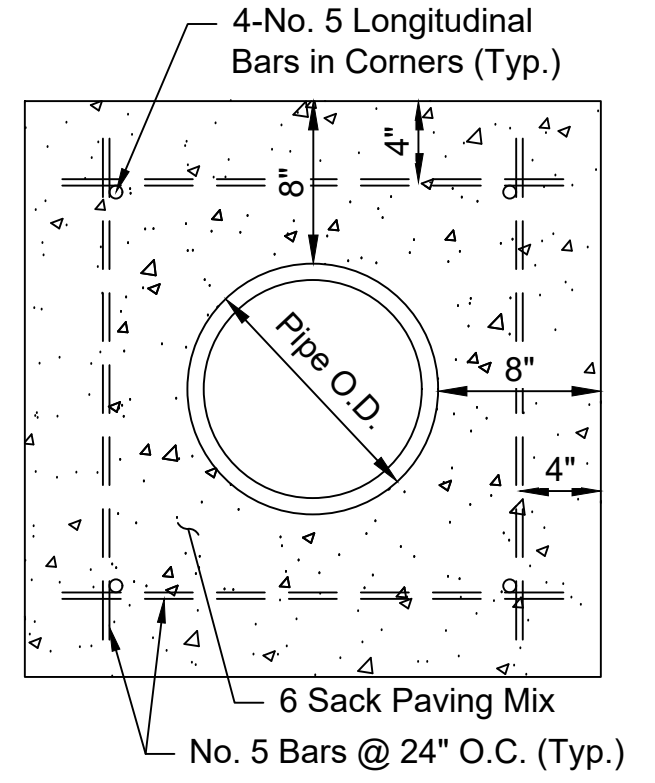
N 1689295.49 E 1643683.12
 STA. 17+07.66, WATERLINE 1 =
 STA. 36+96.21 PINE AVE., 27.97' LT
 1-8" MJ BEND 45° (VERT.)

REMOVE & REPLACE CONCRETE WALK AND
 WHEELCHAIR RAMPS TO ADA STANDARDS
 AS REQUIRED BY CONSTRUCTION.

CAUTION! 16" DUCTILE IRON WATER
 MAIN. TO BE CROSSED BELOW.
 PLUG VALVE #02125, OBTAINING LOCATIONS
 PRIOR TO REMOVING VALVE BOX AND
 BURYING. TWO 1" TAPS TO BE KILLED BY
 SEVERING THE SERVICE TUBING AFTER THE
 CORPS ARE SHUT OFF. THE TAPS ARE
 LOCATED 5' SOUTH OF THE NORTH PROPERTY
 LINE OF MURDOCK AND 163" EAST OF THE
 WEST PROPERTY LINE OF WOODROW.



NOTE: THE 12" WATER LINE COULD
 NOT BE HYDRO-EXCAVATED AND
 INDICATED DEPTH IS FROM PLAN
 INFORMATION. CONTRACTOR
 SHALL ADJUST CONNECTION AS
 NECESSARY.



© 2020 GARVER, LLC
 THIS DOCUMENT, ALONG WITH THE
 IDEAS AND DESIGNS CONVEYED
 HEREIN, SHALL BE CONSIDERED
 INSTRUMENTS OF PROFESSIONAL
 SERVICE AND ARE PROPERTY OF
 GARVER, LLC. ANY USE,
 REPRODUCTION, OR DISTRIBUTION
 OF THIS DOCUMENT, ALONG WITH
 THE IDEAS AND DESIGNS CONTAINED
 HEREIN, IS PROHIBITED UNLESS
 AUTHORIZED IN WRITING BY
 GARVER, LLC OR EXPLICITLY
 ALLOWED IN THE GOVERNING
 PROFESSIONAL SERVICES
 AGREEMENT FOR THIS WORK.

8535 E. 21st St. N.
 Suite 130
 Wichita, KS 67206
 (316) 264-8008



REV.	DATE	DESCRIPTION	BY



CITY OF WICHITA
 WICHITA, KANSAS
 COWTOWN & MWTP
 WATER LINES

WATERLINE 1
 (4 of 4)

JOB NO.: 20T41002
 DATE: DEC. 2020
 DESIGNED BY: CMB
 DRAWN BY: DRS

BAR IS ONE INCH ON
 ORIGINAL DRAWING
 IF NOT ONE INCH ON THIS SHEET,
 ADJUST SCALES ACCORDINGLY.

DRAWING NUMBER

SHEET
 NUMBER **7** OF **13**