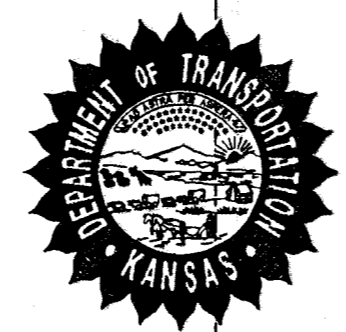


FHWA REGION NO.	STATE	PROJECT NO.	YEAR	SHEET NO.	TOTAL SHEETS
7	KANSAS	81-87 K-5985-01	1997	1	18

INDEX OF SHEETS

SHEET NO.:	1	TITLE SHEET
	2	PLAN SHEET, GENERAL NOTES AND TYPICAL SECTIONS
	3	CURB, GUTTER AND COMBINED CURB & GUTTER
	4	CONCRETE PAVEMENT, DOWEL JOINTED, NON-REINFORCED
	5	SUMMARY OF QUANTITIES
	6	EROSION CONTROL, SEEDING-SODDING, SUMMARY OF SEEDING QUANTITIES
	7-11	TEMPORARY PROJECT WATER POLLUTION CONTROL (SOIL EROSION)
	12	TRAFFIC CONTROL - GENERAL NOTES
	13	CONSTRUCTION TRAFFIC CONTROL PLAN
	14	SUMMARY OF DEVICES AND RECAPITULATION OF QUANTITIES
	15	DESIGN DETAILS FOR BARRICADES, CHANNELIZING DEVICES AND SIGN MOUNTING LOCATIONS
	16	TYPICAL TRAFFIC CONTROL SIGNS
	17	TYPE III BARRICADE (FIXED)
	18	CROSS-SECTIONS

STATE OF KANSAS  
DEPARTMENT OF TRANSPORTATION



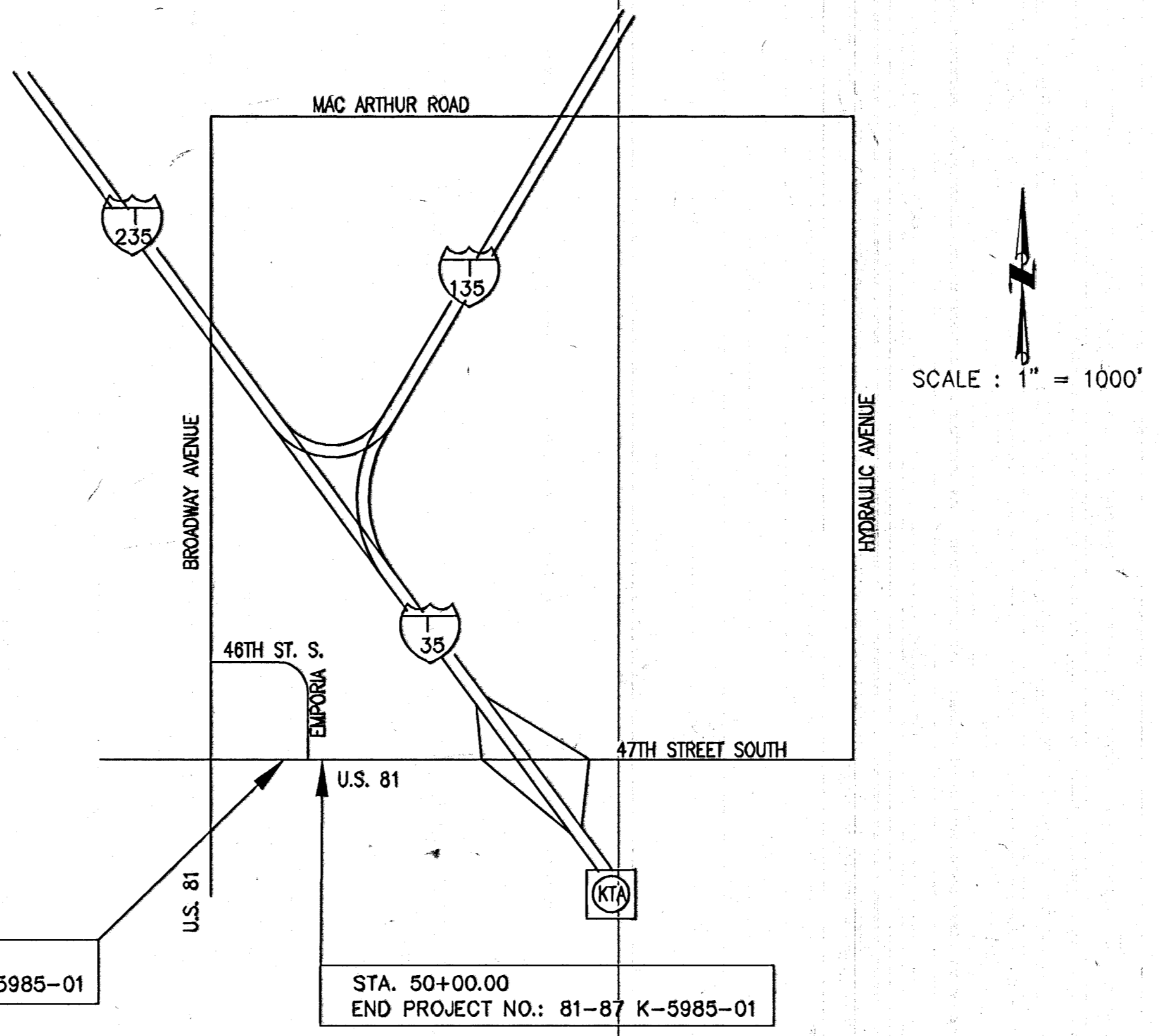
PLAN AND PROFILE OF PROPOSED  
STATE HIGHWAY  
KANSAS PROJECT

U.S.-81 (47TH STREET SOUTH) AND EMPORIA INTERSECTION  
WICHITA, SEDGWICK COUNTY, KANSAS  
POPULATION = 311,746

GRADING  
CONCRETE PAVEMENT  
SODDING

DATE	
BY	
SURVEYED	
PLOTTED	
INKED	
DESIGNED	
SQUAD	

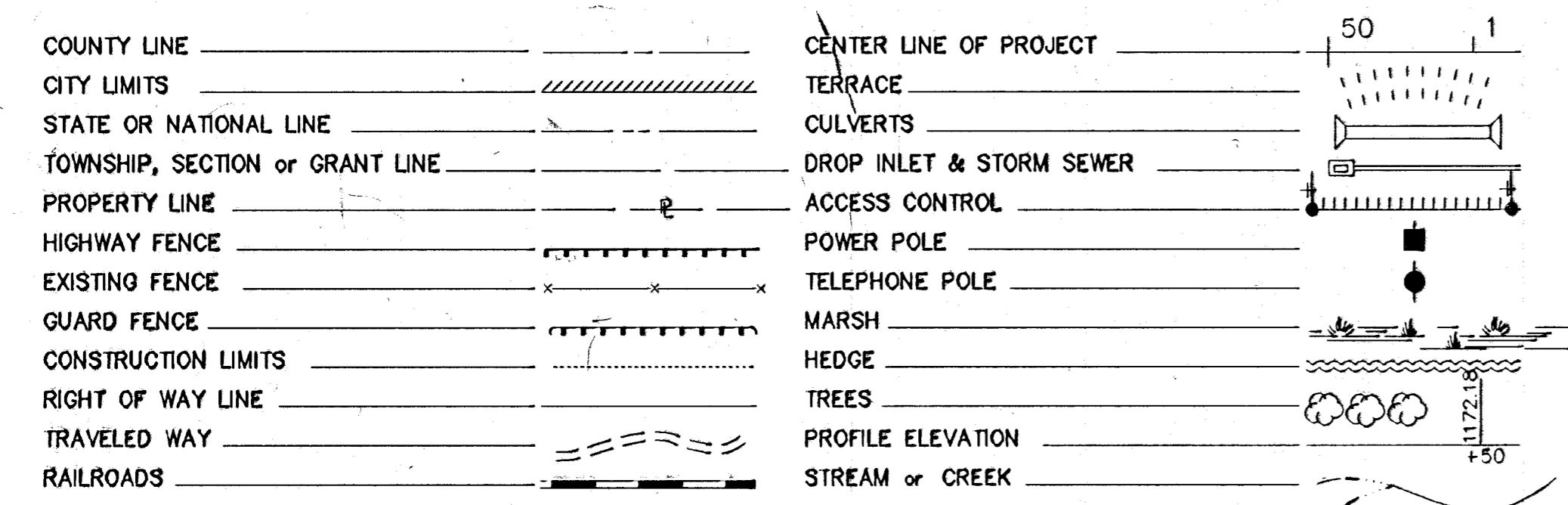
DESIGN DESIGNATION  
DESIGN SPEED = 40 MPH  
47TH STREET SOUTH  
22,142 (AADT-1995)  
32,902 (AADT-2015)



SCALE : 1" = 1000'

TRAFFIC TO BE CARRIED THROUGH CONSTRUCTION, SEE SHEET 13 FOR CONSTRUCTION TRAFFIC CONTROL PLAN.

CONVENTIONAL SIGNS



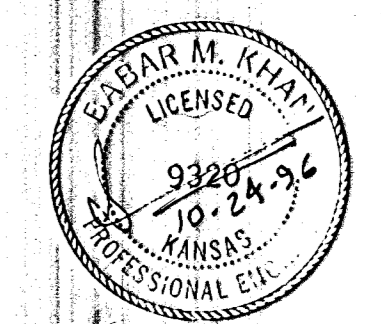
GROSS LENGTH OF PROJECT	170.66	FT.	
EXCEPTIONS	0.00		
ADDITIONS	0.00		
NET LENGTH OF PROJECT	170.66	FT.	0.0323 MILES
NET LENGTH OF BRIDGES	0.00	FT.	0.00 MILES
NET LENGTH OF ROAD	170.66	FT.	0.0323 MILES

RECOM. FOR APPROVAL-DATE

CHIEF, BUREAU OF TRAFFIC ENGINEERING  
KANSAS DEPARTMENT OF TRANSPORTATION

APPROVED - DATE

STATE TRANSPORTATION ENGINEER  
KANSAS DEPARTMENT OF TRANSPORTATION



PLANS BY: BABAR M. KHAN, P.E.  
MUNICIPAL ENGINEERS  
254-LAURA, SUITE 201  
WICHITA, KANSAS 67211  
316-262-3842

APPROVED-DATE 10-25-96  
MICHAEL E. LINDEBAK, P.E.  
CITY ENGINEER  
CITY OF WICHITA, SEDGWICK COUNTY, KANSAS