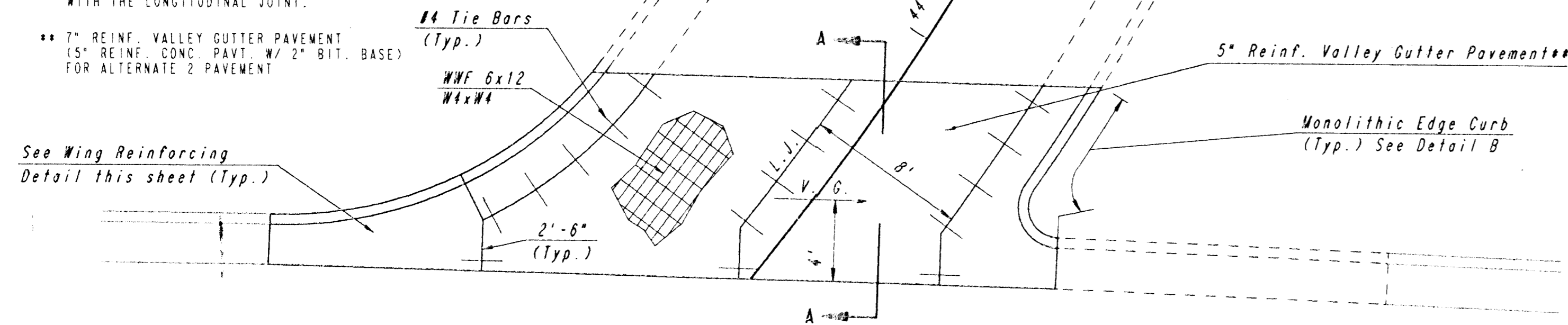


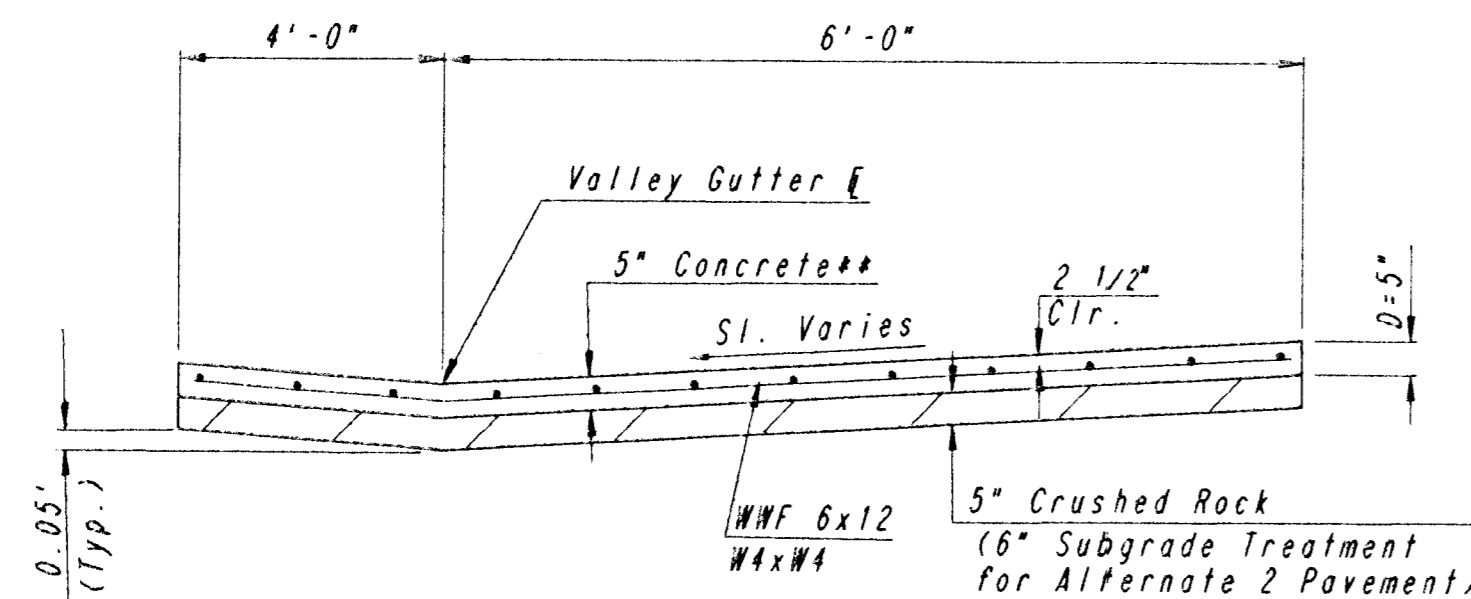
SCALE: 1" = 5'

6"x12" W4xW4 WIRE FABRIC REINFORCING SHALL BE PLACED SUCH THAT THE WIRES WITH THE 6" SPACINGS WILL RUN PARALLEL WITH THE LONGITUDINAL JOINT.

** 7" REINF. VALLEY GUTTER PAVEMENT (5" REINF. CONC. PAVT. W/ 2" BIT. BASE) FOR ALTERNATE 2 PAVEMENT



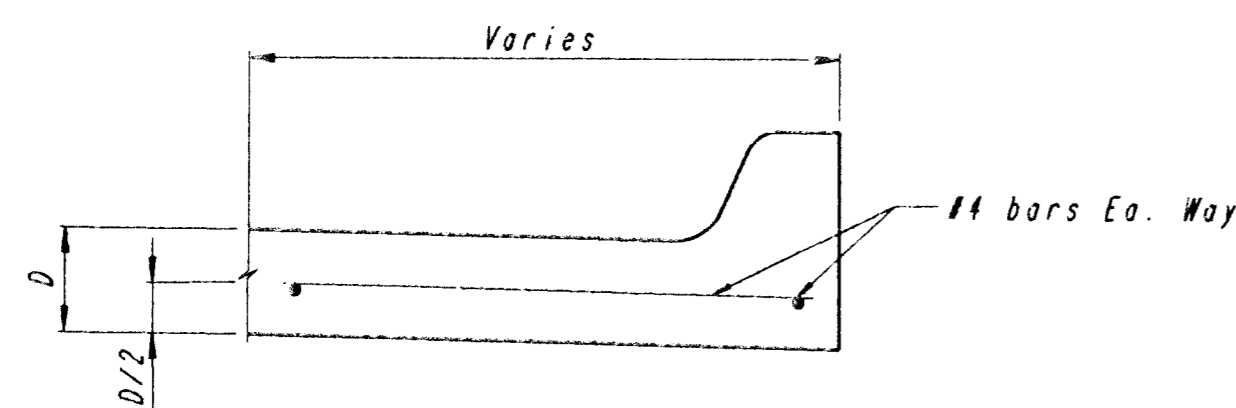
PLAN
REINFORCED VALLEY GUTTER



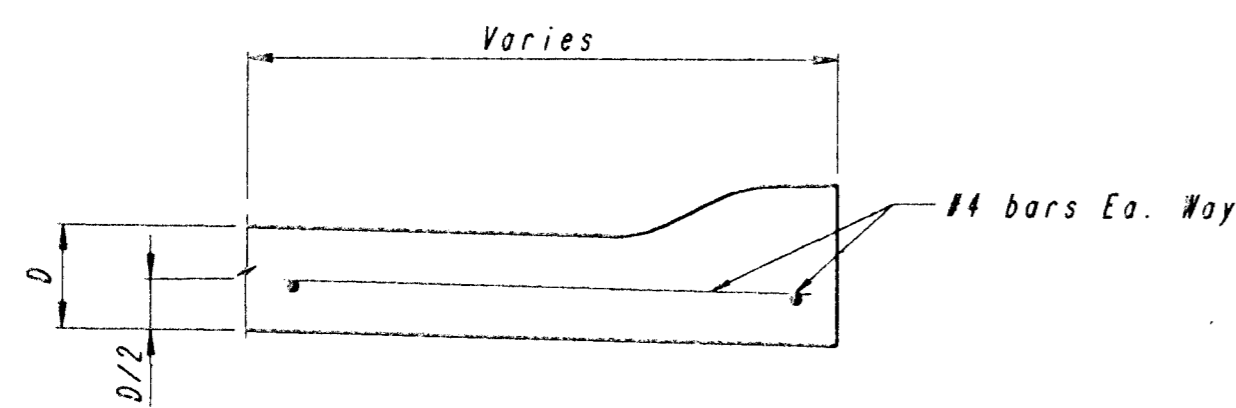
SECTION A-A

NOTE: OMIT REINFORCING MESH AT ALL JOINTS

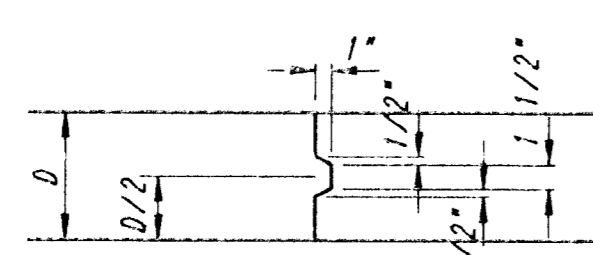
NOTE: ALL CONCRETE VALLEY GUTTER REINFORCEMENT SHALL BE ADEQUATELY SUPPORTED BY BAR CHAIRS IN THE REQUIRED POSITION UNLESS APPROVED OTHERWISE BY THE ENGINEER.



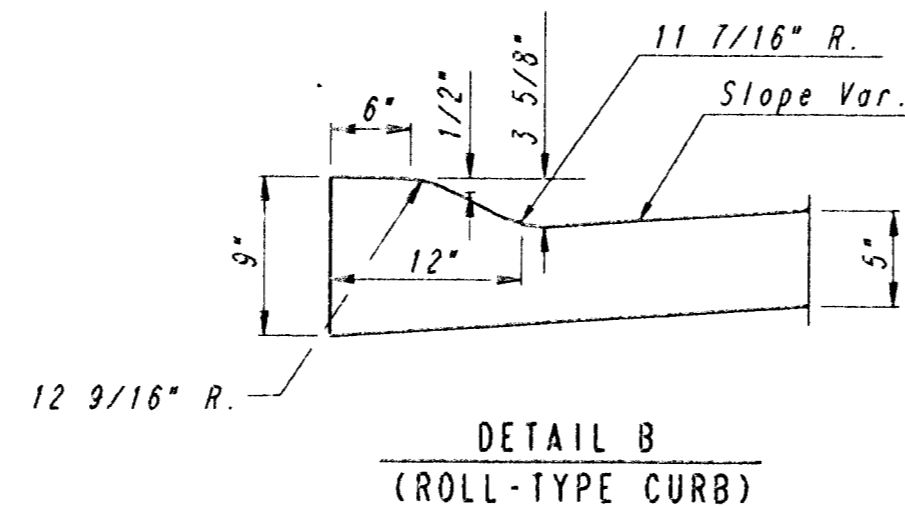
SECTION C-C



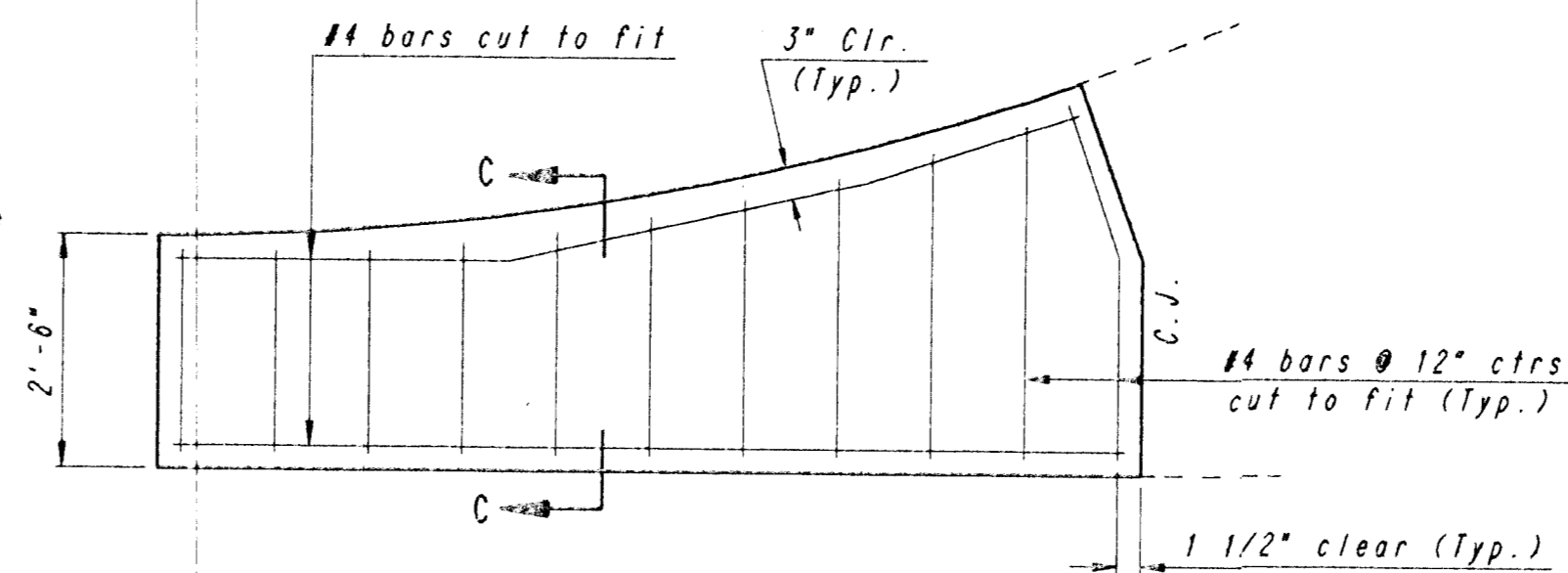
SECTION C-C



KEYWAY DETAIL

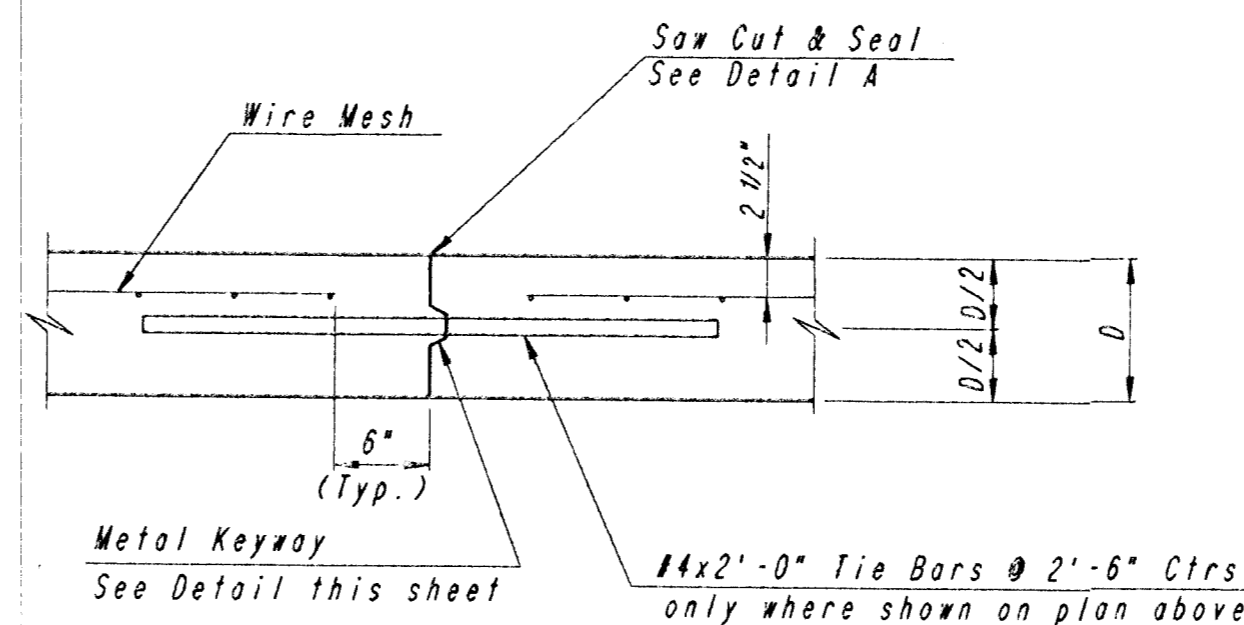


DETAIL B
(ROLL-TYPE CURB)

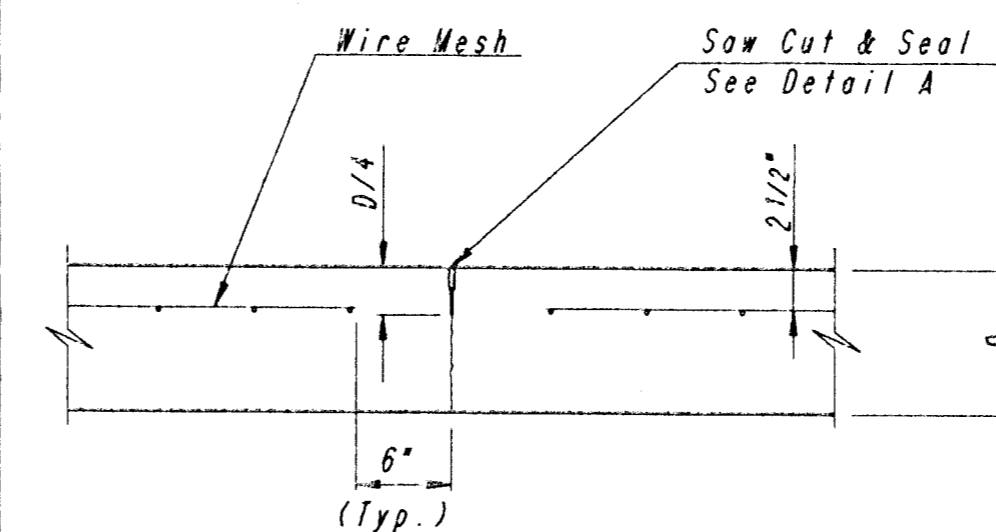


WING REINFORCING DETAIL

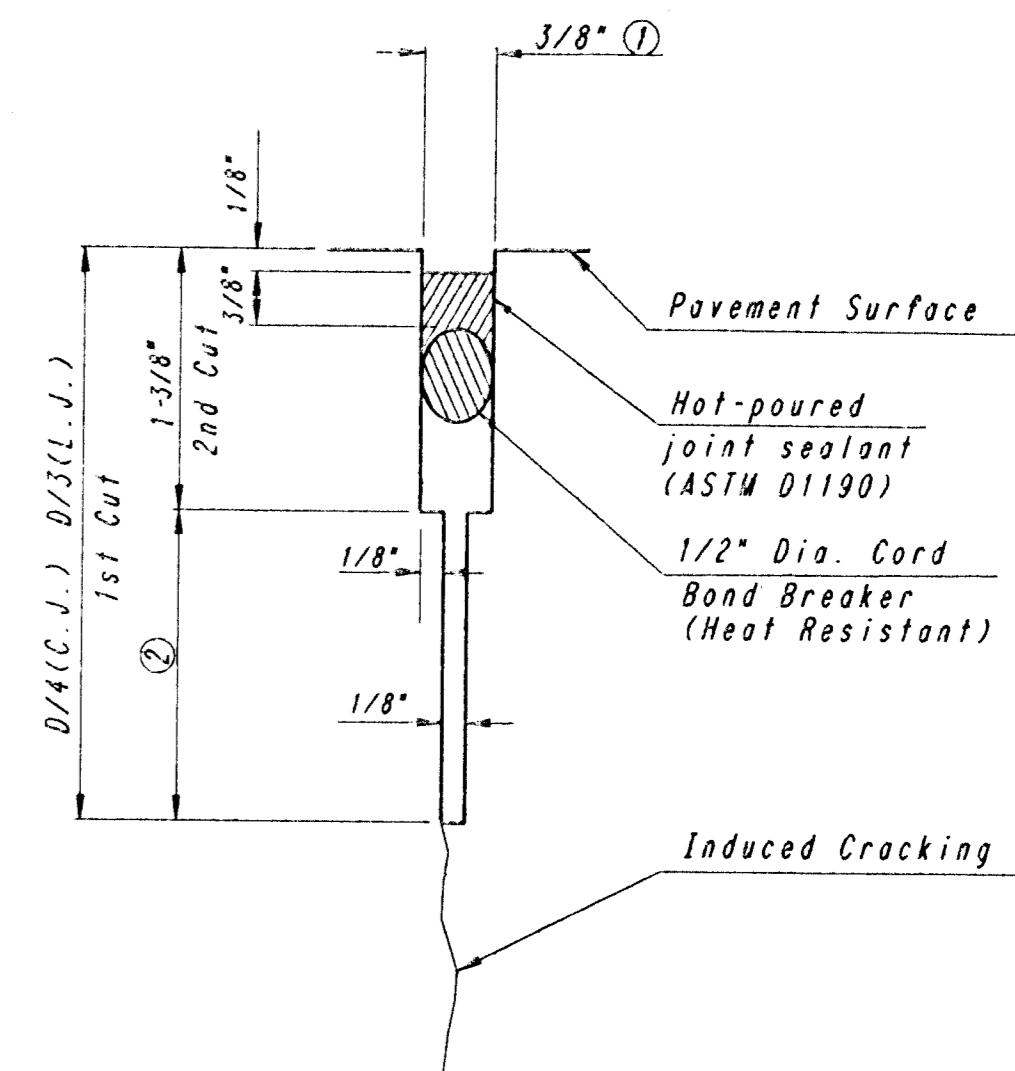
NOTE: OMIT WIRE FABRIC REINFORCING IN THIS SECTION.



LONGITUDINAL CONSTRUCTION JOINT DETAIL
REINFORCED PAVEMENT
(TRANSVERSE SECTION)
(ALTERNATE L.J.)

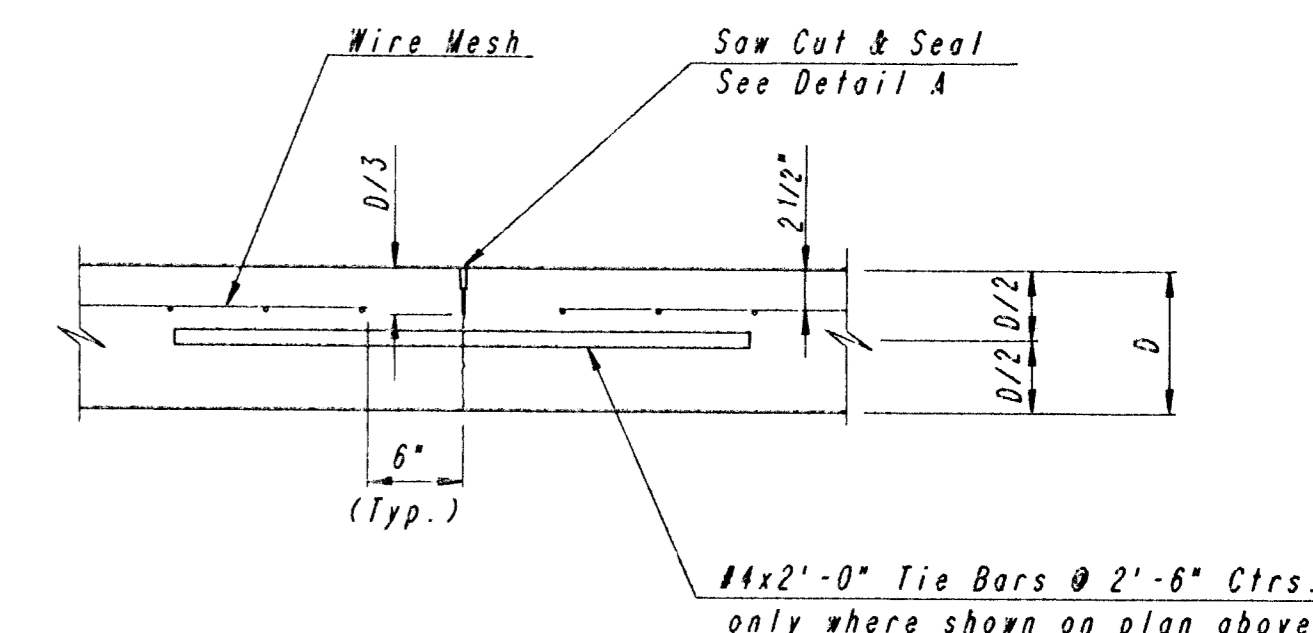


CONTRACTION JOINT DETAIL
REINFORCED PAVEMENT
(C.J.)

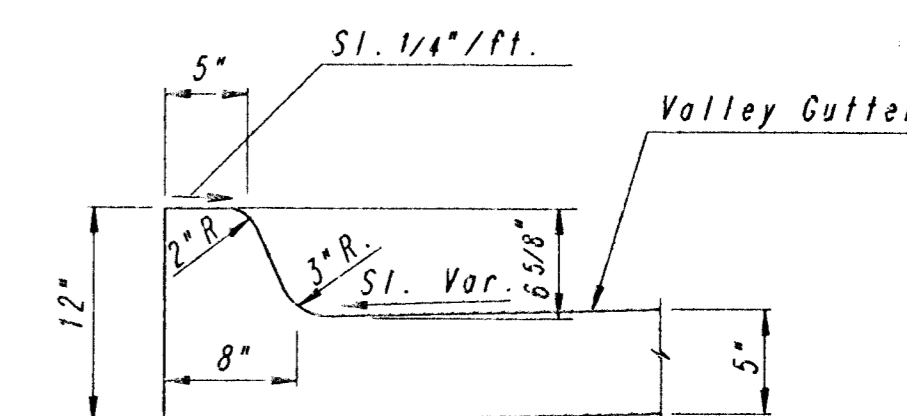


DETAIL A

- To be accomplished in 2 cuts for Longitudinal Joints & Contraction Joints. Initial cut to be 1/8" wide.
- Eliminate bottom of cut when metal keyway is used as part of Longitudinal or Transverse Construction Joint and at Doweled Construction Joint Locations.



LONGITUDINAL JOINT DETAIL
REINFORCED PAVEMENT
(TRANSVERSE SECTION)
(L.J.)

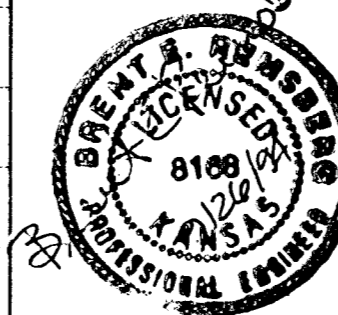


DETAIL B

DRAWING NAME: 38-52005 10 VAL CUT DTLS
LOCATION: 04 4783
DATE: 08/30/1984
DATE LAST WORKED ON: AUG. 30, 1984
BRENT REINBERG

PLAN	SURVEYED	BY	DATE
	NOTED		
	ALIGNED		
	CHECKED		
	NO.		
	RT. OF WAY		
	CHECKED		

REV.	DATE	DESCRIPTION



HELLMUTH, OBATA & KASSEBAUM, INC.
DALLAS, TEXAS

PROFESSIONAL ENGINEERING
CONSULTANTS, P.A.
WICHITA, KANSAS

BRAD J. GOLDBERG
DALLAS, TEXAS

MID-AMERICA
ALL-INDIAN CENTER
SITE IMPROVEMENTS
CITY OF WICHITA, KANSAS

PAVEMENT DETAILS

PROJECT NO.	ISSUE DATE	SCALE (No Scale)	SHEET P3
-------------	------------	---------------------	-------------