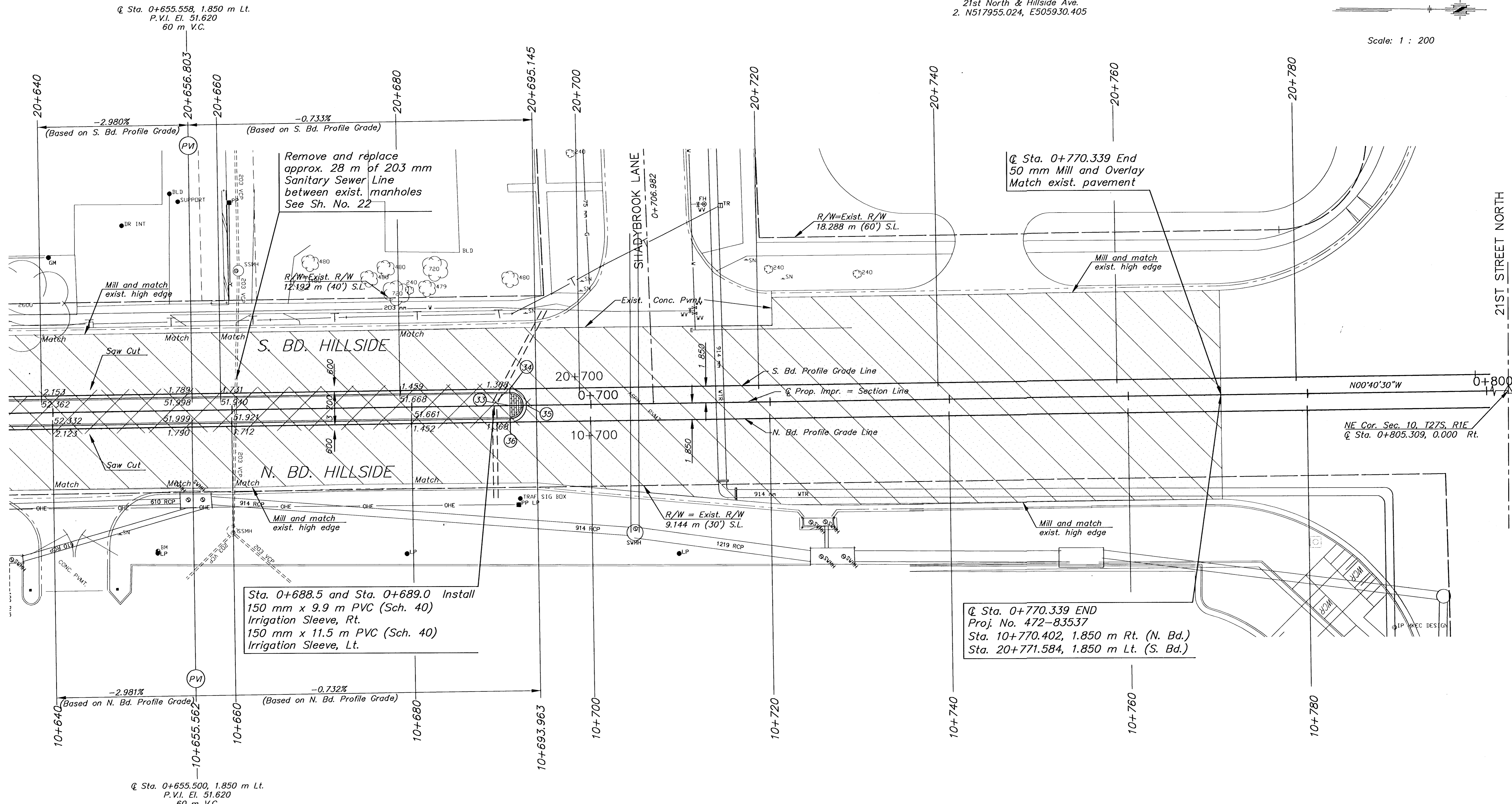


P.I. Sta. 0+805.309 = NE Cor. Sec. 10, T27S, R1E
 1. Fnd. 100 mm brass disc with punch mark in center at corner,
 21st North & Hillside Ave.
 2. N517955.024, E505930.405

Scale: 1 : 200



Q Sta. 0+655.558, 1.850 m Lt.
 P.V.I. El. 51.620
 60 m V.C.

Q Sta. 0+770.339 End
 50 mm Mill and Overlay
 Match exist. pavement

Remove and replace
 approx. 28 m of 203 mm
 Sanitary Sewer Line
 between exist. manholes
 See Sh. No. 22

R/W=Exist. R/W
 12.192 m (40') S.L.

R/W=Exist. R/W
 18.288 m (60') S.L.

Mill and match
 exist. high edge

Mill and match
 exist. high edge

Saw Cut

Saw Cut

Mill and match
 exist. high edge

Mill and match
 exist. high edge

Sta. 0+688.5 and Sta. 0+689.0 Install
 150 mm x 9.9 m PVC (Sch. 40)
 Irrigation Sleeve, Rt.
 150 mm x 11.5 m PVC (Sch. 40)
 Irrigation Sleeve, Lt.

Q Sta. 0+770.339 END
 Proj. No. 472-83537
 Sta. 10+770.402, 1.850 m Rt. (N. Bd.)
 Sta. 20+771.584, 1.850 m Lt. (S. Bd.)

Q Sta. 0+655.500, 1.850 m Lt.
 P.V.I. El. 51.620
 60 m V.C.

UTILITIES

- E - Weststar Energy (Electric) 261-6512
- G - Farmland Industries (Gas) 832-3101
- G - Kansas Gas Service (Gas) 832-3101
- G - Williams Pipeline (Gas) 529-6601
- SWS - City of Wichita Stormwater Utility 268-4071
- SS & W - City of Wichita Water Dept. 262-6000
- CATV - Cox Communications (Cable) 262-0661
- T - SBC (Telephone) 800-870-8390

BM #5 Chiseled square on W side of concrete
 L.P. Base
 Q Sta. 0+651.492, 15.650 m Rt. Elev.=52.955

- NE Cor. Sec. 10, T27S, R1E
 Sta. 0+805.309, 0.000 m Rt.
1. Fnd. 100 mm brass disc with punch mark in center at corner,
 21st North & Hillside Ave.
 2. Chiseled "X" on top of curb 20.208 m NE
 3. Chiseled "X" on top of curb 27.176 m SW
 4. Chiseled "X" on top of curb 19.516 m NW
 5. Chiseled "X" on top of curb on NW side of island 13.731 m SE
 6. City of Wichita benchmark disc in signal pole base 22.479 m NW
 7. N517955.024, E505930.405

LEGEND

- Pavement Removal
- 50 mm Mill
- 50 mm (min.) Overlay

Point No.	Station	Offset m	Elevation	
			High Edge	Top Curb
33	0+690.969	0.000 Lt.	Radius	Point
34	0+690.969	1.850 Lt.	51.368	51.577
35	0+693.419	0.000 Rt.	51.355	51.564
36	0+690.969	1.850 Rt.	51.368	51.577

H:\CIVIL\01053\PAVE\01053PL4.DWG 05/01/03 09:17:15 AM CDT

HILLSIDE STREET
 STA. 0+640 TO STA. 0+800

PROJ. NO. 472-83537 SEDGWICK CO.

MKEC ENGINEERING CONSULTANTS, INC.
 WICHITA, KANSAS

DESIGNED BY: JRA	CHECKED BY: JRA
DRAWN BY: DPG	DATE: Jan. 2003 SHEET 10 OF 73