

NOTES:

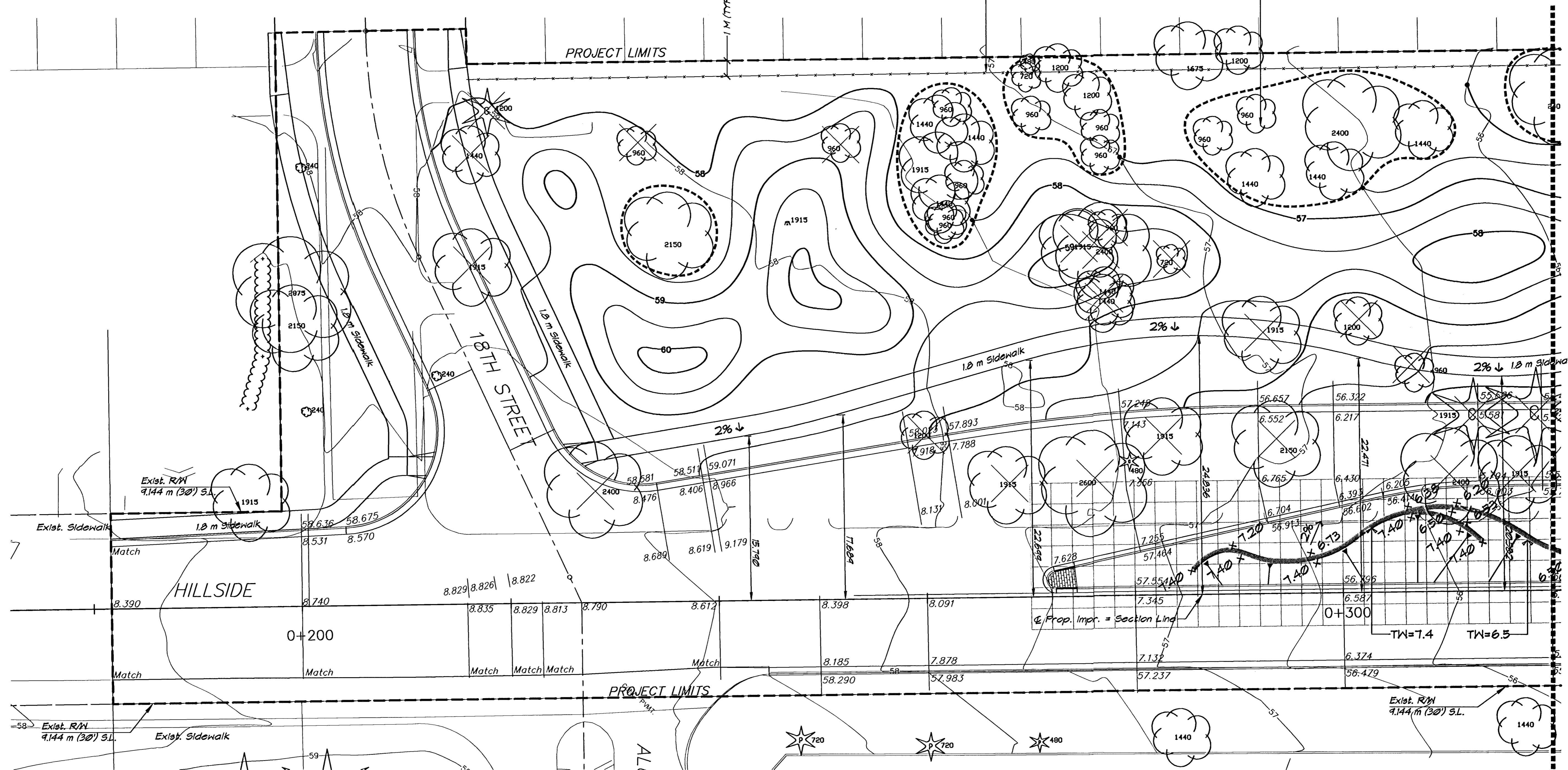
1. All embankment material to be placed in median to be Select Soil.
2. Contractor to resod all disturbed areas outside of designated sodding limits.
3. Top 150 mm of all embankments west of Hillside to be Select Soil.

INSTALL 1.8 M CHAINLINK FENCE (TYP
(REFER TO REQUIREMENTS SHEET 31)

EXIST. TREES TO BE PRESERVED
THINNING SHALL BE REQUIRED
& DETERMINED IN THE FIELD BY L.A. (TYP)
(COST SUBSIDIARY TO PROJECT)

Scale: 1 : 200

College Terrace Addition
Block 4



LEGEND

- 2 m Grid
- Sodding Limits
- 59.0 Proposed Grading Contour
- Tree to be removed
- Slope Arrow

H:\CIVIL\01053\PAVE\01053RS1.DWG 05/01/03 02:35:21 PM CDT

ROADSIDE IMPROVEMENTS
STA. 0+160 TO STA. 0+320

PROJ. NO. 472-83537 SEDGWICK CO.
MKEC ENGINEERING CONSULTANTS, INC.
WICHITA, KANSAS

DESIGNED BY: MKEC	CHECKED BY: MKEC
DRAWN BY: B.J.H.	DATE: 04/03 SHEET 29 OF 73