

NOTES:

1. All embankment material to be placed in median to be Select Soil.
2. Contractor to resod all disturbed areas outside of designated sodding limits.
3. Top 150 mm of all embankments west of Hillside to be Select Soil.

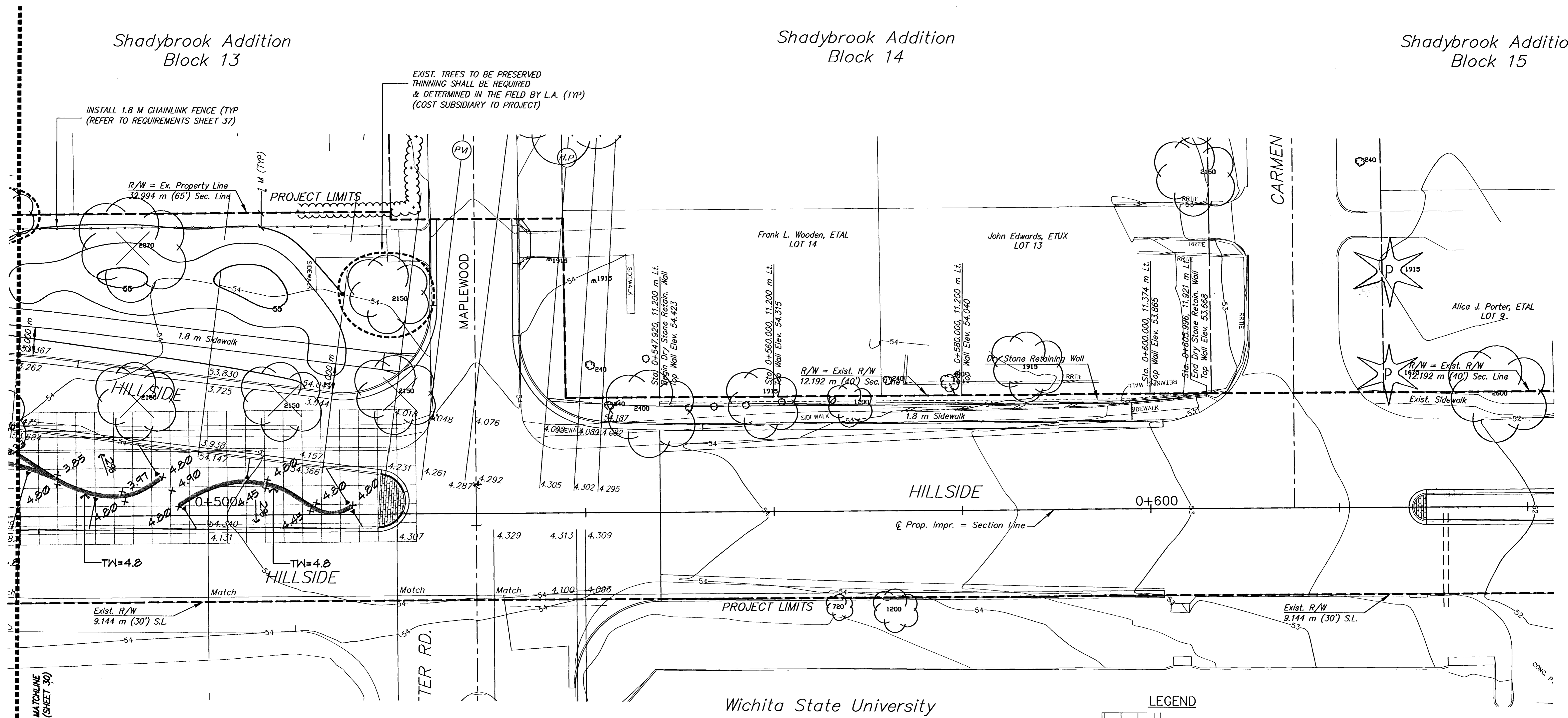


Scale: 1 : 200

Shadybrook Addition
Block 13

Shadybrook Addition
Block 14

Shadybrook Addition
Block 15



LEGEND

- 2 m Grid
- Sodding Limits
- 59.0 Proposed Grading Contour
- Tree to be removed
- Slope Arrow

H:\CIVIL\01053\PAVE\01053RS3.DWG 05/01/03 02:44:58 PM CDT

ROADSIDE IMPROVEMENTS	
STA. 0+480 TO STA. 0+640	
PROJ. NO. 472-83537	SEDGWICK CO.
MKEC ENGINEERING CONSULTANTS, INC. WICHITA, KANSAS	
DESIGNED BY: MKEC	CHECKED BY: MKEC
DRAWN BY: B.J.H.	DATE: 04/03 SHEET 31 OF 73