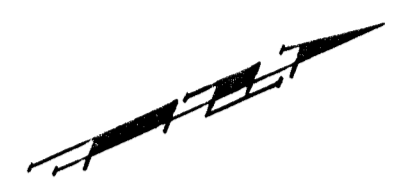
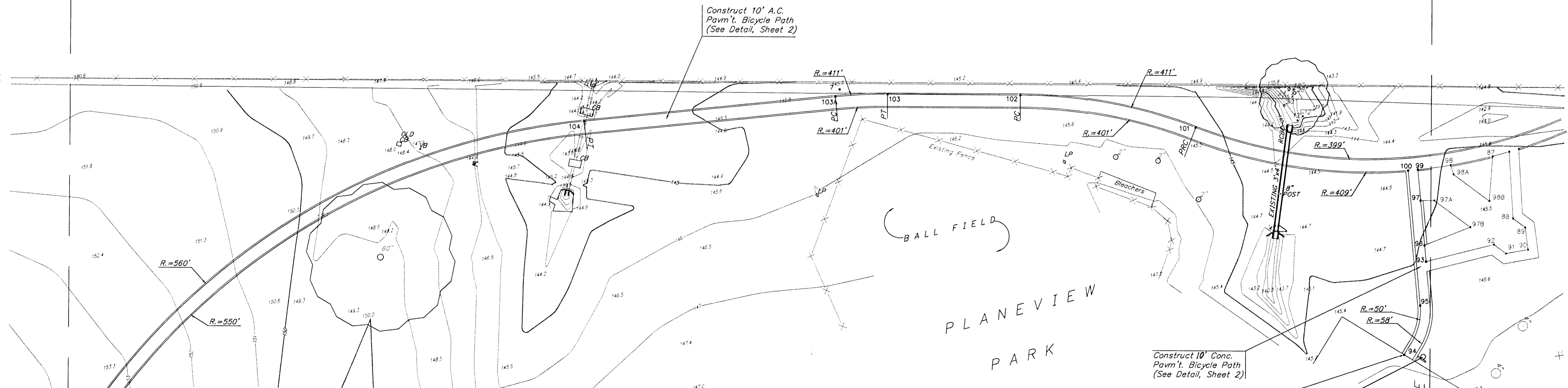


FHWA REGION NO.	STATE	PROJECT NO.	FISCAL YEAR	SHEET NO.	TOTAL SHEETS
7	KANSAS	87TE0074-01	1996	4	21



SCALE:
1" = 40'

KANSAS TURNPIKE AUTHORITY



Construct 10' A.C. Pavm't. Bicycle Path (See Detail, Sheet 2)

Construct 10' Conc. Pavm't. Bicycle Path (See Detail, Sheet 2)

Match Existing Grade at Parking Lot
Install R5-3 Sign

MATCH LINE

MATCH LINE

PT	NORTHING	EASTING	DESCRIPTION	PT	NORTHING	EASTING	DESCRIPTION	PT	NORTHING	EASTING	DESCRIPTION	PT	NORTHING	EASTING	DESCRIPTION
1	20000.000	20000.000	P IN	30	24844.591	21370.032		63	22552.780	19945.670		95	21286.439	19293.674	
2	22645.220	20000.000	P IN	31	24812.907	21373.504		64	22552.529	19939.634		96	21310.084	19250.014	
3	22281.620	20039.050	P IN	32	24811.436	21371.017		65	22521.039	19871.930		97	21322.187	19215.189	
4	20726.780	20038.370	P IN	33	24812.854	21365.949		66	22439.829	19791.555		97A	21332.50	19219.80	
5	19946.090	19498.790	P IN	34	24809.963	21359.987		67	22321.790	19688.050		97B	21350.51	19251.87	
6	19939.600	18817.820	P IN	35	24796.647	21350.377		68	22253.418	19634.370		98	21356.654	19198.936	
7	20923.036	18934.721	P IN	36	24792.859	21341.962		68A	22167.480	19571.780		98A	21355.74	19206.81	
8	19112.528	18124.410	P IN	37	24804.205	21333.279		69	21844.797	19559.746		98B	21373.75	19238.78	
9	17938.405	17585.344	P IN	38	24802.685	21345.129		70	21840.590	19572.167		99	21330.557	19191.108	
10	21768.201	19483.574	P IN	39	24839.633	21349.866		71	21822.655	19621.077		100	21323.001	19188.481	
11	23118.313	19335.741	P IN	40	24841.152	21338.016		72	21826.970	19615.869		101	21177.738	19084.438	
12	23591.543	20435.150	P IN	41	24855.115	21341.613		73	21835.404	19582.573		102	21057.034	19000.164	
13	24011.240	20802.370	P IN	42	24819.153	21318.395		74	21819.581	19576.528		103	20957.462	18954.565	
14	24630.260	21400.500	P IN	43	24787.262	21319.122		75	21764.674	19616.084		103A	20917.35	18938.69	
15	24956.248	21457.476	P IN	44	24725.023	21318.829		76	21718.514	19673.965		104	20720.143	18872.381	
16	25404.874	22106.417	P IN	45	24716.860	21320.344		77	21665.939	19682.881		105	20703.210	18894.934	
17	25449.092	22643.455	P IN	46	24699.593	21319.902		78	21647.960	19670.550		106	20097.473	18993.374	
18	25684.525	22475.506	P IN	47	24640.567	21325.174		79	21645.302	19656.775		107	20084.800	18976.248	
19	25658.162	22480.356	P IN	48	24551.714	21299.982		80	21677.135	19577.572		108	20091.225	19925.800	
20	25625.068	22368.081	P IN	49	24143.989	20915.343		81	21706.964	19400.269		109	20071.257	19906.063	
21	25615.092	22368.775	P IN	50	23906.834	20691.617		82	21632.963	19259.725		110	20070.984	19883.733	
22	25612.36	22165.80	P IN	51	23560.595	20365.843		83	21563.612	19227.514		111	20066.304	19793.798	
23	25528.94	22008.74	P IN	52	23254.815	20076.423		84	21454.385	19202.427		112	20042.026	19706.283	
23B	25451.23	21946.57	P IN	53	23247.941	20083.686		85	21413.487	19209.708		113	20036.222	19723.020	
24	25405.42	21921.41	P IN	54	23179.132	20046.870		86	21405.316	19208.668		114	20035.956	19723.020	
25	25285.180	21865.143	P IN	55	23179.265	20056.869		87	21391.331	19206.497		115	20033.127	19041.940	
26	25060.060	21689.713	P IN	56	23111.576	20050.310		88	21385.632	19259.877		116	20023.128	19042.074	
27	24947.764	21532.015	P IN	57	23099.242	20044.298		89	21391.733	19270.705		117	20041.189	18998.619	
28	24893.273	21433.718	P IN	58	23068.530	20049.614		90	21366.362	19288.337		118	20032.699	18995.090	
29	24858.154	21375.212	SECCOR	59	22852.46	19949.76		91	21368.500	19283.795		119	20041.429	18951.950	
				60	22572.592	19949.111		92	21362.399	19272.967		120	20032.333	18954.848	
				61	22571.572	19957.109		93	21305.647	19262.776		121	20031.080	18890.595	
				62	22552.759	19955.065		94	21257.756	19325.178		122			

BENCHMARKS:
City of Wichita Bench Mark Disk in traffic signal base, north side 31st Street South & west line Turnpike Drive. Elev. = 165.59
City of Wichita Bench Mark Disk in traffic signal base, SE intersection, Oliver Street and 31st Street South. Elev. = 164.48
City of Wichita Bench Mark Disk in sidewalk at NE corner of bridge approx. 300'± west of KTA & 395'± east of centerline McAdam. Elev. = 123.02

GYPSON CREEK BICYCLE PATH PAVEMENT PLAN
BOEING TO CESSNA PARK

BAUGHMAN COMPANY P.A.
ENGINEERING, SURVEYING, & PLANNING
316-262-7271 • 315 ELLIS • WICHITA, KANSAS 67211

PROJECT NUMBER
472-76-245-82654-000-000-001

SHEET **4** OF **21**

DESIGN BAM	DRAIN BAM	APPROVED TA	DATE 8/96	SCALE 1"=40'
------------	-----------	-------------	-----------	--------------

95-10-E148