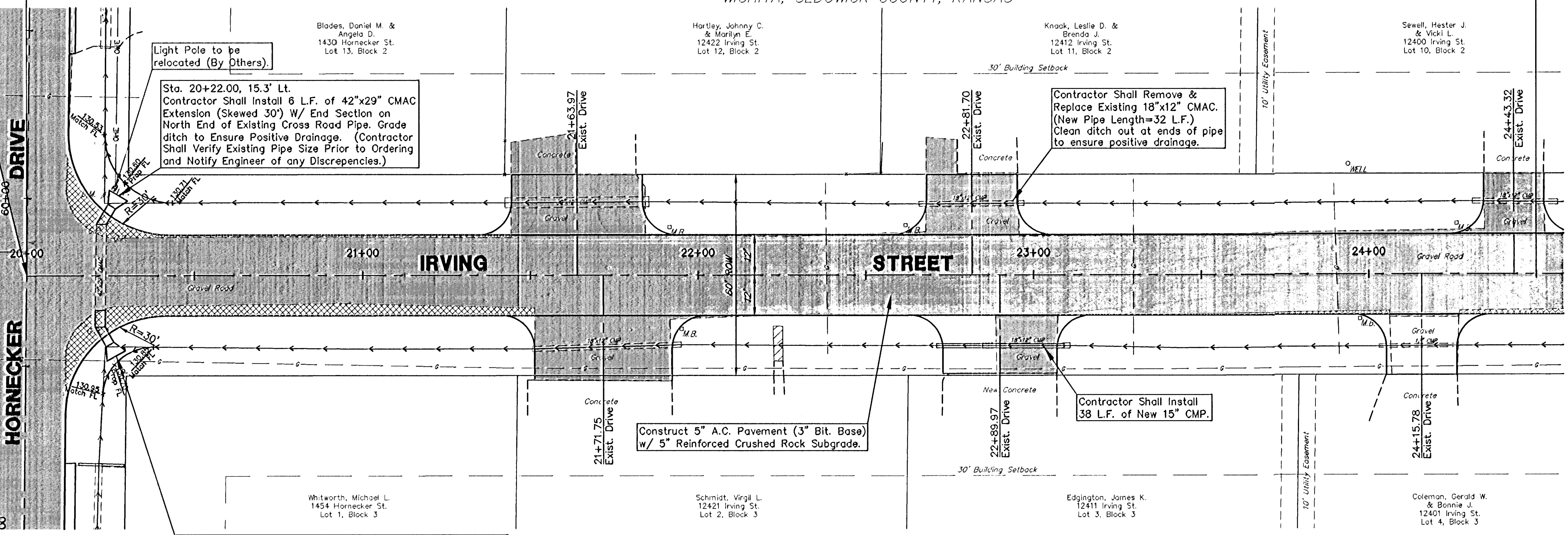
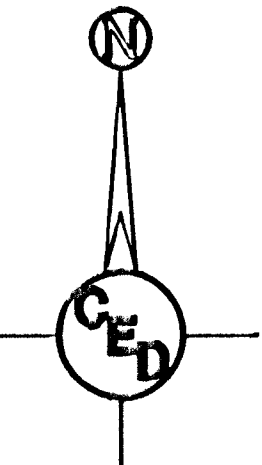
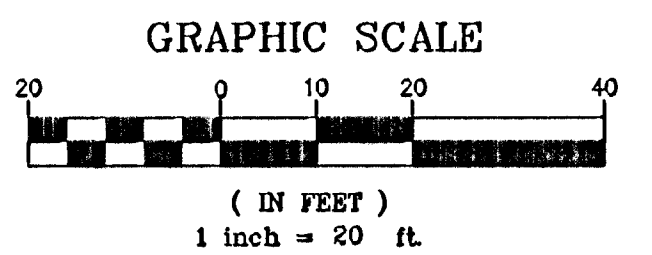


Irving St. Sta. 20+00.00 =  
Hornecker Drive, Sta. 59+76.95  
Begin Construction  
N 21014.49  
E 18254.23

C. PATE ADDITION TO WHEATRIDGE  
WICHITA, SEDGWICK COUNTY, KANSAS

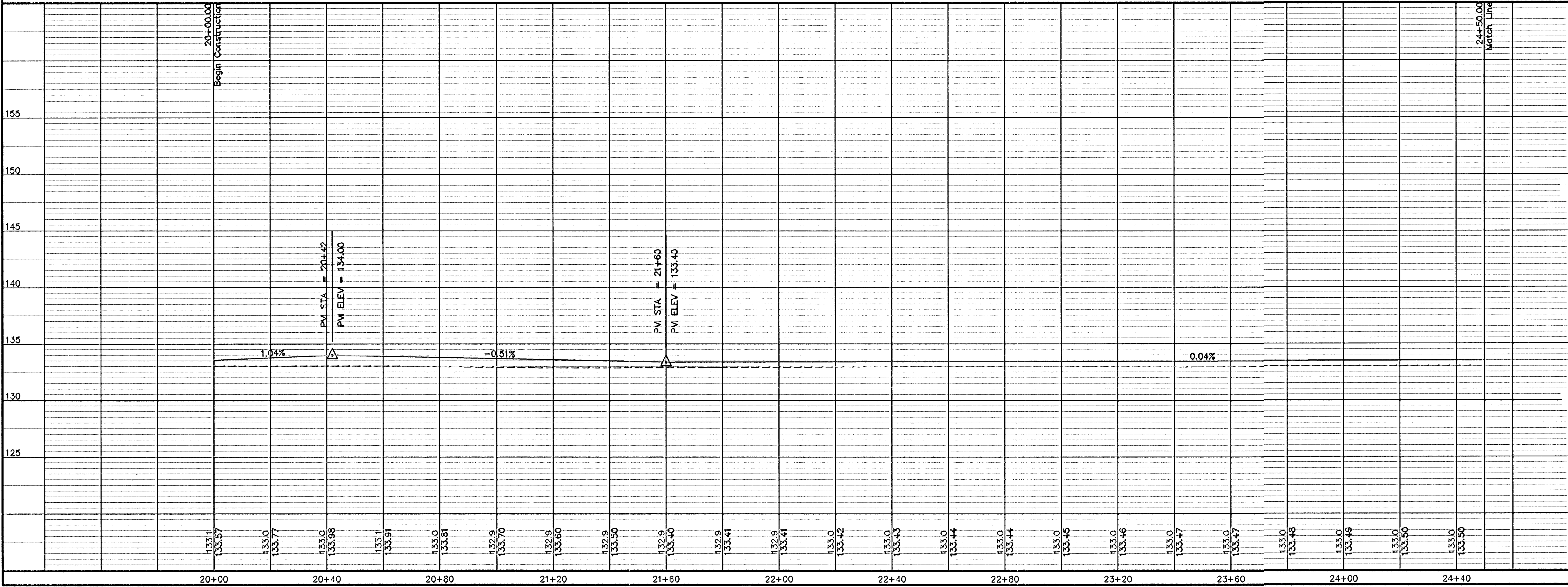
- = Existing Gravel Surface
- = Proposed Roadbed Widening (See Typical Section, Sheet No. 3)
- = Existing Ditch Flow Line
- = Proposed Ditch Flow Line



- LEGEND**
- G = GAS MAIN
  - W = WATER MAIN
  - SS = SANITARY SEWER
  - SMS = STORM WATER SEWER
  - USE = UNDER GROUND ELECTRIC
  - GT = UNDER GROUND TELEPHONE
  - B.M. = BENCH MARK
  - TELE PED = TELEPHONE PEDESTAL
  - F.H. = FIRE HYDRANT
  - G.A. = GUY ANCHOR
  - G.P. = GUARD POST
  - H.L.P. = HIGH LINE POLE
  - L.P. = LIGHT POLE
  - M.B. = MAIL BOX
  - P.P. = POWER POLE
  - SH = SPRINKLER HEAD
  - SIGN = SIGN
  - WELL = WATER WELL
  - W.V. = WATER VALVE
  - SS M.H. = SANITARY SEWER MANHOLE

UTILITIES SHOWN REPRESENT THE BEST INFORMATION AVAILABLE FOR DESIGN. ADDITIONAL UTILITIES MAY BE PRESENT ON THIS PROJECT. THE CONTRACTOR SHALL BE RESPONSIBLE FOR DETERMINING THE EXACT LOCATION, DEPTH AND SIZE OF ALL UNDERGROUND UTILITIES PRIOR TO CONSTRUCTION. THE CONTRACTOR SHALL BE LIABLE FOR ANY DAMAGE CAUSED BY THE FAILURE TO DO SO.

**SURVEY DISCLAIMER:**  
TOPOGRAPHIC SURVEY AND CONTOUR MAP USED IN PREPARING PLANS WAS PROVIDED BY SAVOY COMPANY, P.A., 535 S. EMPORIA, SUITE 104, WICHITA, KS. ENGINEER DOES NOT GUARANTEE SURVEY ELEVATIONS FOR ACCURACY. CONTRACTOR SHALL VERIFY ELEVATIONS AND NOTIFY ENGINEER OF ANY DISCREPANCIES.



PAVING PLANS FOR  
**IRVING STREET**  
WICHITA, SEDGWICK COUNTY, KANSAS  
CED PROJ NO.: 20030988  
**CERTIFIED ENGINEERING DESIGN, P.A.**  
810 WEST DOUGLAS, SUITE C  
WICHITA, KANSAS 67203  
PH.(316)262-8808 FAX.(316)262-1669

DESIGNED: HDF	SCALE: 1"=20'	SHEET
DRAWN: CKW	DATE: 8/03	8
CHECKED: HDF	CED FILE: Wheat-Base.dwg	TOTAL 43