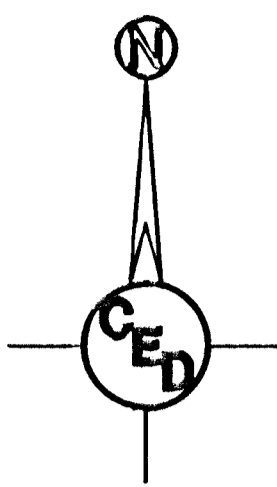
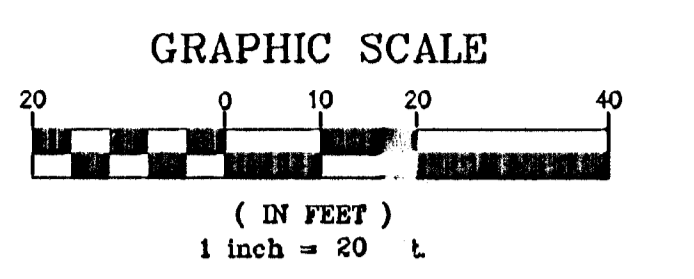


- = Existing Gravel Surface
- = Proposed Roadbed Widening (See Typical Section, Sheet No. 3)
- = Existing Ditch Flow Line
- = Proposed Ditch Flow Line



- LEGEND**
- G = GAS MAIN
 - W = WATER MAIN
 - SS = SANITARY SEWER
 - SSS = STORM WATER SEWER
 - UGE = UNDER GROUND ELECTRIC
 - UGT = UNDER GROUND TELEPHONE
- B.M. = BENCH MARK
 - TELE. PED. = TELEPHONE PEDESTAL
 - F.H. = FIRE HYDRANT
 - C. = CUY ANCHOR
 - G.P. = GUARD POST
 - H.L.P. = HIGH LINE POLE
 - L.P. = LIGHT POLE
 - M.B. = MAIL BOX
 - P.P. = POWER POLE
 - SH = SPRINKLER HEAD
 - S. = SIGN
 - WELL. = WATER WELL
 - W.V. = WATER VALVE
 - SS M.H. = SANITARY SEWER MANHOLE

UTILITIES SHOWN REPRESENT THE BEST INFORMATION AVAILABLE FOR DESIGN. ADDITIONAL UTILITIES MAY BE PRESENT ON THIS PROJECT. THE CONTRACTOR SHALL BE RESPONSIBLE FOR DETERMINING THE EXACT LOCATION, DEPTH AND SIZE OF ALL UNDERGROUND UTILITIES PRIOR TO CONSTRUCTION. THE CONTRACTOR SHALL BE LIABLE FOR ANY DAMAGE CAUSED BY THE FAILURE TO DO SO.

SURVEY DISCLAIMER:
 TOPOGRAPHIC SURVEY AND CONTOUR MAP USED IN PREPARING PLANS WAS PROVIDED BY SAVOY COMPANY, P.A., 535 S. EMPORIA, SUITE 104, WICHITA, KS. ENGINEER DOES NOT GUARANTEE SURVEY ELEVATIONS FOR ACCURACY. CONTRACTOR SHALL VERIFY ELEVATIONS AND NOTIFY ENGINEER OF ANY DISCREPANCIES.

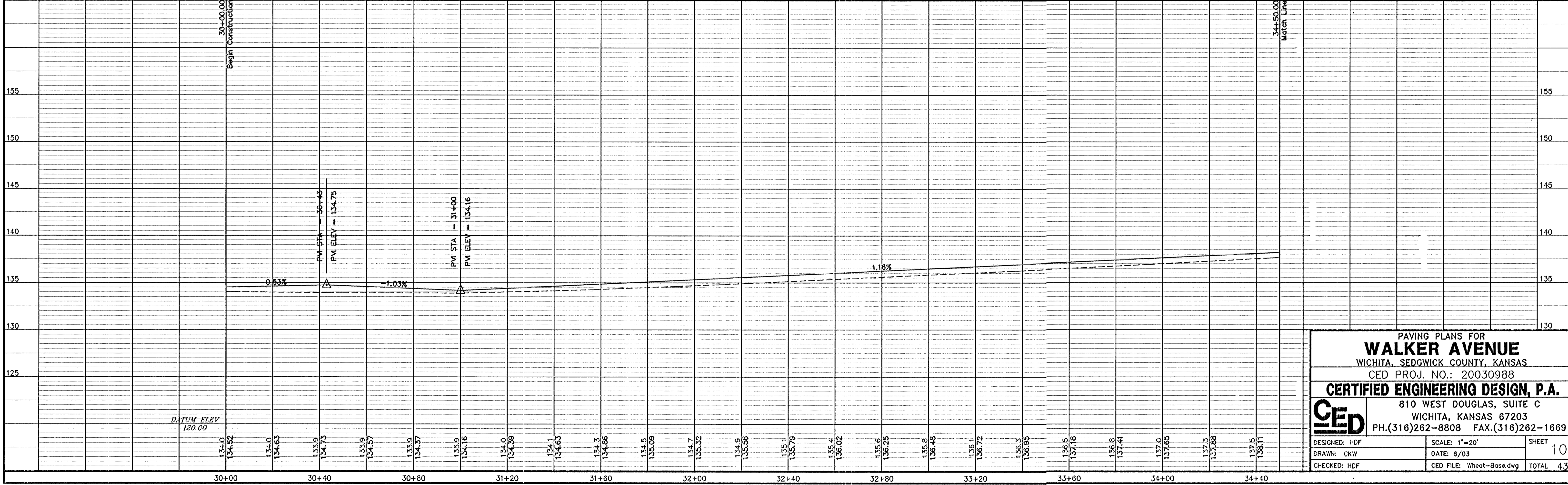
PC=Beginning of Curve
 PT=Curve/Tangent Intersect
 PRC=Reverse Curve/Curve Intersect
 PCC=Compound Curve/Curve Intersect

Sta. 30+23.00, 21.40' Lt.
 Contractor Shall Install 3 L.F. of 24" CMP Extension (Skewed 30') W/ End Section on North End of Existing Cross Road Pipe. Grade ditch to Ensure Positive Drainage. (Contractor Shall Verify Existing Pipe Size Prior to Ordering and Notify Engineer of any Discrepancies.)

Light Pole to be relocated (By Others).

Sta. 30+23.00, 19.15' Rt.
 Contractor Shall Install 3 L.F. of 24" CMP Extension (Skewed 30') W/ End Section on South End of Existing Cross Road Pipe. Grade ditch to Ensure Positive Drainage. (Contractor Shall Verify Existing Pipe Size Prior to Ordering and Notify Engineer of any Discrepancies.)

Construct 5" A.C. Pavement (3" Bit. Base) w/ 5" Reinforced Crushed Rock Subgrade.



PAVING PLANS FOR
WALKER AVENUE
 WICHITA, SEDGWICK COUNTY, KANSAS
 CED PROJ. NO.: 20030988
CERTIFIED ENGINEERING DESIGN, P.A.
 810 WEST DOUGLAS, SUITE C
 WICHITA, KANSAS 67203
 PH.(316)262-8808 FAX.(316)262-1669

DESIGNED: HDF
 DRAWN: CKW
 CHECKED: HDF

SCALE: 1"=20'
 DATE: 6/03
 CED FILE: Wheat-Bose.dwg

SHEET
 10
 TOTAL 43