

BENCHMARKS:

BM #1: "□" with cross on curb inlet near the SE corner of Lot 8, Block 4, Cheryl's Hollow 2nd Addition.
Elev. = 1364.97 (NAVD 88).

BM #2: "□" with cross on curb inlet near the SE corner of Lot 9, Block 10, Cheryl's Hollow 2nd Addition.
Elev. = 1363.50 (NAVD 88).

Baseline = CL Kap

This sheet is all in Phase 3.

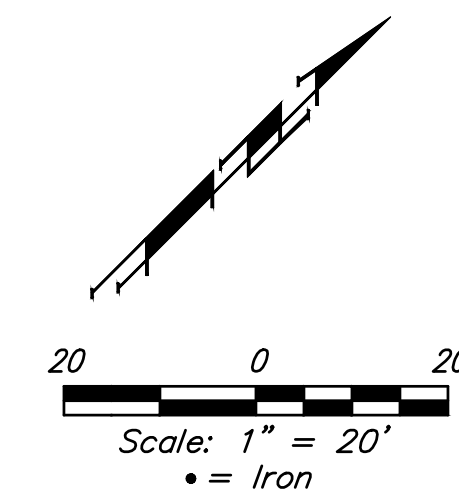
Subdivision Bench Marks

Street & Station	Location Description	Elevation
Kap 7+64.47, 17.25' Lt.	Adjacent to Fire Hydrant at W. End of SW Curb Return of Kap & Kap Ct.	

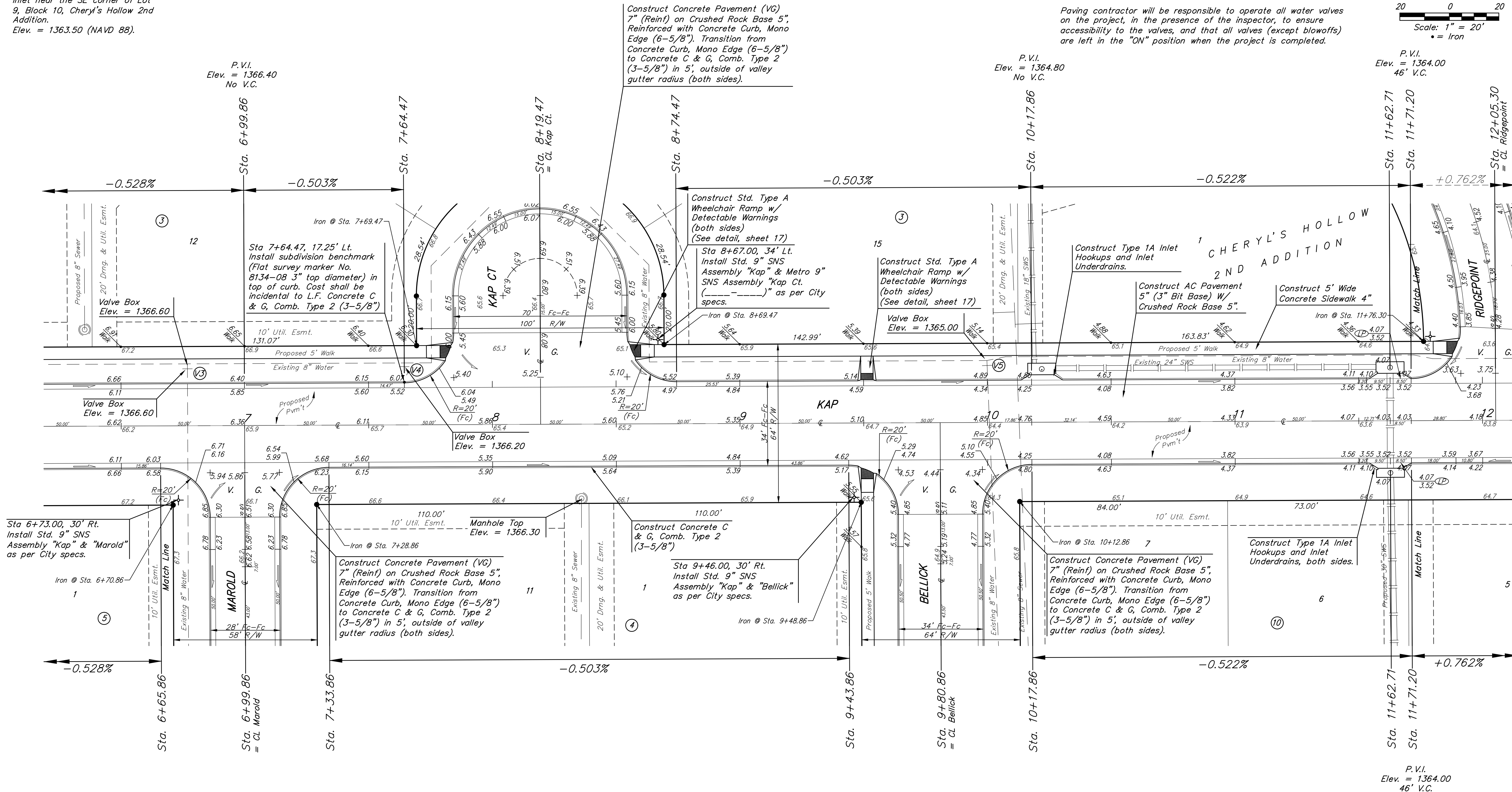
WATER VALVE LOCATION TABLE

VALVE NUMBER	STREET	BASELINE STATION	OFFSET DISTANCE	OFFSET DIRECTION
V3	Kap	6+76.86	25'	Lt.
V4	Kap	7+64.47	25'	Lt.
V5	Kap	9+99.86	25'	Lt.

Paving contractor will be responsible to operate all water valves on the project, in the presence of the inspector, to ensure accessibility to the valves, and that all valves (except blowoffs) are left in the "ON" position when the project is completed.



P.V.I.
Elev. = 1364.00
46' V.C.



NOTE: ROLL TYPE CURB & GUTTER (TYPE 2) TO BE CONSTRUCTED ON THE PAVEMENT SHOWN ON THIS SHEET. TOP OF CURB ELEVATIONS ARE GIVEN FOR FULL HEIGHT CURB (TYPE 4).

CHERYL'S HOLLOW 2ND ADD. Ph. 3&4
KAP
 STREET IMPROVEMENTS
 Baughman Company, P.A.
 ENGINEERING, PLANNING, LANDSCAPE ARCHITECTURE
 1515 W. WILSON ST. #111, FORT WORTH, TX 76102
 (817) 342-2000
 www.baughman.com
 Date: 08/20/20