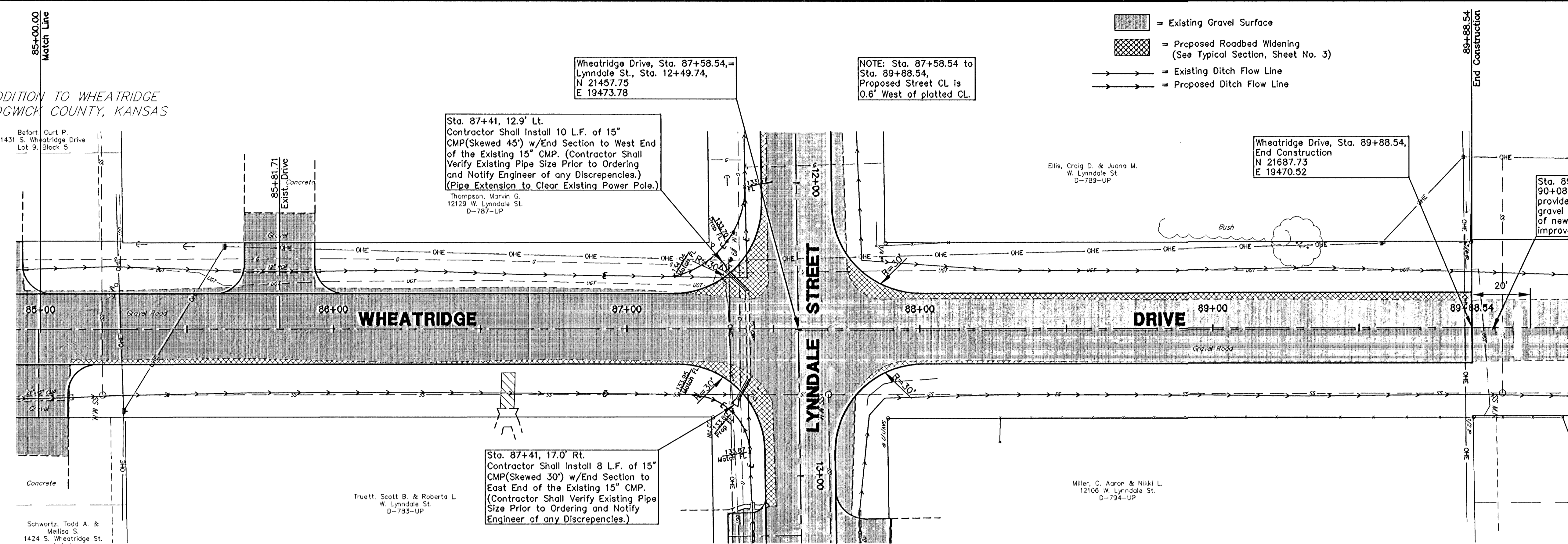


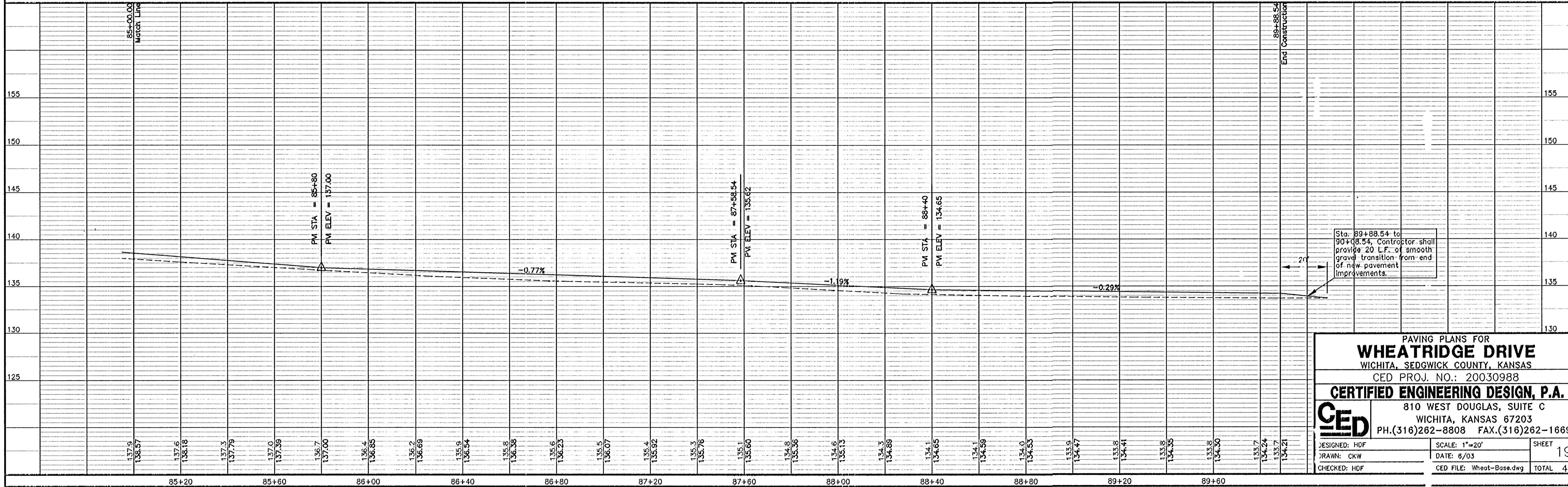
C. PATE ADDITION TO WHEATRIDGE DRIVE, WICHITA, SEDGWICK COUNTY, KANSAS

BLED SOE ADDITION WICHITA, SEDGWICK COUNTY, KANSAS



UTILITIES SHOWN REPRESENT THE BEST INFORMATION AVAILABLE FOR DESIGN. ADDITIONAL UTILITIES MAY BE PRESENT ON THIS PROJECT. THE CONTRACTOR SHALL BE RESPONSIBLE FOR DETERMINING THE EXACT LOCATION, DEPTH AND SIZE OF ALL UNDERGROUND UTILITIES PRIOR TO CONSTRUCTION. THE CONTRACTOR SHALL BE LIABLE FOR ANY DAMAGE CAUSED BY THE FAILURE TO DO SO.

SURVEY DISCLAIMER:
 TOPOGRAPHIC SURVEY AND CONTOUR MAP USED IN PREPARING PLANS WAS PROVIDED BY SAVOY COMPANY, P.A., 535 S. EMPORIA, SUITE 104, WICHITA, KS. ENGINEER DOES NOT GUARANTEE SURVEY ELEVATIONS FOR ACCURACY. CONTRACTOR SHALL VERIFY ELEVATIONS AND NOTIFY ENGINEER OF ANY DISCREPANCIES.



PAVING PLANS FOR
WHEATRIDGE DRIVE
 WICHITA, SEDGWICK COUNTY, KANSAS
 CED PROJ. NO.: 20030988

CERTIFIED ENGINEERING DESIGN, P.A.
 810 WEST DOUGLAS, SUITE C
 WICHITA, KANSAS 67203
 PH. (316)262-8808 FAX. (316)262-1669

DESIGNED: HDF
 DRAWN: CKW
 CHECKED: HDF

SCALE: 1"=20'
 DATE: 6/03
 CED FILE: Wheat-Bose.dwg

SHEET
 19
 TOTAL 43