

BENCHMARKS:

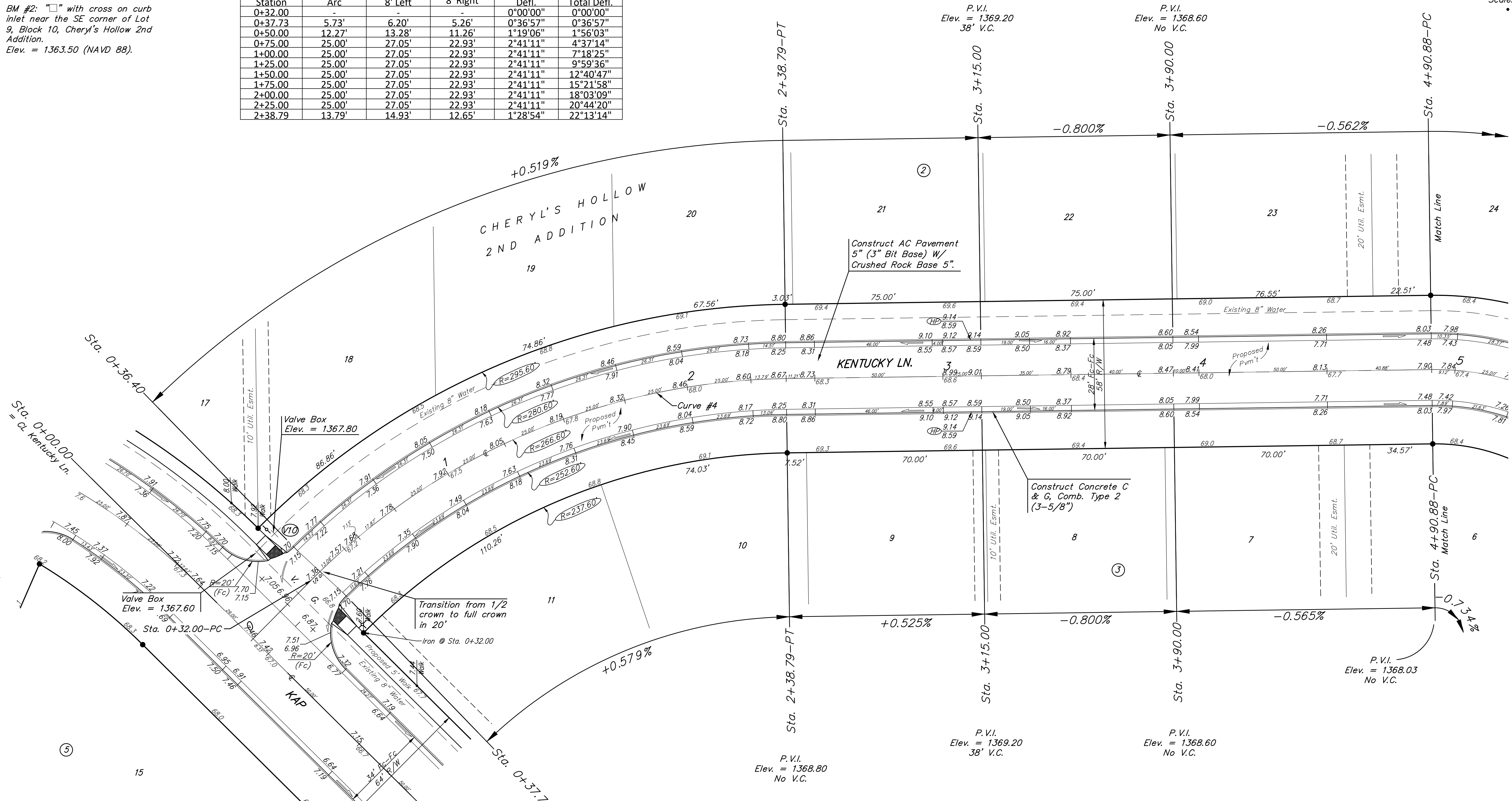
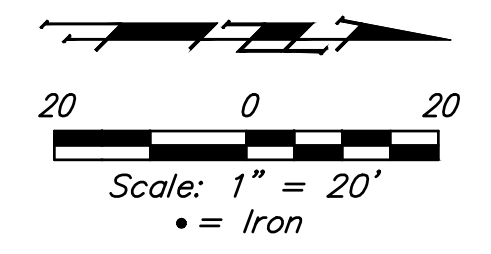
BM #1: "□" with cross on curb inlet near the SE corner of Lot 8, Block 4, Cheryl's Hollow 2nd Addition.
Elev. = 1364.97 (NAVD 88).

BM #2: "□" with cross on curb inlet near the SE corner of Lot 9, Block 10, Cheryl's Hollow 2nd Addition.
Elev. = 1363.50 (NAVD 88).

Curve #4					
Curve Data Based on Centerline					
Rad. = 266.6' Delta = 44°26'29" Tangent = 108.91'					
Arc = 206.79' L.C. = 201.64' Def./Ft. = 6.44732 Min.					
Face Chord Lengths					
Station	Arc	8' Left	8' Right	Defl.	Total Defl.
0+32.00	-	-	-	0°00'00"	0°00'00"
0+37.73	5.73'	6.20'	5.26'	0°36'57"	0°36'57"
0+50.00	12.27'	13.28'	11.26'	1°19'06"	1°56'03"
0+75.00	25.00'	27.05'	22.93'	2°41'11"	4°37'14"
1+00.00	25.00'	27.05'	22.93'	2°41'11"	7°18'25"
1+25.00	25.00'	27.05'	22.93'	2°41'11"	9°59'36"
1+50.00	25.00'	27.05'	22.93'	2°41'11"	12°40'47"
1+75.00	25.00'	27.05'	22.93'	2°41'11"	15°21'58"
2+00.00	25.00'	27.05'	22.93'	2°41'11"	18°03'09"
2+25.00	25.00'	27.05'	22.93'	2°41'11"	20°44'20"
2+38.79	13.79'	14.93'	12.65'	1°28'54"	22°13'14"

Baseline = CL Kentucky Ln.

This sheet is all in Phase 4.



WATER VALVE LOCATION TABLE

VALVE NUMBER	STREET	BASELINE STATION	OFFSET DISTANCE	OFFSET DIRECTION
V10	Kap	0+34.76	23'	Lt.

Paving contractor will be responsible to operate all water valves on the project, in the presence of the inspector, to ensure accessibility to the valves, and that all valves (except blowoffs) are left in the "ON" position when the project is completed.

NOTE: ROLL TYPE CURB & GUTTER (TYPE 2) TO BE CONSTRUCTED ON THE PAVEMENT SHOWN ON THIS SHEET. TOP OF CURB ELEVATIONS ARE GIVEN FOR FULL HEIGHT CURB (TYPE 4).

CHERYL'S HOLLOW 2ND ADD. Ph. 3&4
KENTUCKY LN.
 STREET IMPROVEMENTS
 BAUGHMAN COMPANY, P.A.
 ENGINEERING, PLANNING & LANDSCAPE ARCHITECTURE
 1515 W. WILSON ST. #211, FORT WORTH, TX 76102
 (817) 342-1111
 www.baughman.com
 Date: 05/20/20