

BENCHMARKS:

BM #1: "□" with cross on curb inlet near the SE corner of Lot 8, Block 4, Cheryl's Hollow 2nd Addition.
Elev. = 1364.97 (NAVD 88).

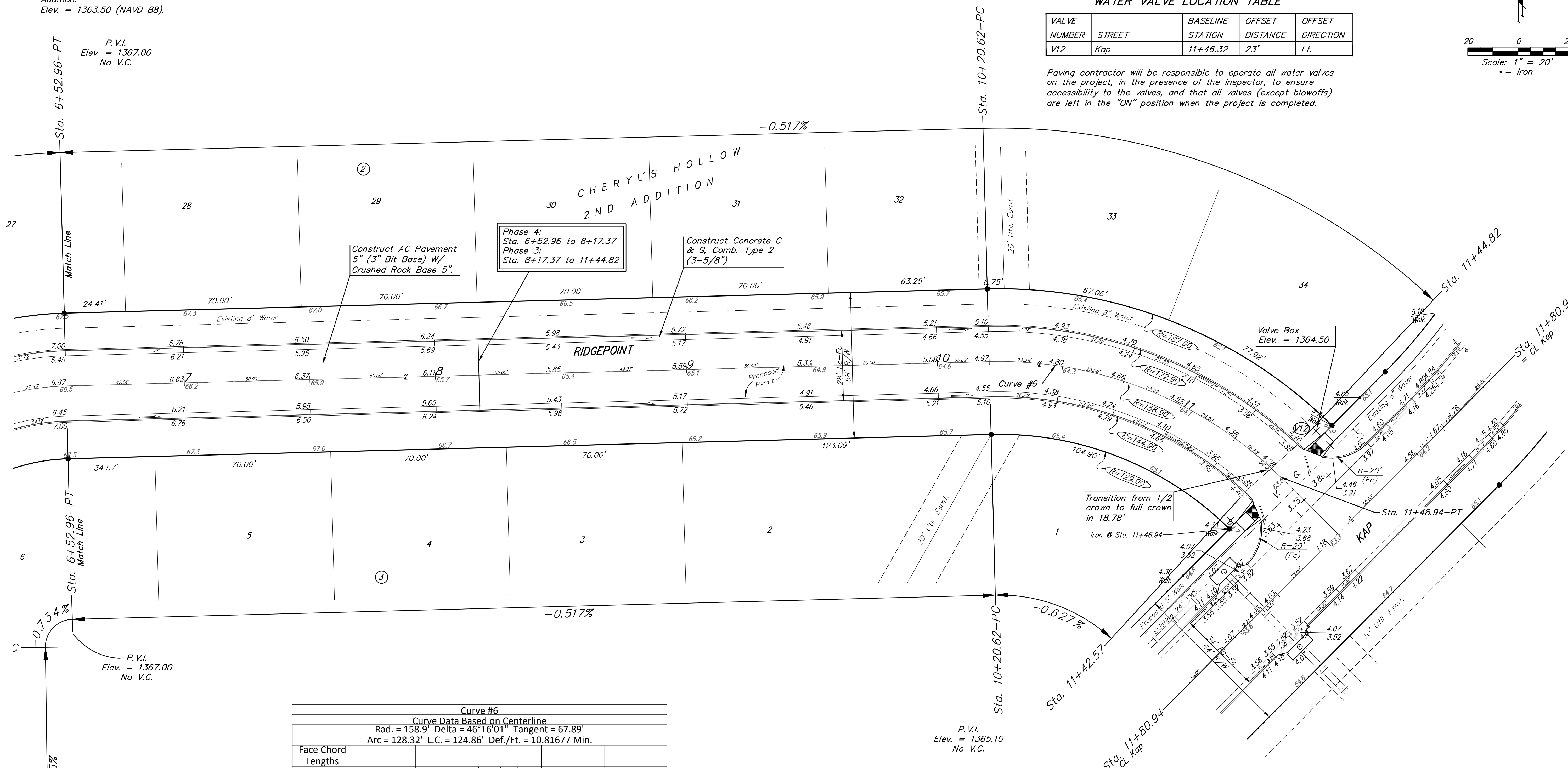
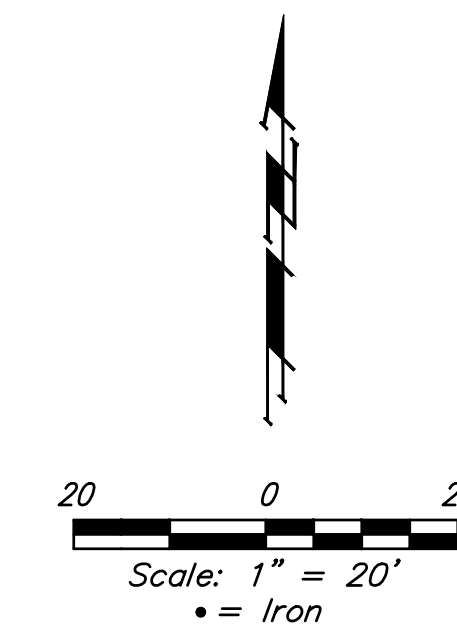
BM #2: "□" with cross on curb inlet near the SE corner of Lot 9, Block 10, Cheryl's Hollow 2nd Addition.
Elev. = 1363.50 (NAVD 88).

Baseline = CL Ridgepoint

WATER VALVE LOCATION TABLE

VALVE NUMBER	STREET	BASELINE STATION	OFFSET DISTANCE	OFFSET DIRECTION
V12	Kap	11+46.32	23'	Lt.

Paving contractor will be responsible to operate all water valves on the project, in the presence of the inspector, to ensure accessibility to the valves, and that all valves (except blowoffs) are left in the "ON" position when the project is completed.



Curve #6					
Curve Data Based on Centerline					
Rad. = 158.9' Delta = 46°16'01" Tangent = 67.89'					
Arc = 128.32' L.C. = 124.86' Def./Ft. = 10.81677 Min.					
Face Chord Lengths	Arc	8' Left	8' Right	Defl.	Total Defl.
Station					
10+20.62	-	-	-	0°00'00"	0°00'00"
10+25.00	4.38'	4.99'	3.77'	0°47'23"	0°47'23"
10+50.00	25.00'	28.43'	21.52'	4°30'25"	5°17'48"
10+75.00	25.00'	28.43'	21.52'	4°30'25"	9°48'13"
11+00.00	25.00'	28.43'	21.52'	4°30'25"	14°18'38"
11+25.00	25.00'	28.43'	21.52'	4°30'25"	18°49'03"
11+42.57	17.57'	19.99'	15.13'	3°10'03"	21°59'06"
11+48.94	6.37'	7.25'	5.49'	1°08'55"	23°08'01"

NOTE: ROLL TYPE CURB & GUTTER (TYPE 2) TO BE CONSTRUCTED ON THE PAVEMENT SHOWN ON THIS SHEET. TOP OF CURB ELEVATIONS ARE GIVEN FOR FULL HEIGHT CURB (TYPE 4).

CHERYL'S HOLLOW 2ND ADD. Ph. 3&4
RIDGEPOINT
 STREET IMPROVEMENTS
 Baughman Company, P.A.
 ENGINEERING, PLANNING, LANDSCAPE ARCHITECTURE
 APPROVED: [Signature] DATE: 08/20/20
 SHEET 8 OF 36