

BENCHMARK:
 BM #1: Chiseled square, top of curb,
 426.4' W. & 960.0' N. of the SE Cor.,
 Lot 8, Block A, Newspring Commercial
 Addition, (N24°43'48"W, 1050.41' from
 SE Cor., Lot 8, Block A).
 Elev. = 1389.22 (NAVD88)

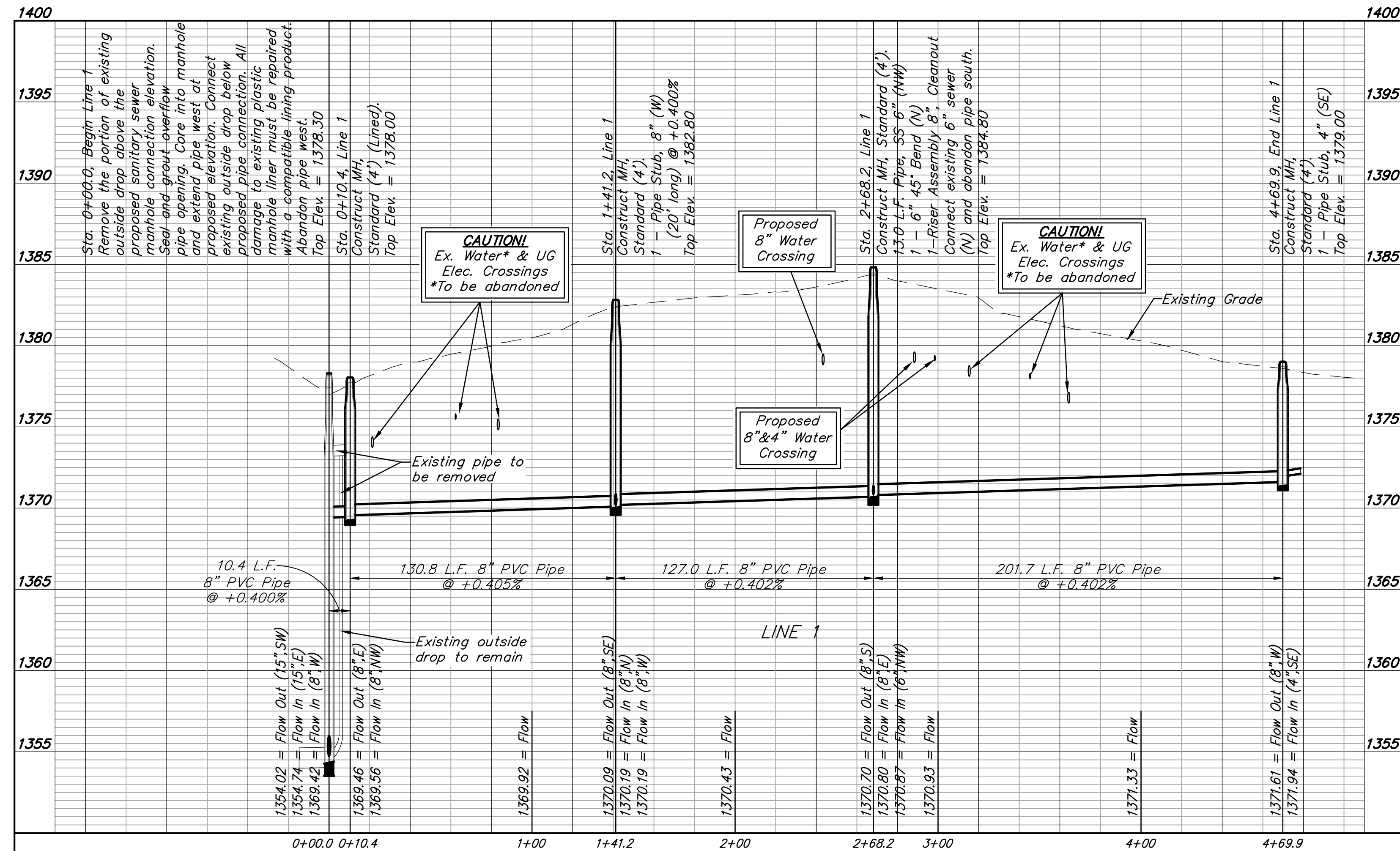
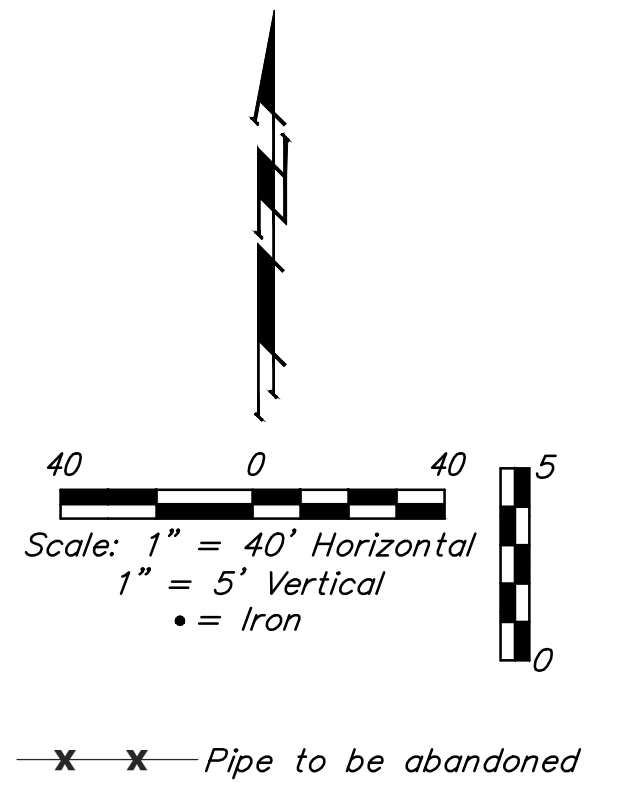
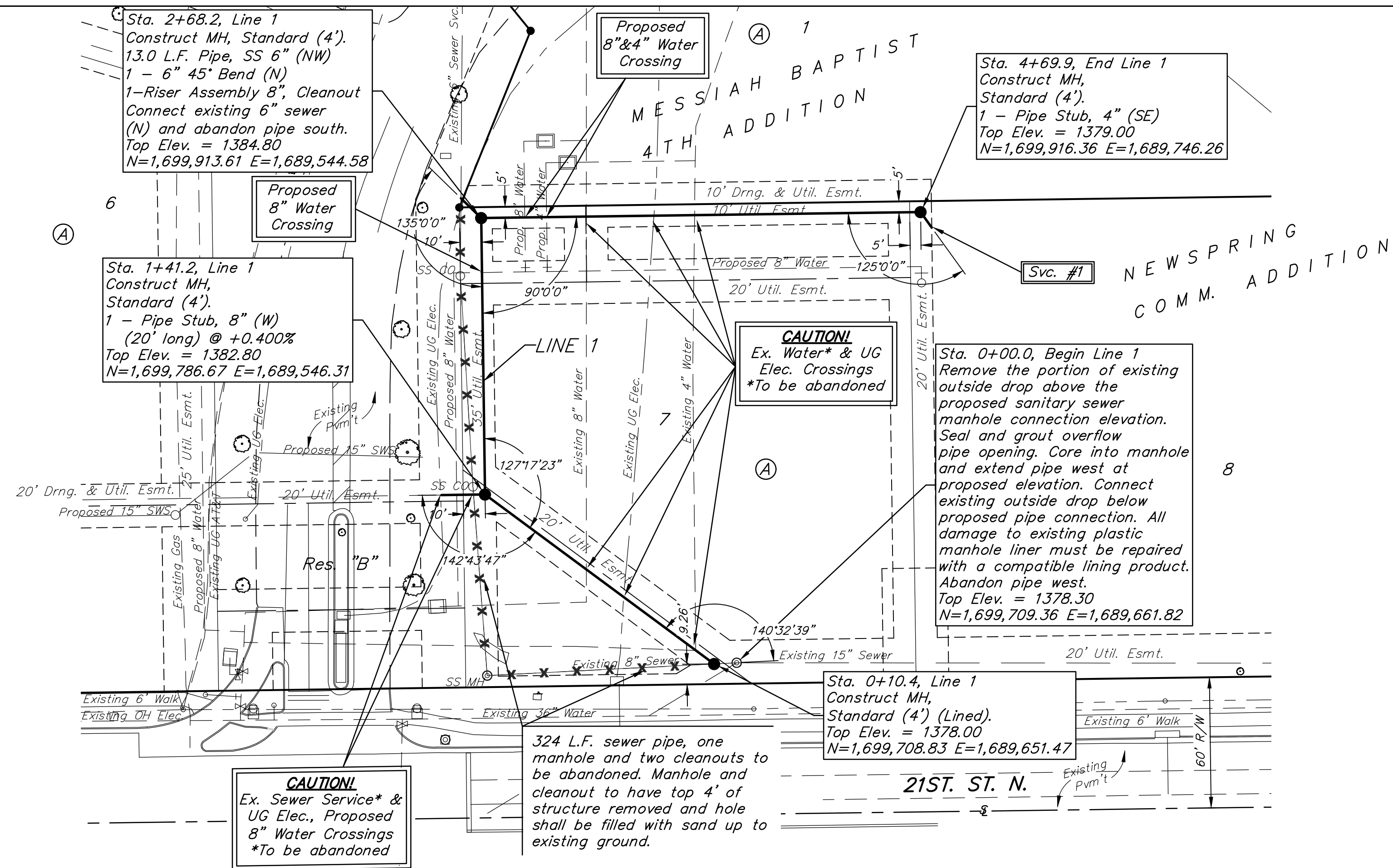
SEWER SERVICE TABLE

NUMBER	TYPE	LOCATION				FOR INFORMATION ONLY	
		LOT NO.	BLOCK NO.	LINE NO.	STATION \ DIRECTION	APPROXIMATE LENGTH 4" PIPE	VERTICAL
1	4" Stub	8	A	1	4+69.9/Rt.	-	8.7'

NOTE: Vertical Riser Pipe shall be extended to 2' minimum above ground water elevation and 4' maximum below proposed ground elevation.

Sta 0+00.0 to Sta 1+41.2, Line 1
 Install 141.2 L.F. Sand Backfill per
 City specs.

Sta. 0+00.0: All work
 associated with removing
 pipe, sealing, grouting,
 coring, re-connecting, and
 liner repair to be included in
 bid item "Connect to
 Existing Manhole".



Sta. 0+00.0 & 2+68.2
 Contractor shall verify
 elevation and alignment of
 existing sewer pipe prior to
 construction and notify
 Engineer of any discrepancy.

