

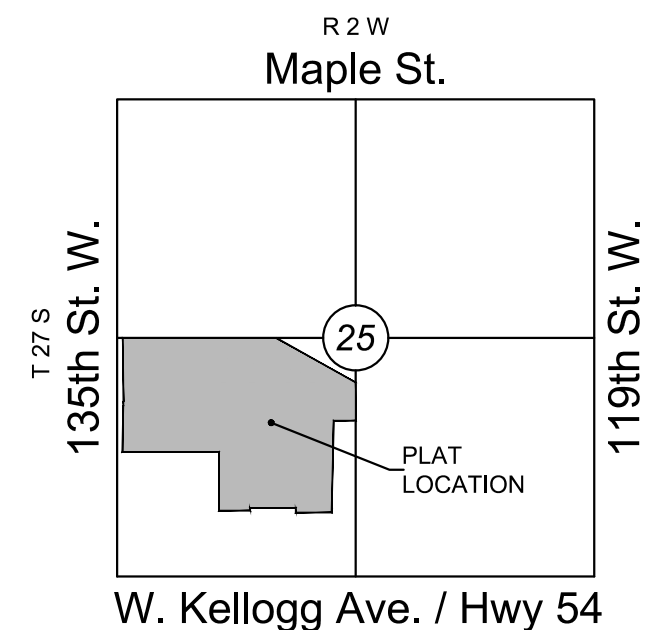
FINAL PLAT

AUBURN LAKES ADDITION

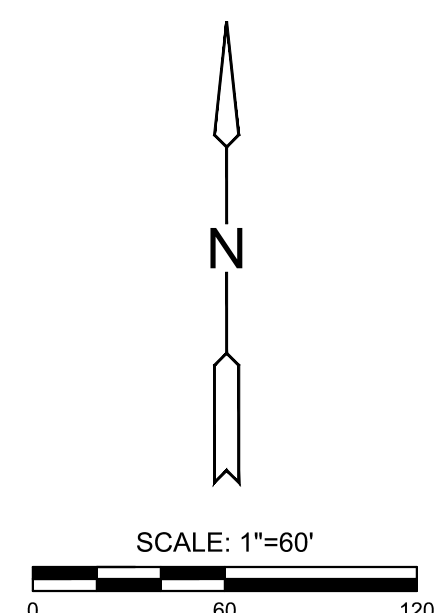
AN ADDITION TO WICHITA, SEDGWICK COUNTY, KANSAS

lying within in a portion of the Southwest Quarter of Section 25,
Township 27 South, Range 2 West of the 6th Principal Meridian

NE cor., SW. ¼, Sec. 25,
T27S, R2W, 6th P.M.
Fnd. Stone



VICINITY MAP



Basis of Bearings: Kansas coordinate system of 1983 south zone bearing of S88°11'57"W on the south line of the Southwest Quarter, Section 25, Township 27 South, Range 2 West of the 6th Principal Meridian.
This plat is surveyed and platted on NAD83 using Kansas state plane south zone coordinates, modified to the surface, having a combined adjustment scale factor of 1.000120014401728

LEGEND

Date of Survey: 9/17/17

- ▲ = Section Corner Monument Found
- = Found monument (see annotation for type)
- = Set ½" rebar w/ MKEC CLS 39 id. cap
- ⊕ = Benchmark
- (M) = Measured
- (P) = Platted
- (D) = Described
- (CM) = Calculated from Measurement
- (CP) = Calculated from Plat
- (CD) = Calculated from Described
- Dmg. = Drainage
- Util. = Utility
- Sdwk = Sidewalk
- St. = Street
- Esmnt. = Easement
- ① = Lot
- ② = Block

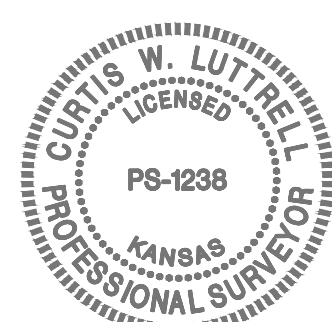
LOT(S)	BLOCK	ELEVATION NAVD 88
21-28	1	1327.9
29	1	1327.5
30	1	1327.0
31-38	1	1326.6
41-43	1	1326.6
44-47	1	1326.7
48-52	1	1326.8
53	1	1331.5
2-16	4	1329.2

Curve #	Length	Radius	Delta	Chord Direction	Chord Length
C16	164.28'	600.00'	15°41'17"	S85°10'35"E	163.77'
C17	156.19'	600.00'	14°54'55"	S84°47'25"E	155.75'
C18	167.59'	100.00'	96°01'16"	S44°14'14"E	148.65'
C19	172.56'	500.00'	19°46'28"	S06°06'50"E	171.71'
C20	180.92'	90.00'	115°10'48"	S41°35'20"W	151.96'
C21	114.56'	600.00'	10°56'23"	N86°17'27"W	114.39'
C22	150.19'	90.00'	95°36'45"	N43°57'16"W	133.36'
C23	117.72'	500.00'	13°29'25"	N02°53'36"W	117.45'
C25	53.21'	90.00'	33°52'27"	S26°06'57"W	52.44'
C26	157.08'	100.00'	90°00'00"	N54°10'44"E	141.42'

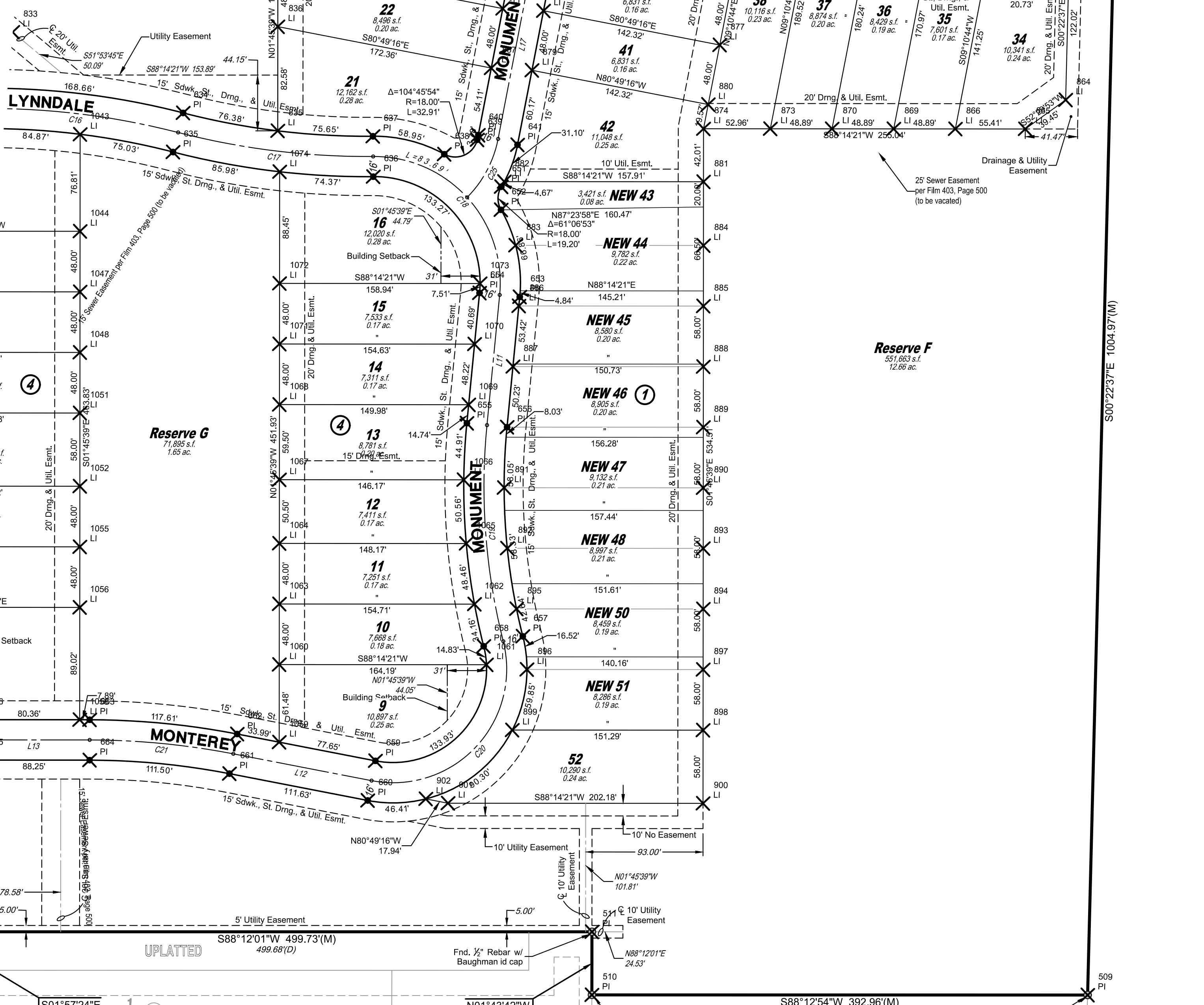
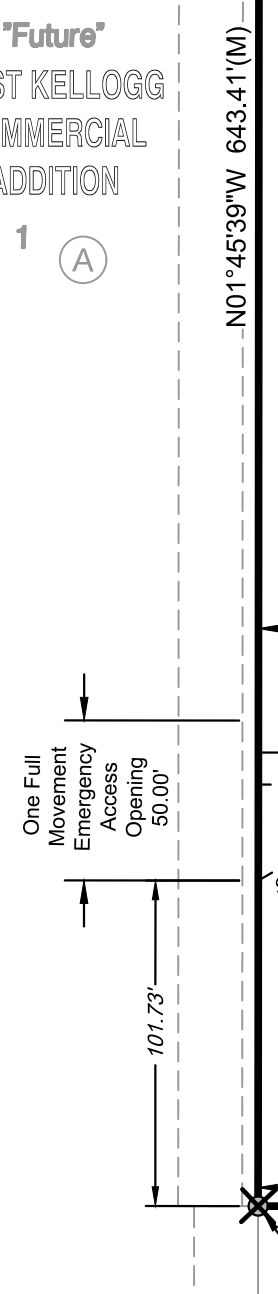
Line #	Length	Direction
L11	103.65'	S03°46'24"W
L12	111.63'	N80°49'16"W
L13	88.25'	S88°14'21"W
L14	100.93'	N03°51'06"E
L15	76.06'	N09°38'18"W
L17	154.52'	N09°10'44"E
L18	260.72'	S80°49'16"E

BENCHMARKS

- BM#1 Square Cut on east nose of center island, 50 feet west of 135th Street West and Onewood Street intersection.
Elev.=1350.35 NAVD88
- BM#2 Square Cut on northeast corner curb inlet, east side of 135th Street West, 33 feet south of NW ¼, Sec. 25, T27S, R2W of the 6th P.M.
Elev.=1346.29 NAVD88



"Future"
WEST KELLOGG
COMMERCIAL
ADDITION



SE. cor., SW. ¼, Sec. 25,
T27S, R2W, 6th P.M.
Fnd. ½" Rebar in Thimble

