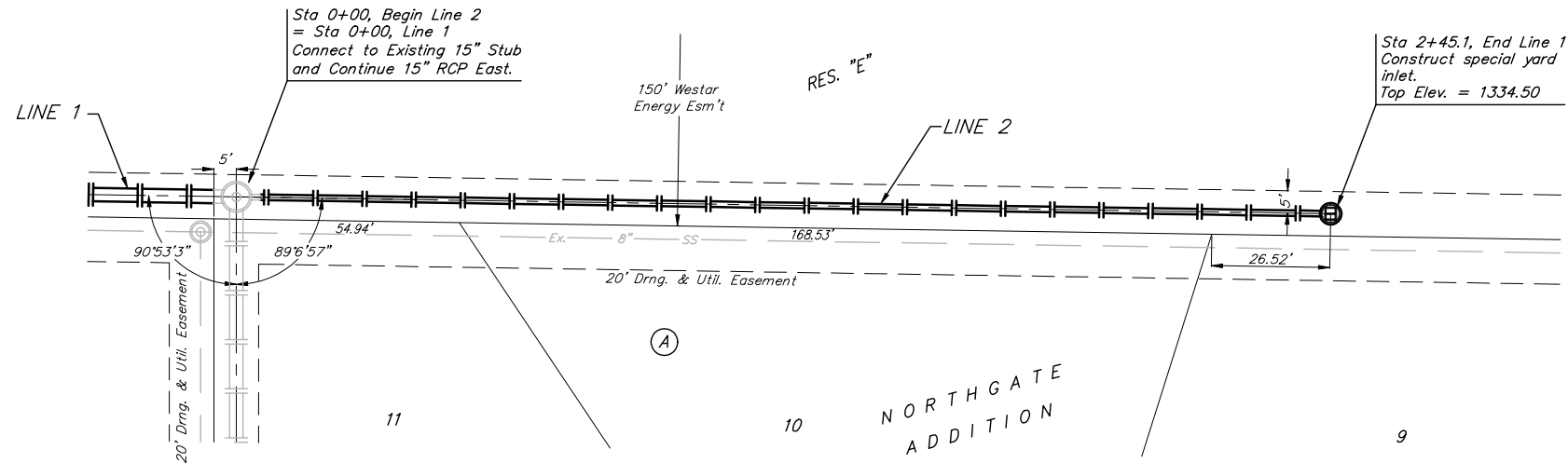


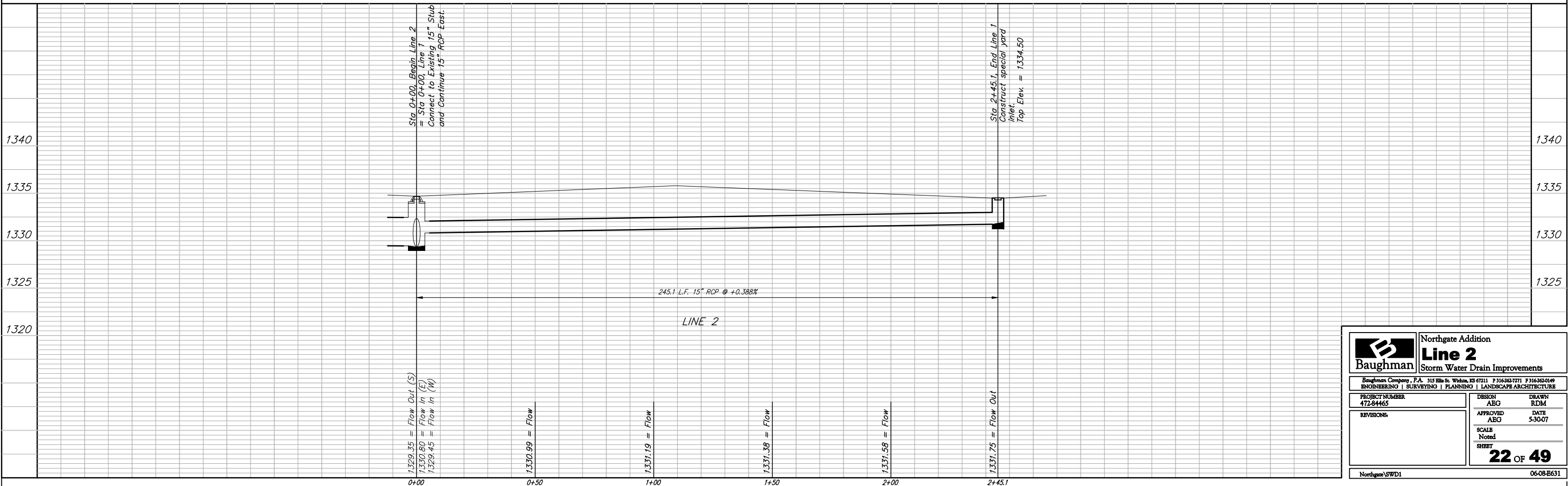
BENCHMARKS:
 BM #1: BENT 60d NAIL IN LIGHT POLE, 55' SSW. OF THE E1/4 COR., SEC. 13, TWP. 26-S, R-1-W.
 ELEV. = 1336.54 NGVD29

BM #2: RAILROAD SPIKE IN E. FACE OF N. "H" POLE, 60± S. OF N. LINE, S1/2, NE1/4, SEC. 13, TWP. 26-S, R-1-W.
 ELEV. = 1335.93 NGVD29

BM #3: "□" CUT ON TOP OF NE COR. OF WATER VAULT, 437± E. & 54± N. OF S1/4 COR., SEC. 13, TWP. 26-S, R-1-W.
 ELEV. = 1334.81 NGVD29



Scale: 1" = 20' Horizontal
 1" = 5' Vertical
 ● = Iron



Baughman		Northgate Addition Line 2 Storm Water Drain Improvements	
Baughman Company, P.A. 315 Ellis St. Wilkins, KS 67211 P 316-262-7771 F 316-262-0149 ENGINEERING SURVEYING PLANNING LANDSCAPE ARCHITECTURE			
PROJECT NUMBER 472-84465	DESIGN ABG	DRAWN RDM	DATE 5-30-07
REVISIONS	APPROVED ABG	SCALE Noted	SHEET 22 OF 49
Northgate SWD1		06-08-E631	