

PERMANENT SEEDING

NOTE: All areas disturbed by construction, excepting the paved areas, proposed sodded area and areas of undisturbed native sod or other desirable vegetation shall be fertilized (limed when required), seeded in kind, and mulched. Soil preparation shall conform to the Best Management Practices for Erosion and Sediment Control.

After the temporary seeding has been completed on the entire project, the permanent seeding shall be done during the normal seeding season.

It shall not be required to till the area to bare ground prior to permanent seeding. If temporary cover has provided stable slopes with no erosion, seed the permanent grasses into the existing cover. If there has been erosion that requires repair prior to seeding, then it may be necessary to regrade the area, resulting in bare ground.

FERTILIZER: A ratio and application rate that equals or exceeds the required minimum rate per acre listed in Summary of Seeding Quantities will be acceptable.

MULCHING: Mulch shall be spread uniformly over all disturbed areas(not covered by erosion control mat) and punched in the soil, unless otherwise noted on the plans. The rate of application per acre, thickness in place, for the various mulching materials are as follows:

Prairie Hay Mulching: 1-3/4 to 2-1/4 Tons per Acre = 1-1/2" loose depth spread uniformly over acre.

The above rates are a guide. It will be at the discretion of the Engineer to determine what rate is sufficient for adequate protection of newly seeded areas.

The amount of mulch required shall be determined in the field.

SEEDING PERIODS	
COOL SEASON	WARM SEASON
February 15 to April 20	December 1 to April 30
August 15 to September 30	December 1 to April 30
SPECIES	SPECIES
Blue Grasses	Bluestems
Brome Grasses	Buffalo Grass
Fescues	Eastern Gamma Grass
Rye Grasses	Grammas
Wheat Grasses	Indian Grass
Red Canary Grass	Low Grasses
	Switch Grass
	Wildflower Mixes

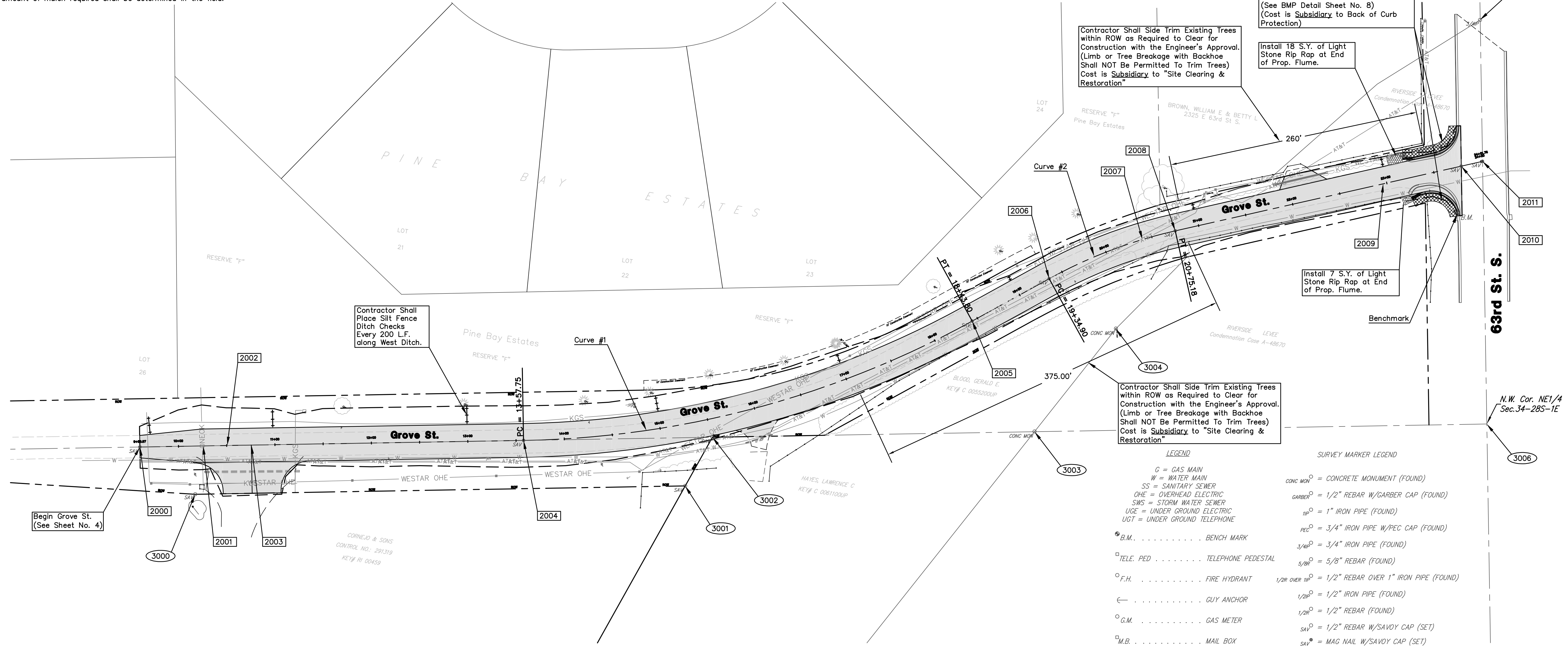
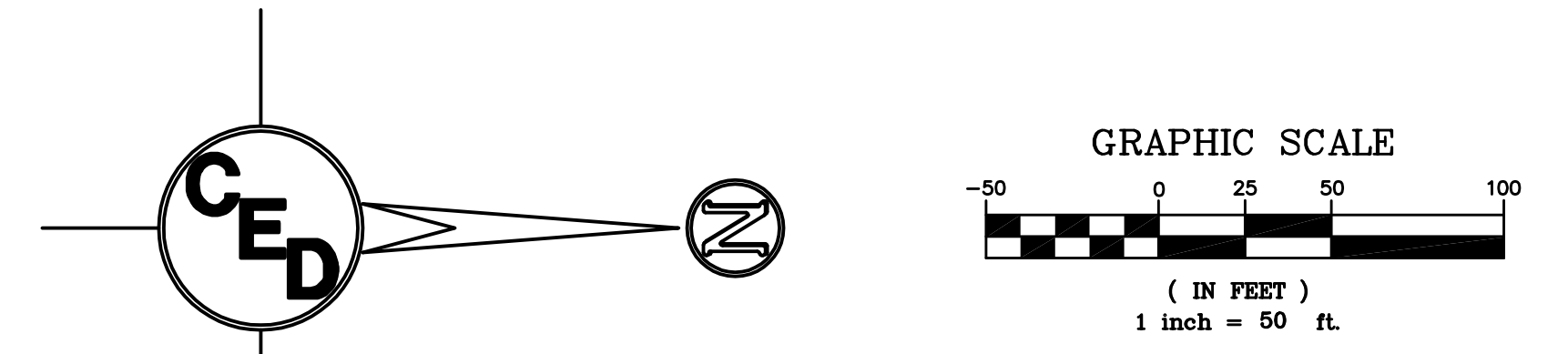
When "COOL SEASON" species are mixed with "WARM SEASON" species, in areas of 5 acres or more, the mixture shall be seeded during the "WARM SEASON". In areas of less than 5 acres, the mixture of "COOL SEASON" and "WARM SEASON" species may be seeded during the "WARM or COOL SEASONS".

SUMMARY OF PERMANENT SEEDING QUANTITIES		
RATE OF APPLICATION	DESCRIPTION	QUANTITY
(Pure Live Seed per acre)	Grass Seeding (In Kind)	As Required
100 Lbs./Acre	Fertilizer(16-20-0)	As Required
125 Lbs./Acre	Mulching	As Required

EROSION CONTROL LEGEND

- ☒ = 8' Wide Back of Curb Protection
- = Silt Fence Ditch Checks

*See Sheets 8-12 for Best Management Practices(BMP) for Installation and Maintenance of Erosion Control Devices. (Contractor will be Responsible for any additional Erosion Control Devices not shown on these plans that are necessary to prevent erosion.)



Begin Grove St. (See Sheet No. 4)

Contractor Shall Place Silt Fence Ditch Checks Every 200 L.F. along West Ditch.

Contractor Shall Side Trim Existing Trees within ROW as Required to Clear for Construction with the Engineer's Approval. (Limb or Tree Breakage with Backhoe Shall NOT Be Permitted To Trim Trees) Cost is Subsidiary to "Site Clearing & Restoration"

Install 105 S.Y. of 8' Wide "Back of Curb Protection" behind Prop. Curb as shown in Hatched Area. (See BMP Detail Sheet No. 8) (Cost is Subsidiary to Back of Curb Protection)

Install 18 S.Y. of Light Stone Rip Rap at End of Prop. Flume.

Install 7 S.Y. of Light Stone Rip Rap at End of Prop. Flume.

Contractor Shall Side Trim Existing Trees within ROW as Required to Clear for Construction with the Engineer's Approval. (Limb or Tree Breakage with Backhoe Shall NOT Be Permitted To Trim Trees) Cost is Subsidiary to "Site Clearing & Restoration"

LEGEND

- G = GAS MAIN
- W = WATER MAIN
- SS = SANITARY SEWER
- OHE = OVERHEAD ELECTRIC
- SWS = STORM WATER SEWER
- UGE = UNDER GROUND ELECTRIC
- UGT = UNDER GROUND TELEPHONE
- B.M. = BENCH MARK
- TELE. PED = TELEPHONE PEDESTAL
- F.H. = FIRE HYDRANT
- GUY ANCHOR
- G.M. = GAS METER
- M.B. = MAIL BOX
- PL MKR = PIPELINE MARKER
- L.P. = POWER POLE W/LIGHT
- SIGN

SURVEY MARKER LEGEND

- CONC. MON = CONCRETE MONUMENT (FOUND)
- GARBER = 1/2" REBAR W/GARBER CAP (FOUND)
- 11P = 1" IRON PIPE (FOUND)
- PEC = 3/4" IRON PIPE W/PEC CAP (FOUND)
- 3/4P = 3/4" IRON PIPE (FOUND)
- 5/8P = 5/8" REBAR (FOUND)
- 1/2R OVER 1P = 1/2" REBAR OVER 1" IRON PIPE (FOUND)
- 1/2P = 1/2" IRON PIPE (FOUND)
- 1/2R = 1/2" REBAR (FOUND)
- SAV = 1/2" REBAR W/SAVOY CAP (SET)
- SAV = MAG NAIL W/SAVOY CAP (SET)

2000 = S. Grove St. Staking Points

3000 = Control Points

S. Grove Street Staking Points				
Number	Northing	Easting	Raw Desc	BL Stationing
2000	19844.67	19925.90	Mag Nail w/Savoy Cap Set	9+59.97
2001	19910.23	19924.78	BVCS	10+25.54
2002	19935.23	19924.35	PVI #1	10+75.54
2003	19960.22	19923.92	EVCS	11+25.54
2004	20242.40	19919.11	PC Curve #1 (Mag Nail w/Savoy Cap Set)	13+57.75
2005	20707.49	19795.34	PT Curve #1 (Mag Nail w/Savoy Cap Set)	18+43.80
2006	20787.30	19751.42	PC Curve #2 (Mag Nail w/Savoy Cap Set)	19+34.90
2007	20884.01	19710.75	PVI #2	20+40.01
2008	20918.01	19701.79	PT Curve #2 (Mag Nail w/Savoy Cap Set)	20+75.18
2009	21133.59	19653.00	PVI #3	22+96.21
2010	21214.53	19634.69	Mag Nail w/Savoy Cap Set	23+79.19
2011	21236.54	19629.71	PI (Mag Nail w/Savoy Cap Set)	24+01.76

Horizontal Control Points			
Number	Northing	Easting	Raw Desc
3000	19901.98	19974.92	1/2" Rebar w/Savoy Cap Set
3001	20410.01	19966.25	1/2" Rebar w/Savoy Cap Set
3002	20438.21	19915.76	1/2" Rebar w/Savoy Cap Set
3003	20772.1	19910.06	Concrete Monument Found
3004	20856.48	19803.34	Concrete Monument Found
3005	21233.98	19483.19	3/4" Iron Pipe Found
3006	21240.99	19902.05	NW Cor. NE1/4 Sec. 34-285-1E

BENCHMARK:
Square Cut on Top of Curb @ East End of Curb Return @ S.E. Corner of Grove & 63rd Street South.
Elev.=1266.12

SURVEY DISCLAIMER:
TOPOGRAPHIC SURVEY AND CONTOUR MAP USED IN PREPARING PLANS WAS PROVIDED BY SAVOY COMPANY, P.A., 535 S. EMPORIA, SUITE 104, WICHITA, KS. ENGINEER DOES NOT GUARANTEE SURVEY ELEVATIONS FOR ACCURACY. CONTRACTOR SHALL VERIFY ELEVATIONS AND NOTIFY ENGINEER OF ANY DISCREPANCIES.

UTILITIES SHOWN REPRESENT THE BEST INFORMATION AVAILABLE FOR DESIGN. ADDITIONAL UTILITIES MAY BE PRESENT ON THIS PROJECT. THE CONTRACTOR SHALL BE RESPONSIBLE FOR DETERMINING THE EXACT LOCATION, DEPTH AND SIZE OF ALL UNDERGROUND UTILITIES PRIOR TO CONSTRUCTION. THE CONTRACTOR SHALL BE LIABLE FOR ANY DAMAGE CAUSED BY THE FAILURE TO DO SO.

GROVE STREET
SITE PLAN / EROSION CONTROL
WICHITA, SEDGWICK COUNTY, KANSAS
PROJ. NO.: 20061370
CERTIFIED ENGINEERING DESIGN, P.A.
810 WEST DOUGLAS, SUITE C
WICHITA, KANSAS 67203
PH.(316)262-8808 FAX.(316)262-1669

DESIGNED: HDF	SCALE: 1"=50'	SHEET
DRAWN: JDT	DATE: 09-06	2
CHECKED: HDF	CED FILE: Grove Rd-Base	TOTAL 17