

- LEGEND
- G = GAS MAIN
 - W = WATER MAIN
 - SS = SANITARY SEWER
 - OHE = OVERHEAD ELECTRIC
 - SWS = STORM WATER SEWER
 - UGE = UNDER GROUND ELECTRIC
 - UGT = UNDER GROUND TELEPHONE

- ⊙ B.M. BENCH MARK
 - ⊙ TELE. PED TELEPHONE PEDESTAL
 - ⊙ F.H. FIRE HYDRANT
 - ← GUY ANCHOR
 - ⊙ G.M. GAS METER
 - ⊙ M.B. MAIL BOX
 - ⊙ PL MKR PIPELINE MARKER
 - ⊙ L.P. POWER POLE W/LIGHT
 - ⊙ POWER POLE
 - ⊙ SIGN
- = Existing Asphaltic Concrete Road To Be Removed
 - = Proposed 7" A.C. Pavement on 8" Crushed Rock Base
 - = Control Points (See Site Plan Sheet No. 2)

BENCHMARK:
 Square Cut on Top of Curb @ East End of Curb Return @ S.E. Corner of Grove & 63rd Street South.
 Elev.=1266.12

UTILITIES SHOWN REPRESENT THE BEST INFORMATION AVAILABLE FOR DESIGN. ADDITIONAL UTILITIES MAY BE PRESENT ON THIS PROJECT. THE CONTRACTOR SHALL BE RESPONSIBLE FOR DETERMINING THE EXACT LOCATION, DEPTH AND SIZE OF ALL UNDERGROUND UTILITIES PRIOR TO CONSTRUCTION. THE CONTRACTOR SHALL BE LIABLE FOR ANY DAMAGE CAUSED BY THE FAILURE TO DO SO.

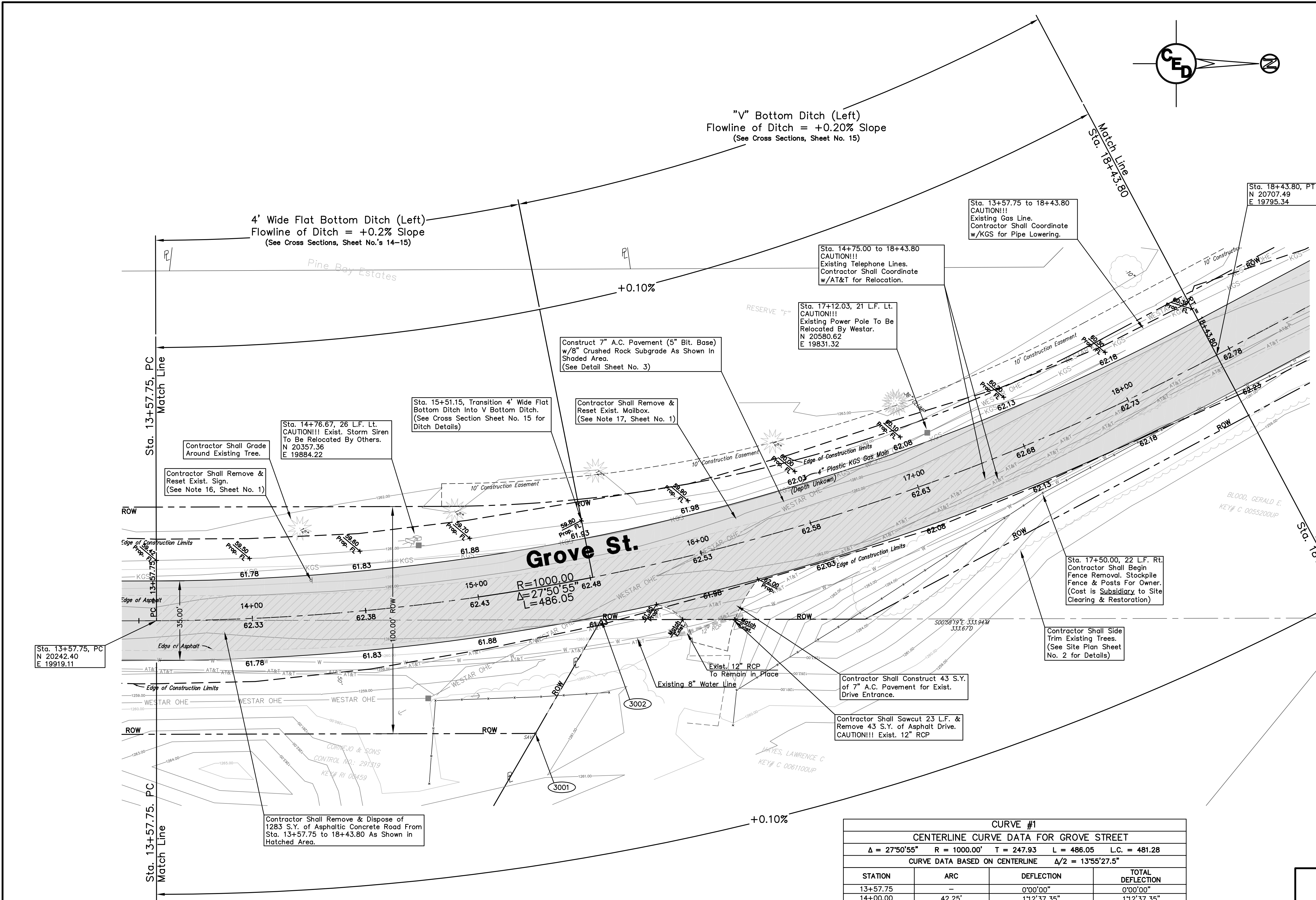
CURVE #1

CENTERLINE CURVE DATA FOR GROVE STREET

$\Delta = 27^{\circ}50'55"$ $R = 1000.00'$ $T = 247.93$ $L = 486.05$ $L.C. = 481.28$

CURVE DATA BASED ON CENTERLINE $\Delta/2 = 13^{\circ}55'27.5"$

STATION	ARC	DEFLECTION	TOTAL DEFLECTION
13+57.75	-	0°00'00"	0°00'00"
14+00.00	42.25'	1°12'37.35"	1°12'37.35"
14+50.00	50.00'	1°25'56.62"	2°38'33.97"
15+00.00	50.00'	1°25'56.62"	4°4'30.59"
15+50.00	50.00'	1°25'56.62"	5°30'27.21"
16+00.00	50.00'	1°25'56.62"	6°56'23.83"
16+50.00	50.00'	1°25'56.62"	8°22'20.45"
17+00.00	50.00'	1°25'56.62"	9°48'17.07"
17+00.00	50.00'	1°25'56.62"	11°14'13.7"
18+00.00	50.00'	1°25'56.62"	12°40'10.3"
18+43.80	43.80'	1°15'17.2"	13°55'27.5"



PAVING PLANS FOR
GROVE STREET
 WICHITA, SEDGWICK COUNTY, KS
 PROJ. NO.: 20061370

CERTIFIED ENGINEERING DESIGN, P.A.

810 WEST DOUGLAS, SUITE C
 WICHITA, KANSAS 67203
 PH.(316)262-8808 FAX.(316)262-1669

DESIGNED: HDF	SCALE: 1"=20'	SHEET
DRAWN: JDT	DATE: 09-06	5
CHECKED: HDF	CED FILE: Grove Rd-Base	TOTAL 17