

GENERAL NOTES:

- The Contractor shall comply with all applicable safety regulations. All construction shall be completed following current City Standard Specifications and Special Provisions.
- Contractor will be required to provide notice to utility companies a minimum of seventy-two (72) hours prior to any excavation, as follows:

Kansas One-Call 687-2470

The Contractor must notify the following in case of an emergency:

AT&T	1-800-246-8464
City of Wichita Water & Sewer Dept.	1-316-219-8921
City of Wichita Stormwater	1-316-268-4090
City of Wichita Traffic	1-316-268-4034
Cox Communications	1-888-249-3530
Kansas Gas Service	1-888-482-4950
Everygy	1-800-544-4857

- Utility service lines, poles, etc. are to be adjusted as necessary by others prior to construction unless the plans specifically call for their adjustment by the Contractor or unless the plans specifically identify a utility to be adjusted by its owner during construction. Existing utilities and their location, as shown on the plans, represent the best information obtainable for design. The Contractor will be required to work around existing utilities within the Right-of-Way which do not conflict with proposed construction.

- Rubble from the removal of miscellaneous structures and excess excavation which is to be wasted shall be disposed of on sites to be provided by the Contractor. These sites shall be approved by the Engineer as to suitability, appearance and site location. Locations, in the opinion of the Engineer, that will leave an unsightly appearance will not be approved. All disposal sites must be approved by the Kansas Department of Health and Environment. Material either stockpiled or disposed of in a flood plain would require a Kansas State Board of Agriculture permit. Any material dumped in waters of the United States or wetlands is subject to U.S. Corps. of Engineers permitting regulations. Any material buried or stockpiled beyond approved construction limits would require additional archaeological investigations unless buried in a previously approved borrow location.

- Trees and shrubs in public Right-of-Way which are in direct conflict with proposed new construction shall be removed by the Contractor with the Engineer's approval. Trees and shrubs which are not in direct conflict with proposed new construction shall be saved and protected from damage.

- The Contractor shall give all property owners and/or tenants of developed property abutting the construction of this project a minimum of ten (10) days notice prior to start of construction.

- The Contractor shall be responsible for preserving property irons. The Contractor will be required to re-establish any property irons which are damaged or destroyed by his construction operations. Such irons shall be re-established by a licensed land surveyor in accordance with state laws.

- The Water Distribution Division shall field locate water valves one time during construction when requested by the Contractor. It shall be the Contractor's responsibility to preserve such field locations during the construction process. Water valves, valve boxes or fire hydrants damaged during construction shall be repaired by the Contractor at his own expense. Valve boxes and water meters within the project limits shall be adjusted to match field grades.

- If traffic is impacted by construction, a traffic control plan must be submitted and approved by the City Traffic Engineer, at traffic@wichita.gov before construction can begin. The Contractor shall be responsible for all traffic control measures to facilitate construction. All construction zone markings and signage shall conform to the latest version of the Manual on Uniform Traffic Control Devices (MUTCD) as published by the US Dept. of Transportation, Federal Highway Administration. All costs associated with construction markings and signage shall be the Contractors responsibility.

- All elevations shown are NAVD 88.

- All areas disturbed during construction that will not be under proposed pavement shall be restored to match existing conditions.

- All existing pavement and curb and gutter within the construction limits shall be saw cut, full depth, to the lines shown on the plans, or to the nearest joint, and removed, unless otherwise noted. If removal limits are within three feet of a joint, remove to the joint.

- All traffic control devices in the work zone (including markings and signs) and their installation and maintenance shall comply with the latest edition of the Manual on Uniform Traffic Control Devices (MUTCD). All traffic control devices in the traveled way or clear zone shall be crashworthy (NCHRP Report 350 or MASH compliant).

http://safety.fhwa.dot.gov/roadway_dept/policy_guide/road_hardware/wzd

- All construction equipment, including vehicles, materials, and debris,

shall be stored outside of the clear zone. Where this cannot be achieved the contractor shall place appropriate signs, object identifiers, and/or barricades in compliance with the MUTCD.

- Except when required for safety, traffic control shall not block any lanes or sidewalks when work is not being performed.

- The Contractor shall protect from damage and support existing utilities through construction as approved by the utility owner and Engineer at the Contractor's expense.

- The Contractor shall limit the extent of trench openings over nights and weekends to less than 50 feet.

- No shrink or swell factors have been applied to the earthwork quantities shown on this project. All earthwork quantities are based on raw surface volume comparisons.

- Subdivision Benchmark - (1 flat survey marker No. 8134-08 3" top diameter) in top of curb adjacent to each Fire Hydrant. Cost shall be incidental to L.F. Concrete C&G, Comb. Type 2 (3 5/8").

- All street ROW and Reserves shall be permanent seeding, all other areas may be temporary seeding. All seeding per City of Wichita Specifications.

- Excess dirt generated from installation of underground utilities is to be stockpiled on Lot 3, Block B.

APPROVED AS NOTED
BY WICHITA PUBLIC WORKS ENGINEERING
AND STORMWATER DIVISION

Engineering _____

Stormwater _____

Stormwater Certification:
New Development or Redevelopment (Circle One)

Stormwater Permit #:
NOI Permit #:

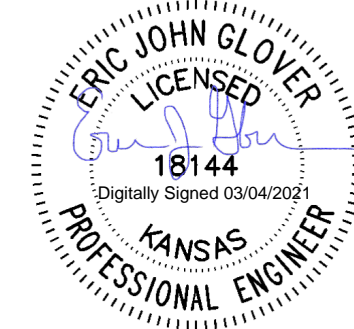
These construction plans were prepared in accordance with the current Stormwater Management Regulations as set forth in the City of Wichita's Stormwater Management Ordinance 16.32 and the policies/guidelines presented in the Wichita/Sedgwick County Stormwater Manual.

Site Area (Acres) = 8.3
Disturbed Area (Acres) = 1.8
Water Quality Treatment: Wet Pond
Downstream Channel Protection: N/A
Detention: Yes
The BMP used for this development is Wet Pond.

Benchmarks

BENCHMARK #1:
CHISELED SQUARE ON THE TOP OF CURB AT THE LOT LINE COMMON TO LOT 17, BLOCK 1, CLEAR CREEK ADDITION AND LOT 17, BLOCK C, CLEAR CREEK FOURTH ADDITION.
ELEVATION = 1324.42 (NAVD88, G18)

BENCHMARK #2:
CHISELED SQUARE ON THE TOP OF CURB AT THE SOUTH CURB RETURN AT THE SOUTHWEST CORNER OF MORRIS STREET AND WATSON STREET
ELEVATION = 1330.40 (NAVD88, G18)



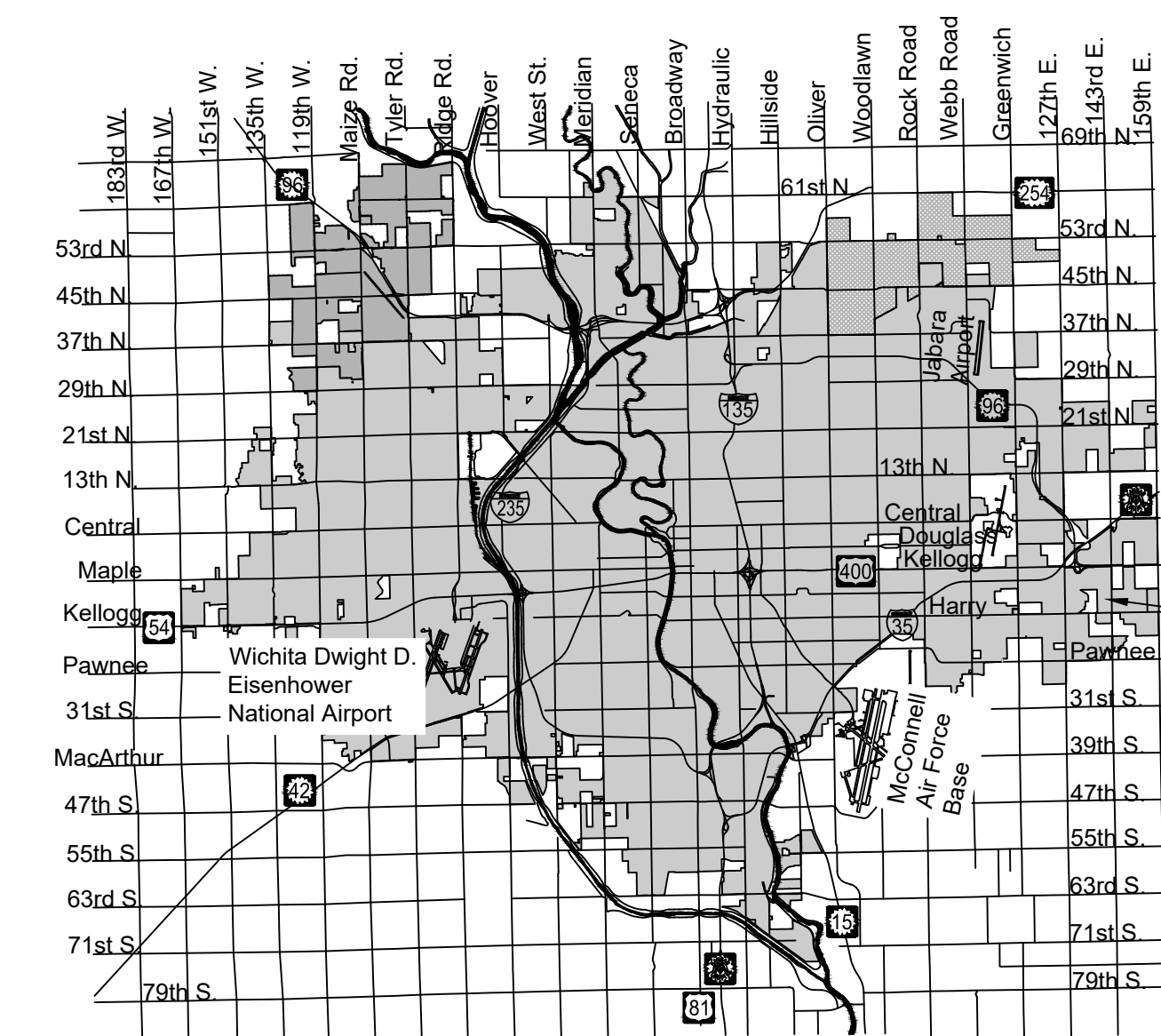
PAVING IMPROVEMENTS

to serve

CLEAR CREEK 4TH ADDITION

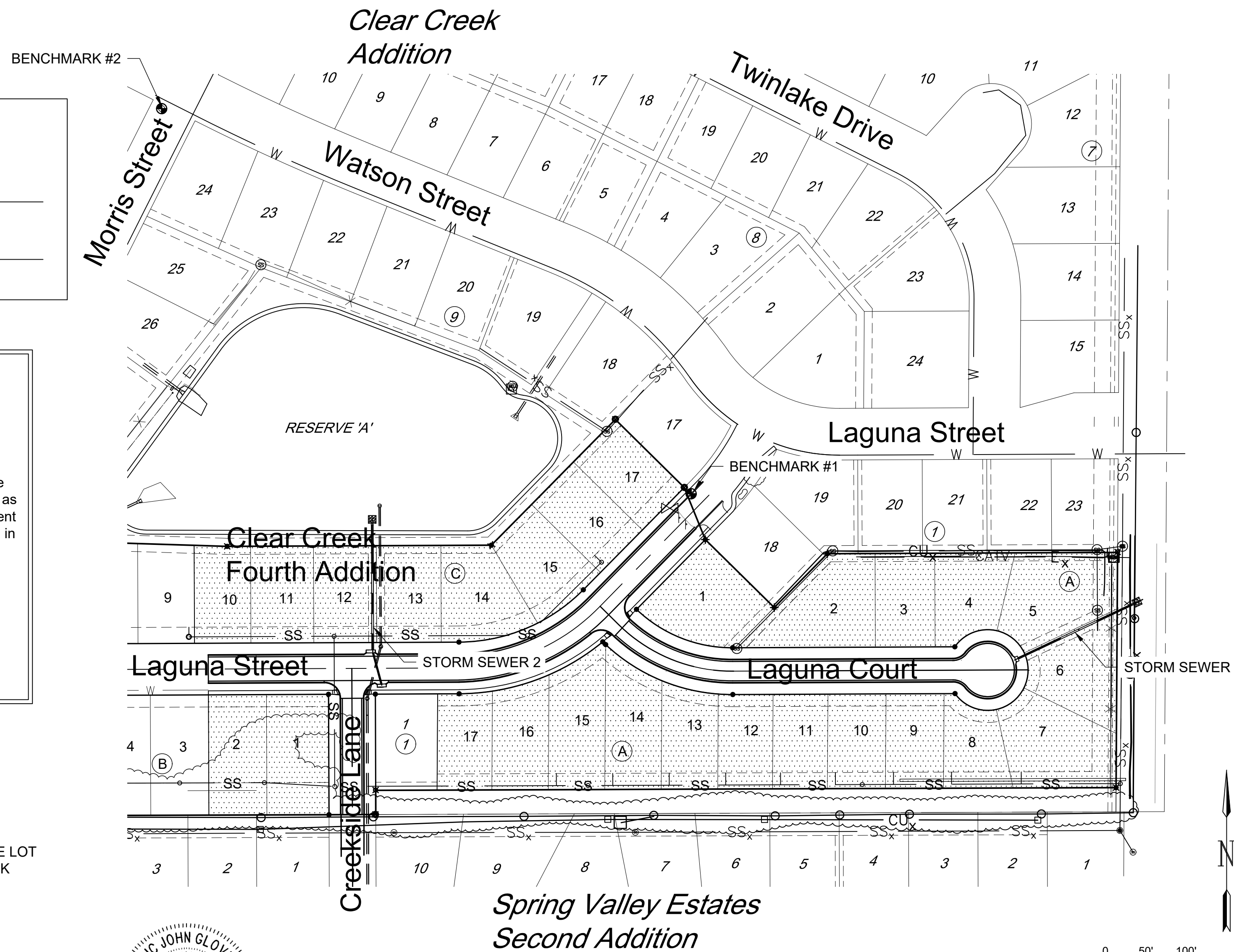
CITY OF WICHITA, KANSAS

Gary Janzen, P.E. City Engineer
Project Number 472-2020-085612
Org. Code No. 47466520



Vicinity Map

PROJECT LOCATION

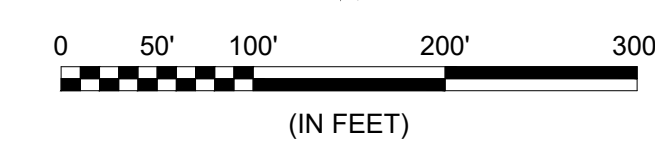


Sheet Index

Sheet	Title
1	TITLESHEET
2	CURB & GUTTER DETAILS
3	VALLEY GUTTER DETAILS
4	ASPHALT PAVING DETAILS
5	SIGN DETAILS
6	WHEELCHAIR RAMP DETAILS
7	CREEKSIDE LANE
8	LAGUNA STREET
9	LAGUNA STREET
10	LAGUNA COURT
11	CUL-DE-SAC
12	INTERSECTIONS
13	POND WALK PLAN
14	TYPE 1A CURB INLET DETAILS
15	INLET UNDERDRAIN
16	STORM SEWER 1
17	STORM SEWER 2
18	EASEMENT GRADING
19	LOT GRADING
20	GRADING SECTIONS
21	FOUR-CORNER GRADING PLAN
22	COORDINATE MAP
23	SEEDING NOTES
24	SEEDING PLAN
25	EROSION CONTROL PLAN
26	SW-501
27	SW-502
28	SW-503
29	SW-504
30	SW-505
31	FINAL PLAT

EARTHWORK QUANTITIES

Description	Cu. Yds.
Cut	1,600
Fill	2,050
Net (Fill)	450



March 2021

PLANS PREPARED BY

