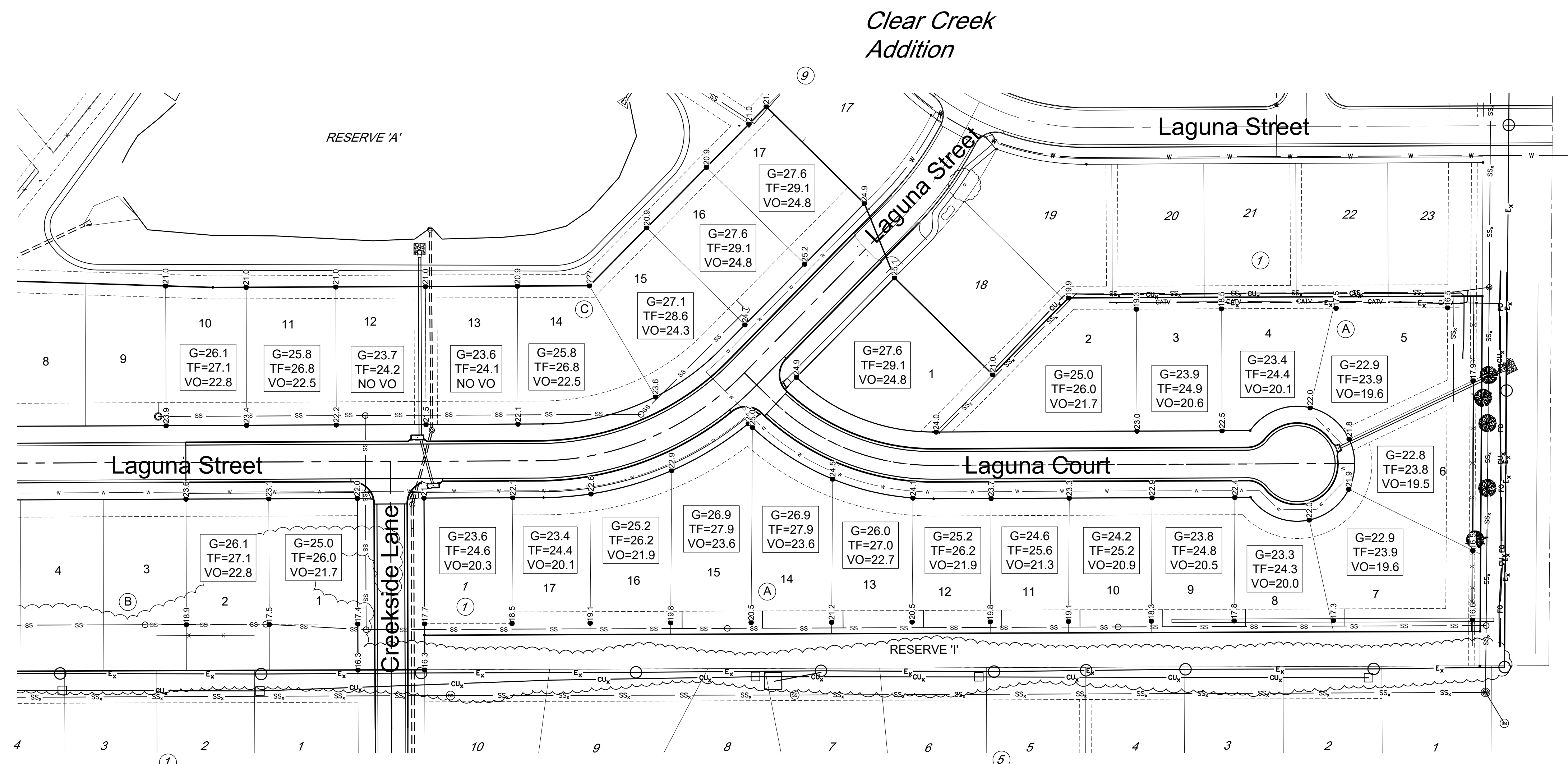




© 2021 GARVER, LLC
 THIS DOCUMENT, ALONG WITH THE IDEAS AND DESIGNS CONVEYED HEREIN, SHALL BE CONSIDERED INSTRUMENTS OF PROFESSIONAL SERVICE AND ARE PROPERTY OF GARVER, LLC. ANY USE, REPRODUCTION, OR DISTRIBUTION OF THIS DOCUMENT, ALONG WITH THE IDEAS AND DESIGN CONTAINED HEREIN, IS PROHIBITED UNLESS AUTHORIZED IN WRITING BY GARVER, LLC OR EXPLICITLY ALLOWED IN THE GOVERNING PROFESSIONAL SERVICES AGREEMENT FOR THIS WORK.



Benchmarks

BENCHMARK #1:
 CHISELED SQUARE ON THE TOP OF CURB AT THE LOT LINE COMMON TO LOT 17, BLOCK 1, CLEAR CREEK ADDITION AND LOT 17, BLOCK C, CLEAR CREEK FOURTH ADDITION.
 ELEVATION = 1324.42 (NAVD88, G18)

BENCHMARK #2:
 CHISELED SQUARE ON THE TOP OF CURB AT THE SOUTH CURB RETURN AT THE SOUTHWEST CORNER OF MORRIS STREET AND WATSON STREET
 ELEVATION = 1330.40 (NAVD88, G18)

MINIMUM BUILDING PAD ELEVATION FOR LOWEST OPENING INTO STRUCTURES		
BLOCK	LOT NO.	ELEVATION (NAVD88, G12B)
C	10-17	1321.0

File: L:\2020\20T41005 - Clear Creek Ph 6\Drawings\C3D\PAVING\Four-Corner Grading.dwg Last Save: 2/26/2021 2:04 PM Last saved by: CDJurey
 Last plotted by: Jurey, Caleb D. Plot Style: --- Plot Scale: 1:2.5849 Plot Date: 3/4/2021 8:42 AM Plotter used: None

REV.	DATE	DESCRIPTION	BY



CITY OF WICHITA
 WICHITA, KANSAS
 CLEAR CREEK ADDITION
 PAVING & DRAINAGE

FOUR-CORNER GRADING PLAN

JOB NO.: 20T41005
 DATE: MAR 2021
 DESIGNED BY: EJJ
 DRAWN BY: CDJ

BAR IS ONE INCH ON ORIGINAL DRAWING
 IF NOT ONE INCH ON THIS SHEET, ADJUST SCALES ACCORDINGLY.

DRAWING NUMBER
