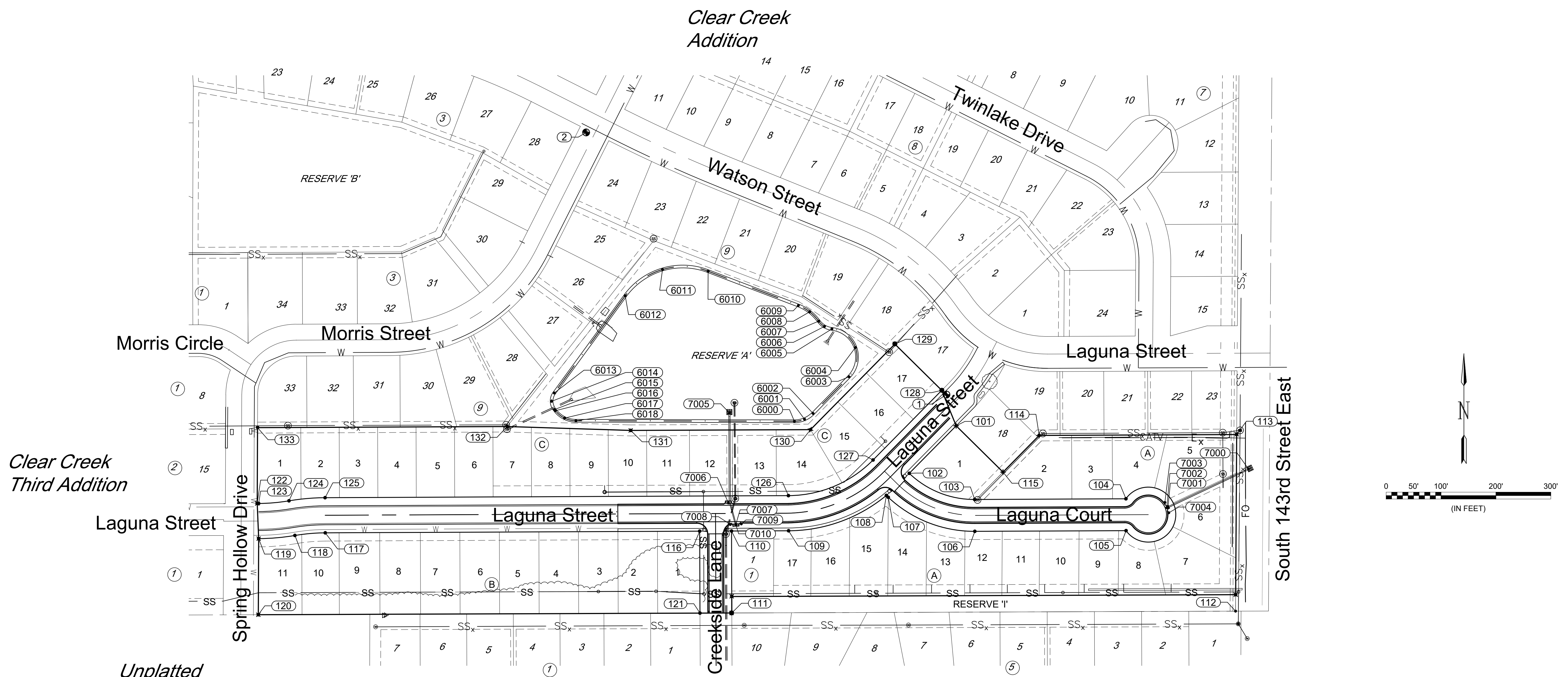




© 2021 GARVER, LLC
 THIS DOCUMENT, ALONG WITH THE IDEAS AND DESIGNS CONVEYED HEREIN, SHALL BE CONSIDERED INSTRUMENTS OF PROFESSIONAL SERVICE AND ARE PROPERTY OF GARVER, LLC. ANY USE, REPRODUCTION, OR DISTRIBUTION OF THIS DOCUMENT, ALONG WITH THE IDEAS AND DESIGN CONTAINED HEREIN, IS PROHIBITED UNLESS AUTHORIZED IN WRITING BY GARVER, LLC OR EXPLICITLY ALLOWED IN THE GOVERNING PROFESSIONAL SERVICES AGREEMENT FOR THIS WORK.



Unplatted
 Owner: Virgie A. Alden Living Trust Under Agreement

**Spring Valley Estates
 Second Addition**

Point Table			
Point #	Northing	Easting	Description
1	20394.06	19413.25	BENCHMARK #1
2	20871.45	18756.78	BENCHMARK #2
101	20337.25	19430.90	BLK CNR
102	20250.74	19345.56	BLK CNR
103	20203.13	19464.71	PT
104	20204.35	19740.25	BLK CNR
105	20146.35	19740.51	BLK CNR
106	20145.13	19464.96	PC
107	20207.10	19307.29	PT
108	20210.49	19303.75	BLK CNR
109	20146.13	19125.67	PT
110	20145.67	19021.69	BLK CNR
111	19996.43	19022.24	BLK CNR
112	19999.78	19940.00	BLK CNR
113	20321.35	19942.02	BLK CNR

Point Table			
Point #	Northing	Easting	Description
114	20319.75	19582.20	BLK CNR
115	20252.98	19516.33	BLK CNR
116	20145.41	18963.69	BLK CNR
117	20142.39	18281.53	PC
118	20137.57	18226.28	PRC
119	20131.85	18160.24	BLK CNR
120	19993.28	18159.60	BLK CNR
121	19996.22	18964.24	BLK CNR
122	20195.84	18157.53	BLK CNR
123	20195.85	18160.24	PC
124	20200.66	18215.49	PRC
125	20206.38	18281.24	PT
126	20210.13	19125.39	PC
127	20275.03	19279.62	PT
128	20401.85	19404.73	BLK CNR

Point Table			
Point #	Northing	Easting	Description
129	20486.13	19319.30	BLK CNR
130	20330.31	19165.59	BLK CNR
131	20328.85	18838.01	BLK CNR
132	20335.97	18612.98	BLK CNR
133	20333.96	18158.16	BLK CNR
6000	20345.55	19136.25	WALK PC
6001	20349.23	19154.71	WALK MID
6002	20359.80	19170.28	WALK PT
6003	20426.49	19235.67	WALK PC
6004	20479.78	19247.40	WALK MID
6005	20513.67	19204.62	WALK PRC
6006	20518.17	19191.07	WALK MID
6007	20527.80	19180.52	WALK PRC
6008	20544.82	19164.08	WALK MID
6009	20556.36	19143.42	WALK PT

Point Table			
Point #	Northing	Easting	Description
6010	20618.79	18979.04	WALK PC
6011	20621.89	18895.95	WALK MID
6012	20573.97	18827.99	WALK PT
6013	20397.02	18698.75	WALK PC
6014	20381.88	18693.94	WALK MID
6015	20366.90	18699.22	WALK PT
6016	20364.75	18700.90	WALK PC
6017	20351.30	18717.47	WALK MID
6018	20346.46	18738.25	WALK PT
7000	20258.47	19963.59	SWS 1 0+11 FES
7001	20189.08	19816.78	SWS 1 1+73 CENTER INLET
7002	20188.31	19814.76	SWS 1 1+75 INSIDE FACE
7003	20197.66	19811.21	SWS 1 1+75 10' OS RIGHT
7004	20178.96	19818.31	SWS 1 1+75 10' OS LEFT
7005	20360.88	19017.84	SWS 2 0+00 FES

Point Table			
Point #	Northing	Easting	Description
7006	20196.81	19015.97	SWS 2 1+64 INSIDE FACE
7007	20158.07	19029.60	SWS 2 2+04 INSIDE FACE
7008	20157.60	19019.59	SWS 2 2+04 10' OS RIGHT
7009	20158.65	19039.57	SWS 2 2+04 10' OS LEFT
7010	20156.58	19029.68	SWS 2 2+06 CENTER INLET

BY	DESCRIPTION	DATE	REV.



CITY OF WICHITA
 WICHITA, KANSAS
 CLEAR CREEK ADDITION
 PAVING & DRAINAGE

**COORDINATE
 MAP**

JOB NO.: 20T41005
 DATE: MAR 2021
 DESIGNED BY: EJJ
 DRAWN BY: CDJ

BAR IS ONE INCH ON ORIGINAL DRAWING
 IF NOT ONE INCH ON THIS SHEET, ADJUST SCALES ACCORDINGLY.

DRAWING NUMBER

File: L:\2020\20T41005 - Clear Creek Ph 6 Drawings\C3D\PAVING\COORDINATE_MAP.dwg Last Save: 3/1/2021 1:14 PM Last saved by: CDJurey
 Last plotted by: Jurey, Caleb D Plot Date: 3/4/2021 8:43 AM Plotter used: None