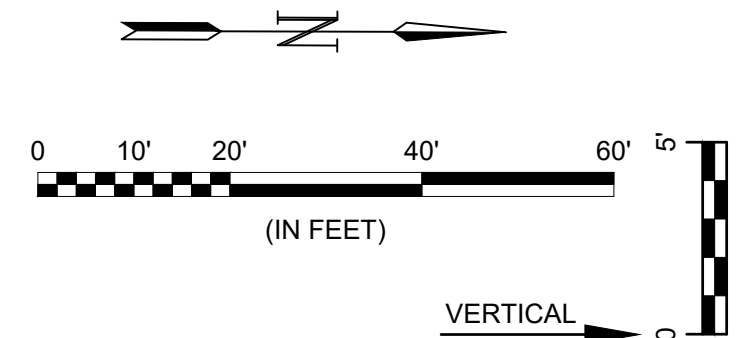
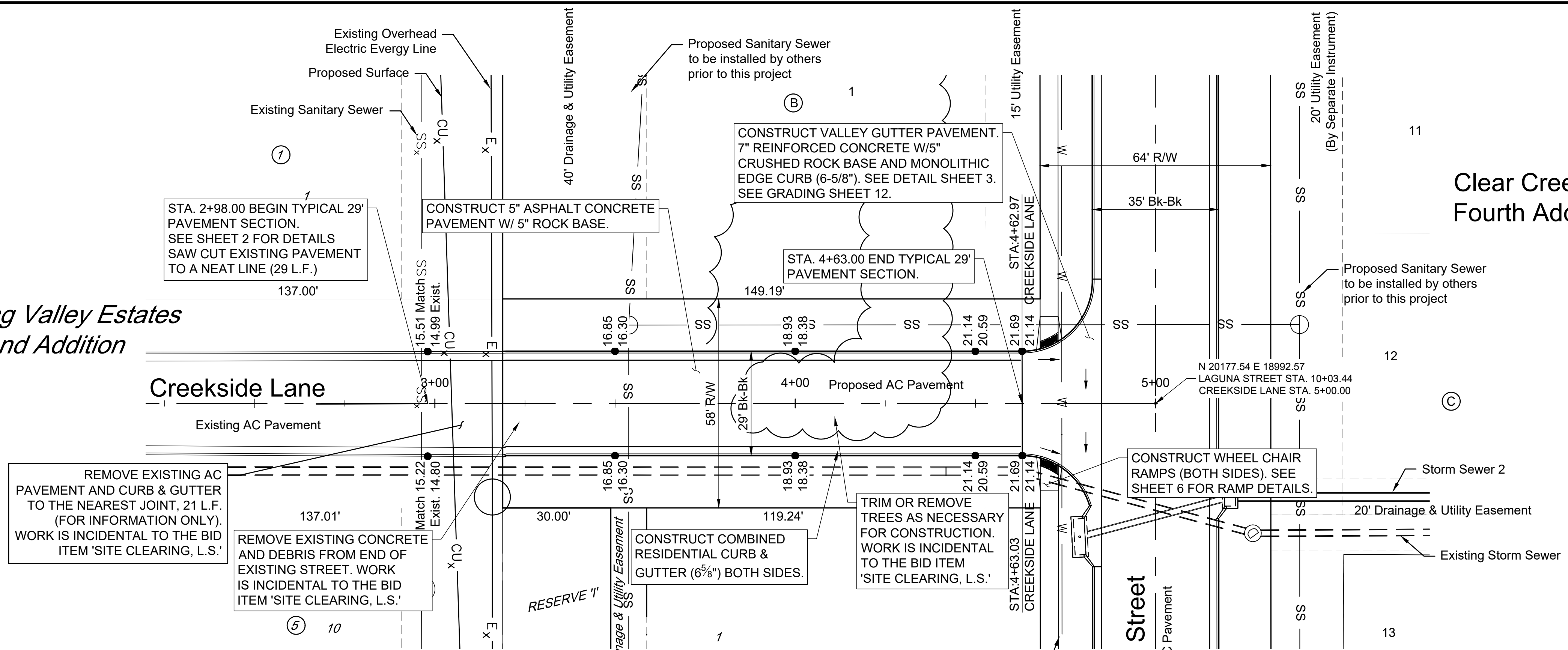


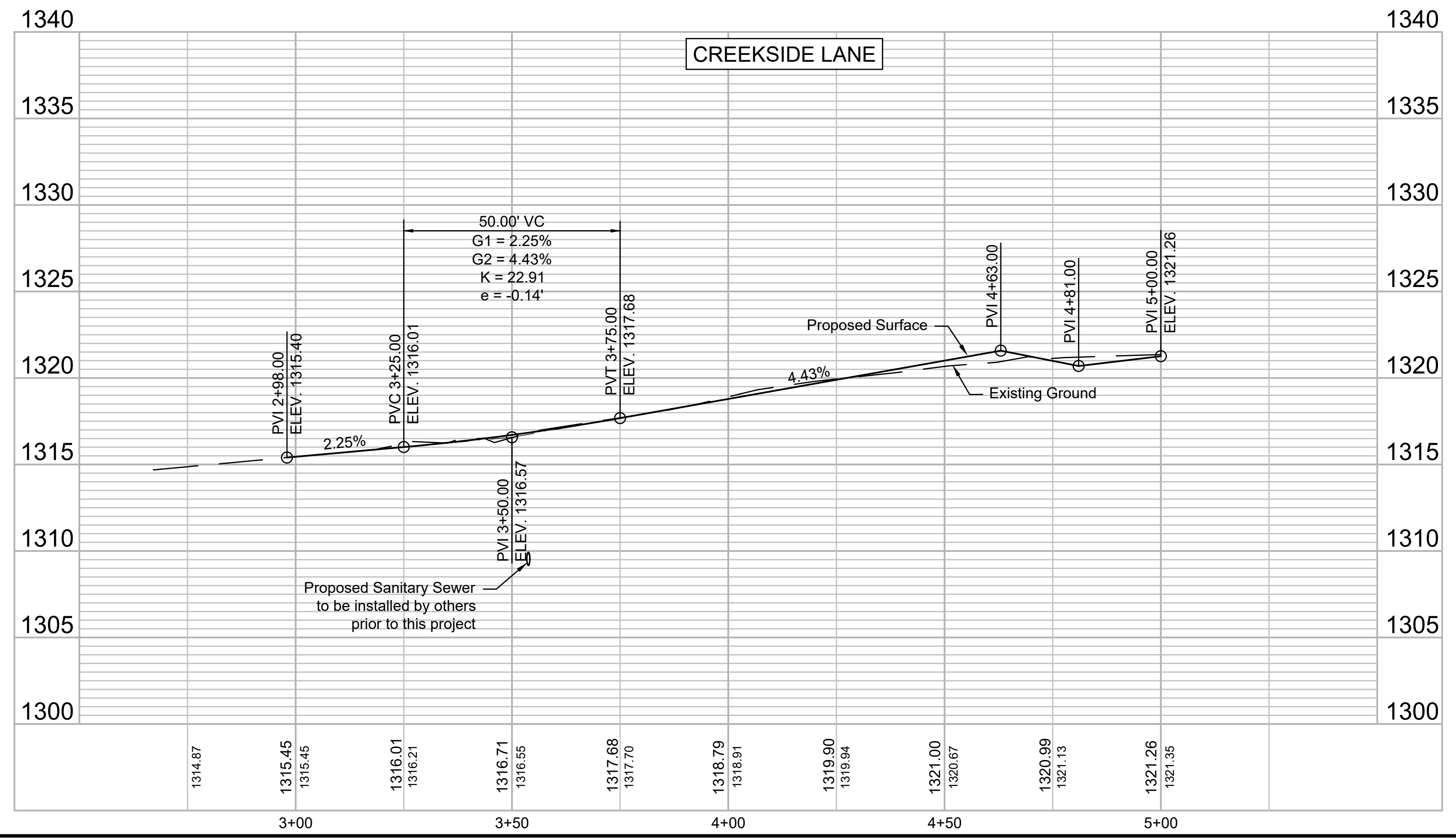


© 2021 GARVER, LLC
 THIS DOCUMENT, ALONG WITH THE IDEAS AND DESIGNS CONVEYED HEREIN, SHALL BE CONSIDERED INSTRUMENTS OF PROFESSIONAL SERVICE AND ARE PROPERTY OF GARVER, LLC. ANY USE, REPRODUCTION, OR DISTRIBUTION OF THIS DOCUMENT, ALONG WITH THE IDEAS AND DESIGN CONTAINED HEREIN, IS PROHIBITED UNLESS AUTHORIZED IN WRITING BY GARVER, LLC OR EXPLICITLY ALLOWED IN THE GOVERNING PROFESSIONAL SERVICES AGREEMENT FOR THIS WORK.

Spring Valley Estates
 Second Addition



- Notes:
1. Outside edge of sidewalk shall be 0.3' above Full Height Curb.
 2. Curb from Sta:3+50 to Sta:3+70 shall be zero height, both sides. A 1.0' distance to transition between full height and zero height curb shall be added to the ends of the station range.
 3. Add 1300.00 to all elevations shown to obtain actual elevations.
 4. Adjust pavement grading sections from Sta:4+25.00 to Sta:4+62.50 to accommodate a half-crown at the valley gutter connection.



| REV. | DATE | DESCRIPTION | BY |
|------|------|-------------|----|
| | | | |
| | | | |



CITY OF WICHITA
 WICHITA, KANSAS
 CLEAR CREEK ADDITION
 PAVING & DRAINAGE

CREEKSIDE LANE

JOB NO.: 20T41005
 DATE: MAR 2021
 DESIGNED BY: EJJ
 DRAWN BY: CDJ

BAR IS ONE INCH ON ORIGINAL DRAWING
 IF NOT ONE INCH ON THIS SHEET, ADJUST SCALES ACCORDINGLY.

DRAWING NUMBER

File: L:\2020\20T41005 - Clear Creek Ph 6 Drawings\C3D\PAVING\CREEKSIDE LANE.dwg Last Save: 3/1/2021 1:14 PM Last saved by: CDJurey
 Last plotted by: Jurey, Caleb D. Plot Style: --- Plot Scale: 1:2,584.9 Plot Date: 3/4/2021 8:24 AM Plotter used: None