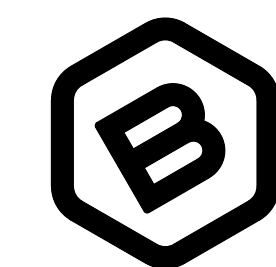
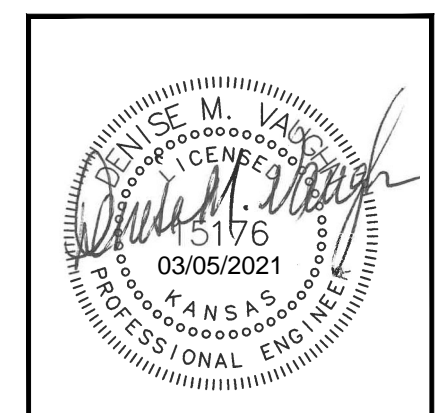
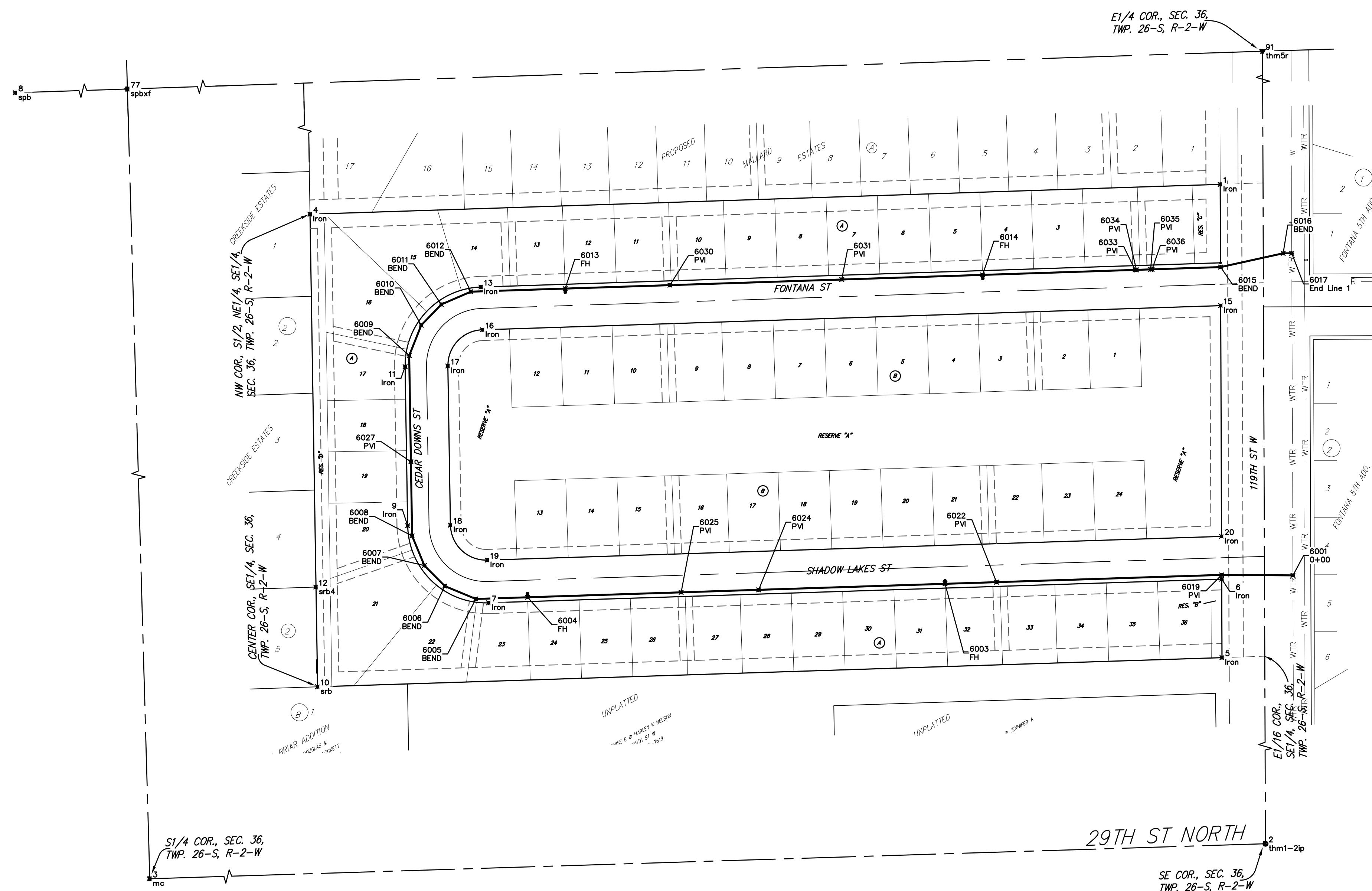
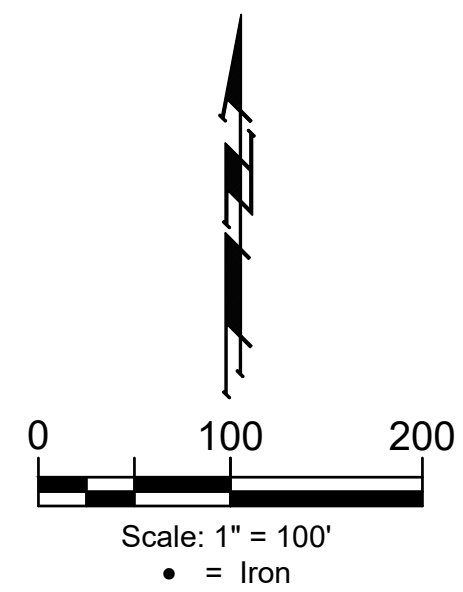


BENCHMARK #1
 Railroad Spike in Northeast Face of
 Power Pole, 31.1' Southwest of #5
 Rebar on 50' R/W South, 22'± West of
 Northwest Cor. of Asphalt Drive, 16.3'
 West & 16.7' South of Southeast Cor.,
 Reserve "B", Oasis Addition.
 Elev. = 1359.87 NAVD88

BENCHMARK #2
 Chiseled "crowfoot" on North Side of
 Concrete Slab on North Side of Fontana
 as Dedicated in Fontana 5th Between
 Concrete End Sections of Two
 Reinforced Concrete Pipes, 30.1' East to
 Northwest Cor. of Curved Masonry Wall
 Entry Monument on North Side of Said
 Fontana & 27.4' South to North Line
 of Back of Curb of Said Fontana
 Looking East.
 Elev. = 1359.80 NAVD88

WTR POINTS			
Point #	Northing	Easting	Description
6001	1705076.67	1607044.77	0+00
6003	1705062.85	1606556.65	FH
6004	1705043.94	1605970.95	FH
6005	1705041.60	1605888.33	BEND
6006	1705059.72	1605854.75	BEND
6007	1705088.46	1605826.10	BEND
6008	1705130.15	1605808.89	BEND
6009	1705382.98	1605804.83	BEND
6010	1705425.57	1605821.68	BEND
6011	1705454.72	1605849.91	BEND
6012	1705472.66	1605891.33	BEND
6013	1705476.99	1606023.60	FH
6014	1705496.19	1606009.28	FH
6015	1705507.14	1606943.34	BEND
6016	1705526.44	1607031.09	BEND
6017	1705526.49	1607043.09	End Line 1
6019	1705075.38	1606944.77	PVI
6022	1705065.18	1606628.82	PVI
6024	1705054.41	1606295.11	PVI
6025	1705050.90	1606186.37	PVI
6027	1705234.06	1605807.22	PVI
6030	1705491.81	1606170.66	PVI
6031	1705489.71	1606411.74	PVI
6033	1705503.20	1606823.20	PVI
6034	1705503.26	1606825.17	PVI
6035	1705503.92	1606845.16	PVI
6036	1705503.98	1606847.13	PVI

CONTROL POINTS			
Point #	Northing	Easting	Description
1	1705623.18	1606942.73	Iron
2	1703633.41	1607010.13	thm1-2ip
3	1703551.61	1604385.06	mc
4	1705581.32	1605865.63	Iron
5	1704959.33	1606945.20	Iron
6	1705069.38	1606944.79	Iron
7	1705036.17	1605916.20	Iron
8	1706111.89	1601685.12	spb
9	1705144.35	1605802.66	Iron
10	1704918.45	1605676.24	srb
11	1705367.42	1605799.08	Iron
12	1705058.33	1605673.82	srb4
13	1705479.12	1605905.46	Iron
15	1705453.11	1606943.36	Iron
16	1705419.16	1605907.43	Iron
17	1705368.38	1605859.07	Iron
18	1705145.31	1605862.66	Iron
19	1705096.14	1605914.26	Iron
20	1705129.40	1606944.57	Iron
77	1706199.39	1604309.95	spbxf
91	1706289.06	1607000.26	thm5r



**BAUGHMAN
 COMPANY**

315 Ellis St.
 Wichita, KS 67211
 316-262-7271
 BaughmanCo.com

Oasis Addition

COORDINATES

Water Distribution System

PROJECT NUMBER:
 448-2020-017101

DESIGN: DMV DRAWN: JAK

DATE: Mar. 11, 2021

SHEET OF
15 16