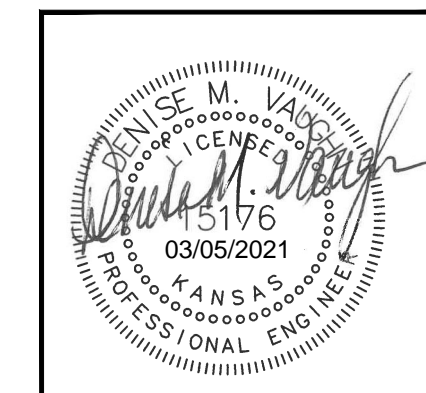
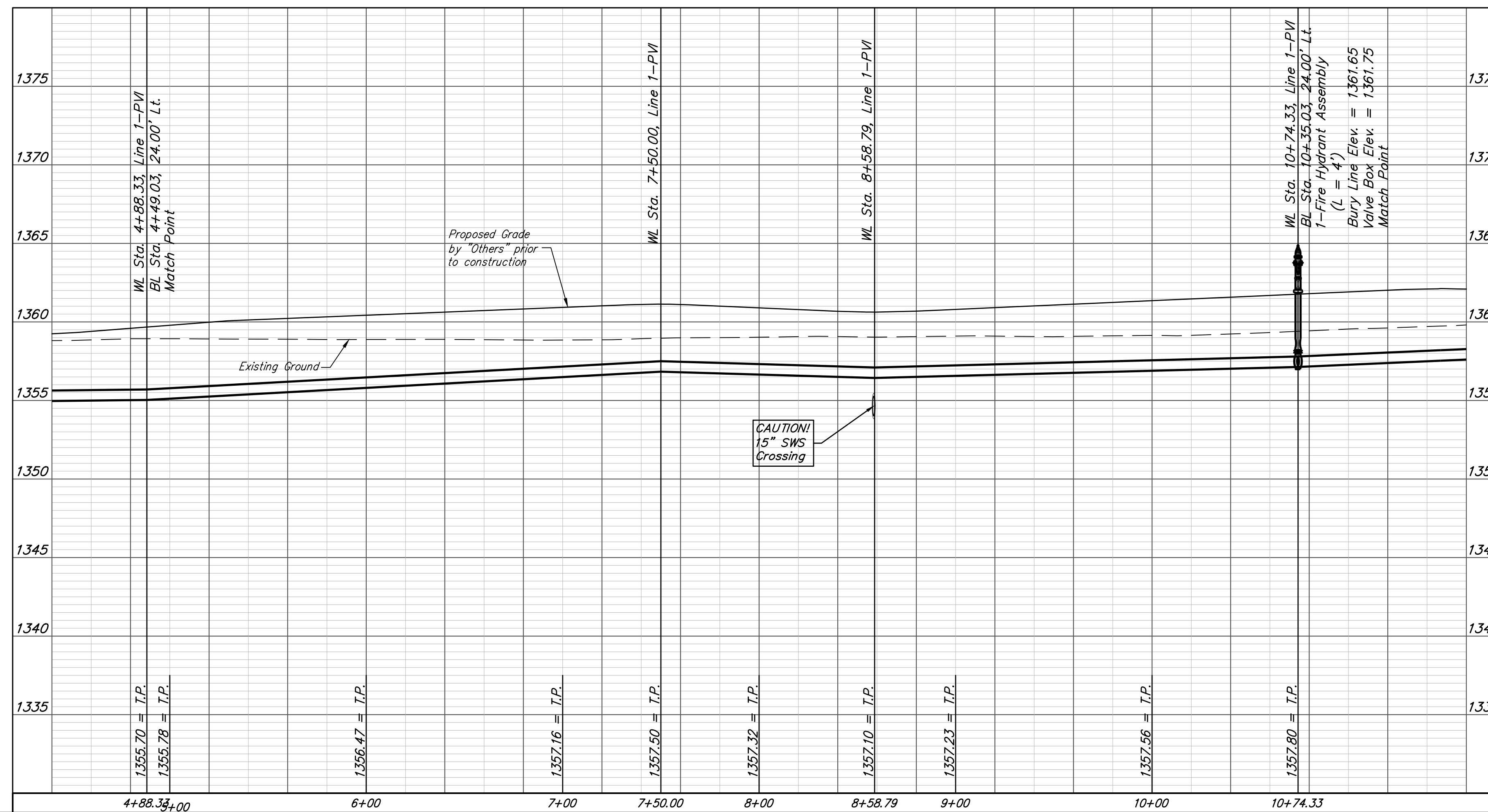
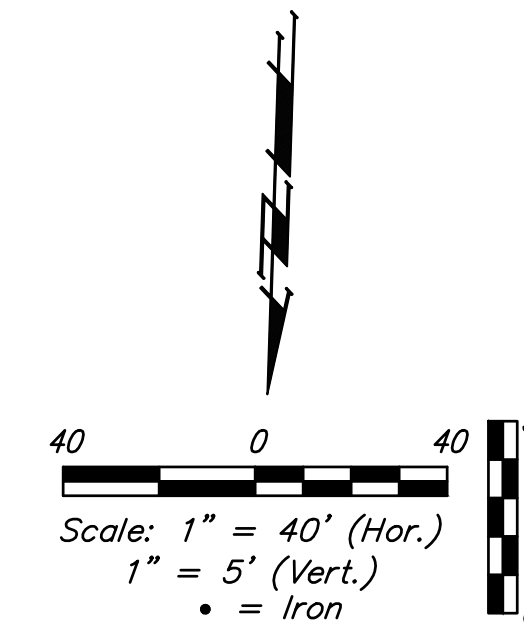
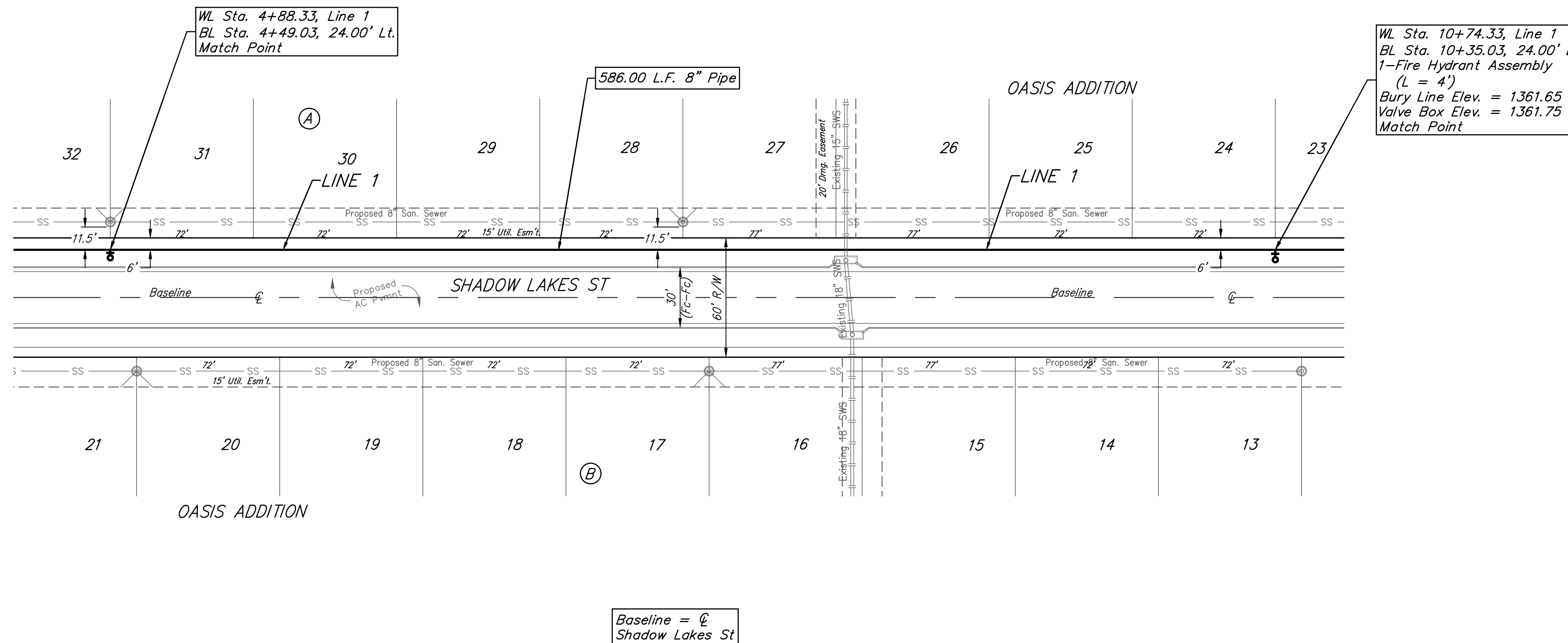


**BENCHMARK #1**  
 Railroad Spike In Northeast Face of Power Pole, 31.1' Southwest of #5 Rebar on 50' R/W South, 22'± West of Northwest Cor. of Asphalt Drive, 16.3' West & 16.7' South of Southeast Cor., Reserve "B", Oasis Addition.  
 Elev. = 1359.87 NAVD88

**BENCHMARK #2**  
 Chiseled "crowfoot" on North Side of Concrete Slab on North Side of Fontana as Dedicated in Fontana 5th Between Concrete End Sections of Two Reinforced Concrete Pipes, 30.1' East to Northwest Cor. of Curved Masonry Wall Entry Monument on North Side of Said Fontana & 27.4' South to North Line of Back of Curb of Said Fontana Looking East.  
 Elev. = 1359.80 NAVD88



**BAUGHMAN COMPANY**  
 315 Ellis St.  
 Wichita, KS 67211  
 316-262-7271  
 BaughmanCo.com

Oasis Addition  
**LINE 1**  
 Water Distribution System  
 PROJECT NUMBER:  
 448-2020-017101  
 DESIGN: DMV DRAWN: JAK  
 DATE: Mar. 11, 2021  
 SHEET OF  
**5 16**

File: E:\Projects\Oasis Addition\_1\Engineering\Phase 1\WTR\_20-08-E654\WTR PLANS.dwg