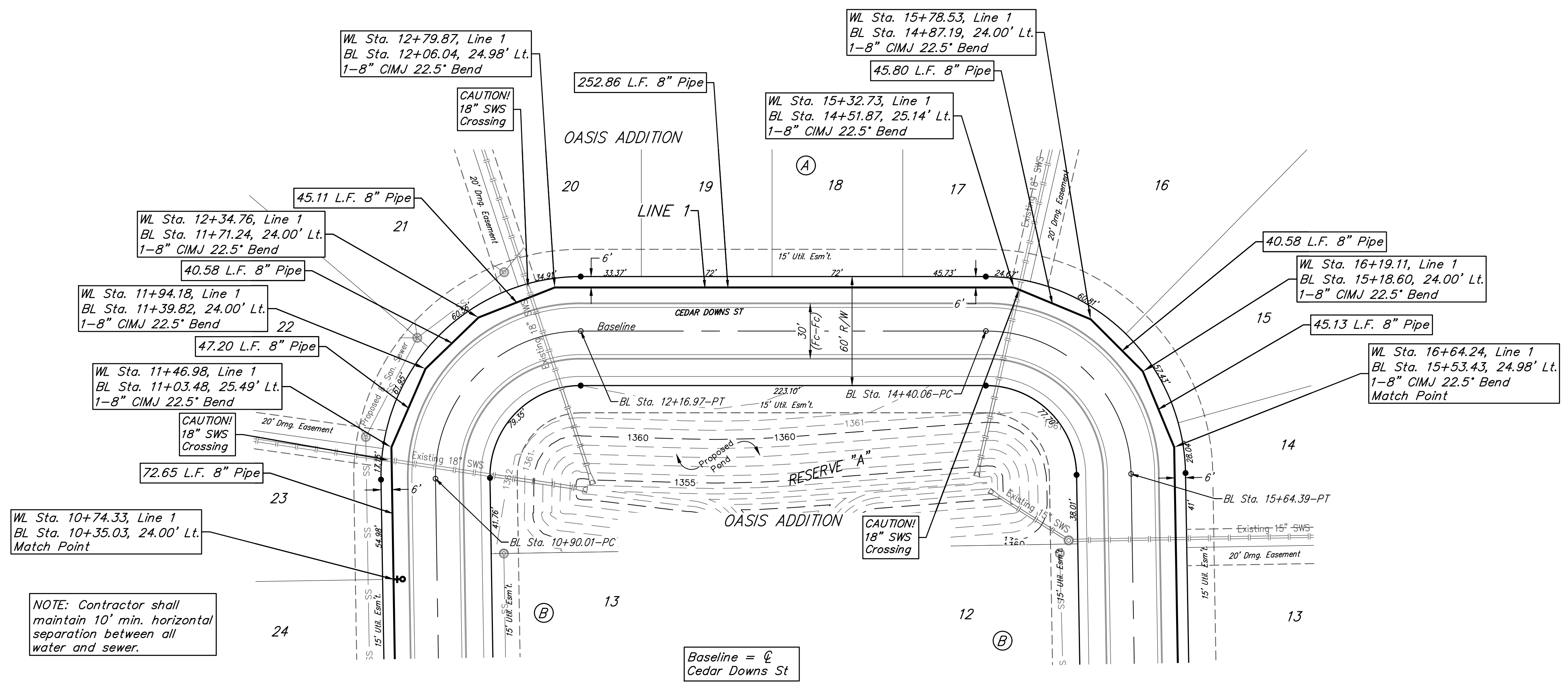
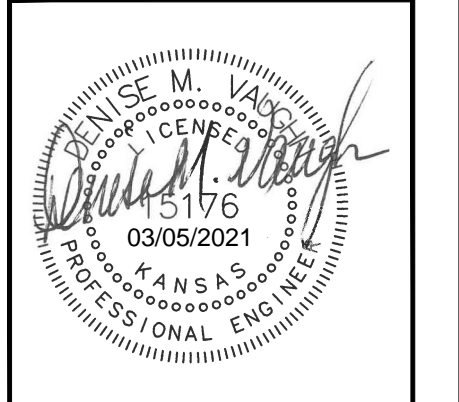
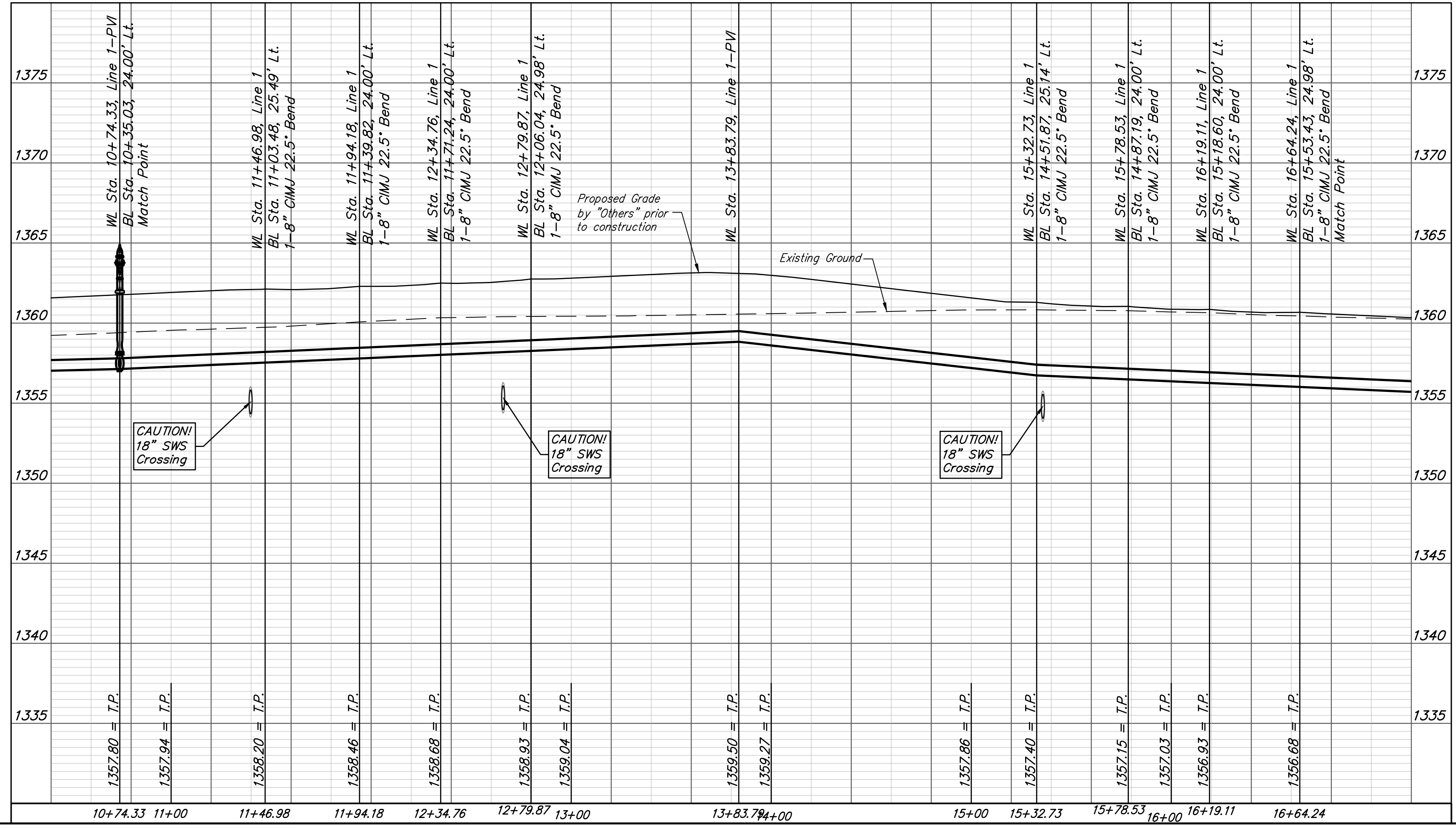
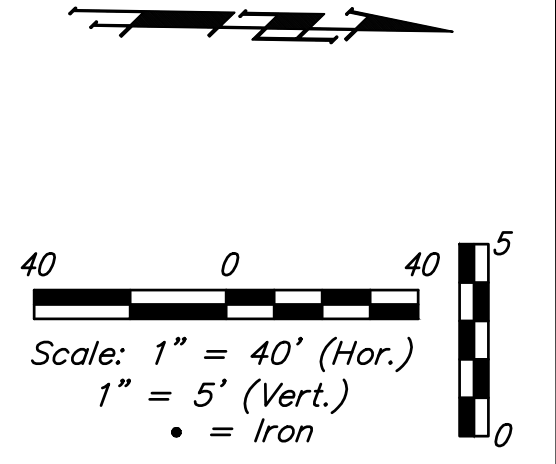


BENCHMARK #1
 Railroad Spike In Northeast Face of
 Power Pole, 31.1' Southwest of #5
 Rebar on 50' R/W South, 22'± West of
 Northwest Cor. of Asphalt Drive, 16.3'
 West & 16.7' South of Southeast Cor.,
 Reserve "B", Oasis Addition.
 Elev. = 1359.87 NAVD88

BENCHMARK #2
 Chiseled "crowfoot" on North Side of
 Concrete Slab on North Side of Fontana
 as Dedicated in Fontana 5th Between
 Concrete End Sections of Two
 Reinforced Concrete Pipes, 30.1' East to
 Northwest Cor. of Curved Masonry Wall
 Entry Monument on North Side of Said
 Fontana & 27.4' South to North Line
 of Back of Curb of Said Fontana
 Looking East.
 Elev. = 1359.80 NAVD88



NOTE: Contractor shall maintain 10' min. horizontal separation between all water and sewer.



BAUGHMAN COMPANY
 315 Ellis St.
 Wichita, KS 67211
 316-262-7271
 BaughmanCo.com

Oasis Addition
LINE 1
 Water Distribution System
 PROJECT NUMBER:
 448-2020-017101
 DESIGN: DMV DRAWN: JAK
 DATE: Mar. 11, 2021
 SHEET **6** OF **16**

File: E:\Projects\Oasis Addition_1\Engineering\Phase 1\WTR_20-08-E654\WTR PLANS.dwg