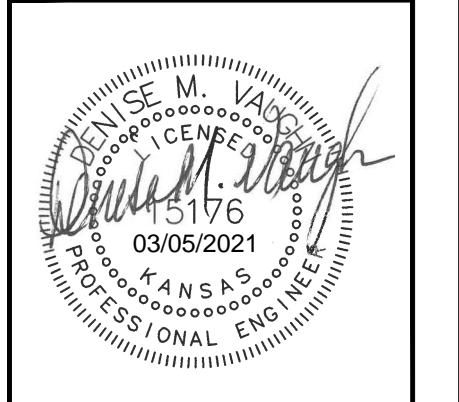
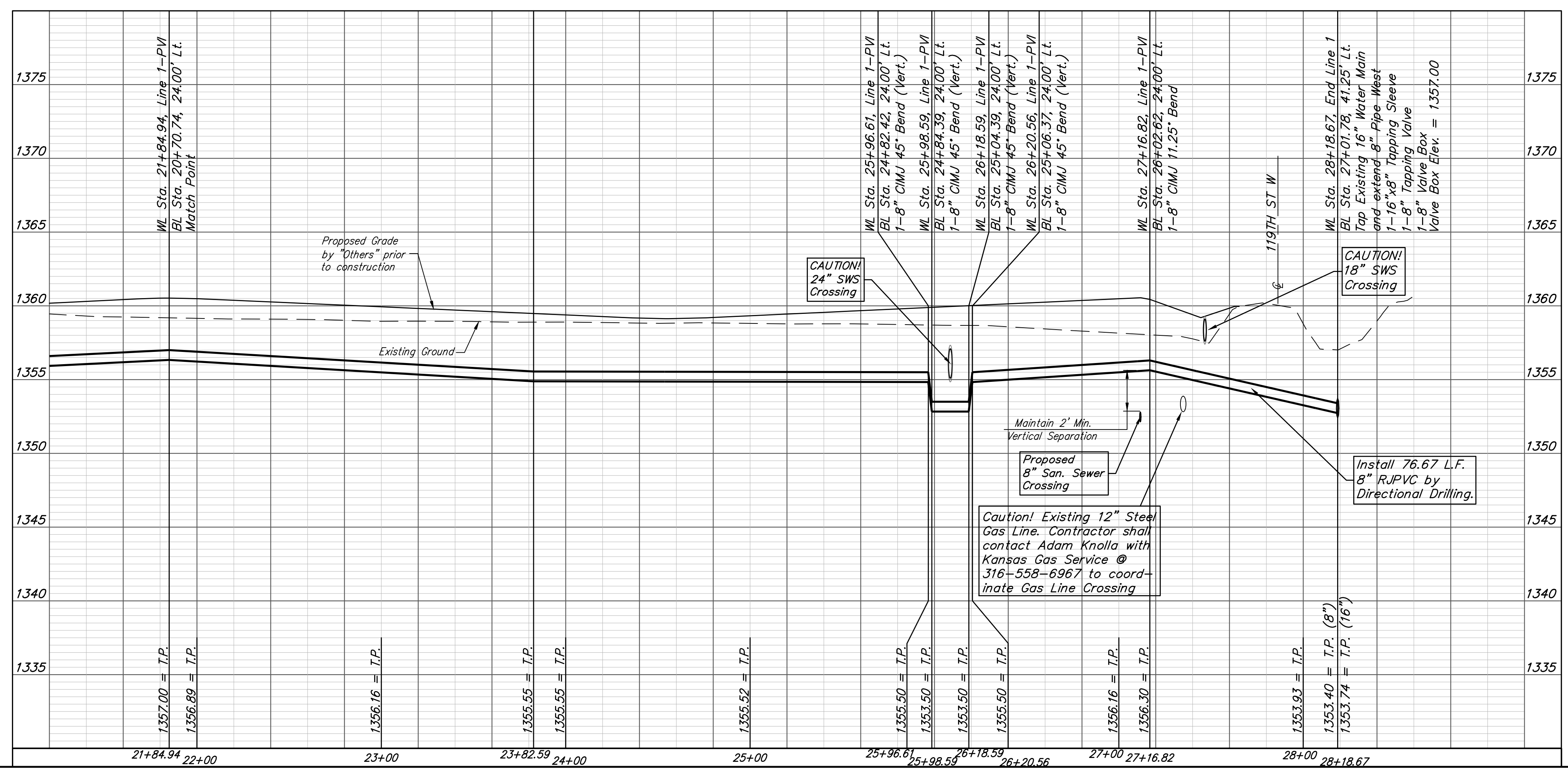
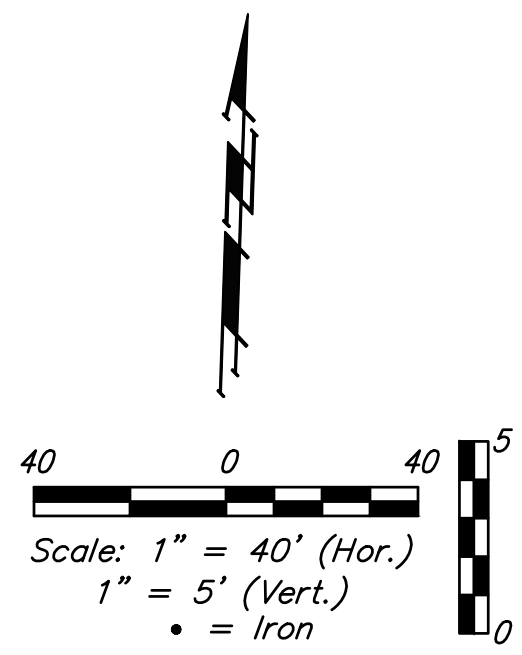
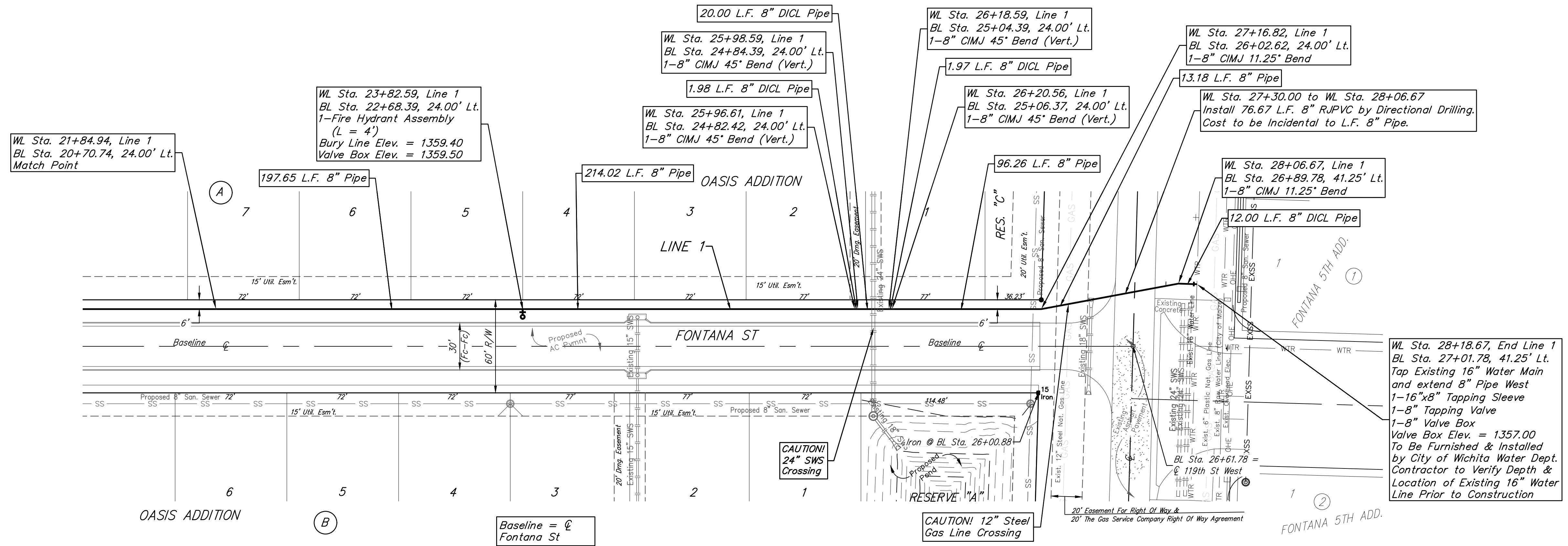


BENCHMARK #1
 Railroad Spike In Northeast Face of Power Pole, 31.1' Southwest of #5 Rebar on 50' R/W South, 22'± West of Northwest Cor. of Asphalt Drive, 16.3' West & 16.7' South of Southeast Cor., Reserve "B", Oasis Addition.
 Elev. = 1359.87 NAVD88

BENCHMARK #2
 Chiseled "crowfoot" on North Side of Concrete Slab on North Side of Fontana as Dedicated in Fontana 5th Between Concrete End Sections of Two Reinforced Concrete Pipes, 30.1' East to Northwest Cor. of Curved Masonry Wall Entry Monument on North Side of Said Fontana & 27.4' South to North Line of Back of Curb of Said Fontana Looking East.
 Elev. = 1359.80 NAVD88



BAUGHMAN COMPANY
 315 Ellis St.
 Wichita, KS 67211
 316-262-7271
 BaughmanCo.com

Oasis Addition

LINE 1

Water Distribution System

PROJECT NUMBER:
448-2020-017101

DESIGN: DMV DRAWN: JAK

DATE: Mar. 11, 2021

SHEET OF
8 16

File: E:\Projects\Oasis Addition_1\Engineering\Phase 1\WTR_20-08-E654\WTR PLANS.dwg