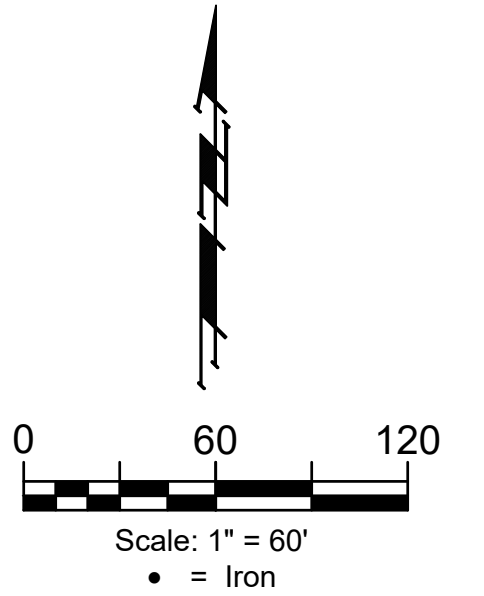


BENCHMARK #1
 Railroad Spike In Northeast Face of
 Power Pole, 31.1' Southwest of #5
 Rebar on 50' R/W South, 22± West of
 Northwest Cor. of Asphalt Drive, 16.3'
 West & 16.7' South of Southeast Cor.,
 Reserve "B", Oasis Addition.
 Elev. = 1359.87 NAVD88

BENCHMARK #2
 Chiseled "crowfoot" on North Side of
 Concrete Slab on North Side of Fontana
 as Dedicated in Fontana 5th Between
 Concrete End Sections of Two
 Reinforced Concrete Pipes, 30.1' East to
 Northwest Cor. of Curved Masonry Wall
 Entry Monument on North Side of Said
 Fontana & 27.4' South to North Line
 of Back of Curb of Said Fontana
 Looking East.
 Elev. = 1359.80 NAVD88

EROSION CONTROL MEASURE	INSTALL	MAINTAIN
CONSTRUCTION ENTRANCE (EA)	0	1
SILT FENCE (LF)	0	544
CURB INLET PROTECTION (EA)	0	8
DROP INLET PROTECTION (EA)	0	0
MAINTAIN EROSION CONTROL BMP's (LS)	0	1

* ALL EXISTING BMPs INCLUDING CONSTRUCTION ENTRANCE, SEDIMENT BARRIERS, SILT FENCE, CUT-OFF TRENCH, AND EROSION CONTROL MAT SHALL BE MAINTAINED AND REPAIRED IF NECESSARY.



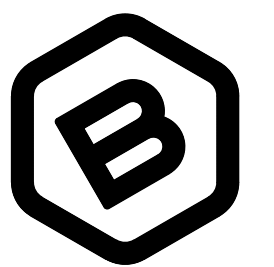
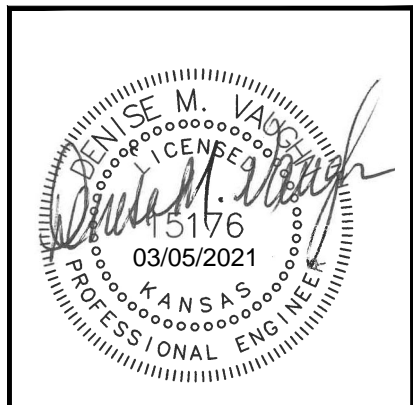
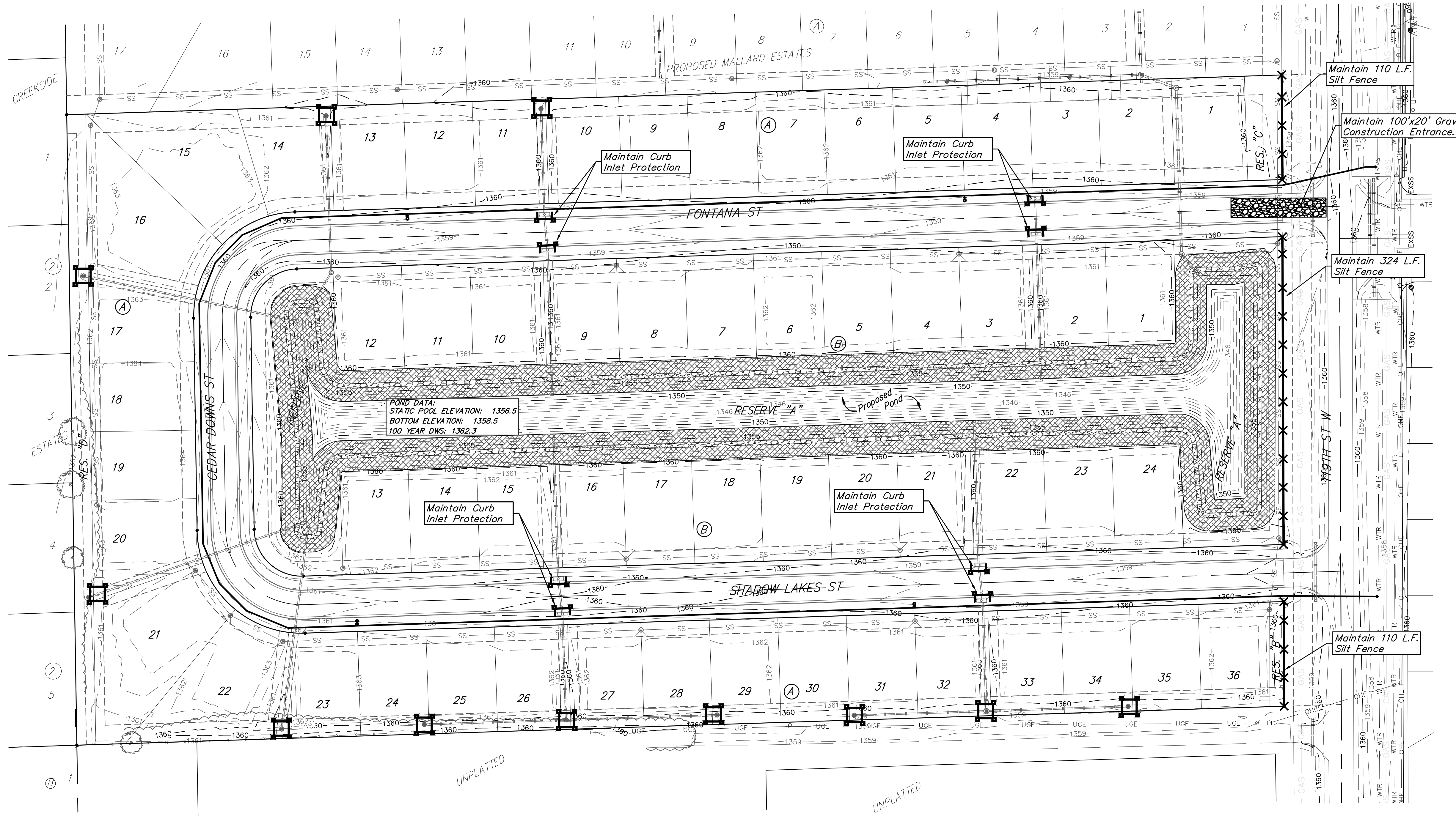
— 1364 — Proposed Grade prior to construction

EROSION CONTROL PLAN LEGEND

	- DROP INLET PROTECTION
	- CURB INLET PROTECTION
	- SILT FENCING
	- EROSION CONTROL MAT

NOTES:
 1. Contractor shall make sure all erosion control is in place before project is accepted. This plan represents the minimum standard. Any additional erosion control measures shall be installed by the Contractor as needed.

2. All areas disturbed during construction shall be seeded, mulched, and fertilized as per Cover Sheet General Notes.



BAUGHMAN COMPANY

315 Ellis St.
 Wichita, KS 67211
 316-262-7271
 BaughmanCo.com

Oasis Addition

EROSION CONTROL

Water Distribution System

PROJECT NUMBER:
 448-2020-017101

DESIGN: DMV DRAWN: JAK

DATE: Mar. 11, 2021

SHEET **9** OF **16**

File: E:\Projects\Oasis Addition_1\Engineering\Phase 1\WTR_20-06-E654\WTR PLANS.dwg