

# GENERAL NOTES:

- The Contractor shall comply with all applicable safety regulations. All construction shall be completed following current City Standard Specifications and Special Provisions.
- Contractor will be required to provide notice to utility companies a minimum of seventy-two (72) hours prior to any excavation, as follows:  
  
Kansas One-Call 687-2470  
  
The Contractor must notify the following in case of an emergency:  
  
AT&T 1-800-246-8464  
Black Hills Energy 1-800-694-8989  
City of Wichita Water & Sewer 1-316-219-8921  
City of Wichita Stormwater 1-316-268-4090  
City of Wichita Traffic 1-316-268-4034  
Cox Communications 1-888-249-3530  
Kansas Gas Service 1-888-482-4950  
Energry 1-800-544-4857
- Utility service lines, poles, etc. are to be adjusted as necessary by others prior to construction unless the plans specifically call for their adjustment by the Contractor or unless the plans specifically identify a utility to be adjusted by its owner during construction. Existing utilities and their location, as shown on the plans, represent the best information obtainable for design. The Contractor will be required to work around existing utilities within the right-of-way which do not conflict with proposed construction.
- Rubble from the removal of miscellaneous structures and excess excavation which is to be wasted shall be disposed of on sites to be provided by the Contractor. These sites shall be approved by the Engineer as to suitability, appearance and site location. Locations, in the opinion of the Engineer, that will leave an unsightly appearance will not be approved. All disposal sites must be approved by the Kansas Department of Health and Environment. Material either stockpiled or disposed of in a flood plain will require a Kansas State Board of Agriculture permit. Any material dumped in waters of the United States or wetlands is subject to U.S. Corps of Engineers permitting regulations. Any material buried or stockpiled beyond approved construction limits will require additional archaeological investigations unless buried in a previously approved borrow location.
- Trees and shrubs in public right-of-way which are in direct conflict with proposed new construction shall be removed by the Contractor with the City Engineer's approval. Trees and shrubs which are not in direct conflict with proposed new construction shall be saved and protected from damage.
- The Contractor shall give all property owners and/or tenants of developed property abutting the construction of this project a minimum of ten (10) days notice prior to start of construction.
- The Contractor shall be responsible for preserving property irons. The Contractor will be required to re-establish any property irons which are damaged or destroyed by his construction operations. Such irons shall be re-established by a licensed land surveyor in accordance with state laws.
- The Engineering Division shall field locate water valves one time during construction when requested by the Contractor. It shall be the Contractor's responsibility to preserve such field locations during the construction process. Water valves, valve boxes or fire hydrants damaged during construction shall be repaired by Contractor at his own expense. Valve boxes and water meters within the project limits shall be adjusted to match final grades by the contractor.
- If traffic will be impacted by construction, a traffic control plan must be submitted and approved by the City Traffic Engineer, Mike Armour at [traffic@wichita.gov](mailto:traffic@wichita.gov), before construction can begin. The Contractor shall be responsible for all traffic control measures to facilitate construction. All construction zone markings and signage shall conform to the latest version of the Manual on Uniform Traffic Control Devices (MUTCD) as published by the US Dept. of Transportation, Federal Highway Administration. All costs associated with construction markings and signage shall be the Contractors responsibility.
- All elevations shown are NAVD 88.
- All areas disturbed during construction that will not be under proposed pavement shall be restored to match existing conditions.

- A portion of excess excavated material shall be mounded around manholes which extend more than one (1) foot above the existing ground. Such mound shall be constructed with new development a six (6) foot diameter flat top with 4 to 1 side slopes down to the original ground. The elevation of the flat top of the mound shall be 0.4 foot below the top to the manhole.
- Contractor shall limit the extent of trench openings overnight and weekends to less than 50 feet
- The inspecting firm shall submit to the City Stormwater Maintenance Division a digital copy of the CCTV inspection of the conduits and structures following construction. The digital file format shall be compatible with the City input template. A copy of the template is available upon request at 316-268-4090.
- The Contractor shall protect from damage and support existing utilities through construction as approved by the utility owner and the Engineer at the contractors expense.

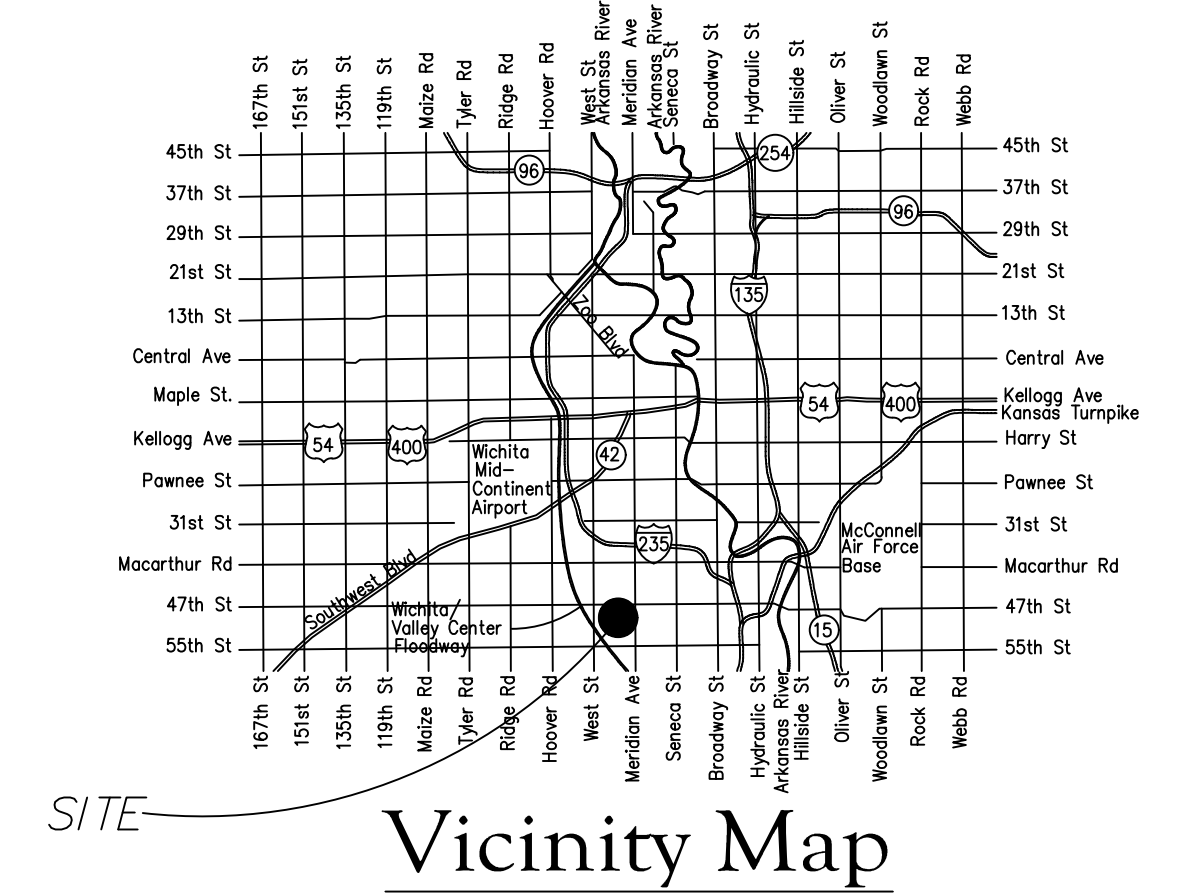
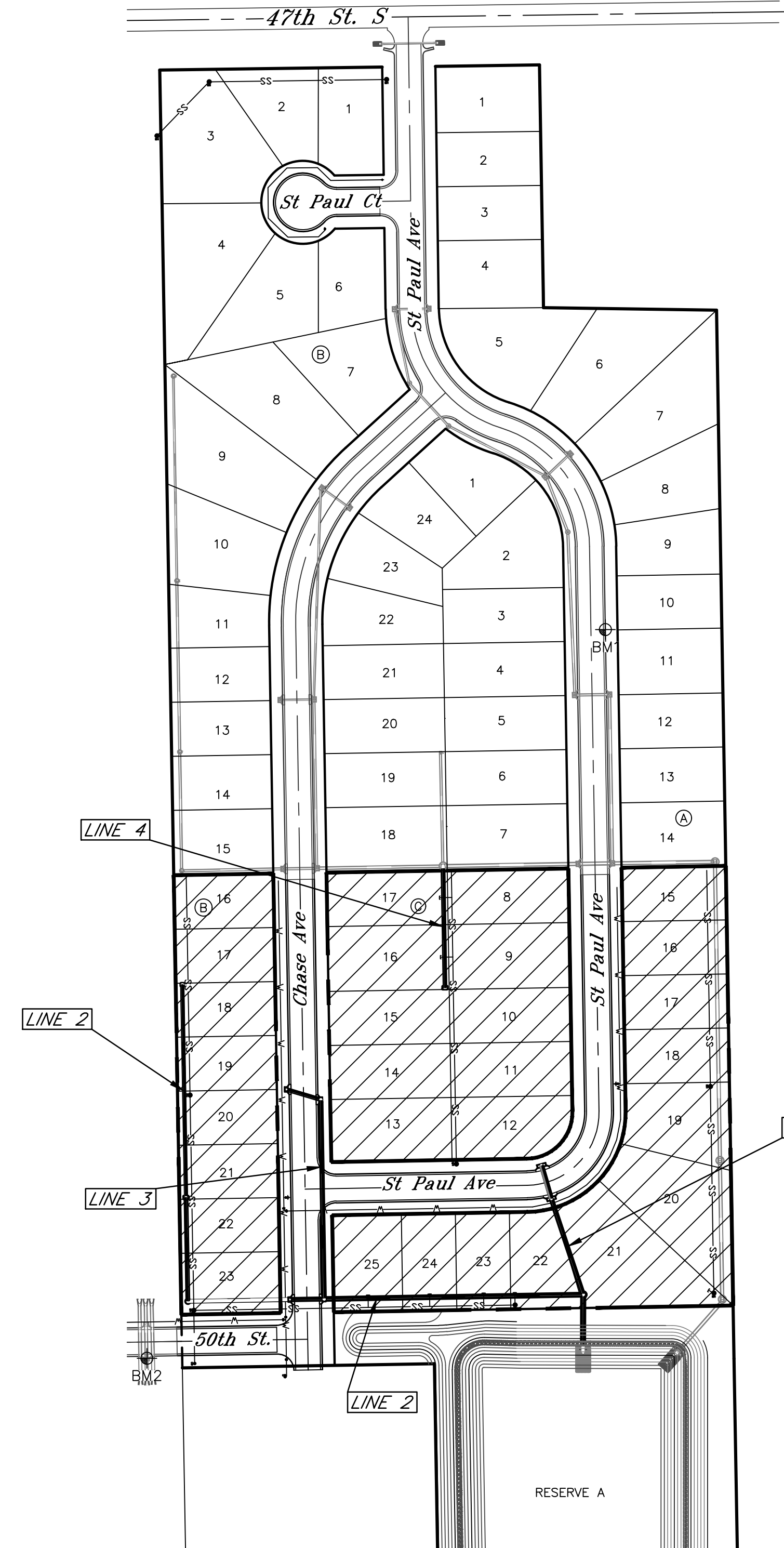
## Benchmarks

BM1:  
Chiseled "+" on East Curb of St. Paul Ave., Approx. 14.5 feet West of the SW Corner of Lot 10, Block A  
Elev. = 1277.49 (NAVD-88)

BM2:  
Chiseled "□" on Rim of Curb Inlet on South side of 50th St., Approx. 42.5 feet West & 11.5 feet North of the SW Corner of Fox Run Addition  
Elev. = 1275.55 (NAVD-88)

# STORM WATER SEWER #734 Fox Run Addition CITY OF WICHITA, KANSAS

Gary Janzen, P.E. City Engineer  
Project Number: 468-2020-085451  
OCA: 810131



## Sheet Index

- 1.0 Title Sheet
- 2.0 Control Map
- 2.1-2.4 SWS Inlet Details
- 3.0 Plan & Profile Line 1
- 3.1-3.2 Plan & Profile Line 2
- 3.3 Plan & Profile Line 3
- 3.4 Plan & Profile Line 4
- 4.0 Erosion Control Plan
- 4.1-4.5 Erosion Control Details
- 5.0 Copy of Plat



**Stormwater Certification:**

New Development or Redevelopment (Circle One)

Stormwater Permit # \_\_\_\_\_

NOI Permit # S-AR94-1491

These construction plans were prepared in accordance with the current Stormwater management Regulations as set forth in the City of Wichita's Stormwater Management Ordinance 16.32 and the policies/guidelines presented in the Wichita/Sedgwick County Stormwater Manual.

Site Area (Acres) = 37.71

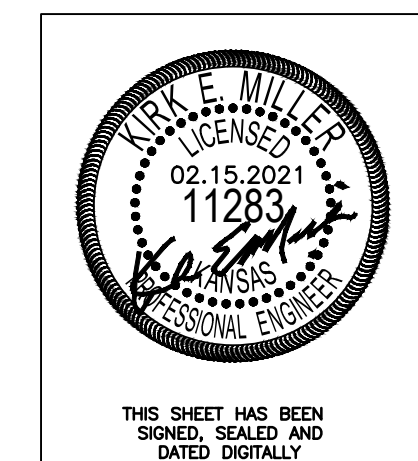
Disturbed Area (Acres) = 37.71

Water Quality Treatment: COW Off-Site BMP Program

Downstream Channel Protection: N/A

Detention: Existing Detention Pond

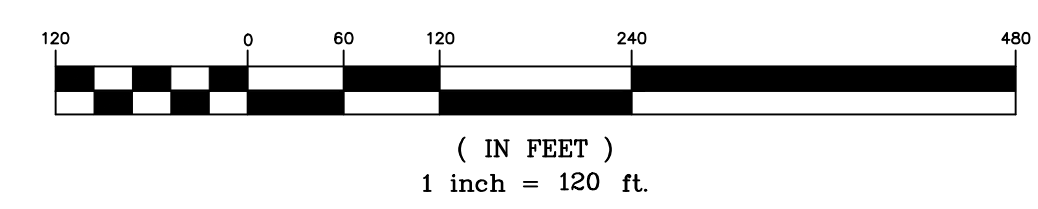
The BMP used for this development is COW Off-Site BMP Program



THIS SHEET HAS BEEN SIGNED, SEALED AND DATED DIGITALLY

**KEMILLER ENGINEERING PA**

117 E. Lewis, Wichita, KS 67202 (316)264-0242



February 2021

Developer: Superior Homes, LP  
1109 S Rock Road, Wichita, KS 67207-3317  
316-516-0139