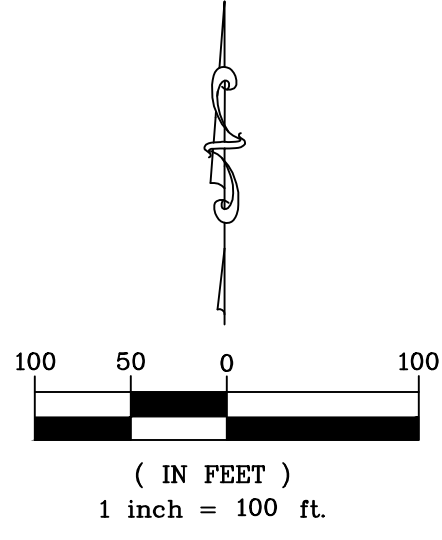


Fox Run Addition
Wichita, Sedgwick County, Kansas
 Part of the NE 1/4, Section 24, Township 28 South, Range 1 West

NW Corner NE 1/4,
 Sec. 24, T28S, R1W
 Sedg. Co. cap (found)

N. 1/16 Corner NE 1/4,
 Sec. 24, T28S, R1W

NE Corner NE 1/4,
 Sec. 24, T28S, R1W
 1/2" Rebar (found)

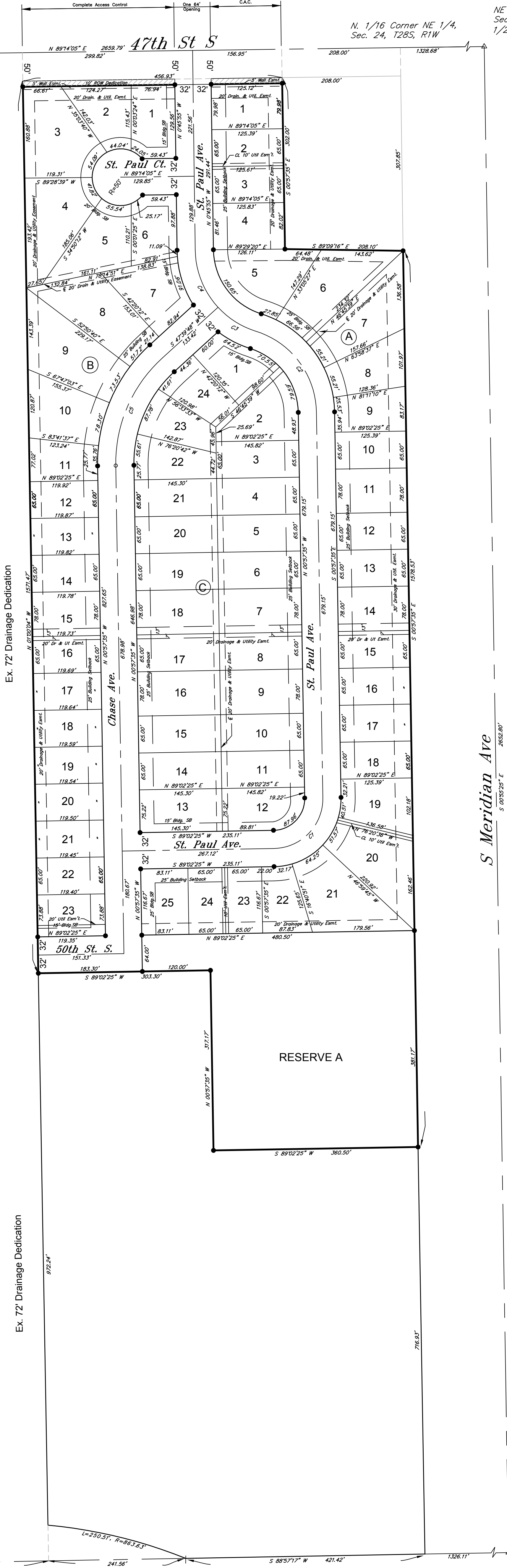


LEGEND

● 3/8" Rebar (set) KEMPA #157

St. Paul Ave.				
Number	Length	Radius	Line/Chord Direction	Ch. Dist
C1	138.23'	88.00'	N 44°02'25" E	124.45'
C2	190.31'	152.00'	N 36°49'38" W	178.12'
C3	79.74'	152.00'	N 57°39'53" W	78.83'
C4	111.08'	152.00'	N 21°42'01" W	108.63'

Chase Ave.				
Number	Length	Radius	Line/Chord Direction	Ch. Dist
C5	212.16'	250.00'	S 23°21'07" W	205.85'



SW Cor. NE 1/4,
 Sec. 24, T28S, R1W
 1/2" Rebar Boughman (found)

S. 1/16 Corner NE 1/4,
 Sec. 24, T28S, R1W

SE Corner NE 1/4,
 Sec. 24, T28S, R1W
 1/2" Rebar (found)

FOR
 REFERENCE
 ONLY

17063 XREF PLAT PHASE 1 8/03/2018

KEMILLER
 ENGINEERING PA

117 E. Lewis, Wichita, KS 67202 (316)264-0242