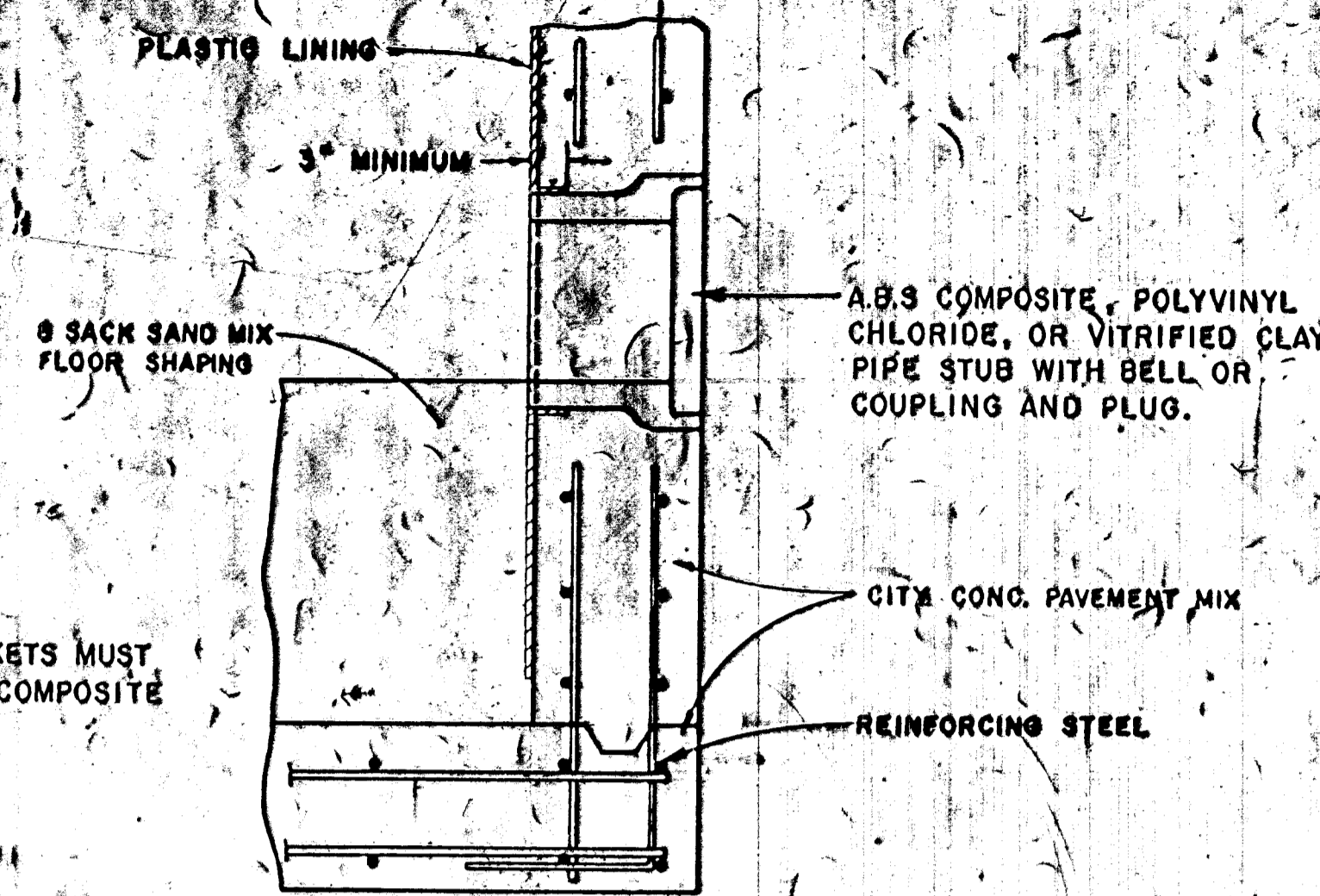


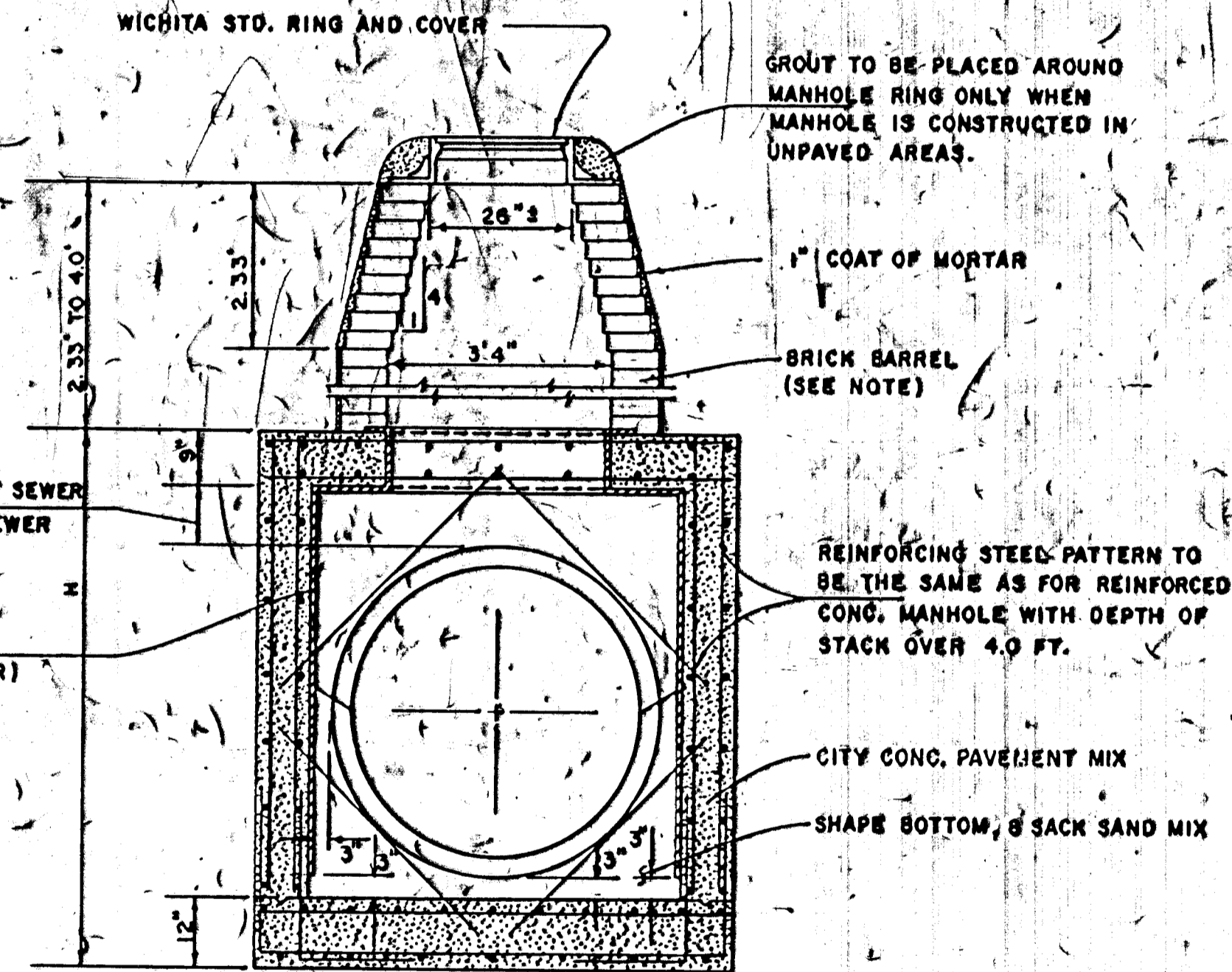
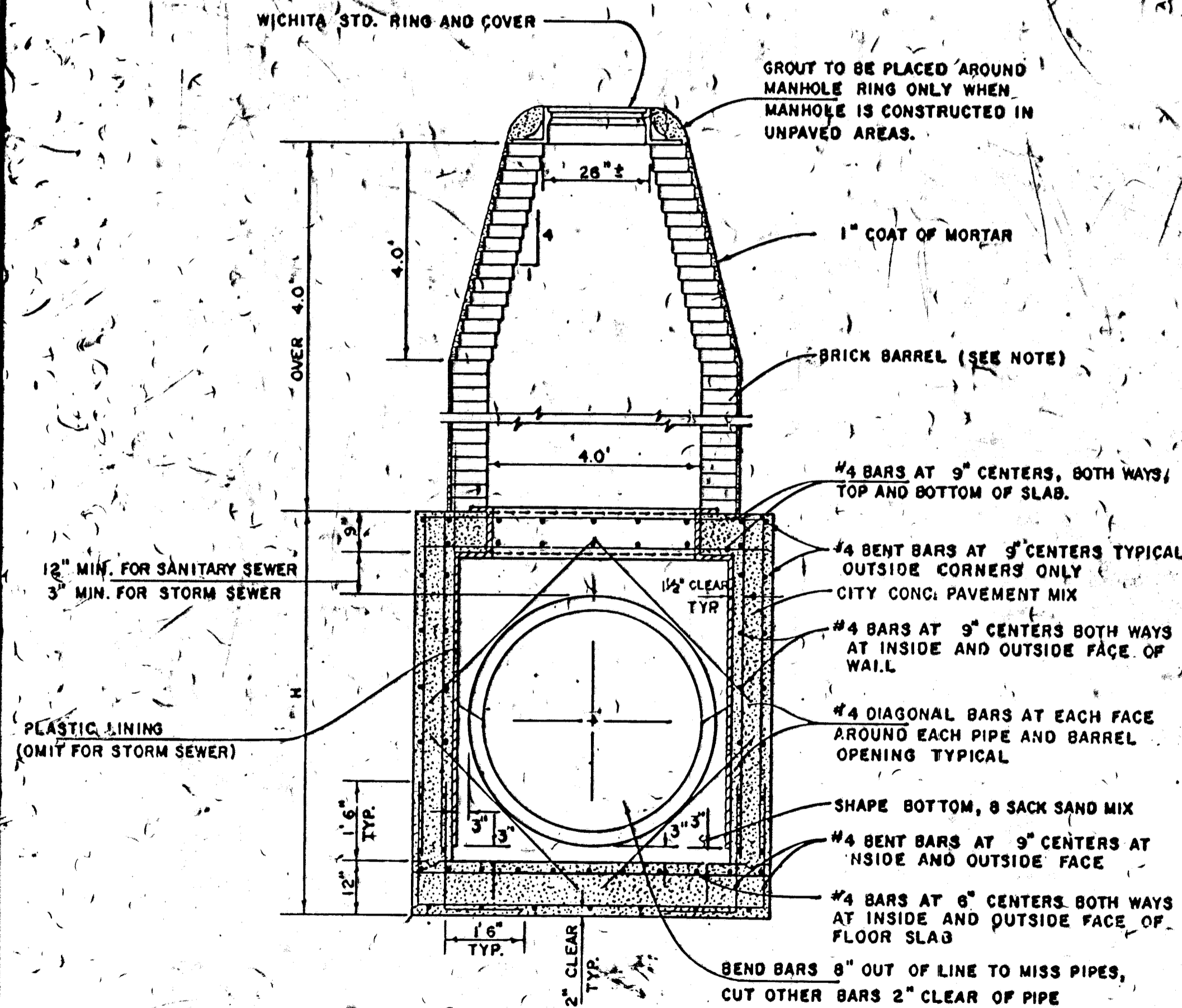
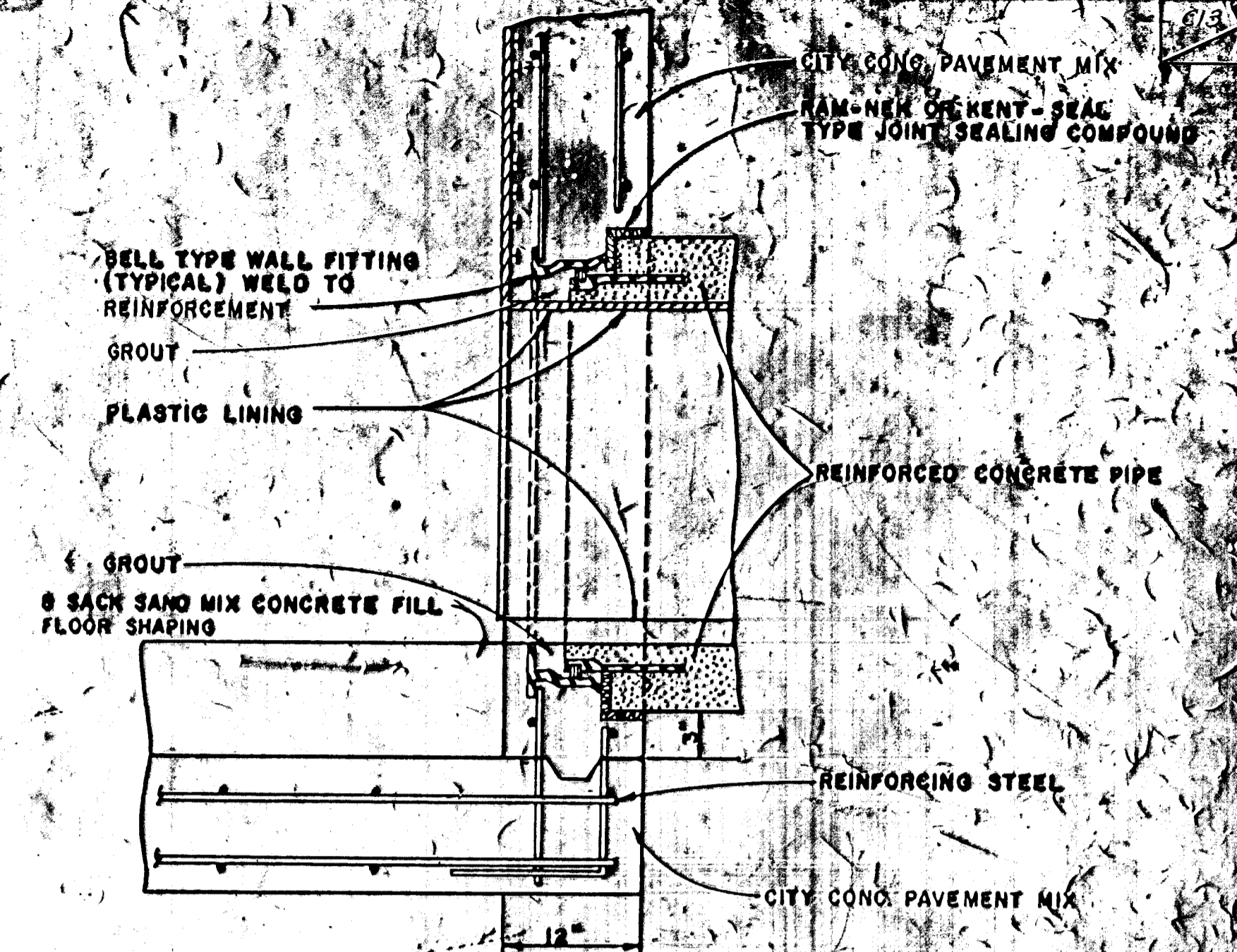
**REINFORCED CONCRETE MANHOLE**  
 DEPTH OF STACK: OVER 4.0'  
 SCALE 1" = 2'

NOTE: WATERSTOP GASKETS MUST BE USED WITH A.B.S. COMPOSITE OR P.V.C. PIPE.

**PIPE STUB DETAIL**  
**SANITARY SEWER ONLY**

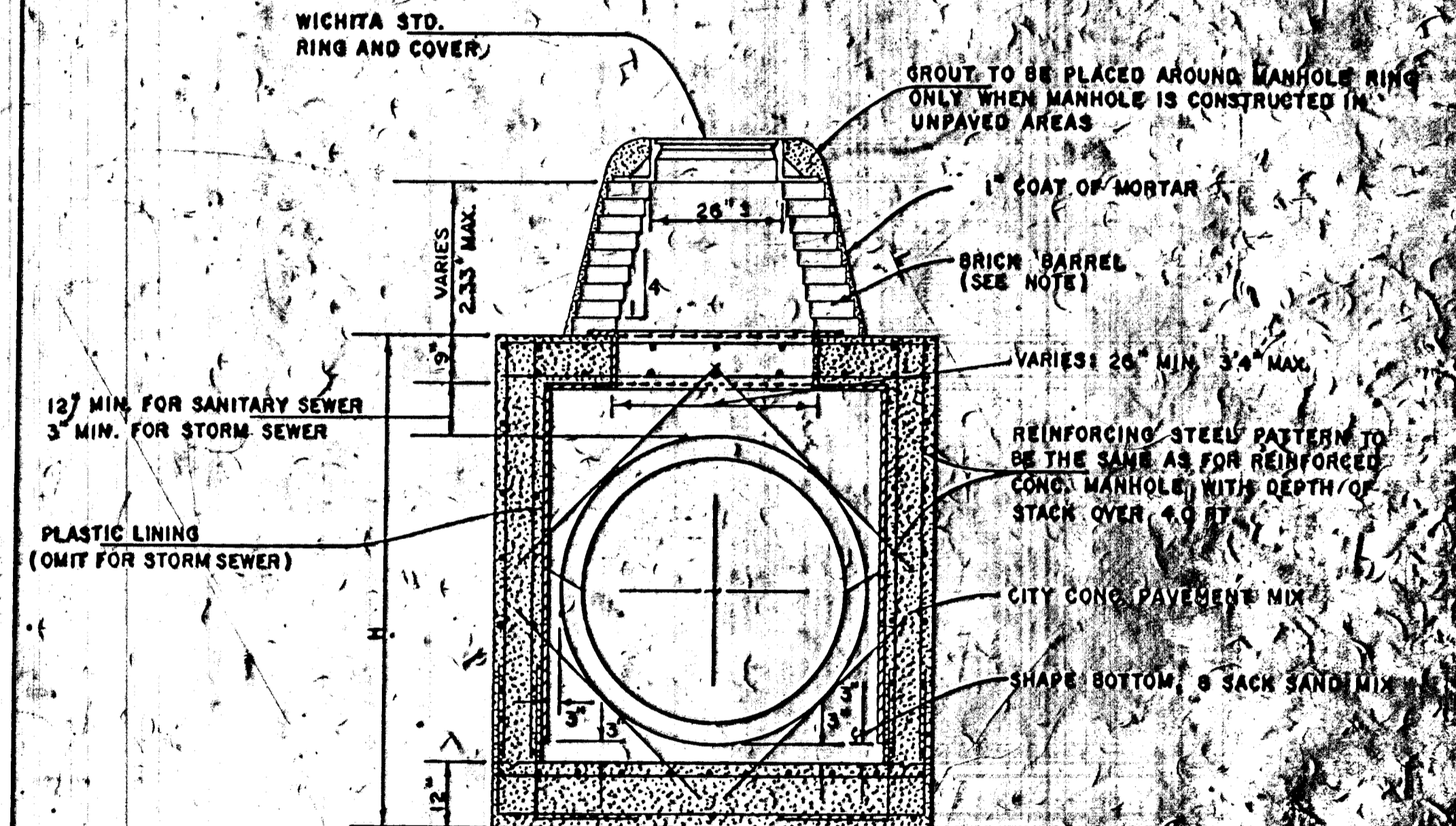


**R.C.P. CONNECTION DETAIL**  
**SANITARY SEWER ONLY**



**REINFORCED CONCRETE MANHOLE**  
 DEPTH OF STACK: 2.33' TO 4.0'  
 SCALE 1" = 2'

NOTE: BRICK BARRELS LESS THAN 16' DEEP SHALL HAVE 8" WALLS EXCEPT WHEN LOCATED WITHIN PUBLIC STREET OR ALLEY PAVEMENT THEN THE WALL SHALL BE 12". BRICK BARRELS MORE THAN 16' DEEP SHALL HAVE 12" WALLS. THE "L" AND "W" DIMENSIONS SHALL BE A MINIMUM OF 5'8" FOR BRICK BARRELS WITH 8" WALLS AND 6'2" FOR BRICK BARRELS WITH 12" WALLS WHEN THE BRICK BARRELS ARE OVER 4 FT. IN HEIGHT. COMPLETED MANHOLE SHALL BE WITHOUT LEAKS AND WATERTIGHT.



**REINFORCED CONCRETE MANHOLE**  
 DEPTH OF STACK: 0' TO 2.33'  
 SCALE 1" = 2'

REVISED 1-7-85

PROJECT NO. 472-827

**STANDARD DETAILS**  
**REINFORCED CONCRETE MANHOLES**

CITY OF WICHITA

FEBRUARY 1984

1808