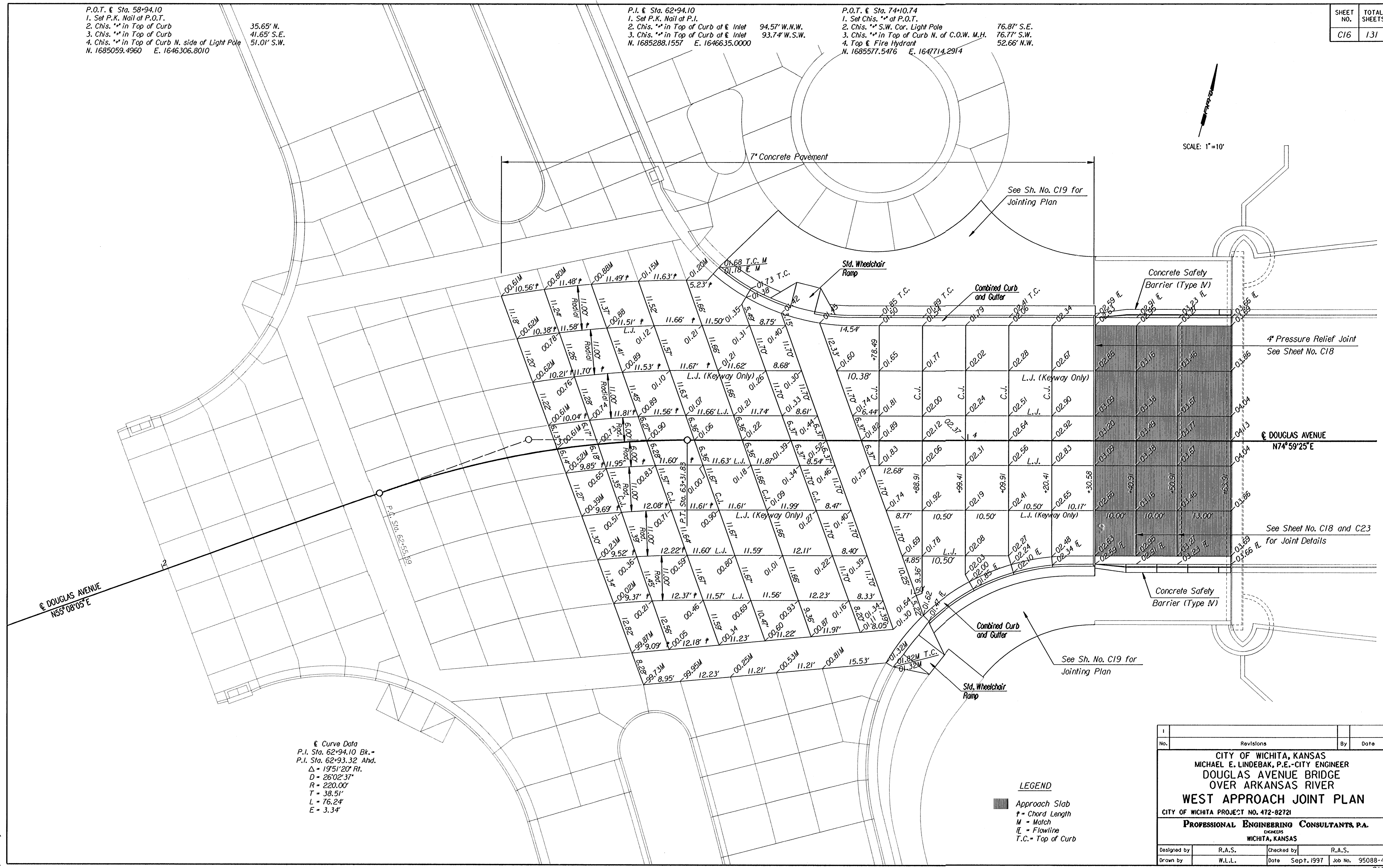


P.O.T. @ Sta. 58+94.10
 1. Set P.K. Nail at P.O.T.
 2. Chis. ** in Top of Curb
 3. Chis. ** in Top of Curb
 4. Chis. ** in Top of Curb N. side of Light Pole
 N. 1685059.4960 E. 1646306.8010

P.I. @ Sta. 62+94.10
 1. Set P.K. Nail at P.I.
 2. Chis. ** in Top of Curb at Inlet 94.57' W.N.W.
 3. Chis. ** in Top of Curb at Inlet 93.74' W.S.W.
 N. 1685288.1557 E. 1646635.0000

P.O.T. @ Sta. 74+10.74
 1. Set Chis. ** at P.O.T.
 2. Chis. ** S.W. Cor. Light Pole 76.87' S.E.
 3. Chis. ** in Top of Curb N. of C.O.W. M.H. 76.77' S.W.
 4. Top of Fire Hydrant 52.66' N.W.
 N. 1685577.5476 E. 1647714.2914

SCALE: 1"=10'



Curve Data
 P.I. Sta. 62+94.10 Bk.=
 P.I. Sta. 62+93.32 Ahd.
 Δ = 195°20' Rr.
 D = 26°02' 37"
 R = 220.00'
 T = 38.51'
 L = 76.24'
 E = 3.34'

LEGEND
 ■ Approach Slab
 * = Chord Length
 M = Match
 FL = Flowline
 T.C. = Top of Curb

No.	Revisions	By	Date

CITY OF WICHITA, KANSAS
MICHAEL E. LINDEBAK, P.E. - CITY ENGINEER
DOUGLAS AVENUE BRIDGE
OVER ARKANSAS RIVER
WEST APPROACH JOINT PLAN
 CITY OF WICHITA PROJECT NO. 472-82721
PROFESSIONAL ENGINEERING CONSULTANTS, P.A.
ENGINEERS
WICHITA, KANSAS

Designed by	R.A.S.	Checked by	R.A.S.
Drawn by	W.L.L.	Date	Sept. 1997 Job No. 95088-4

File: i:\1995\95088\douglas\westappr.dgn
 drawn by: jgp/wll
 plotted by: ras 3-14-98