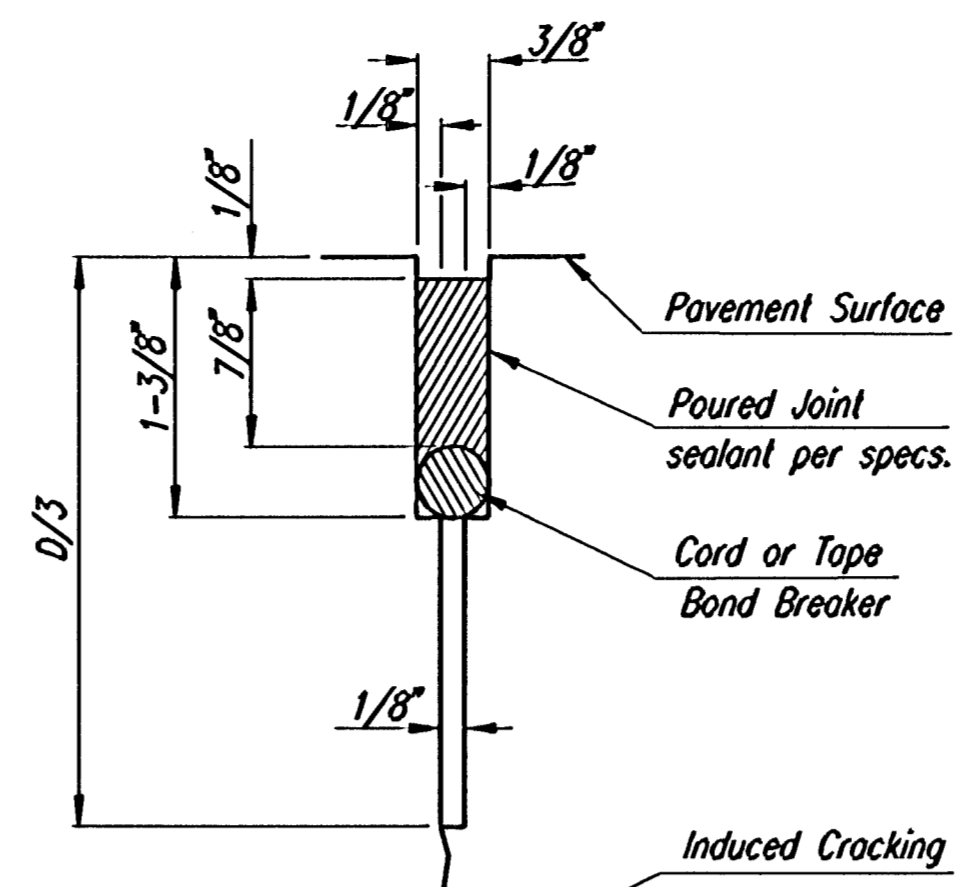


PAVEMENT DETAIL AT CROSSWALK



DETAIL A

GENERAL NOTES

All work shall be done in conformity with the Standard Specifications applicable to the project.

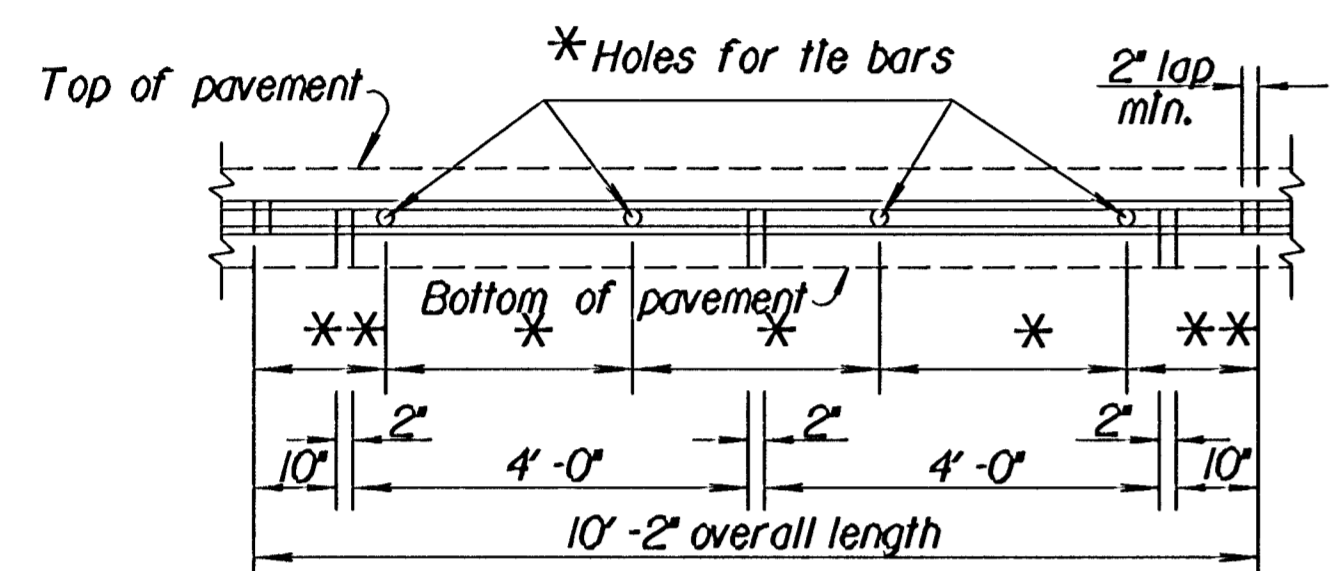
The cost of all bars, mesh and joint material shown on this sheet is to be included in the bid price for Concrete Pavement.

At each planned transverse joint location, a 4 to 6 inch wide strip of the pavement surface shall be protected from the texturing operation to provide a transverse textureless surface centered over the joint sawcut.

All joints on this project shall be sawed and filled with sealant in accordance with Standard Specifications.

All materials and work required for this construction shall be Subsidiary to the concrete approach slab.

Note: Minimum Welded Wire Mesh for the 7" Reinforced Concrete Pavement will be 6x12 - W2.9xW2.9.



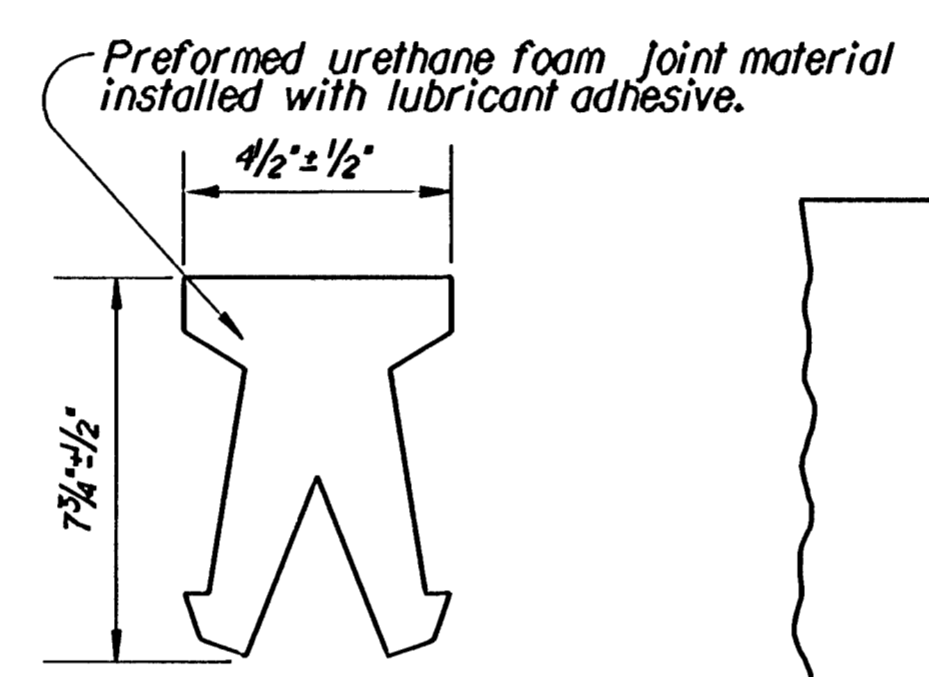
SECTION OF RECESSED FORM LEG

To be used only against forms. Shall not extend through contraction joints.

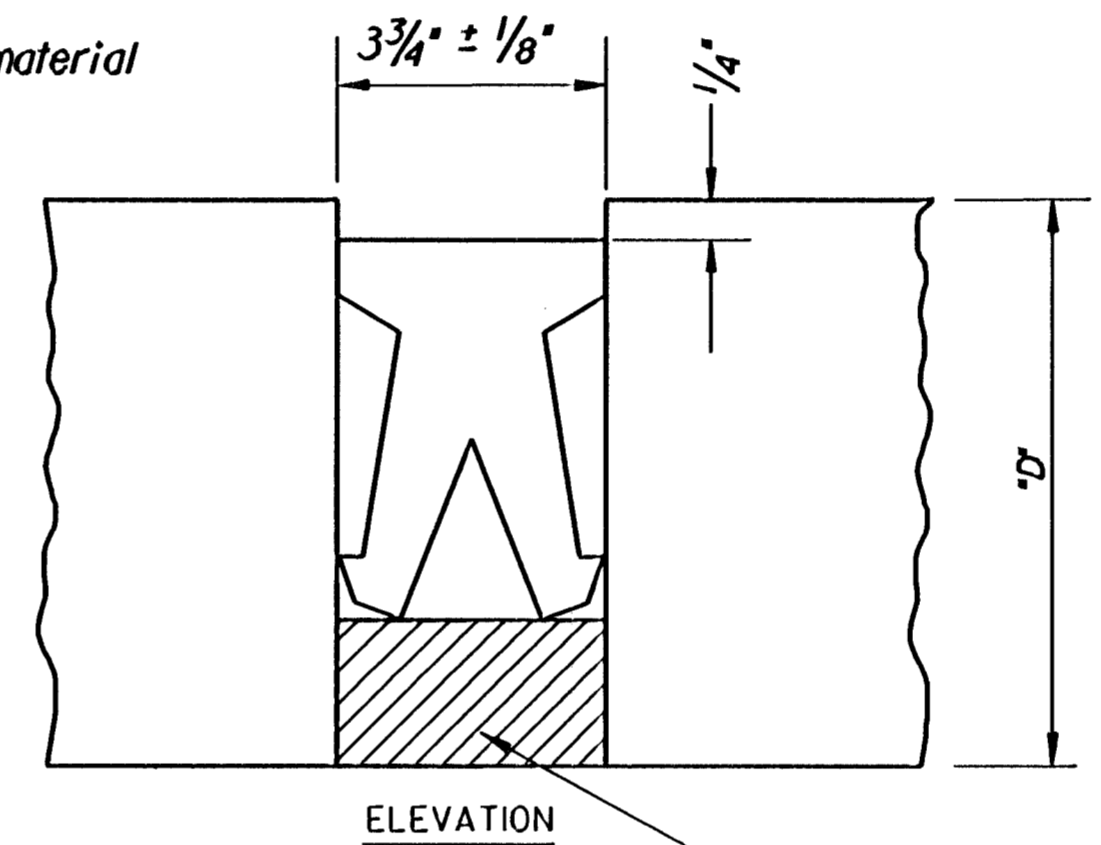
* Tie bar size and spacing shall be as shown in table.

** Space variable depending on tie bar spacing. Shall not exceed one half tie bar spacing plus one inch.

METAL STRIP FOR LONGITUDINAL CONSTRUCTION JOINT



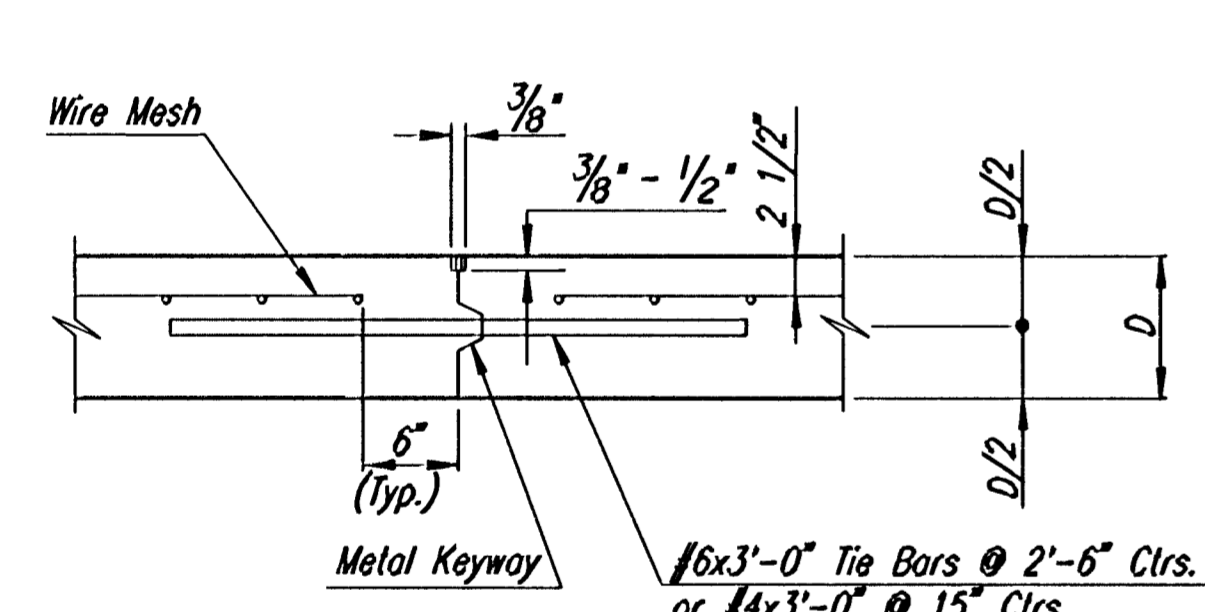
DETAIL



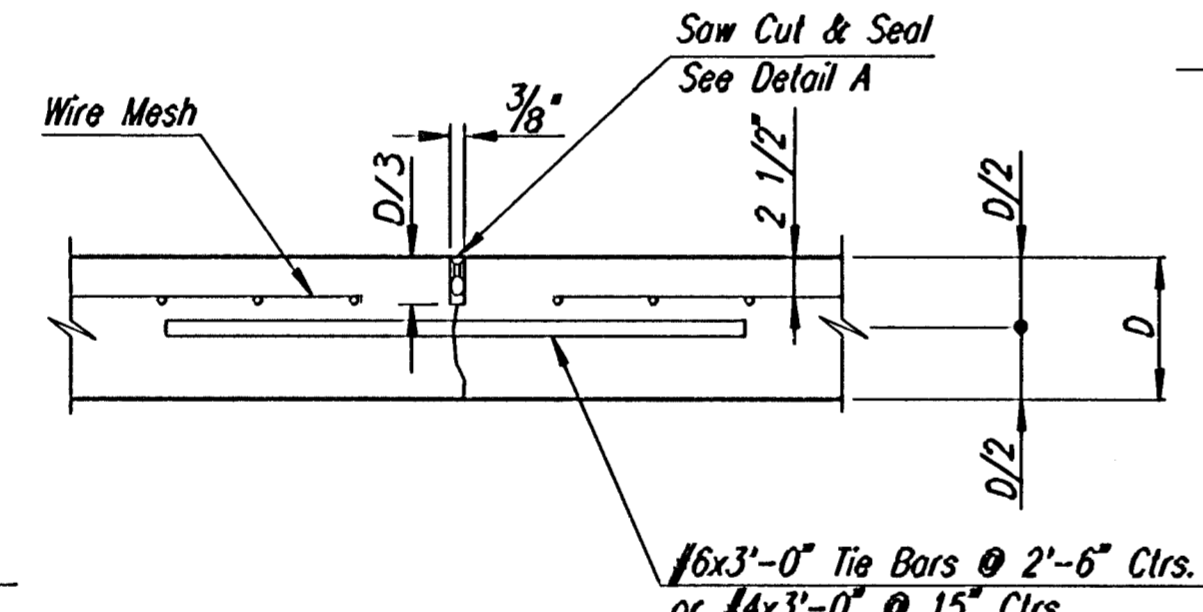
ELEVATION

Adjust the bottom of the expansion joint trench and place a 1" x 3 3/4" polystyrene or polyurethane foam so that the joint material is positioned 1/4" below the pavement top surface.

PRESSURE RELIEF JOINT MATERIAL

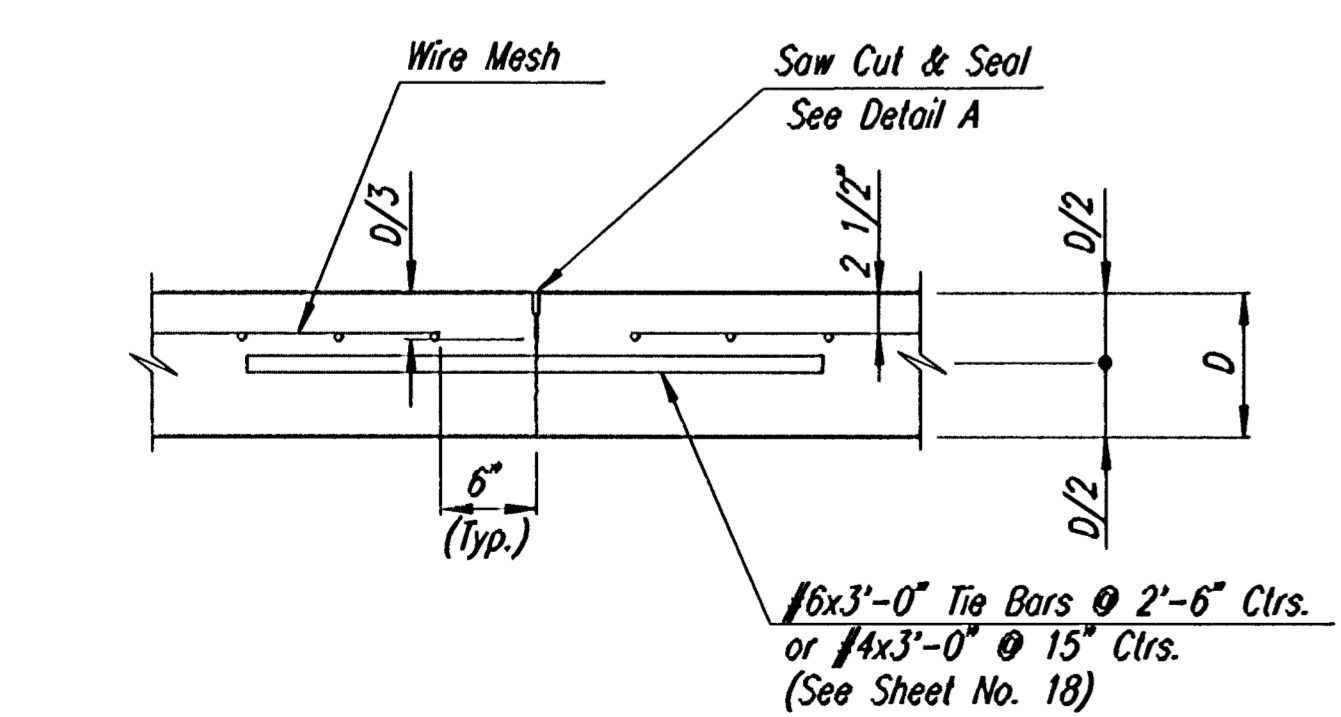


TIED KEYED CONSTRUCTION JOINT

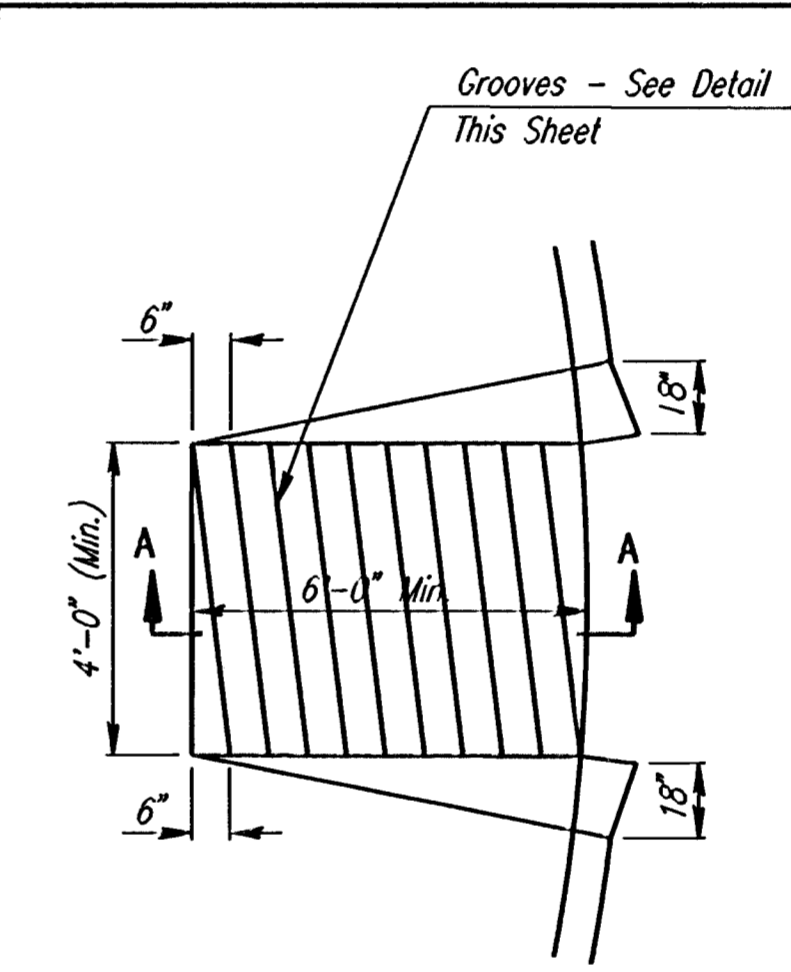


TIED NON-KEYED CONSTRUCTION JOINT

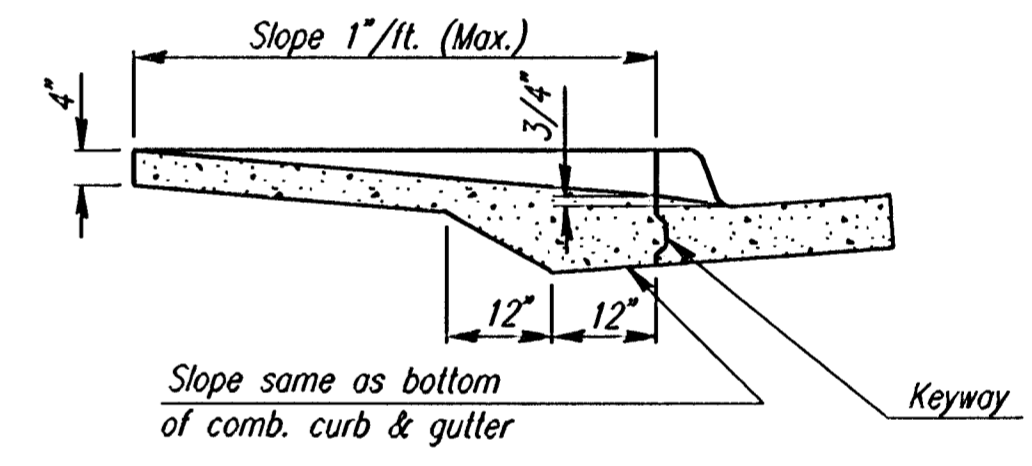
LONGITUDINAL CONSTRUCTION JOINT DETAIL REINFORCED PAVEMENT (TRANSVERSE SECTION) (L.J.)



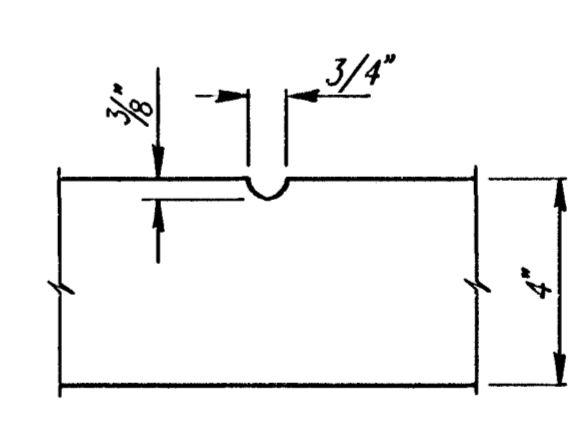
LONGITUDINAL JOINT DETAIL REINFORCED PAVEMENT (TRANSVERSE SECTION) (L.J.)



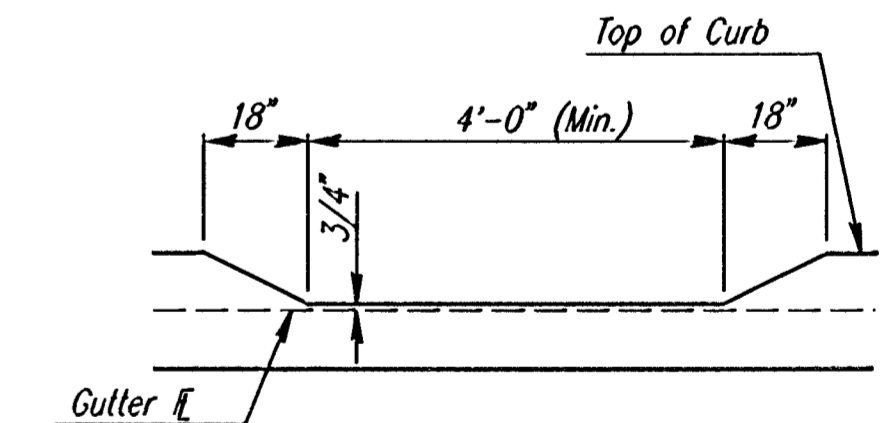
WHEELCHAIR RAMP DETAIL



SECTION A-A

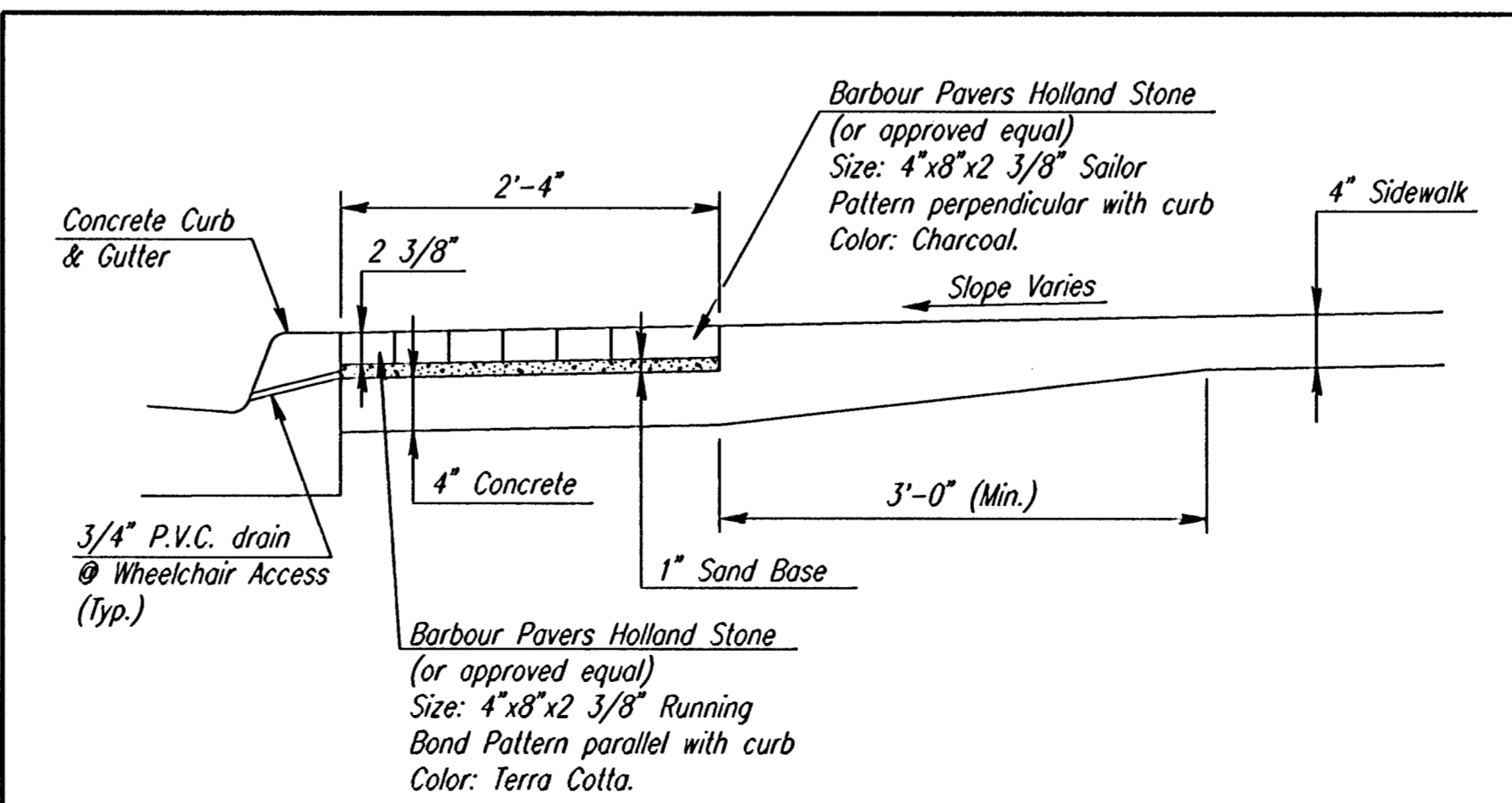


GROOVE DETAIL



DEPRESSED CURB DETAIL

TYPICAL WHEELCHAIR RAMP DETAILS



CONCRETE PAVER EDGING (Subsidiary to 4" Sidewalk Concrete Pavement)

No.	Revisions	By	Date
CITY OF WICHITA, KANSAS MICHAEL E. LINDEBAK, P.E.-CITY ENGINEER DOUGLAS AVENUE BRIDGE OVER ARKANSAS RIVER MISCELLANEOUS PAVEMENT DETAILS CITY OF WICHITA PROJECT NO. 472-82721 PROFESSIONAL ENGINEERING CONSULTANTS, P.A. ENGINEERS WICHITA, KANSAS			
Designed by	R.W.A.	Checked by	R.A.S.
Drawn by	W.L.L.	Date	Sept. 1997 Job No. 95088-4