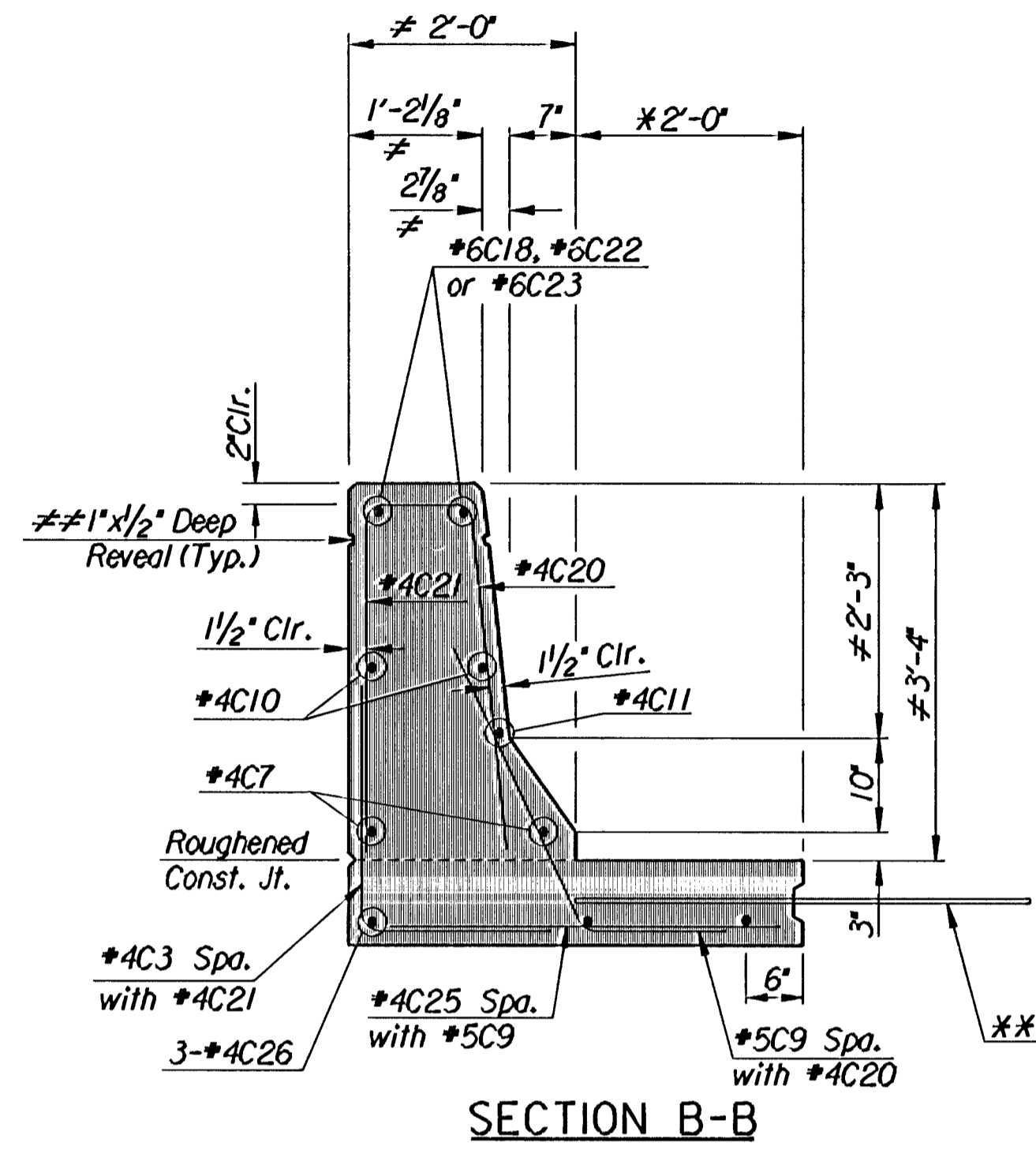
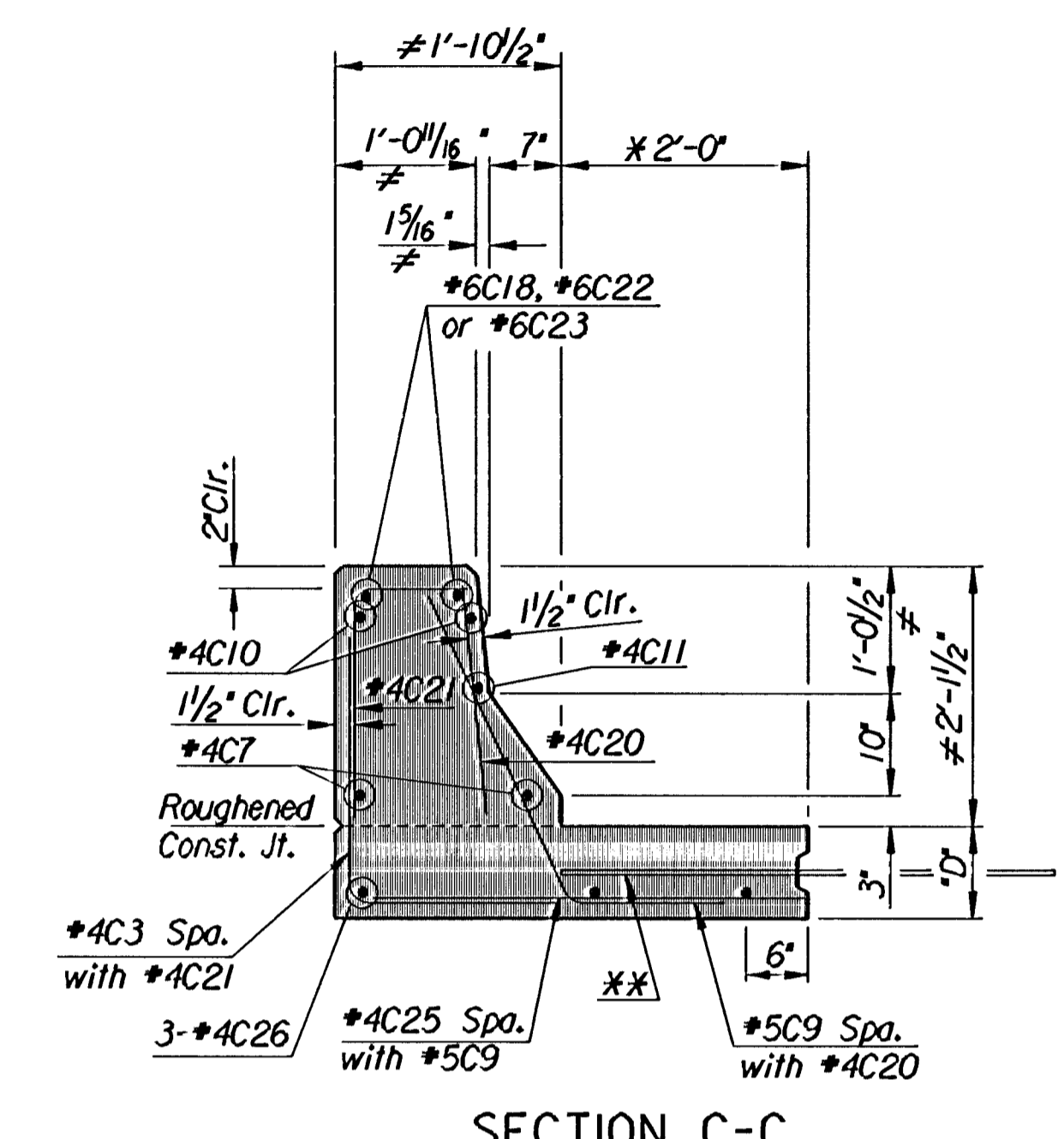


SECTION A-A

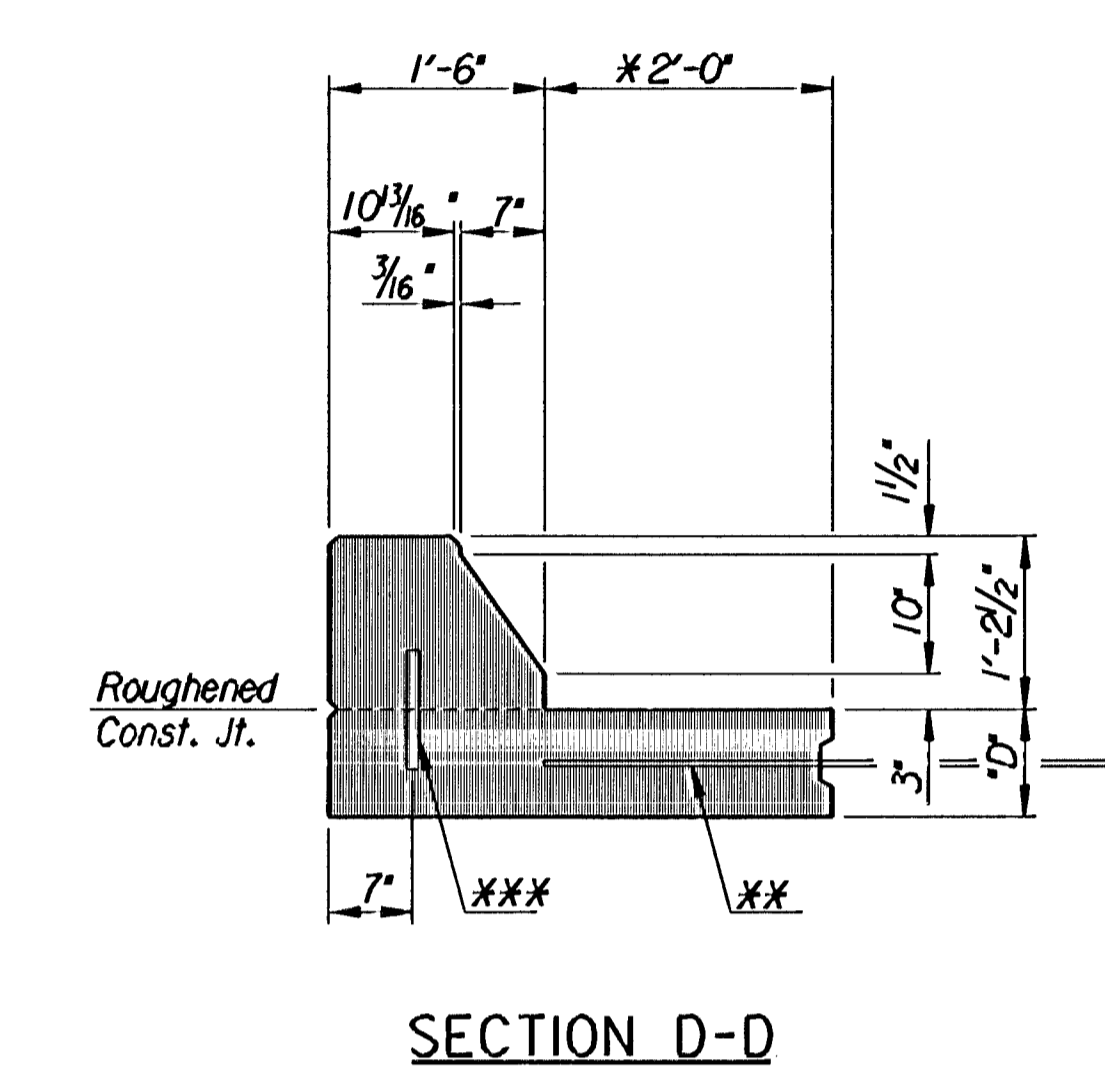


SECTION B-B

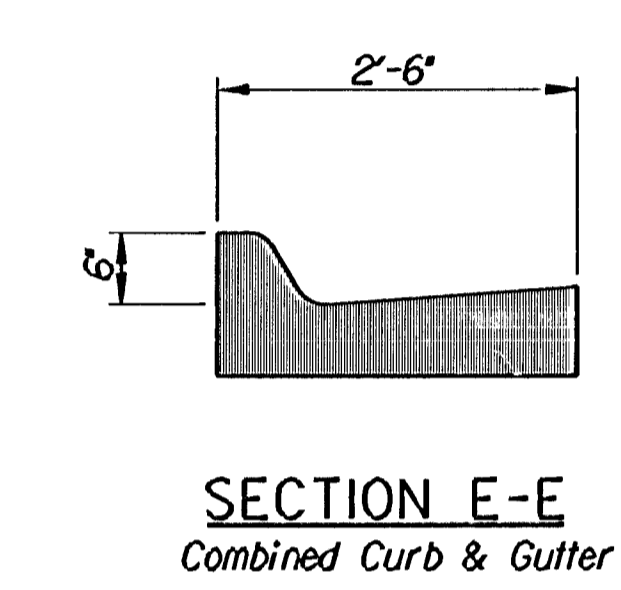


SECTION C-C

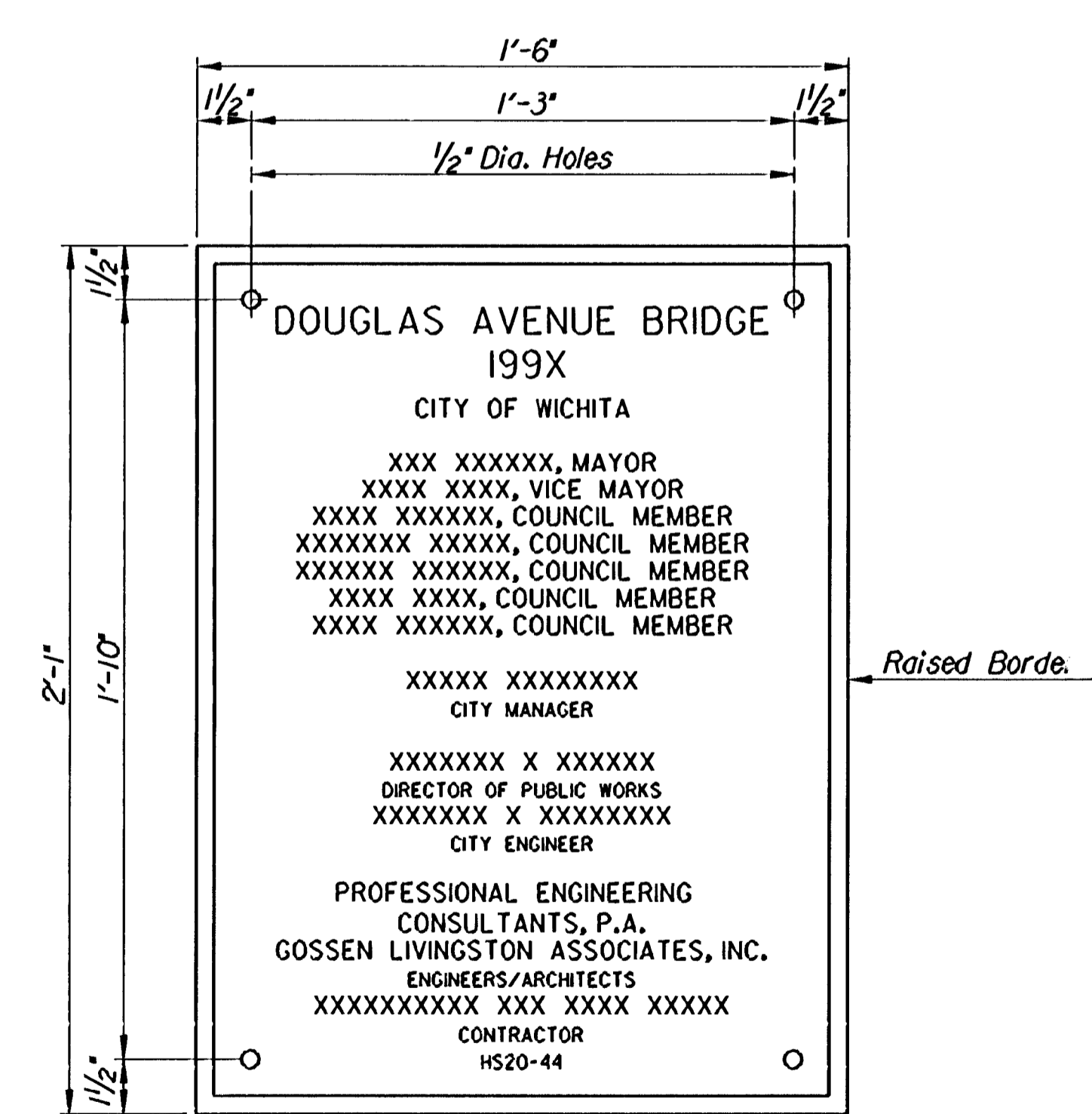
Note: "D"=10"



SECTION D-D



SECTION E-E
Combined Curb & Gutter

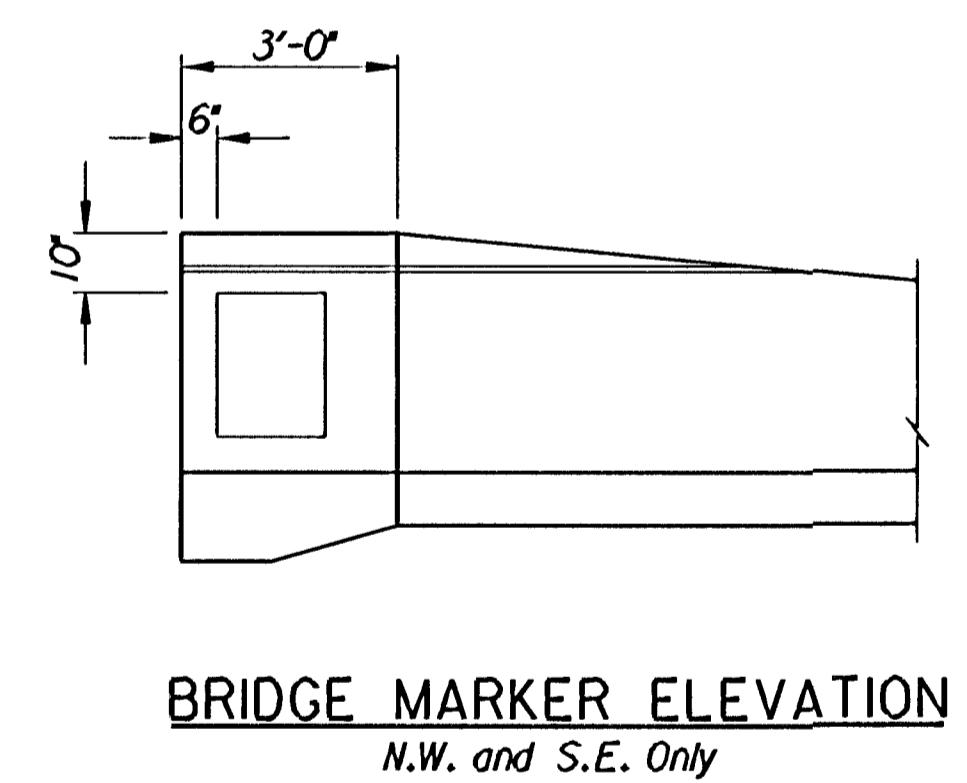


BRIDGE PROJECT MARKER
2 Required

Note:
XXXX Names as directed by City Engineer.
Contractor to furnish rubbing before casting.

- * Slope to match adjacent pavement.
- ** Longitudinal Construction Joints and #6x3'-0" bars at 2'-6" centers where Concrete Pavement is constructed. See Sheet No. C23 for locations of Tie Bars.
- *** Optional Construction Joint from Section D-D to Section E-E with #8x0'-10" bars at 2'-6" centers.

≠ Dimensions transition from Section B-B to Section C-C and from Section C-C to Section D-D
≠ Extend Reveal parallel to Crown Grade.



BRIDGE MARKER ELEVATION
N.W. and S.E. Only

General Notes:

The Concrete Safety Barrier (Type IV) shall be constructed of Class AAA Concrete (AE) and Reinforcing Steel complying to A.S.T.M. Designation A-615 Grade 60. All Bar clearances shall be 1/2" unless otherwise noted.

The Exposed Faces of the Barrier shall be Grooved with a 3/4" Chamfer Strip at Contraction Joint locations.

The Bid Item "Concrete Safety Barrier (Type IV)" shall be measured per lineal foot as per Plan. The amount of completed and accepted work, measured by lineal foot, shall be paid for at the Contract Unit Price Bid for the various types of "Concrete Safety Barrier (Type IV)". This Price shall be considered full compensation for furnishing all material, equipment and labor necessary to complete the work.

No.	Revisions	By	Date
CITY OF WICHITA, KANSAS MICHAEL E. LINDEBAK, P.E.-CITY ENGINEER DOUGLAS AVENUE BRIDGE OVER ARKANSAS RIVER APPROACH BARRIER SECTIONS CITY OF WICHITA PROJECT NO. 472-82721 PROFESSIONAL ENGINEERING CONSULTANTS, P.A. ENGINEERS WICHITA, KANSAS			
Designed by	R.W.A.	Checked by	R.A.S.
Drawn by	W.L.L.	Date	Sept. 1997 Job No. 95088-4

I:\1995\95088\douglas\apprbarr.dgn
 drawn by: will
 plotted by: ros 9-3-97