

B.M. #7 - Brass Disk on Top of Concrete Pedestal East Side of McLean Boulevard, 125' North of the Northwest Corner of the Douglas Street Bridge
 El. 1302.61

P.I. @ Sta. 62+94.10
 1. Set P.K. Nail at P.I.
 2. Chis. "x" in Top of Curb at Inlet
 3. Chis. "x" in Top of Curb at Inlet
 N. 1685288.1557 E. 1646635.0000

DATUM BENCH MARK:
 B.M. #6 - Brass Disk on Top of Guardrail at the Southeast Corner of Douglas Street Bridge
 El. 1303.29

P.O.T. @ Sta. 74+10.74
 1. Set Chis. "x" at P.O.T.
 2. Chis. "x" S.W. Cor. Light Pole
 3. Chis. "x" in Top of Curb N. of C.O.W. M.H.
 4. Top @ Fire Hydrant
 N. 1685577.5476 E. 1647714.2914

B.M. #5 - Chiseled Square on the North Corner of the North Footing of "Trippod" Sculpture at the Northwest Corner of "Century II" Building.
 El. 1300.45

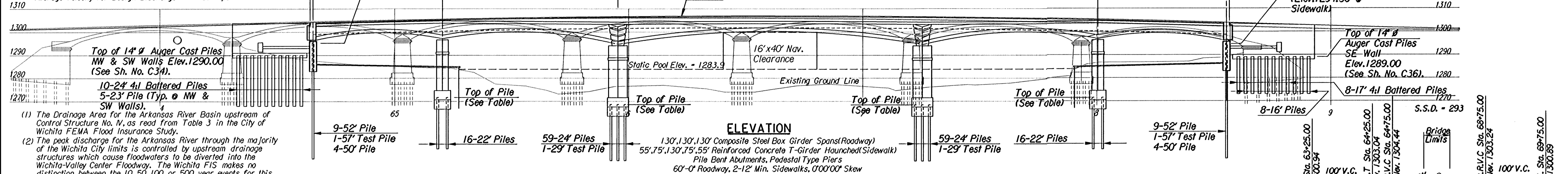
SHEET NO.	TOTAL SHEETS
C29	131

DRAINAGE DATA

- (1) Drainage Area 40,490 Sq. Mi.
- (2) Design Frequency 500 Yr.
- (3) Design Discharge 25,500 CFS
- Design High Water 1293.04 Ft.
- Design Backwater 0.07 Ft.
- Design Backwater Elevation 1293.57 Ft.
- Base River Flow Elevation 1278.0 +/- Ft.
- Ordinary Highwater Elevation 1285.00 Ft.
- Total Waterway Provided 6600 Sq. Ft.
- Design Waterway Provided 4705 Sq. Ft.
- Base Flood Elev. (FEMA) 1293.06 Ft.
- Average Velocity for Design Discharge 5.4 fps

392'-6" End to End of Wearing Surface

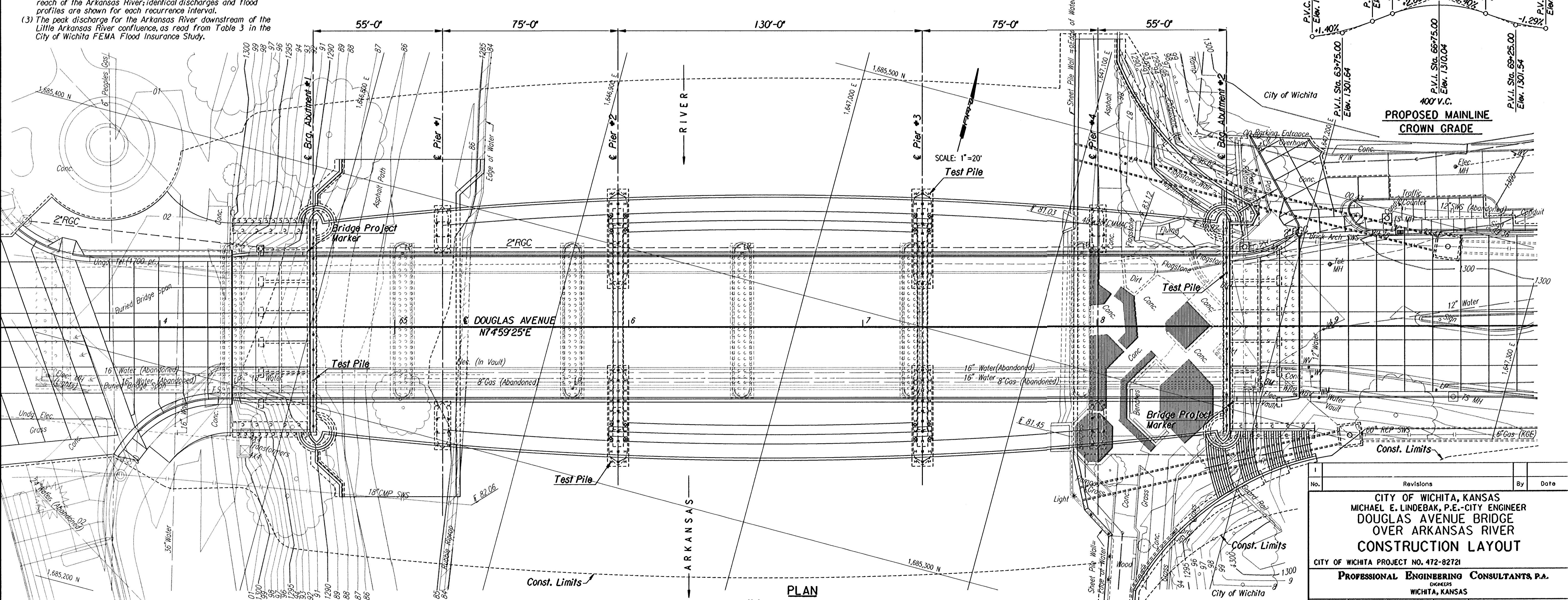
PIER PILING SUMMARY			
Location	Left Top Elev.	Right Top Elev.	Length
Pier No. 1	1271.72	1271.72	22'
Pier No. 2	1268.66	1268.66	24'
Pier No. 3	1268.56	1268.56	24'
Pier No. 4	1271.51	1271.51	22'



- (1) The Drainage Area for the Arkansas River Basin upstream of Control Structure No. N, as read from Table 3 in the City of Wichita FEMA Flood Insurance Study.
- (2) The peak discharge for the Arkansas River through the majority of the Wichita City limits is controlled by upstream drainage structures which cause floodwaters to be diverted into the Wichita-Valley Center Floodway. The Wichita FIS makes no distinction between the 10, 50, 100 or 500 year events for this reach of the Arkansas River; identical discharges and flood profiles are shown for each recurrence interval.
- (3) The peak discharge for the Arkansas River downstream of the Little Arkansas River confluence, as read from Table 3 in the City of Wichita FEMA Flood Insurance Study.

ELEVATION

130', 130', 130' Composite Steel Box Girder Spans (Roadway)
 55', 75', 130', 75', 55' Reinforced Concrete T-Girder Haunched (Sidewalk)
 Pile Bent Abutments, Pedestal Type Piers
 60'-0" Roadway, 2'-12" Min. Sidewalks, 0'00'00" Skew



PROPOSED MAINLINE CROWN GRADE

No.	Revisions	By	Date

CITY OF WICHITA, KANSAS
MICHAEL E. LINDEBAK, P.E. - CITY ENGINEER
DOUGLAS AVENUE BRIDGE OVER ARKANSAS RIVER
CONSTRUCTION LAYOUT
 CITY OF WICHITA PROJECT NO. 472-82721
PROFESSIONAL ENGINEERING CONSULTANTS, P.A.
 ENGINEERS
 WICHITA, KANSAS

Designed by	R.A.S.	Checked by	R.A.S.
Drawn by	J.G.P./W.L.L.	Date	Sept, 1997
		Job No.	95088-4

File: i:\1995\95088\layout.dgn
 drawn by: Jgp/wll
 plotted by: ras 3-14-98

Note:
 See Sheet C2 for Utility Information.