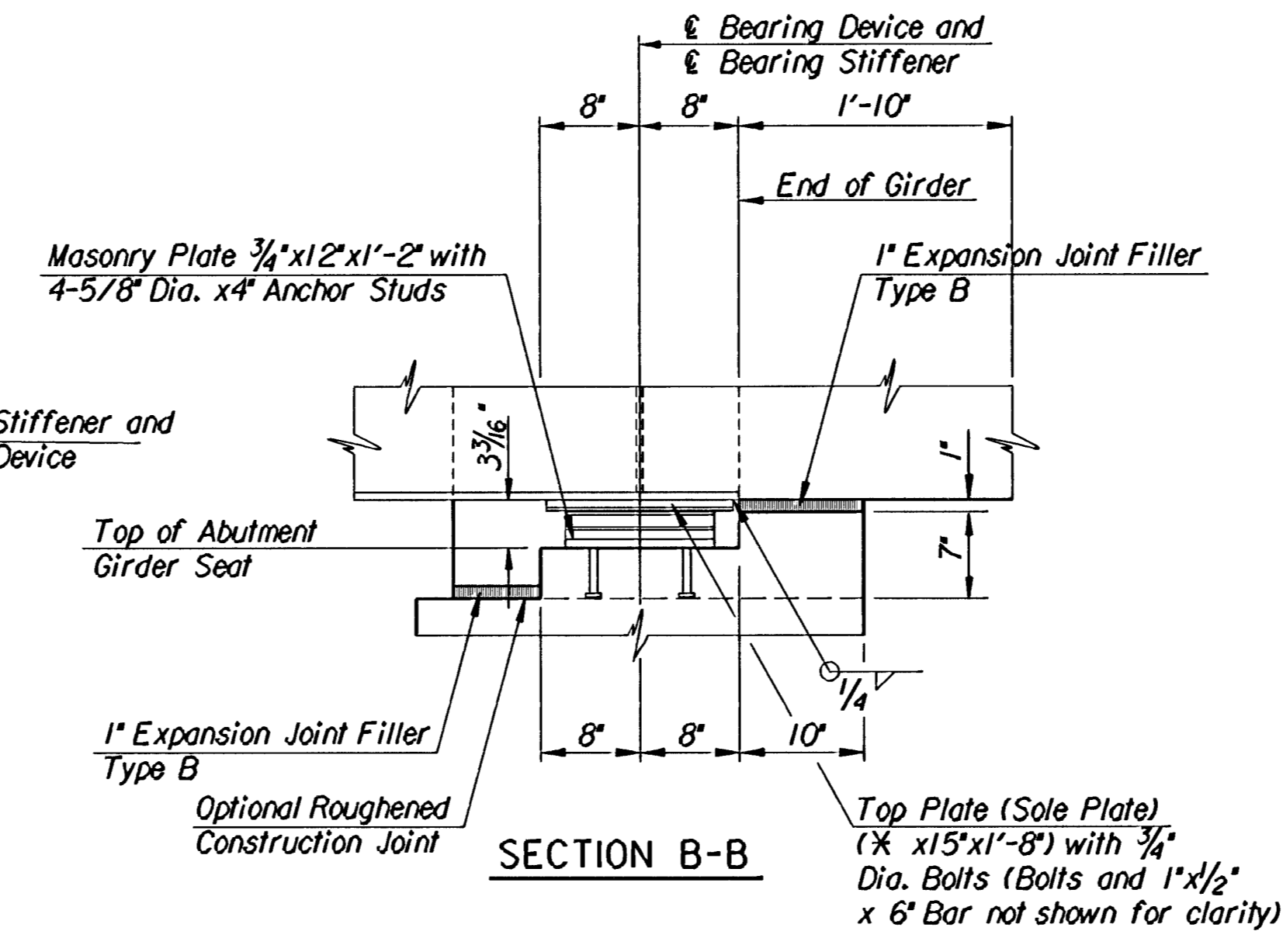
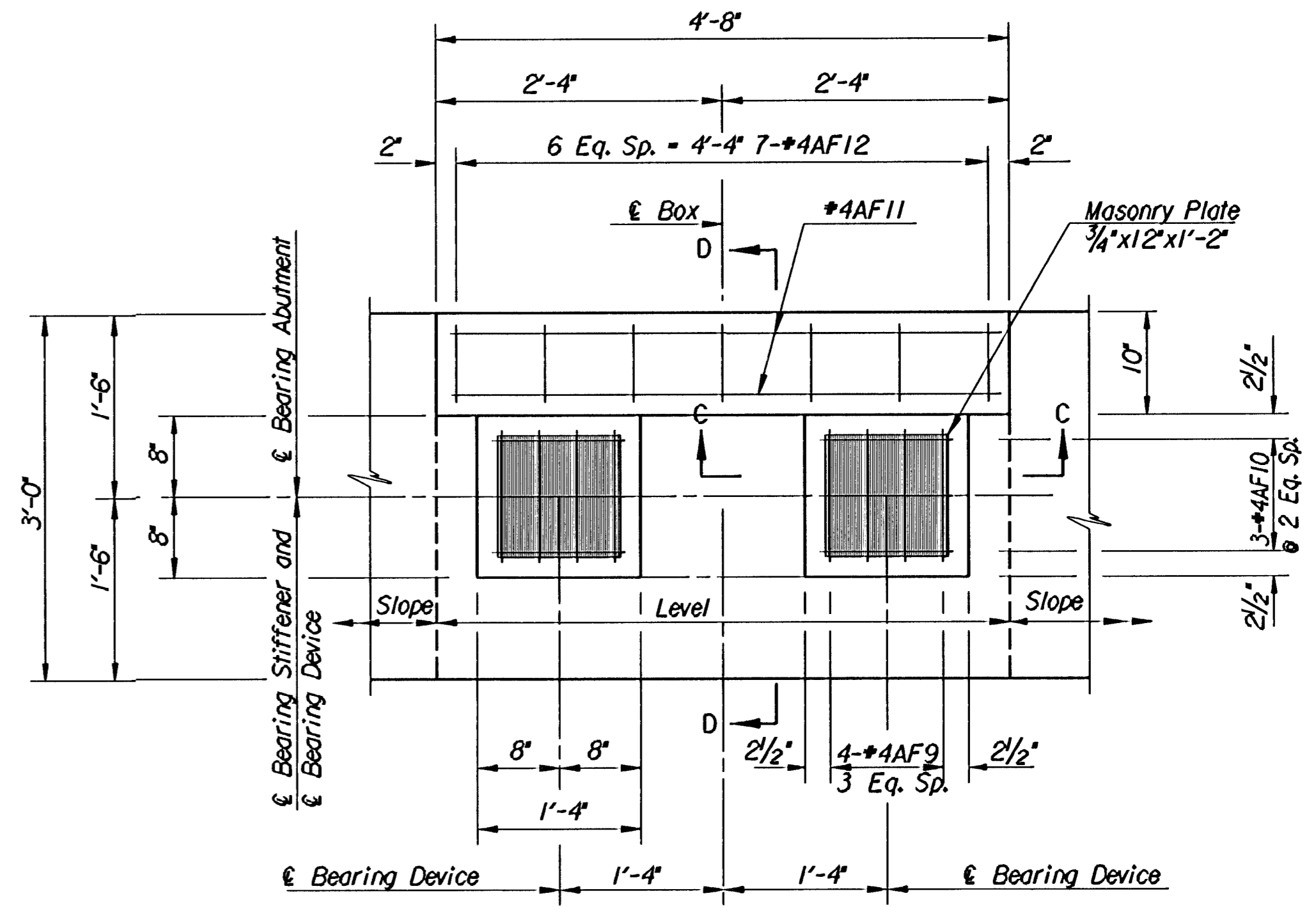


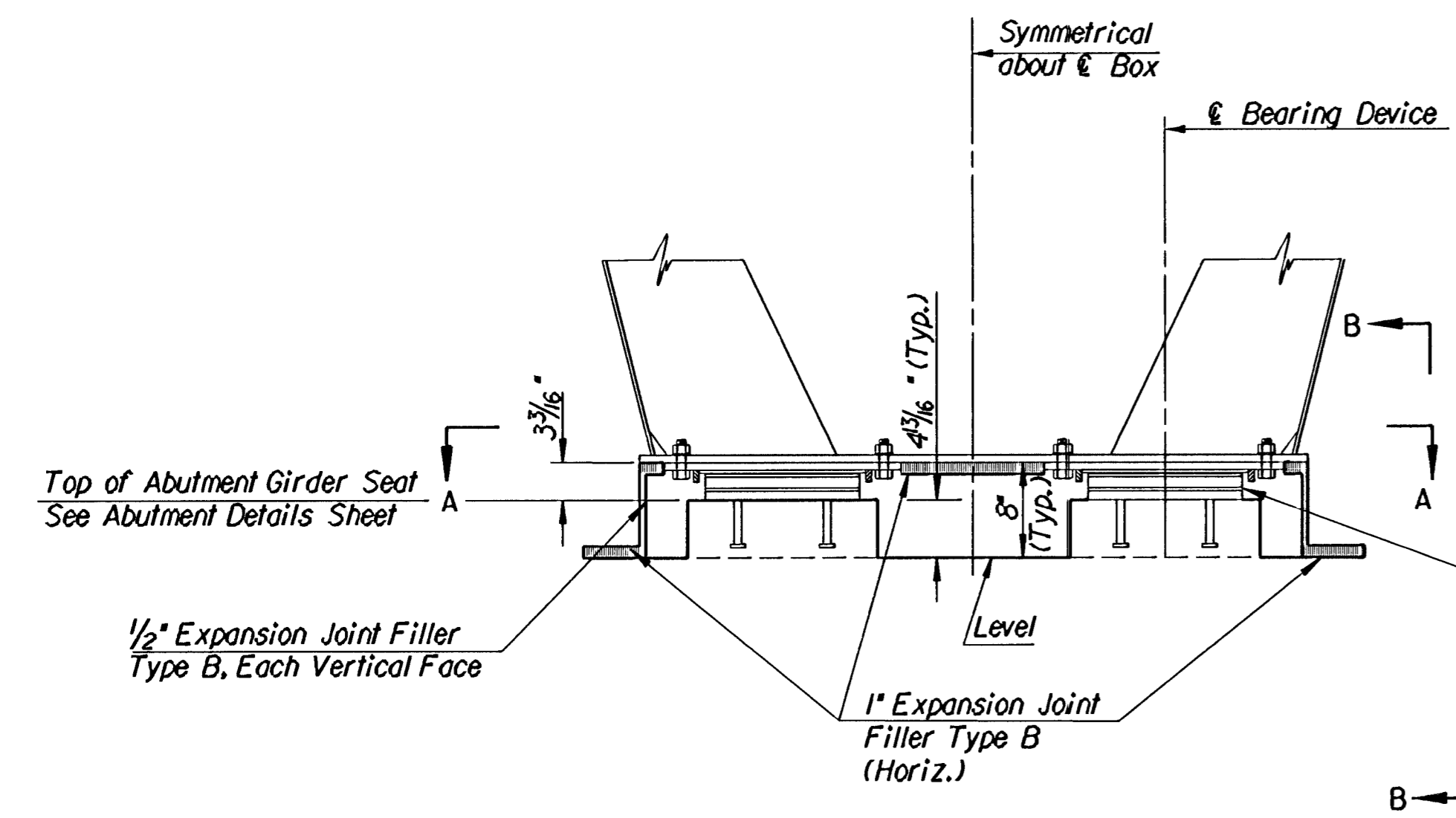
SECTION A-A



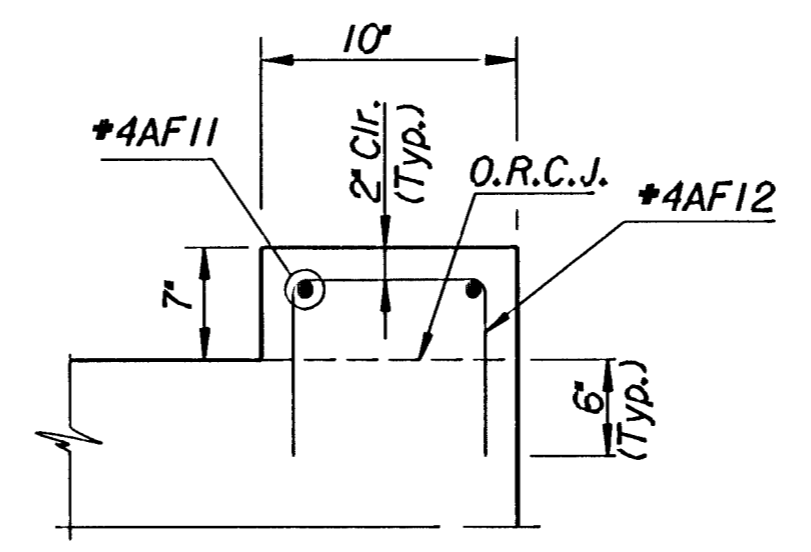
SECTION B-B



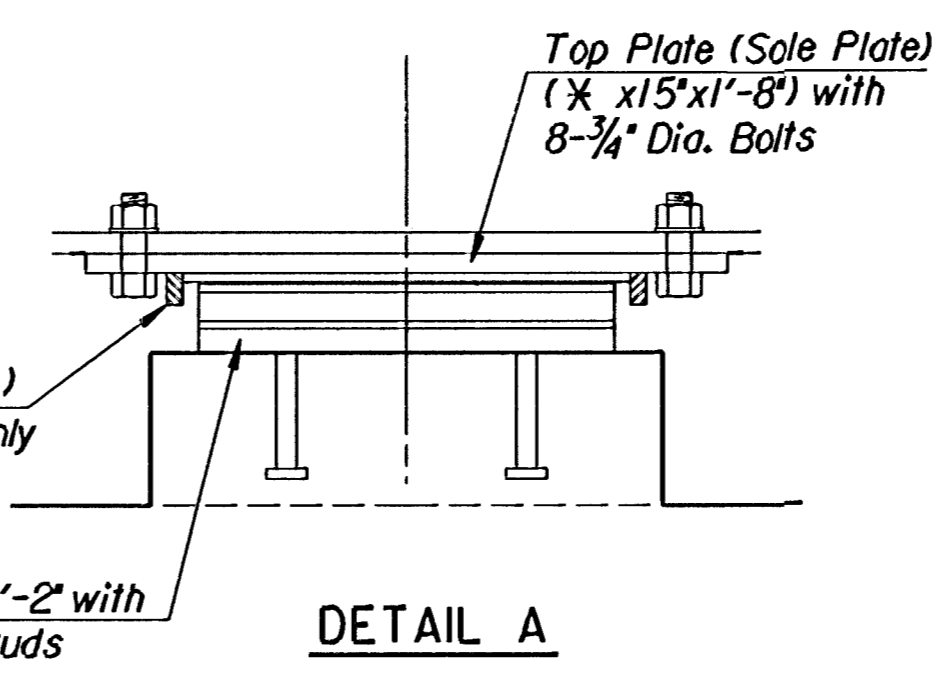
GIRDER SEAT DETAIL



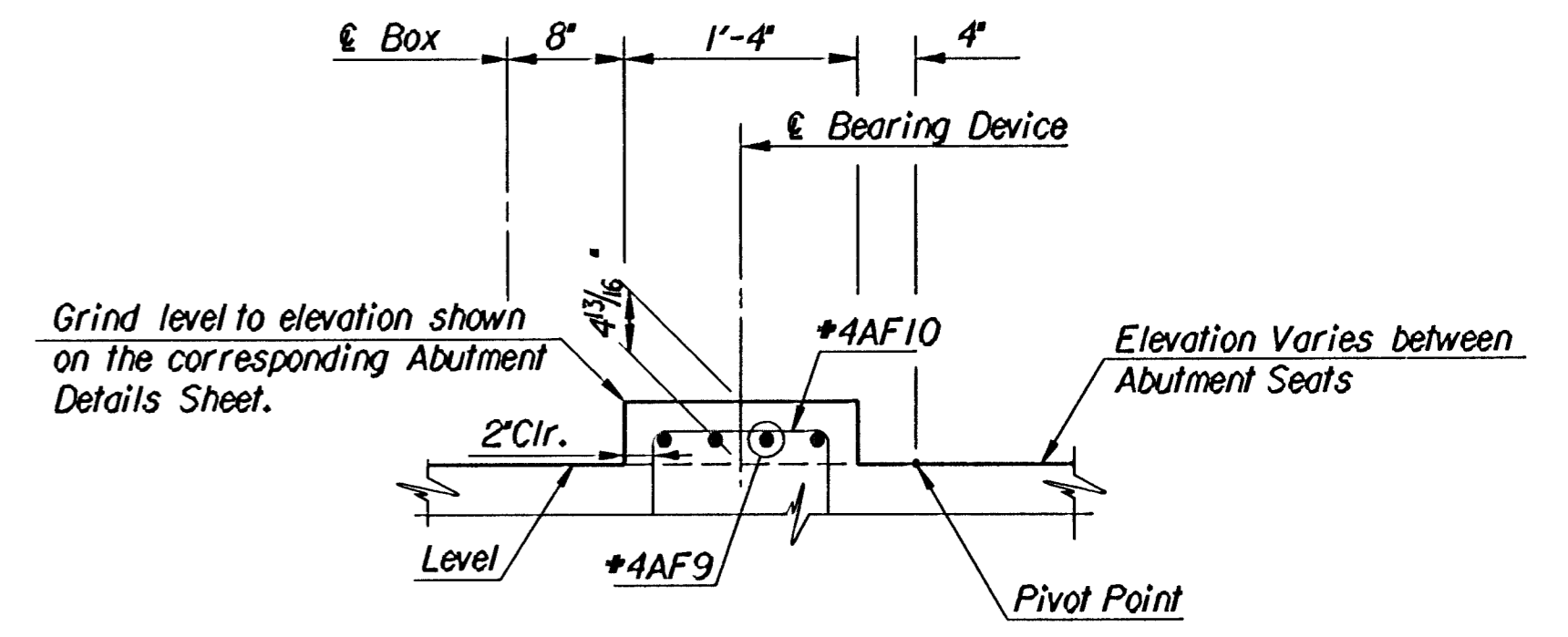
TYPICAL SECTION



SECTION D-D



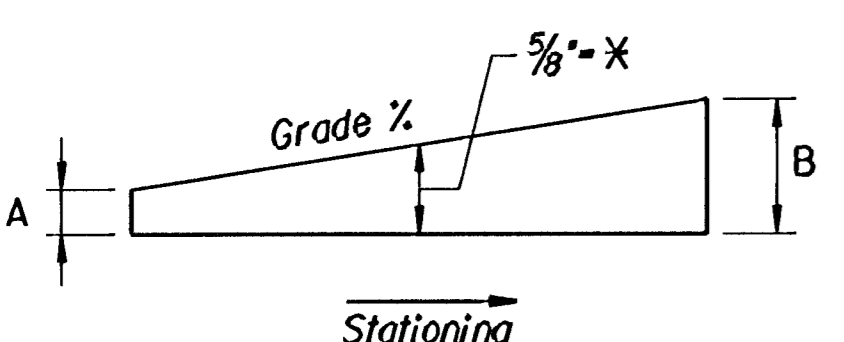
DETAIL A



SECTION C-C

Location	Abut. Bridge Girder Bearings R max.=93k	Pier Bridge Girder Bearings R max.=247k	Abut. Sidewalk Bearings R max.=70k	Pier #1 & #4 Sidewalk Bearings R max.=95k	Pier #2 Sidewalk Bearings R max.=338k	Pier #3 Sidewalk Bearings R max.=338k
Abut. #1	Furon FC-1025(Exp.)		PMCG100 (Exp.)			
Pier #1				PMCG100 (Exp.)		
Pier #2		**			PF400 (Fixed)	PMCG400 (Exp.)
Pier #3		**			PF400 (Fixed)	PMCG400 (Exp.)
Pier #4				PMCG100 (Exp.)		
Abut. #2	Furon FC-1025(Exp.)		PMCG100 (Exp.)			

** See Sh. No. C44 for Elastomeric Bearing for Bridge Girders at Piers



DETAIL OF SOLE PLATES

Dimension	Abutment #1	Abutment #2
A	3/8"	7/8"
B	7/8"	3/8"
% Grade	+2.8	-3.4

SLIDING BEARING NOTES:

- Details shown are based on Sliding Bearings manufactured by D.S. Brown Company, North Baltimore, Ohio (419-257-3561) or Seismic Energy Products LP, Athens, Texas (903-675-8571) See Table. The Contractor may propose alternate bearings which meet the requirements for capacities and movements given in the Plans and submit to the Engineer for approval. The Contractor shall then adjust Bearing Seat Elevations as necessary to accommodate the Proposed Bearing Device.
- The capacities tabulated are for one Bearing and are based on unfactored service loads.
- The Rotational capacity of each Bearing shall be 0.02 Radians.
- All Bearings shall be self aligning. All Expansion Bearings shall be guided bearings.
- Minimum vertical loads are given for test purposes.

No.	Revisions	By	Date
CITY OF WICHITA, KANSAS MICHAEL E. LINDEBAK, P.E.-CITY ENGINEER DOUGLAS AVENUE BRIDGE OVER ARKANSAS RIVER AUXILIARY ABUTMENT DETAILS ROADWAY CITY OF WICHITA PROJECT NO. 472-82721 PROFESSIONAL ENGINEERING CONSULTANTS, P.A. ENGINEERS WICHITA, KANSAS			
Designed by	R.W.A.	Checked by	R.A.S.
Drawn by	W.L.L.	Date	Sept. 1997 Job No. 95088-4

1:1995/95088/douglas/auxabut.dgn
 Drawn by: jgp
 Plotted by: ros 9-5-97