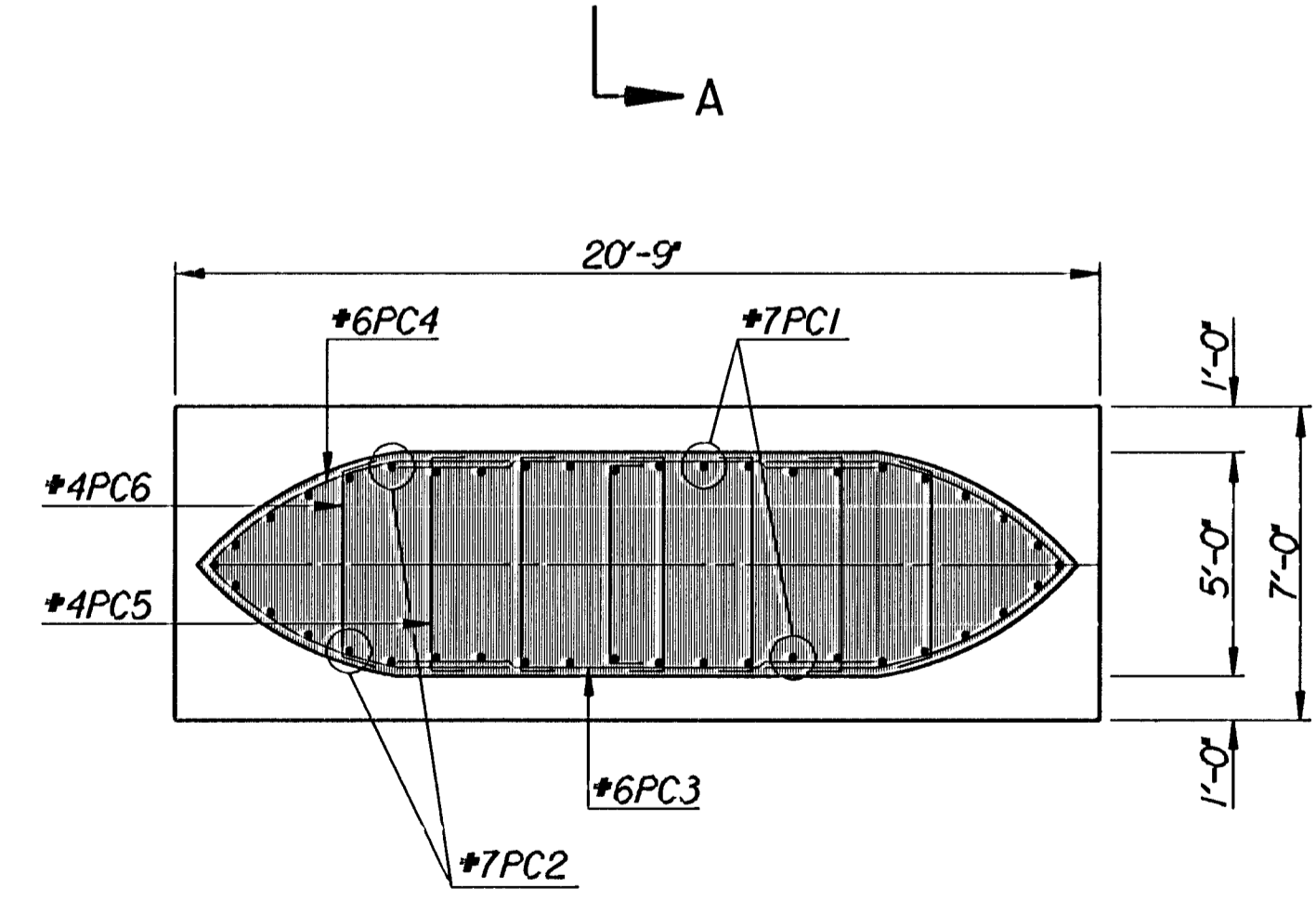
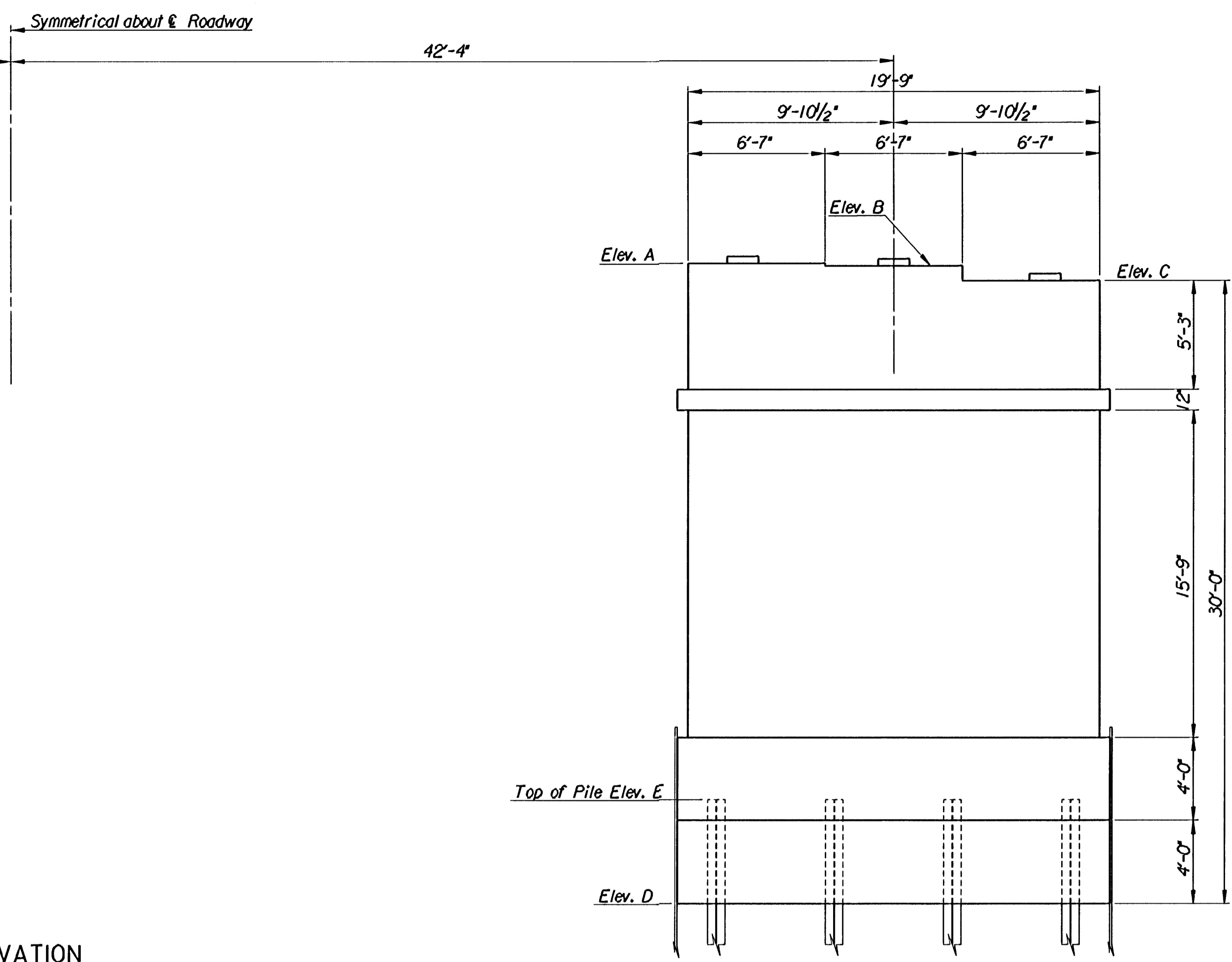


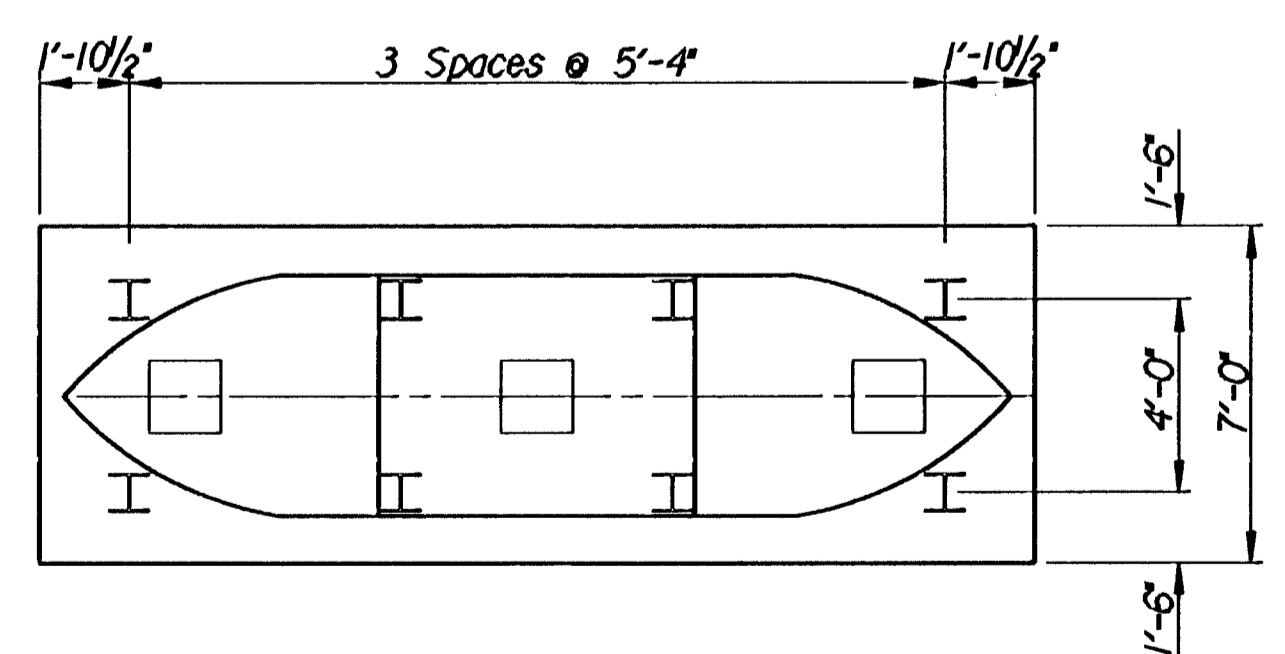
ELEVATION



SECTION THRU COLUMN



Top of Pile Elev. E



Design Pile Pressure = 46.5 Tons/Pile (Group 1)

TABLE OF ELEVATIONS					
Location	Elev. A	Elev. B	Elev. C	Elev. D	Elev. E
Pier #1	1297.55	1297.43	1296.72	1266.72	1271.72
Pier #4	1297.34	1297.23	1296.51	1266.51	1271.51

Revisions				By	Date
CITY OF WICHITA, KANSAS MICHAEL E. LINDEBAK, P.E.-CITY ENGINEER DOUGLAS AVENUE BRIDGE OVER ARKANSAS RIVER PIERS 1 AND 4 ELEVATION CITY OF WICHITA PROJECT NO. 472-82721 PROFESSIONAL ENGINEERING CONSULTANTS, P.A. ENGINEERS WICHITA, KANSAS					
Designed by	P.D.F.	Checked by	R.A.S.		
Drawn by	W.L.L.	Date	Sept. 1997	Job No. 95088-4	

1/1995/95088/douglas/ptier1-4
 drawn by : will
 plotted by : RAS 9-2-97