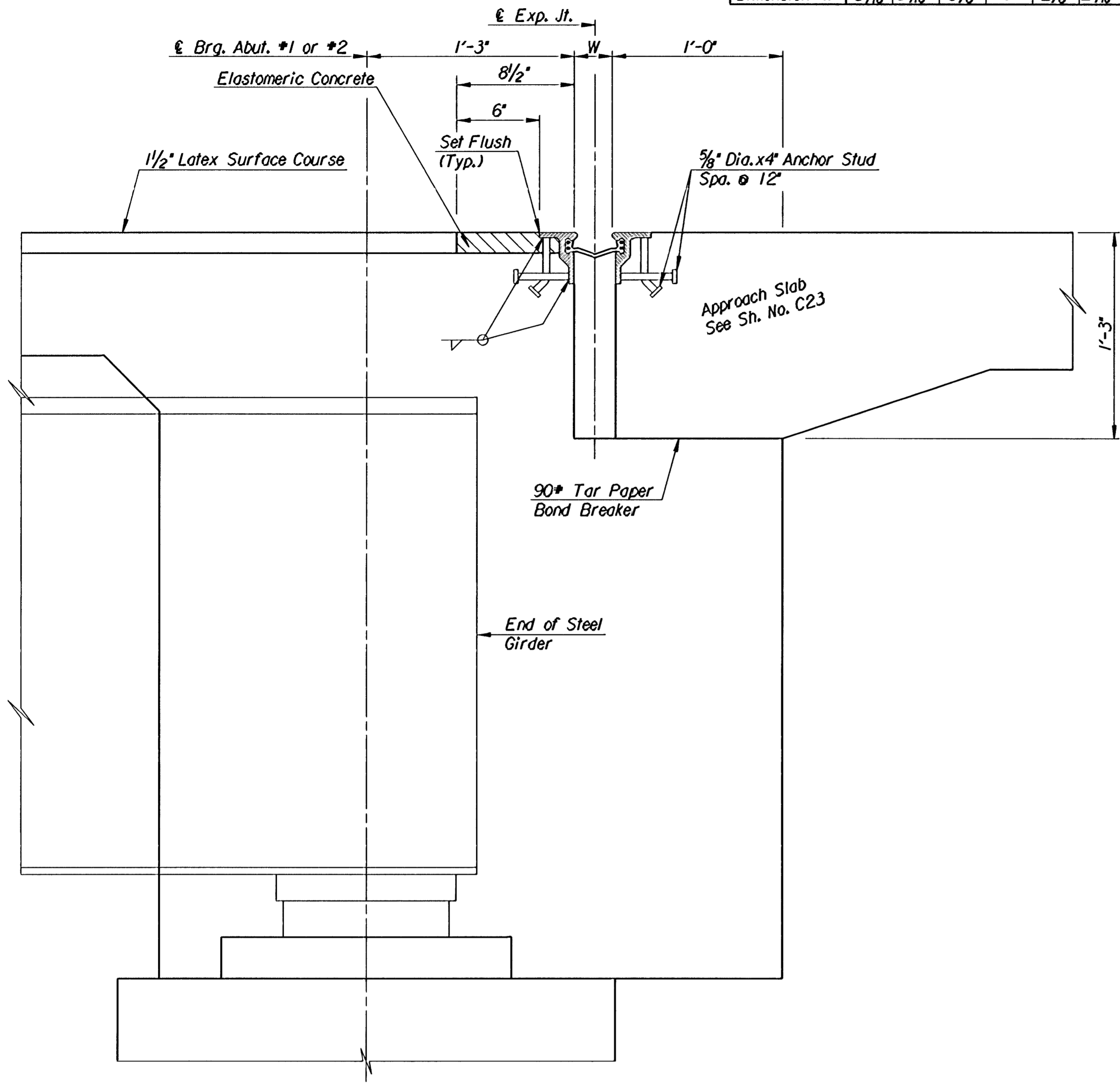
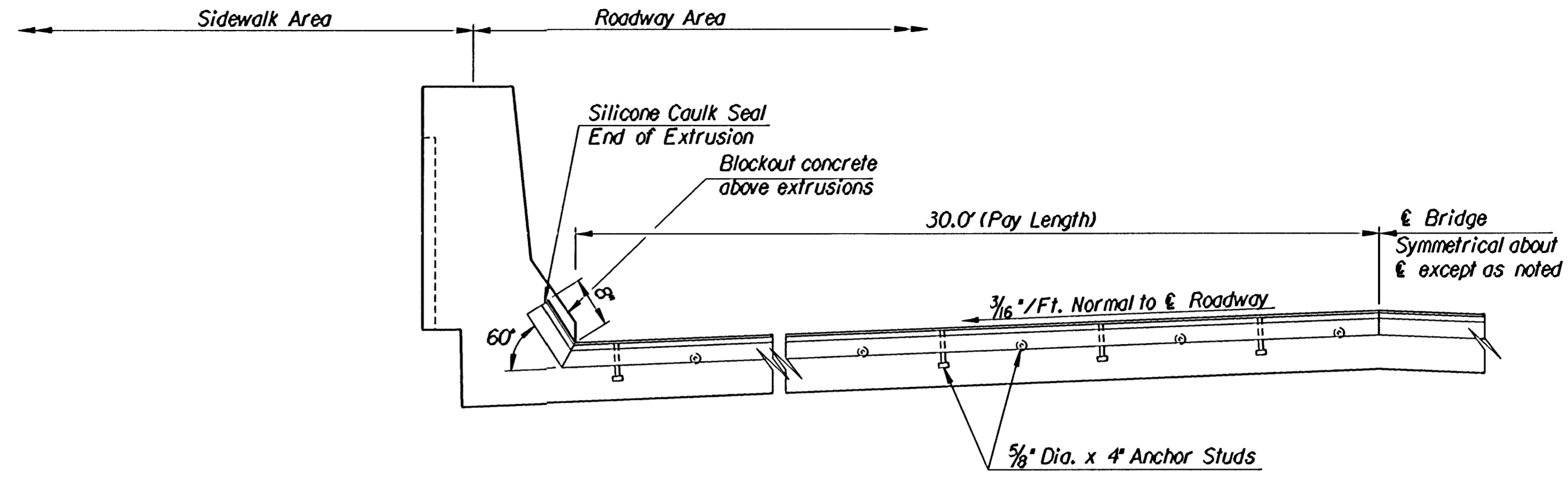


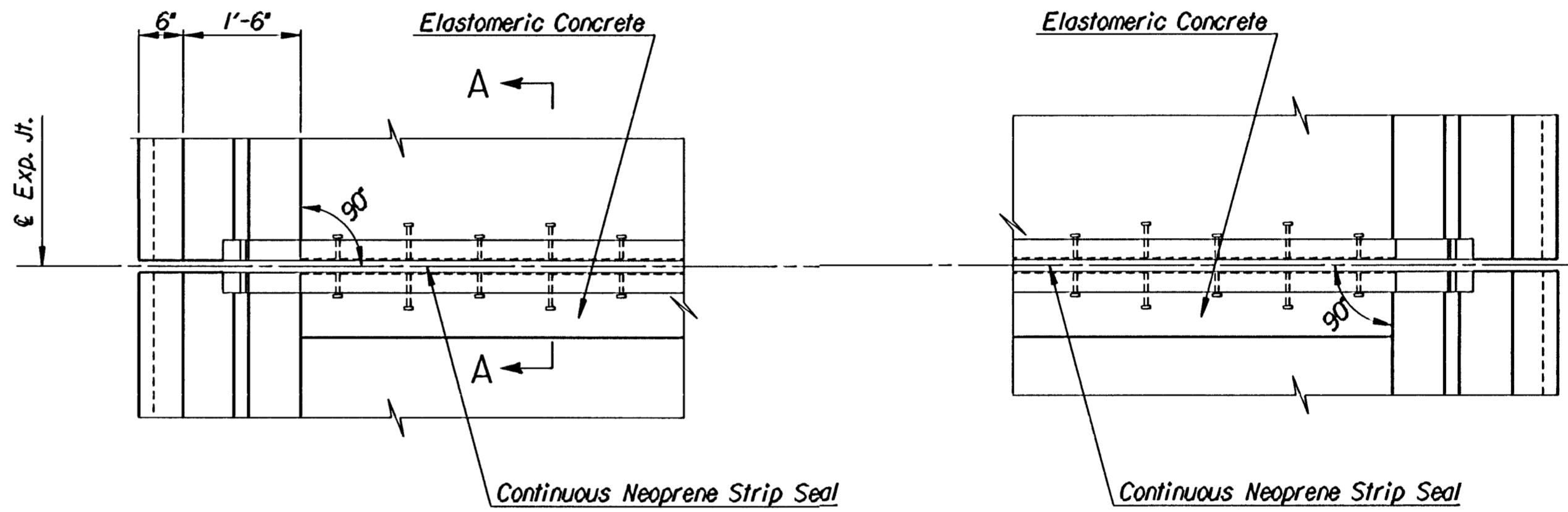
TABLE OF DIMENSIONS							
Temperature	30°	40°	50°	60°	70°	80°	90°
Dimension "W"	3 1/16"	3 5/16"	3 1/8"	3"	2 7/8"	2 11/16"	2 3/16"



SECTION A-A



PARTIAL ELEVATION
(Typical)



PARTIAL PLAN
ROADWAY
Abutment #2 Left or
Abutment #1 Right

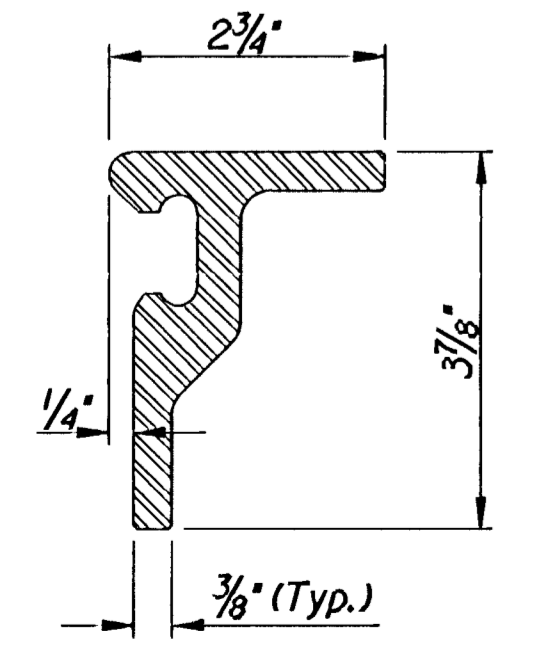
PARTIAL PLAN
ROADWAY
Abutment #2 Right or
Abutment #1 Left

STRIP SEAL ASSEMBLY: The Strip Seal Assembly shall conform to KDOT Specifications for "Strip Seal Assembly (Type II)" and shall accommodate a total movement of at least 4" inches. Structural Steel shall conform to ASTM A36 unless otherwise noted. Material for the wedge grips shall be solid extruded or hot rolled steel. No ASTM A588 steel or aluminum will be allowed. All surfaces except the inside surfaces of the grips shall be painted with an inorganic zinc primer with a water-borne acrylic finish coat. All Steel Plate Armoring material and installation shall be subsidiary to "Strip Seal Assembly".

ELASTOMERIC CONCRETE: The contractor shall use one of the following products or an approved equal:

- Delcrete: Manufactured by the D. S. Brown Company.
- Wabocrete: Manufactured by Watson Bowman Associates, Inc.
- Dynacrete: Manufactured by Dynamic Products, Ltd.

The elastomeric concrete shall be placed at locations shown on the plans and in the manner prescribed in the application procedures published by the manufacturer of the binder. The contractor shall arrange for a technical service representative of the binder manufacturer to be present on the project during the placement of the elastomeric concrete. The elastomeric concrete shall be subsidiary to the bid item "Strip Seal Assembly" and shall not be measured for payment.



STEEL EXTRUSION DETAIL

Note:
The nominal dimensions shown are suggested dimensions only. The Contractor may select alternate shapes for the Steel Extrusion. Details for Proposed alternate shapes shall be submitted to the Engineer for approval prior to fabrication.

Revisions		By	Date
1			

CITY OF WICHITA, KANSAS
 MICHAEL E. LINDEBAK, P.E.-CITY ENGINEER
 DOUGLAS AVENUE BRIDGE
 OVER ARKANSAS RIVER
EXPANSION JOINT DETAILS-ROADWAY
 CITY OF WICHITA PROJECT NO. 472-82721
PROFESSIONAL ENGINEERING CONSULTANTS, P.A.
 ENGINEERS
 WICHITA, KANSAS

Designed by	RWA	Checked by	RAS
Drawn by	WLL	Date	Sept. 1997
		Job No.	95088-4

File: I:\955\95088\douglas\expans.jt
 drawn by : ras/wll
 plotted by : wll 11-10-97