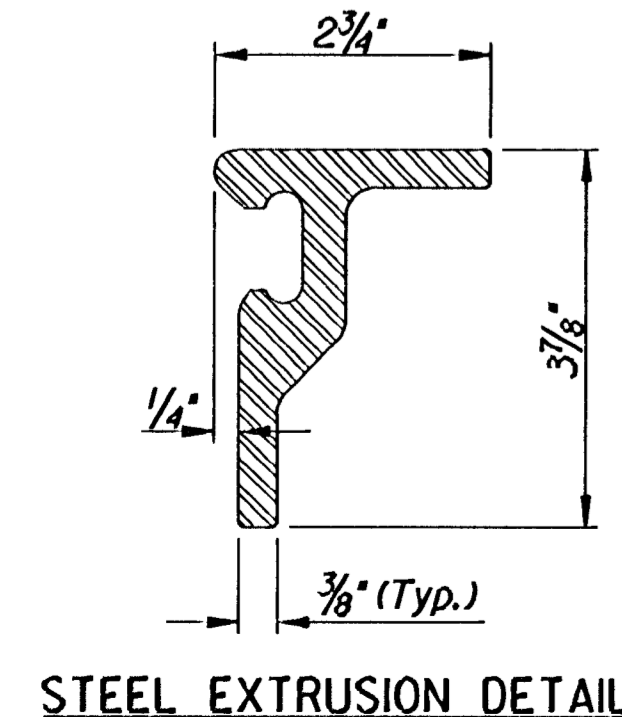
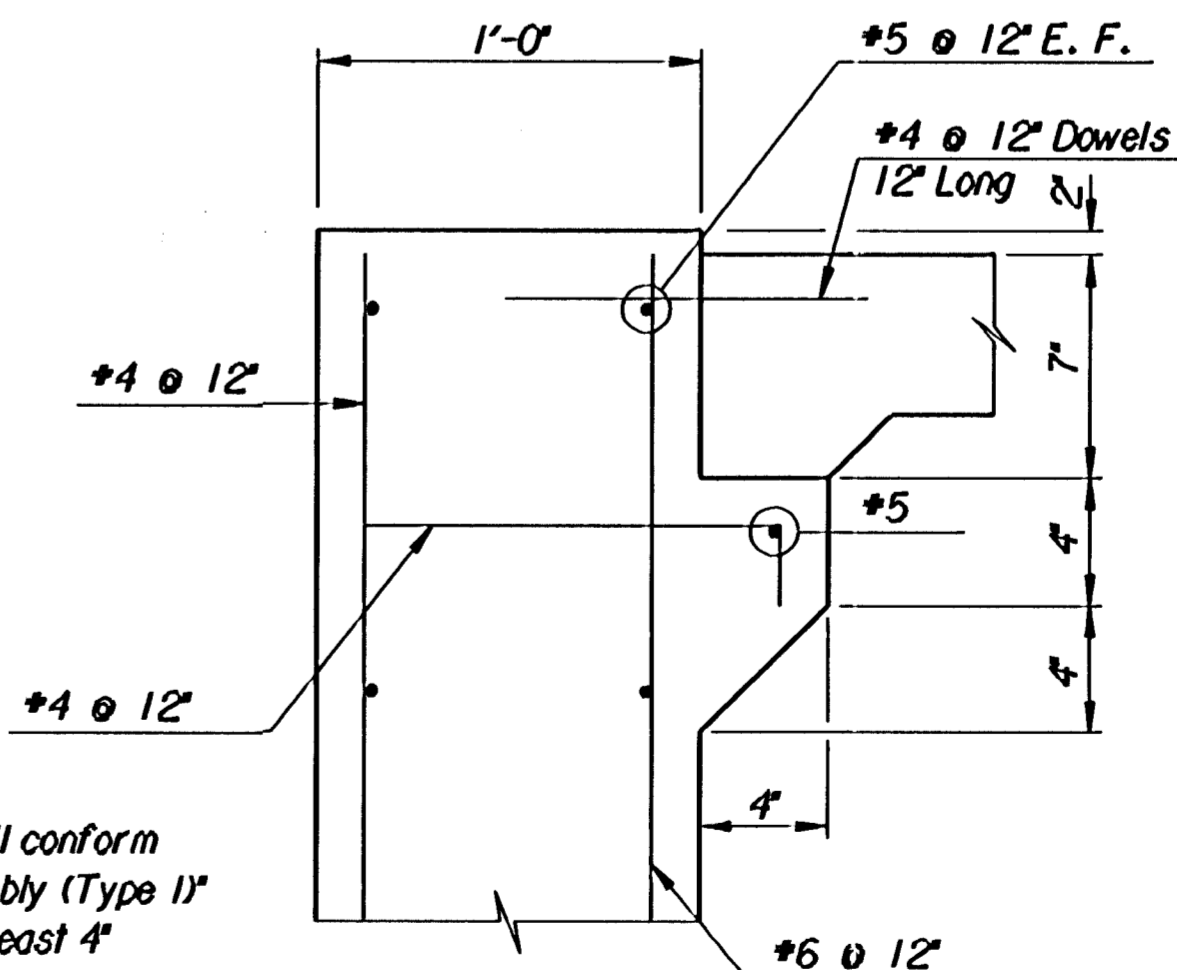
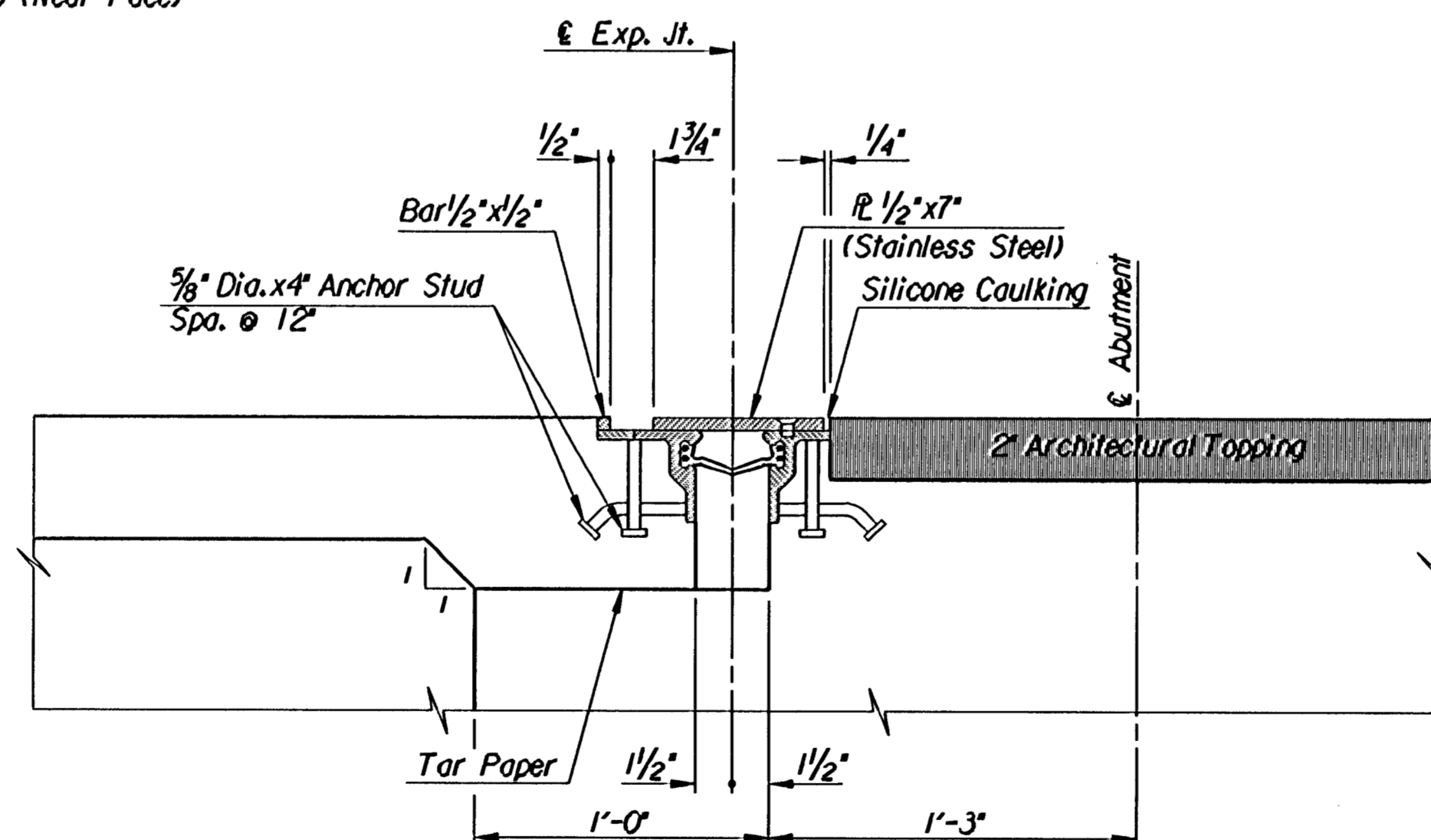
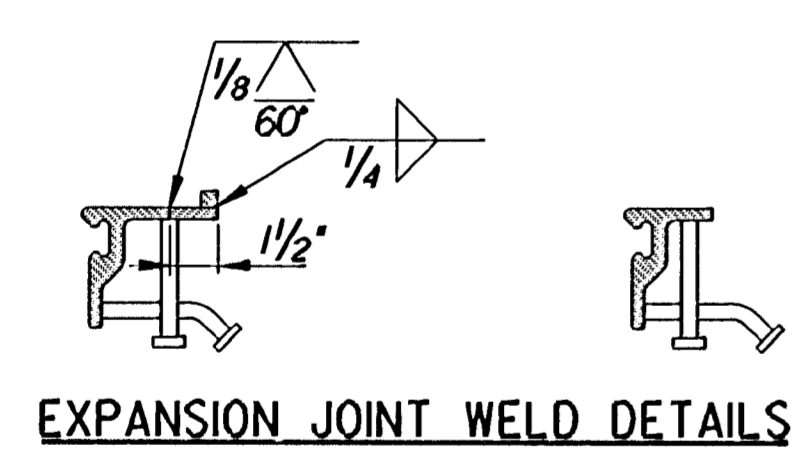
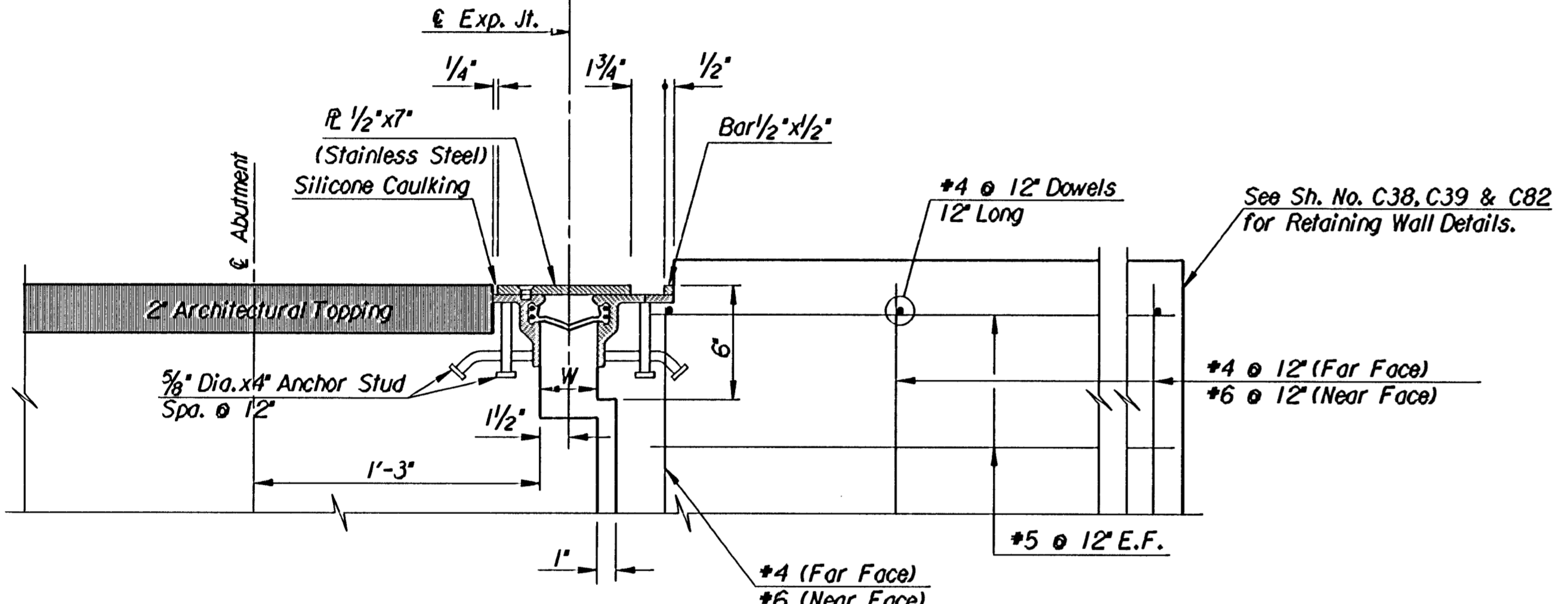
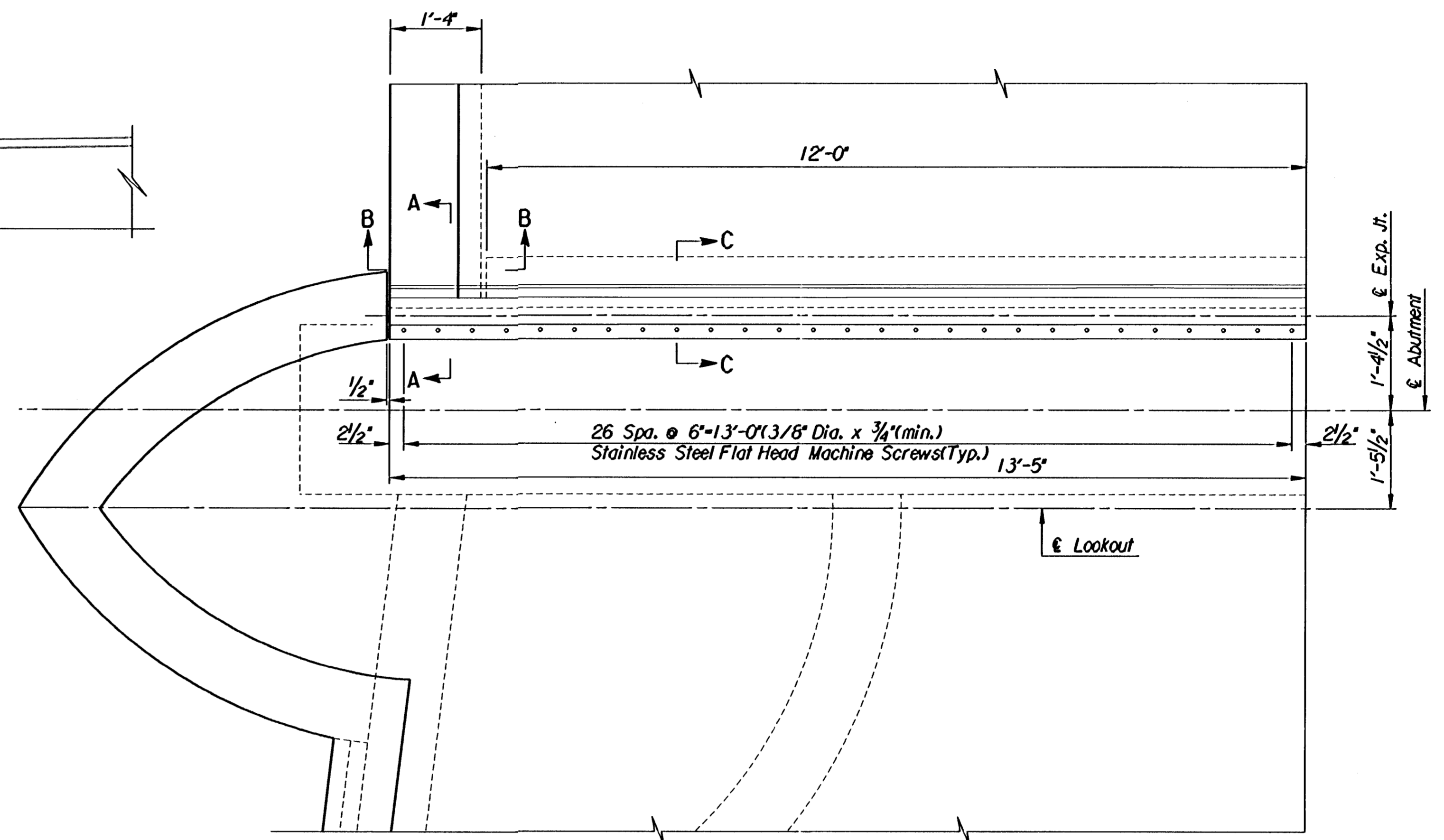
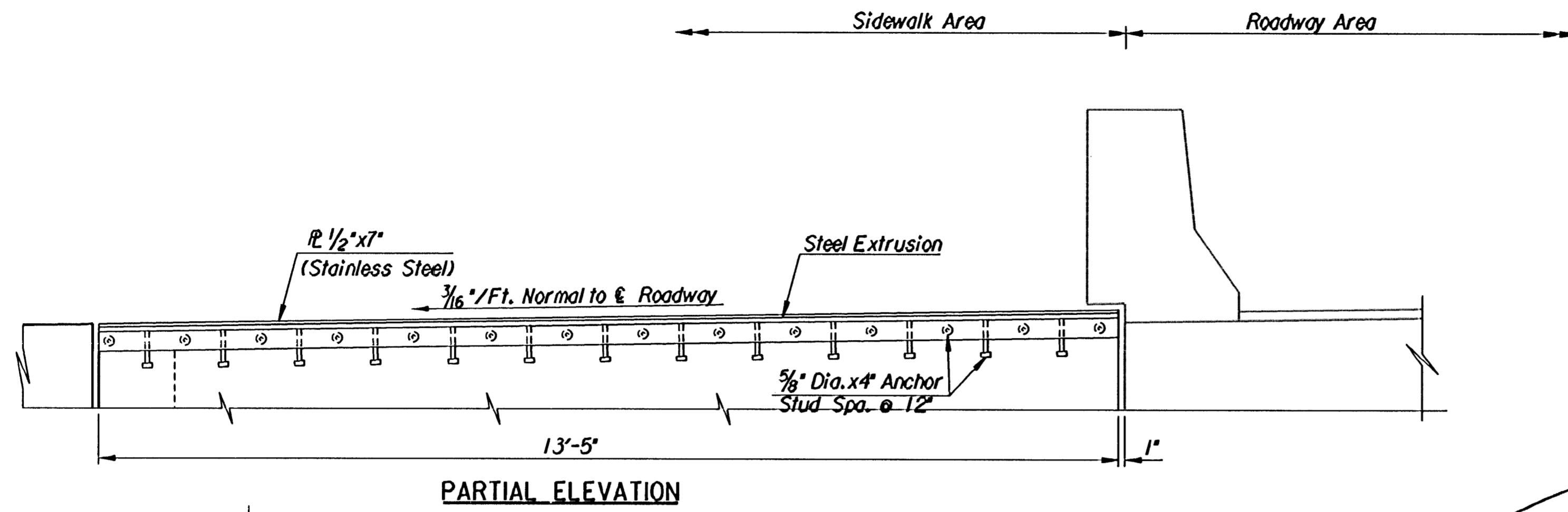


TABLE OF DIMENSIONS							
Temperature	30°	40°	50°	60°	70°	80°	90°
Dimension "W"	3 1/16"	3 3/16"	3 1/8"	3"	2 7/8"	2 1/2"	2 1/16"



Note:  
The nominal dimensions shown are suggested dimensions only. The Contractor may select alternate shapes for the Steel Extrusion. Details for Proposed alternate shapes shall be submitted to the Engineer for approval prior to fabrication.

**EXPANSION JOINT:** The Strip Seal Assembly shall conform to KDOT Specifications for "Strip Seal Assembly (Type 1)" and shall accommodate a total movement of at least 4 inches. Structural Steel shall conform to ASTM A36 unless otherwise noted. Stainless Steel plates and screws shall conform to ASTM A167 Type 304. Material for the wedge grips shall be solid extruded or hot rolled steel. No ASTM A588 steel or aluminum will be allowed. All surfaces except the inside surfaces of the grips and the stainless steel plate shall be painted with an inorganic zinc primer with a water-borne acrylic finish coat. All Steel Plate Armoring material and installation shall be subsidiary to "Expansion Joint".

1			
No.	Revisions	By	Date
CITY OF WICHITA, KANSAS MICHAEL E. LINDEBAK, P.E.-CITY ENGINEER DOUGLAS AVENUE BRIDGE OVER ARKANSAS RIVER <b>EXPANSION JOINT DETAILS-SIDEWALK</b> CITY OF WICHITA PROJECT NO. 472-82721 <b>PROFESSIONAL ENGINEERING CONSULTANTS, P.A.</b> ENGINEERS WICHITA, KANSAS			
Designed by	RAS	Checked by	RAS
Drawn by	WLL	Date	Sept. 1997 Job No. 95088-4

12/1995/95088/douglas/expans.jr.dgn  
 drawn by : ras/wll  
 plotted by : ras 1-14-98