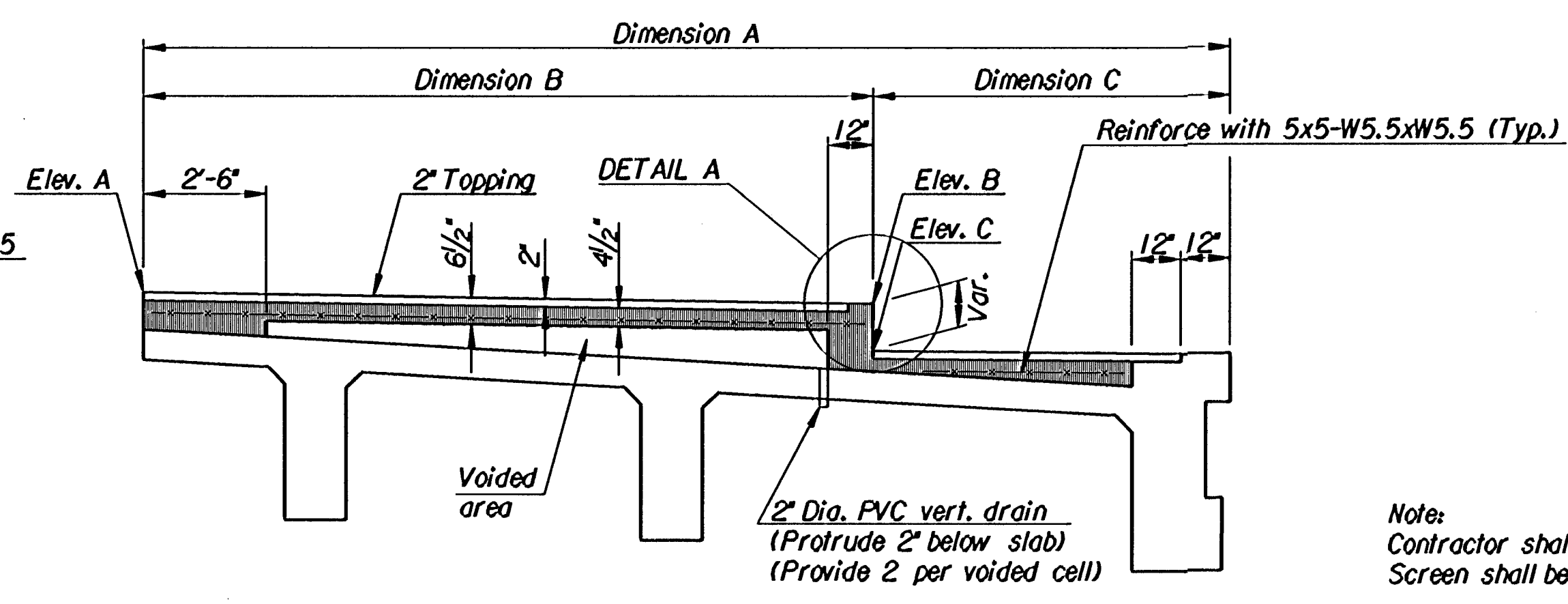
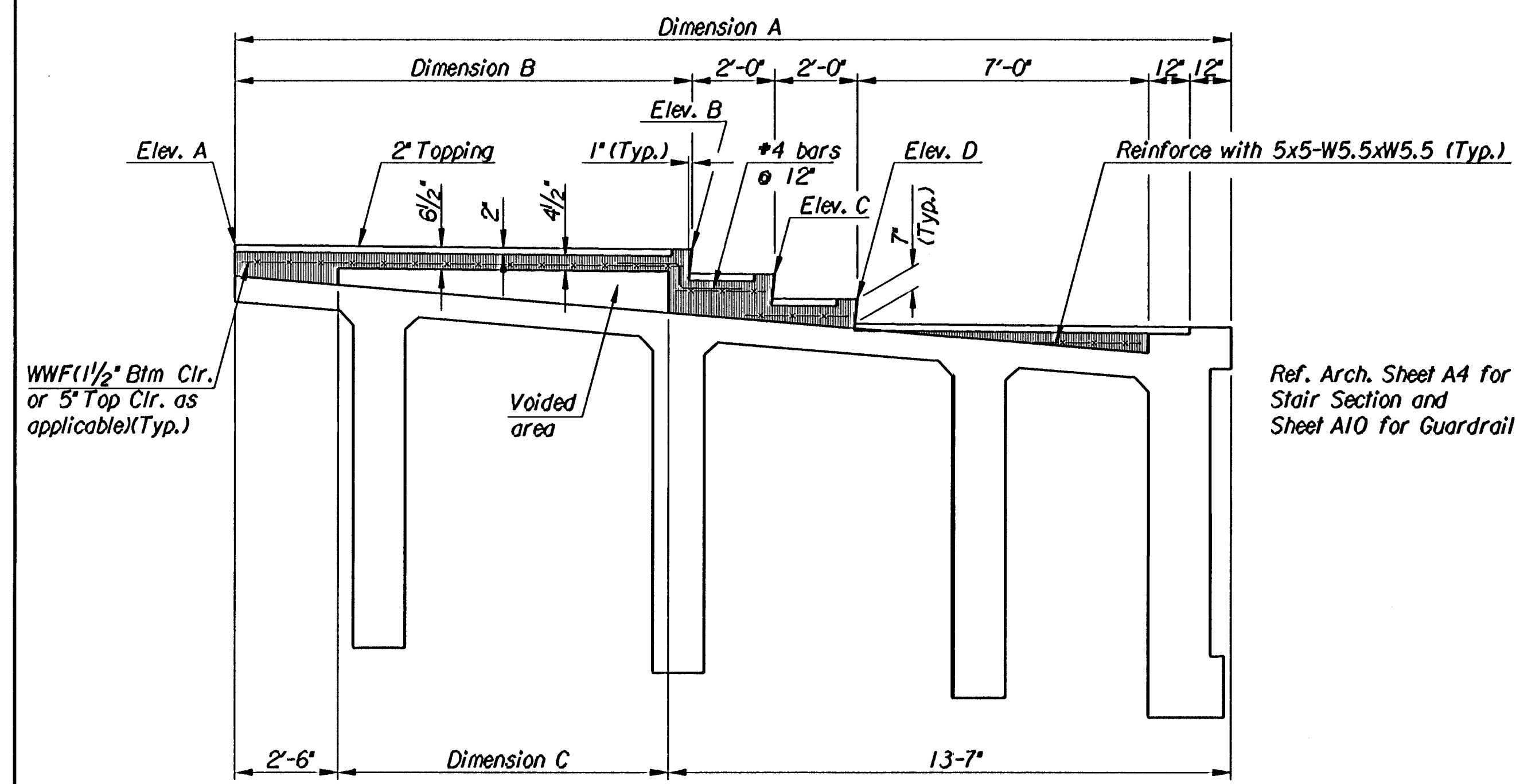


SECTION ALONG SPAN #3

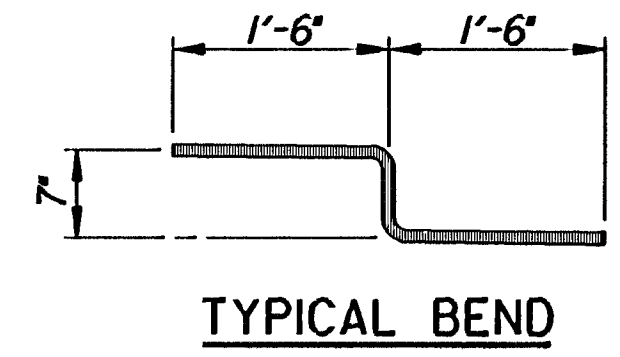


SECTION ALONG SPAN #2 OR #4

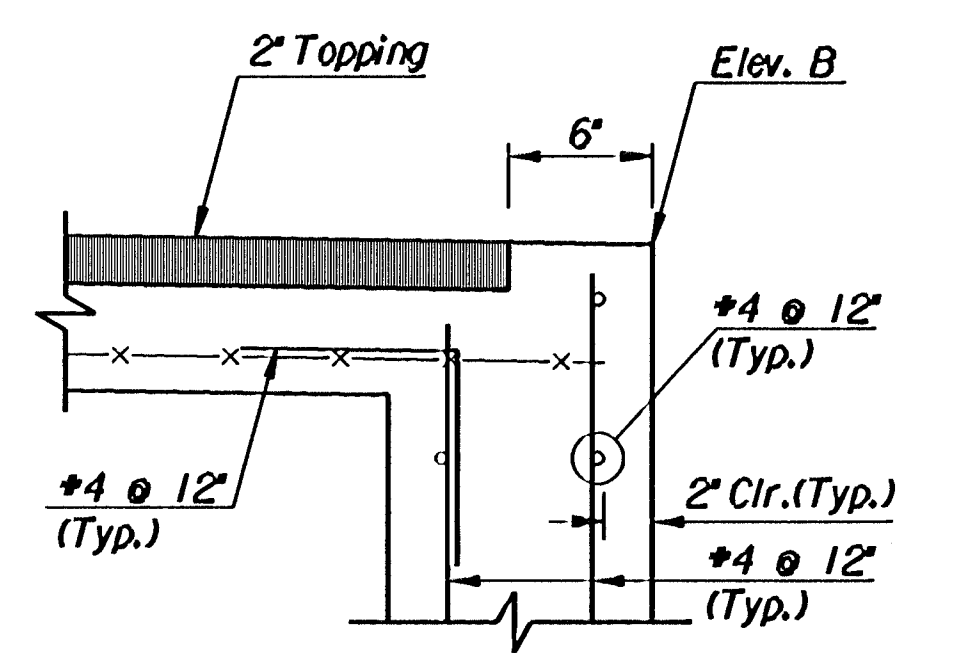
Note:  
Contractor shall provide bird screen with 1/2" mesh.  
Screen shall be subject to approval by Engineer.



SECTION NEAR PIER #2 OR #3



TYPICAL BEND



DETAIL A

Note:  
Similar Detail for Tower Recess Walls.  
(Provide #4 horizontal corner ties)

WNF(1/2" Btm Clr. or 5" Top Clr. as applicable)(Typ.)

Ref. Arch. Sheet A4 for Stair Section and Sheet A10 for Guardrail

TABLE OF DIMENSIONS AND ELEVATIONS							
Location	Dim. A	Dim. B	Dim. C	Elev. A	Elev. B	Elev. C	Elev. D
⊕ Pier #1	19'-3"	10'-9"	8'-6"	1305.18	1305.02	1305.02	---
2.10	19'-10 3/4"	11'-8 3/4"	8'-2"	1305.34	1305.15	1304.91	---
2.20	20'-6"	12'-7 1/2"	7'-10 3/8"	1305.48	1305.28	1304.85	---
2.30	21'-0 1/8"	13'-5 1/4"	7'-7 5/8"	1305.62	1305.41	1304.79	---
2.40	21'-7 7/8"	14'-2 1/4"	7'-5 1/8"	1305.74	1305.52	1304.73	---
2.50	22'-1 1/8"	14'-10 1/4"	7'-3 1/8"	1305.86	1305.63	1304.68	---
2.60	22'-7"	15'-5 3/8"	7'-1 1/8"	1305.97	1305.73	1304.62	---
2.70	23'-0"	15'-11 1/8"	7'-0 1/2"	1306.07	1305.82	1304.56	---
2.80	23'-4 1/8"	16'-4 1/8"	7'-0"	1306.16	1305.91	1304.51	---
2.90	23'-9 1/4"	16'-9 1/4"	7'-0"	1306.25	1305.98	1304.45	---
⊕ Pier #2	24'-1"	11'-1"	8'-0"	1306.32	1306.21	1305.61	1305.00
3.10	24'-6 1/8"	9'-6 1/8"	6'-6 1/8"	1306.43	1306.33	1305.71	1305.09
3.20	24'-11 1/4"	9'-11 1/4"	6'-11 1/4"	1306.51	1306.41	1305.79	1305.16
3.30	25'-2 1/2"	10'-2 1/2"	7'-2 1/2"	1306.57	1306.46	1305.84	1305.22
3.40	25'-4 7/8"	10'-4 7/8"	7'-4 7/8"	1306.60	1306.49	1305.87	1305.25
3.50	25'-5"	10'-5"	7'-5"	1306.60	1306.50	1305.87	1305.25
3.60	25'-4 3/8"	10'-4 3/8"	7'-4 3/8"	1306.58	1306.47	1305.85	1305.23
3.70	25'-2 1/2"	10'-2 1/2"	7'-2 1/2"	1306.53	1306.43	1305.80	1305.18
3.80	24'-11 1/4"	9'-11 1/4"	6'-11 1/4"	1306.45	1306.35	1305.73	1305.11
3.90	24'-6 1/8"	9'-6 1/8"	6'-6 1/8"	1306.35	1306.26	1305.63	1305.01
⊕ Pier #3	24'-1"	11'-1"	8'-0"	1306.22	1306.11	1305.51	1304.91
4.10	23'-9 1/4"	16'-9 1/4"	7'-0"	1306.14	1305.88	1304.34	---
4.20	23'-4 1/8"	16'-4 1/8"	7'-0"	1306.04	1305.79	1304.39	---
4.30	23'-0"	15'-11 1/8"	7'-0 1/2"	1305.94	1305.69	1304.43	---
4.40	22'-7"	15'-5 3/8"	7'-1 1/8"	1305.83	1305.59	1304.48	---
4.50	22'-1 1/8"	14'-10 1/4"	7'-3 1/8"	1305.71	1305.48	1304.53	---
4.60	21'-7 7/8"	14'-2 1/4"	7'-5 1/8"	1305.58	1305.36	1304.57	---
4.70	21'-0 1/8"	13'-5 1/4"	7'-7 5/8"	1305.44	1305.23	1304.62	---
4.80	20'-6"	12'-7 1/2"	7'-10 3/8"	1305.30	1305.10	1304.67	---
4.90	19'-10 3/4"	11'-8 3/4"	8'-2"	1305.14	1304.96	1304.71	---
⊕ Pier #4	19'-3"	10'-9"	8'-6"	1304.98	1304.81	1304.81	---

Note:  
The cast-in-place seating area may be provided as a pre-cast option with the following requirements:  
1. Submittal of shop drawings to the Engineer for approval.  
2. No increase in weight on sub-deck.  
3. Placement methods and sequence must be outlined.  
4. Consideration for positive anchorage and seating method.  
5. Sections must be compatible with 2" Topping Joints.

1	Revisions	By	Date
No.			
CITY OF WICHITA, KANSAS MICHAEL E. LINDEBAK, P.E.-CITY ENGINEER DOUGLAS AVENUE BRIDGE OVER ARKANSAS RIVER <b>SIDEWALK SURFACE DETAILS</b> CITY OF WICHITA PROJECT NO. 472-8272I <b>PROFESSIONAL ENGINEERING CONSULTANTS, P.A.</b> ENGINEERS WICHITA, KANSAS			
Designed by	P.D.F.	Checked by	R.A.S.
Drawn by	W.L.L.	Date	Sept. 1997 Job No. 95088-4